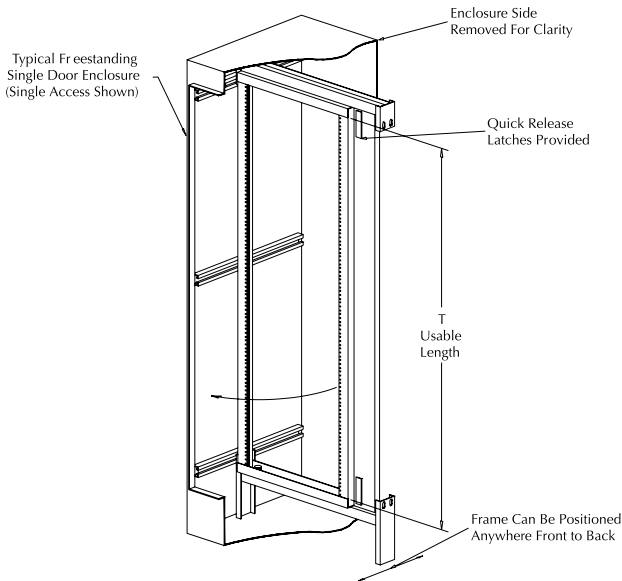


Enclosure Accessories - Rack Mounting

Swing-Out Rack Mounting Frames For Freestanding Enclosures



Fabricated from 10-gauge steel, these swing-out rack mounting frames are available for mounting 19-inch rack-mounted equipment. Mounting holes are tapped with #10-32 threads spaced per E.I.A. standard.

Frames are painted with white polyester powder.

Note: If used in a two-door enclosure, a center panel support must be ordered.

Mounting Frames	Price	Fits Enclosure HxW	Usable Angle Length "T"	Wt. [lb]
WA7230SOF19	\$444.00	72x30 [1829x762]	57.88 [1470]	61
WA7236SOF19	\$479.00	72x36 [1829x914]	57.88 [1470]	73
WA9036SOF19	\$505.00	90x36 [2286x914]	75.38 [1915]	87

Note: Dimensions in inches [millimeters]

Rack Mounting Angles for Ultimate Series

Rack mounting angles allow the installation of 19-inch rack equipment in 24-inch wide NEMA 412 enclosures. "L" shaped thru-hole angles may be fixed to the enclosure flange, or used in combination with the Adjustable Depth Mounting Kits. Thru-hole diameters are 0.281in. Brackets are fabricated from 14 ga. galvanized steel. Mounting hardware and two angles are provided.

Note: W1032N clip nuts must be purchased separately.



HFWRA20C

Rack Mounting Angles	Price	For Enclosure Height in [mm]	Wt. [lb]
HFWRA20C	\$73.00	20 [508]	3
HFWRA24C	\$77.00	24 [609]	
HFWRA30C	\$93.00	30 [762]	4
HFWRA36C	\$103.00	36 [914]	
HFWRA48C	\$122.00	48 [1219]	7

Console Rack Angles

Angle brackets for mounting 19-inch rack equipment in the WC14B console.



WC14R

Console Rack Angle	Price	Description	Wt. [lb]
WC14R	\$168.00	Hubbell-Wiegmann enclosure rack angle, white polyester powder finish, for WC14B enclosure. For use on WC series consoles but provides standard rack hole spacing for only WC14B. Includes mounting hardware. Package of 2.	11

Rack Mounting Angle For Wall Mounts

Designed for mounting 19-inch rack mounted equipment in 24-inch wide NEMA 12, NEMA 4 and NEMA 412 wall mount enclosures. Small holes are tapped # 10-32. Sealing washers are also provided to maintain original NEMA rating after installation.

Rack Mounting Angle	Price	For Enclosure Height in [mm]	Description	Wt. [lb]
WARAK24	\$79.00	24 [609]	Enclosure rack mounting angle, white polyester powder finish. Includes mounting hardware. Package of 2.	8
WARAK30	\$99.00	30 [762]		10
WARAK36	\$119.00	36 [914]		12

Enclosure Shipping Schedule
1 -10 days
<small>Color indicates shipping lead time in business days.</small>

See our website: www.AutomationDirect.com for complete engineering drawings.

Enclosure Accessories - Rack Mounting

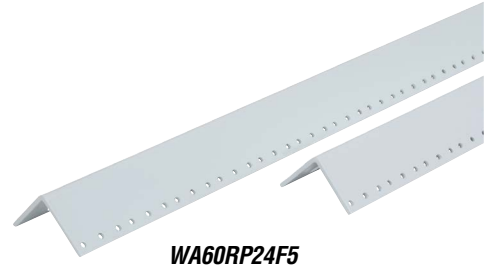
Rack Mounting For Freestanding Enclosures



Type RP Angles

Full or half-length rack angles for installing rack-mounted equipment in freestanding NEMA 12 enclosures

- 10-gauge steel
- If used in two-door enclosures a center panel support must be ordered
- White polyester powder
- Package of 2 angles includes mounting hardware



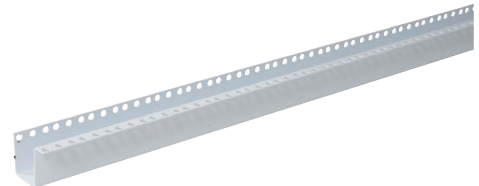
WA60RP24F5

Rack Mounting Angles	Price	Fits Enclosure Size (HxW) in [mm]	Length "L" in [mm]	Weight [lb]
WA60RP24F5	\$132.00	60x24 [1524x610]	49.00 [1244]	15
WA60RP24F6	\$77.00		26.25 [667]	8
WA72RP24F5	\$153.00	90x24 [2286x610]	61.25 [1556]	19
WA72RP24F6	\$97.00		31.50 [800]	10
WA90RP24F5	\$205.00	90x24 [228.60x60.96cm]	78.75 [2000]	24
WA90RP24F6	\$116.00		40.25 [1022]	14

Type RA Channel

U-shaped channel for installing 19-inch rack-mounted equipment in all freestanding NEMA 12 and NEMA 4 enclosures:

- Through holes (7/32-inch diameter) are provided and require a W1032N clip nut (must be ordered separately)
- Mounted on unistrut within the enclosure
- Adjustable
- If used in two-door enclosures, a center panel support must be ordered
- White polyester powder finish



WA60RA19TH

Rack Mounting Channel	Price	Fits Enclosure Size (HxW) in [mm]	Length in [mm]	Width [lb]
WA60RA19TH	\$134.00	60x24 [1524x610]	49.00 [1245]	14
WA72RA19TH	\$142.00	72x24 [1829x610]	61.25 [1556]	18
WA90RA19TH	\$154.00	90x24 [2286x610]	78.78 [2001]	23

Enclosure Shipping Schedule
1 -10 days
<small>Color indicates shipping lead time in business days.</small>

See our website: www.AutomationDirect.com for complete engineering drawings.