



# PxW2 Series Metal Face Inductive Proximity Sensors



## 316L Stainless Steel – DC

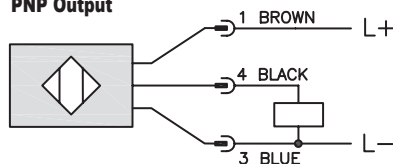
- 8 models available
- 8mm, 12mm, 18mm, 30mm
- Complete overload protection
- IP65, IP66, IP67, IP68, IP69K rated
- Lock nuts included
- 316L Stainless Steel body
- Metal sensing face provides durable protection
- LED Status indicator
- Lifetime warranty



ProSense PxW2 Series Metal Face Inductive Prox Selection Chart								
Part Number	Price	Sensing Range	Mounting	Output State	Logic	Connection	Wiring	Dimensions
<b>M8 Proximity Sensors</b>								
<a href="#">PEW2-AP-3F</a>	\$32.00	3mm [0.118 in]	Semi-flush	N.O.	PNP	3-pin M8 quick-disconnect	Diagram 1	<a href="#">PDF</a>
<a href="#">PEW2-AP-4F</a>	\$32.00	5mm [0.20 in]	Non-flush	N.O.	PNP	3-pin M8 quick-disconnect	Diagram 1	<a href="#">PDF</a>
<b>M12 Proximity Sensors</b>								
<a href="#">PMW2-AP-3H</a>	\$32.00	4mm [0.157 in]	Flush	N.O.	PNP	4-pin M12 quick-disconnect	Diagram 1	<a href="#">PDF</a>
<a href="#">PMW2-AP-4H</a>	\$32.00	6mm [0.236 in]	Non-flush	N.O.	PNP	4-pin M12 quick-disconnect	Diagram 1	<a href="#">PDF</a>
<b>M18 Proximity Sensors</b>								
<a href="#">PKW2-AP-3H</a>	\$34.00	8mm [0.31 in]	Flush	N.O.	PNP	4-pin M12 quick-disconnect	Diagram 1	<a href="#">PDF</a>
<a href="#">PKW2-AP-4H</a>	\$34.00	12mm [0.47 in]	Non-Flush	N.O.	PNP	4-pin M12 quick-disconnect	Diagram 1	<a href="#">PDF</a>
<b>M30 Proximity Sensors</b>								
<a href="#">PTW2-AP-3H</a>	\$43.00	15mm [0.59 in]	Flush	N.O.	PNP	4-pin M12 quick-disconnect	Diagram 1	<a href="#">PDF</a>
<a href="#">PTW2-AP-4H</a>	\$43.00	25mm [0.98 in]	Non-flush	N.O.	PNP	4-pin M12 quick-disconnect	Diagram 1	<a href="#">PDF</a>

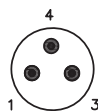
## Wiring diagrams

Diagram 1  
PNP Output

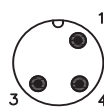


### Connectors

M8 connector



M12 connector

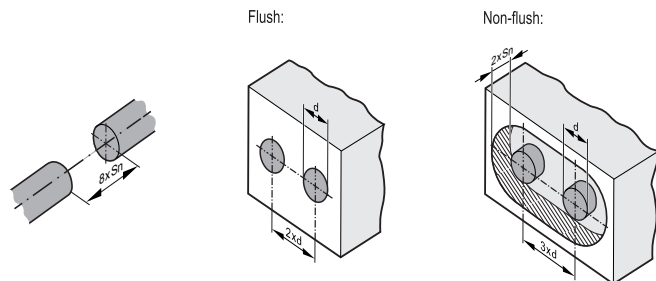


**Warning:** These products are not safety sensors and are not suitable for use in personal safety applications.

# PxW2 Series Metal Face Inductive Prox Specifications

ProSense PxW2 Series Metal Face Inductive Prox Specifications								
Sensor	PEW2-AP-3F	PEW2-AP-4F	PMW2-AP-3H	PMW2-AP-4H	PKW2-AP-3H	PKW2-AP-4H	PTW2-AP-3H	PTW2-AP-4H
Mounting Type	Semi-flush	Non-flush	Flush	Non-flush	Flush	Non-flush	Flush	Non-flush
Sensing Range	3mm	5mm	4mm	6mm	8mm	12mm	15mm	25mm
Real Sensing Range (Sr)	3 ± 10%	5 ± 10%	4 ± 10%	6 ± 10%	8 ± 10%	12 ± 10%	15 ± 10%	25 ± 10%
Material Correction Factors	See Material Influence Table							
Output Type	PNP N.O.							
Operating Voltage	10-30 VDC							
No-load Supply Current	≤ 20 mA							
Operating (Load) Current	≤ 100 mA							
Off-state (Leakage) Current	≤ 0.1 mA							
Voltage Drop	2.5 V							
Switching Frequency	250Hz	500Hz	100Hz	250Hz	100Hz	250Hz	50Hz	100Hz
Hysteresis (% of Sr)	3 to 15							
Switch-point Drift (% of Sr)	-10 to 10							
Pressure Rating (bar)	50 (725.19 psi)			100 (1450 psi)				
Protection Class	III							
Reverse Polarity Protection	Yes							
Short-Circuit Protection	Yes							
Operating Temperature (UL)	-25 to +85°C [-13 to +185°F]		-25 to +70°C [-13 to 158°F]	0 to +70°C [35 to 158°F]	-25 to +70°C [-13 to 158°F]	0 to +70°C [35 to 158°F]	-25 to +70°C [-13 to 158°F]	0 to +70°C [35 to 158°F]
Protection Degree (DIN 40050)	IP65, IP66, IP67, IP68, IP69K (With IP69K Cable)							
Indication/Switch Status	Yellow LED, Switching Status, 4 x 90°							
Housing Material	316L Stainless Steel							
Sensing Face Material	316L Stainless Steel							
Shock/Vibration	Shock EN 60068-2-27, Vibration EN 60068-2-6							
Tightening Torque	5 N•m		15 N•m		50 N•m		80 N•m	
Weight	15.8 g (0.56 oz)	15.3 g (0.54 oz)	25.8 g (0.91 oz)	23.9 g (0.84 oz)	44g (1.55 oz)	38.6 g (1.36 oz)	115g (4.05 oz)	106.8 g (3.77 oz)
Connection	3-pin M8 quick-disconnect			4-pin M12 quick-disconnect				
IO-Link	NA							
Agency Approvals	CE, cULus E328811							

Note: To obtain the most current agency approval information, see the Agency Approval Checklist section on the specific part number's web page.



Minimum clearance for installing units of the same type (side-by-side installation). Applies to cylindrical and rectangular sensors. The minimum distance between units may only be disregarded for units with different oscillator frequencies or different sensing principles.

**Warning: These products are not safety sensors and are not suitable for use in personal safety applications.**

# Accessories for 30mm Sensors

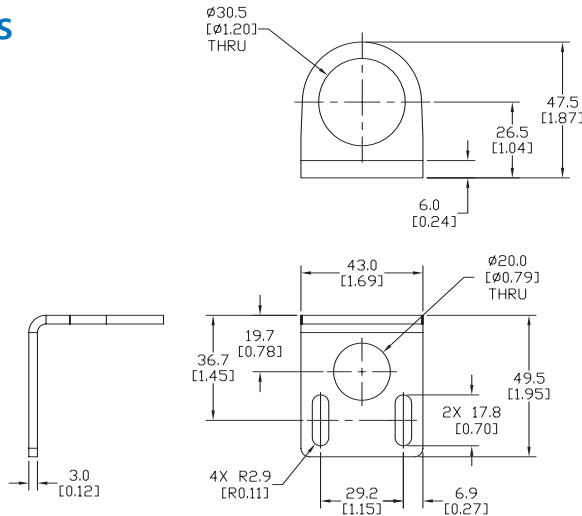
## Right-angle Mounting Bracket

Mounting bracket, right-angle, 304 stainless steel. For use with 30mm sensors.

Accessories for FW Series Sensors			
Part Number	Price	Description	Weight lb [g]
<b>ST30C6W</b>	\$3.50	AutomationDirect mounting bracket, right-angle, 304 stainless steel. For use with 30mm sensors.	0.15 (68.0)

### Dimensions

mm [inches]



ST30C6W

## Right-angle Swivel Mounting Systems

Mounting bracket, right-angle swivel, 360 degree vertical and horizontal adjustment, 12mm rod mount. For use with 30mm sensors. Available in all 304 stainless steel or with an aluminum head with a 304 stainless steel mounting plate.

Accessories for 30mm Sensors						
Part Number	Price	Description	Mounting Head	Mounting Plate	Drawing Link	Weight lb [g]
<b>OPT2118</b>	\$10.50	Wenglor mounting bracket, right-angle swivel, 360 degree vertical and horizontal adjustment, aluminum, 12mm rod mount. For use with 30mm sensors.	Aluminum	304 Stainless steel	<a href="#">PDF</a>	0.18 (81.7)
<b>OPT2119</b>	\$18.50	Wenglor mounting bracket, right-angle swivel, 360 degree vertical and horizontal adjustment, 304 stainless steel, 12mm rod mount. For use with 30mm sensors.	304 Stainless Steel	304 Stainless steel	<a href="#">PDF</a>	0.18 (81.7)

Note: 304 Stainless steel mounting rods sold separately: OPT2109 (200mm [7.87 in] length), OPT2110 (300mm [11.81 in] length), and OPT2111 (500mm [19.69 in] length).



OPT2118, OPT2119