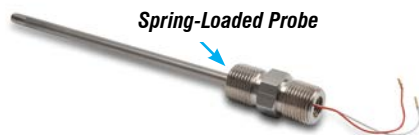


prosense® Thermocouple Spring-Loaded Probes with Hex Nipple

THMJ & K - HXXL01-02

Overview



CHSC-AL-1



CHTB-2

Accessories

- Spring-loaded for positive tip contact in thermowells
- Type J or K thermocouple elements to meet many temperature sensing applications
- 1/4" diameter, 316 SS sheath to protect against harsh environments
- Magnesium Oxide (MgO) insulation provides vibration dampening and protection against thermal shock
- 4" , 6" or 12" probe length
- 316 SS, 1/2 x 1/2 NPT hex nipple allows easy replacement of existing probes and connection to a wiring junction box
- Made in the USA

Thermocouple Spring-Loaded Probes with Hex Nipple - Types J and K

Thermocouple Spring-Loaded Probes with Hex Nipple - Types J and K								
Part Number	Pcs/Pkg	Wt (lb)	Price	Type	Probe Diameter (O.D.)	Probe Length	Temperature Sensing Range	Mounting
<u>THMJ-H04L01-02</u>	1	0.5	\$55.00	J	1/4"	4"	0 to 720°C (32 to 1330°F)	Integral 1/2" x 1/2" NPT Hex Nipple, 316 SS
<u>THMJ-H06L01-02</u>			\$60.00	J		6"		
<u>THMJ-H12L01-02</u>			\$63.00	J		12"		
<u>THMK-H04L01-02</u>			\$55.00	K		4"	0 to 927°C (32 to 1700°F)	
<u>THMK-H06L01-02</u>			\$60.00	K		6"		
<u>THMK-H12L01-02</u>			\$63.00	K		12"		

Technical Specifications

Junction Type	Ungrounded
ASTM E230 Standard Limits of Error	±2.2°C (±4.0°F) or 0.75%, whichever is greater
Probe	ø1/4", 316 stainless steel sheath, single thermocouple element is embedded in MgO powder
Response Time	2.9 seconds, 63.2% of a 25-77°C step change per method ASTM E839
Wiring	3 inch stranded 24 AWG wire leads with terminal pins, Teflon insulation

Note: See end of section for thermowells to fit these units.



Note: Check the chemical compatibility of the sensor's wetted parts with the medium to be measured.

proSense® Thermocouple Spring-Loaded Probes with Hex Nipple

Dimensions

inches [mm]

THMJ & K - HXXL01-02

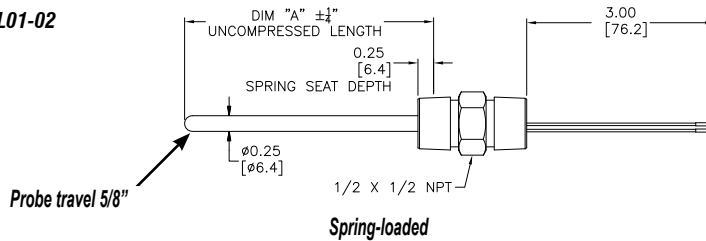


TABLE A

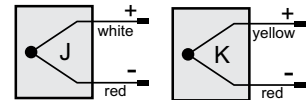
PART NUMBER	DIM "A"
THMJ-H04L01-02	4.00[101.6]
THMJ-H06L01-02	6.00[152.4]
THMJ-H12L01-02	12.00[304.8]
THMK-H04L01-02	4.00[101.6]
THMK-H06L01-02	6.00[152.4]
THMK-H12L01-02	12.00[304.8]

Wiring Information

Type J: (+) white (-) red

Type K: (+) yellow (-) red

- Must use thermocouple extension lead wire
- Observe polarity when making connections
- Do not use standard wire nuts



Accessories

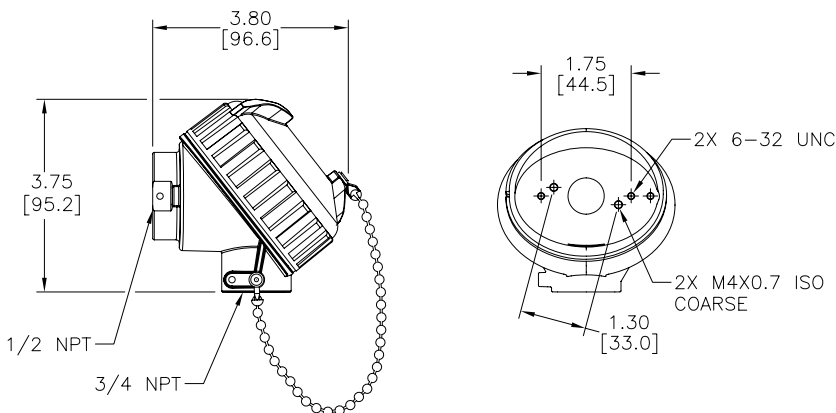
Part No.	Description	Pcs/Pkg	Price
CHSC-AL-1	ProSense general purpose screw cover connection head for temperature probes, die-cast aluminum, 1/2 inch NPT process opening, 3/4 inch NPT conduit opening, NEMA 4X, IP66 rated, graphite gasket, maximum temperature rating of 825°F (440°C). Order probe and terminal base separately.	1	\$24.50
CHTB-2	ProSense ceramic terminal base, two brass terminals with stainless steel screws, for use with ProSense temperature probe connection heads, two mounting screws included.	1	\$6.50

Note: Full listing of accessories at the end of this section. Thermocouple extension lead wire available at www.automationdirect.com.

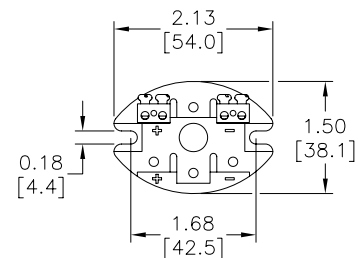
Dimensions

inches [mm]

CHSC-AL-1



CHTB-2



prosense® Thermocouple, RTD, and Thermistor Connectors

Overview

- Glass-filled high quality thermoplastic body with original thermocouple material pins and spring-loaded inserts
- Polarized pins
- Molded barriers prevent short circuit
- Captive central cover screw for easy assembly
- Easy wire connection pressure plate
- construction
- Stainless steel screws with combination head (Slotted and Phillips)
- 3-pin standard connectors have a third pin for ground or continuous shield, or for 3-wire RTDs

Thermocouple, RTD, and Thermistor Connectors									
Part Number	Pcs/ Pkg	Wt(lb)	Price	Sensor Type	Connector Type	Temperature Rating	Body Color	Wire Size	Wire Cable Clamp Bracket
<u>THMJ-SP</u>	1	0.5	\$4.50	J	Standard round pin plug	Max continuous 400°F (200°C)	Black	32 AWG (0.2 mm) to 14 AWG maximum (2.0 mm)	WCB-S
<u>THMJ-SJ</u>	1	0.5	\$5.75		Standard round pin jack				—
<u>THMJ-SPJ</u>	1	0.5	\$11.00		Standard round direct mount jack				—
<u>THMJ-MP</u>	1	0.5	\$3.75		Miniature flat pin plug			40 AWG (0.08 mm) to 20 AWG maximum (0.8 mm)	WCB-M
<u>THMJ-MJ</u>	1	0.5	\$4.25		Miniature flat pin jack				—
<u>THMJ-MPJ</u>	1	0.5	\$8.25		Miniature round direct mount jack				—
<u>THMK-SP</u>	1	0.5	\$4.50	K	Standard round pin plug		Yellow	32 AWG (0.2 mm) to 14 AWG maximum (2.0 mm)	WCB-S
<u>THMK-SJ</u>	1	0.5	\$5.50		Standard round pin jack				—
<u>THMK-SPJ</u>	1	0.5	\$10.50		Standard round direct mount jack				—
<u>THMK-MP</u>	1	0.5	\$4.00		Miniature flat pin plug			40 AWG (0.08 mm) to 20 AWG maximum (0.8 mm)	WCB-M
<u>THMK-MJ</u>	1	0.5	\$4.25		Miniature flat pin jack				—
<u>THMK-MPJ</u>	1	0.5	\$9.00		Miniature round direct mount jack				—
<u>THMK-HSP</u>	1	0.5	\$14.00		Standard hi-temp round pin plug	Max continuous 662°F (350°C)	Brown	32 AWG (0.2 mm) to 14 AWG maximum (2.0 mm)	WCB-S
<u>THMK-HSJ</u>	1	0.5	\$16.50		Standard hi-temp round pin jack				
<u>THMT-SP</u>	1	0.5	\$4.75	T	Standard round pin plug	Max continuous 400°F (200°C)	Blue	32 AWG (0.2 mm) to 14 AWG maximum (2.0 mm)	—
<u>THMT-SJ</u>	1	0.5	\$6.25		Standard round pin jack				
<u>THMT-SPJ</u>	1	0.5	\$10.50		Standard round direct mount jack				
<u>THMT-MP</u>	1	0.5	\$4.00		Miniature flat pin plug			40 AWG (0.08 mm) to 20 AWG maximum (0.8 mm)	WCB-M
<u>THMT-MJ</u>	1	0.5	\$4.50		Miniature flat pin jack				
<u>THMT-MPJ</u>	1	0.5	\$9.75		Miniature round direct mount jack				
<u>RTD-SP</u>	1	0.5	\$9.25	RTD	Standard round pin plug		White	32 AWG (0.2 mm) to 14 AWG maximum (2.0 mm)	WCB-S
<u>RTD-SJ</u>	1	0.5	\$12.00		Standard round pin jack				
<u>NTC-SJ</u>	1	0.5	\$6.75	Thermistor	Standard round pin jack				

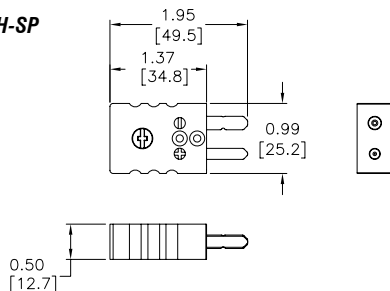
[THMT-SP](#)[THMT-SJ](#)[THMK-SP](#)[THMK-SJ](#)[THMK-MP](#)[THMJ-MJ](#)[THMT-SPJ](#)[THMT-MPJ](#)[RTD-SP](#)[RTD-SJ](#)[THMK-HSP](#)[THMK-HSJ](#)[NTC-SJ](#)

prosense® Thermocouple, RTD, and Thermistor Connectors

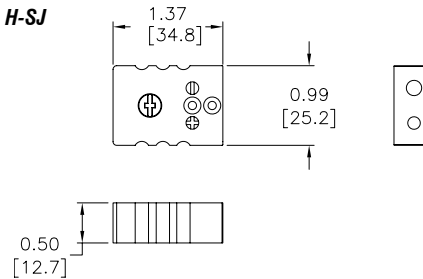
Dimensions

inches [mm]

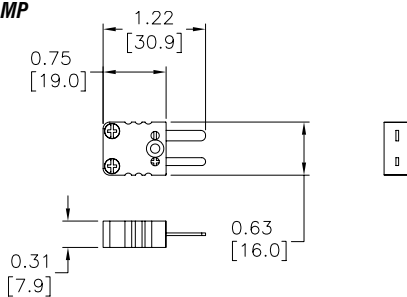
THMJ, K, T, & H-SP



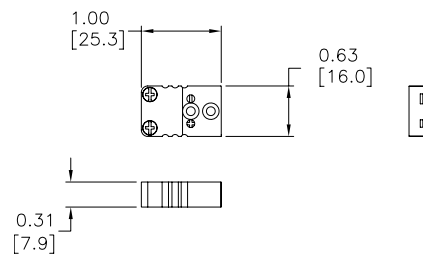
THMJ, K, T, & H-SJ



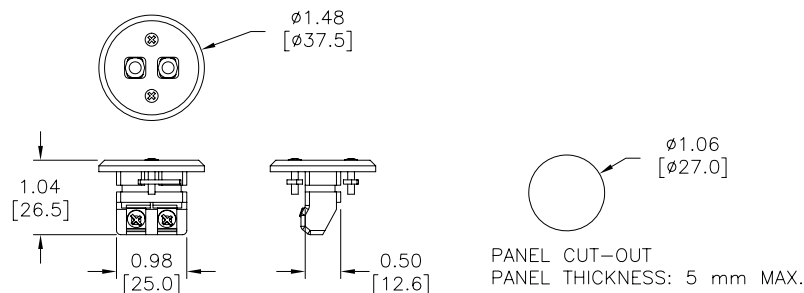
THMJ, K, & T-MP



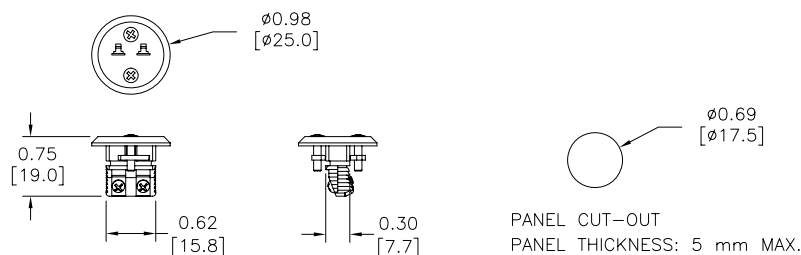
THMJ, K, & T-MJ



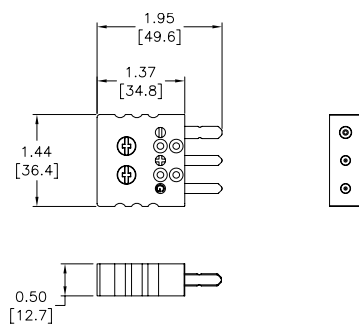
THMJ, K, & T-SPJ



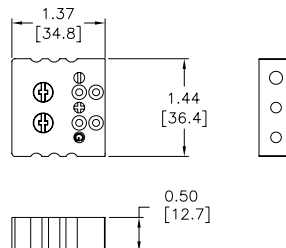
THMJ, K, & T-MPJ



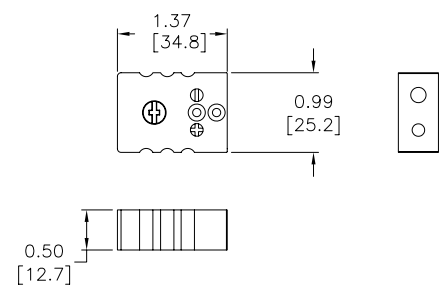
RTD-SP



RTD-SJ



NTC-SJ





Thermocouple and RTD Connectors

WCB-S



WCB-M



WCB-S Application



WCB-M Application

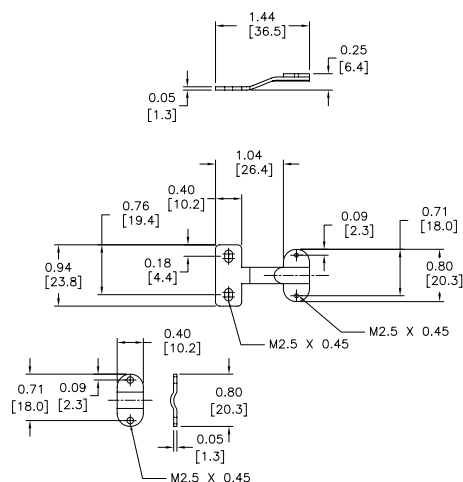


Thermocouple and RTD Connectors Accessories				
Part Number	Pcs/ Pkg	Wt(lb)	Price	Description
<u>WCB-S</u>	10	0.5	\$12.00	Wire / cable clamp bracket for use with standard thermocouple and RTD connectors.
<u>WCB-M</u>	10	0.5	\$12.00	Wire / cable clamp bracket for use with miniature thermocouple connectors.

Dimensions

inches [mm]

WCB-S



WCB-M

