

pro^{sense} Thermocouple Probes with Lead Wire Transition

THMJ, K & T - TXXL06-01, 02 & 03



Probe shown with optional CF18-BC adjustable bayonet cap compression mounting fitting



Overview

- All temperature sensors are pre-built stock items
- Type J, K or T thermocouple elements to meet many temperature sensing applications
- 1/8" or 1/4" Diameter, 316 stainless steel or Inconel Alloy 600 sheath to protect against harsh environments
- Magnesium Oxide (MgO) insulation provides vibration dampening and protection against thermal shock
- 6", 12" or 18" probe length
- Bendable probe to adapt to installation requirements
- Heavy duty lead wire transition with relief spring
- 6-foot lead wires with stainless steel overbraid
- Made in the USA



Thermocouple Probes with Lead Wire Transition - Types J, K and T									
Part Number	Pcs/Pkg	Wt (lb)	Price	Type	Probe Diameter (O.D)	Probe Length	Probe Material	Temperature Sensing Range	Mounting
THMJ-T06L06-01	1	0.4	\$33.00	J	1/8"	6"	316 stainless steel	0 to 521°C (32 to 970°F), lead wire transition rated to 400 °F (204 °C)	ProSense compression fitting (see accessories purchased separately)
THMJ-T12L06-01		0.6	\$35.00	J		12"			
THMJ-T18L06-01			\$36.00	J		18"			
THMK-T06L06-01		0.4	\$33.50	K		6"			
THMK-T12L06-01		0.6	\$35.00	K		12"			
THMK-T18L06-01			\$36.00	K		18"			
THMT-T06L06-01		0.4	\$32.50	T		6"			
THMT-T12L06-01		0.6	\$33.50	T		12"			
THMT-T18L06-01			\$36.00	T		18"			
THMJ-T06L06-02		0.4	\$36.00	J	1/4"	6"	316 stainless steel	0 to 720°C (32 to 1330°F), lead wire transition rated to 400 °F (204 °C)	
THMJ-T12L06-02		0.6	\$38.00	J		12"			
THMJ-T18L06-02			\$41.00	J		18"			
THMK-T06L06-02		0.4	\$36.00	K		6"			
THMK-T12L06-02		0.6	\$38.00	K		12"			
THMK-T18L06-02			\$41.00	K		18"			
THMK-T06L06-03		0.4	\$39.00	K		6"			
THMK-T12L06-03		0.6	\$45.50	K		12"			
THMK-T18L06-03			\$53.00	K		18"			
							Inconel Alloy 600	0 to 1149°C (32 to 2100°F), lead wire transition rated to 400 °F (204 °C)	

pro^{sense}® Thermocouple Probes with Lead Wire Transition

Technical Specifications	
Junction Type	Ungrounded
ASTM E230 Standard Limits of Error	±2.2°C (±4.0°F) or 0.75%, whichever is greater
Probe	ø1/8" or ø1/4", 316 stainless steel or Inconel Alloy 600 sheath, single thermocouple element is embedded in MgO powder
Probe Minimum Bend Radius	2 x sheath diameter
Minimum Installation Depth	1/8" O.D.: 1.75" (44.5 mm), 1/4" O.D.: 3" (76 mm)
Response Time	2.9 seconds, 63.2% of a 25-77°C step change per method ASTM E839
Wiring	6 foot stranded 20 AWG wire leads with stripped ends, fiberglass insulation and stainless steel overbraid

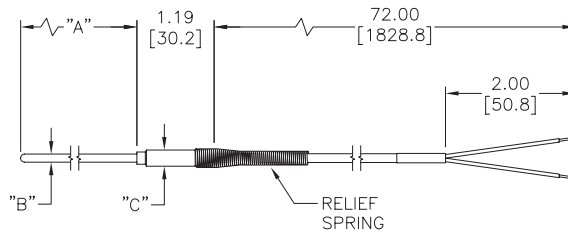


NOTE: CHECK THE CHEMICAL COMPATIBILITY OF THE SENSOR'S WETTED PARTS WITH THE MEDIUM TO BE MEASURED.

Dimensions

inches [mm]

THMJ, K & T - TXXL06-01, 02 & 03

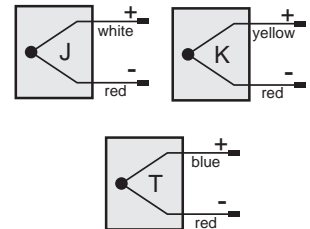


Wiring Information

Type J: (+) white (-) red
Type K: (+) yellow (-) red
Type T: (+) blue (-) red

- Must use thermocouple extension lead wire, see end of this section
- Observe polarity when making connections
- Do not use standard wire nuts

PART NUMBER	DIM "A"	DIM "B"	DIM "C"
THMJ-T06L06-01	6.00[152.4]	0.13[3.3]	0.25[6.35]
THMJ-T12L06-01	12.00[304.8]	0.13[3.3]	0.25[6.35]
THMJ-T18L06-01	18.00[457.2]	0.13[3.3]	0.25[6.35]
THMT-T06L06-01	6.00[152.4]	0.13[3.3]	0.25[6.35]
THMT-T12L06-01	12.00[304.8]	0.13[3.3]	0.25[6.35]
THMT-T18L06-01	18.00[457.2]	0.13[3.3]	0.25[6.35]
THMK-T06L06-01	6.00[152.4]	0.13[3.3]	0.25[6.35]
THMK-T12L06-01	12.00[304.8]	0.13[3.3]	0.25[6.35]
THMK-T18L06-01	18.00[457.2]	0.13[3.3]	0.25[6.35]
THMJ-T06L06-02	6.00[152.4]	0.25[6.35]	0.38[9.67]
THMJ-T12L06-02	12.00[304.8]	0.25[6.35]	0.38[9.67]
THMJ-T18L06-02	18.00[457.2]	0.25[6.35]	0.38[9.67]
THMK-T06L06-02	6.00[152.4]	0.25[6.35]	0.38[9.67]
THMK-T12L06-02	12.00[304.8]	0.25[6.35]	0.38[9.67]
THMK-T18L06-02	18.00[457.2]	0.25[6.35]	0.38[9.67]
THMK-T06L06-03	6.00[152.4]	0.25[6.35]	0.38[9.67]
THMK-T12L06-03	12.00[304.8]	0.25[6.35]	0.38[9.67]
THMK-T18L06-03	18.00[457.2]	0.25[6.35]	0.38[9.67]



pro^{sense}® Thermocouple Probes with Lead Wire Transition

Accessories

Part No.	Description	Pcs/Pkg	Price
BCF18-125N	Compression fitting, brass, for 1/8 inch diameter temperature probes, 1/8 inch NPT male thread	1	\$2.75
BCF14-125N	Compression fitting, brass, for 1/4 inch diameter temperature probes, 1/8 inch NPT male thread	1	\$2.75
BCF18-25N	Compression fitting, brass, for 1/8 inch diameter temperature probes, 1/4 inch NPT male thread	1	\$3.25
BCF14-25N	Compression fitting, brass, for 1/4 inch diameter temperature probes, 1/4 inch NPT male thread	1	\$3.25
BCF18-50N	Compression fitting, brass, for 1/8 inch diameter temperature probes, 1/2 inch NPT male thread	1	\$4.75
BCF14-50N	Compression fitting, brass, for 1/4 inch diameter temperature probes, 1/2 inch NPT male thread	1	\$4.75
CF18-125N	Compression fitting, 316 stainless steel, for 1/8 inch diameter temperature probes, 1/8 inch NPT male thread	1	\$7.00
CF14-125N	Compression fitting, 316 stainless steel, for 1/4 inch diameter temperature probes, 1/8 inch NPT male thread	1	\$7.00
CF18-25N	Compression fitting, 316 stainless steel, for 1/8 inch diameter temperature probes, 1/4 inch NPT male thread	1	\$8.00
CF14-25N	Compression fitting, 316 stainless steel, for 1/4 inch diameter temperature probes, 1/4 inch NPT male thread	1	\$8.00
CF18-50N	Compression fitting, 316 stainless steel, for 1/8 inch diameter temperature probes, 1/2 inch NPT male thread	1	\$11.50
CF14-50N	Compression fitting, 316 stainless steel, for 1/4 inch diameter temperature probes, 1/2 inch NPT male thread	1	\$12.00
CFTF-18	Teflon ferrule for brass or stainless steel compression fittings and 1/8 diameter temperature probes	5	\$6.75
CFTF-14	Teflon ferrule for brass or stainless steel compression fittings and 1/4 diameter temperature probes	5	\$7.25
CF18-BC	Bayonet adapter, 7/8 inch long, 7/16 inch outside diameter, 9/32 inch inside diameter, 1/8 inch MNPT	1	\$8.75
THMJ-SP	Thermocouple connector, Type J, standard round pin plug, maximum continuous temperature 400 F (200 C), glass filled thermoplastic black body, thermocouple material pins, 14 AWG maximum (2.0 mm) wire size	1	\$3.50
THMJ-SJ	Thermocouple connector, Type J, standard round pin jack, maximum continuous temperature 400 F (200 C), glass filled thermoplastic black body, thermocouple material pins, 14 AWG maximum (2.0 mm) wire size	1	\$4.50
THMK-SP	Thermocouple connector, Type K, standard round pin plug, maximum continuous temperature 400 F (200 C), glass filled thermoplastic yellow body, thermocouple material pins, 14 AWG maximum (2.0 mm) wire size	1	\$4.00
THMK-SJ	Thermocouple connector, Type K, standard round pin jack, maximum continuous temperature 400 F (200 C), glass filled thermoplastic yellow body, thermocouple material pins, 14 AWG maximum (2.0 mm) wire size	1	\$4.75
THMK-HSP	Thermocouple connector, Type K, high-temperature standard round pin plug, maximum continuous temperature 662 F (350 C), thermoset brown body, thermocouple material pins, 14 AWG (2.0 mm) maximum wire size	1	\$9.25
THMK-HSJ	Thermocouple connector, Type K, high-temperature standard round pin jack, maximum continuous temperature 662 F (350 C), thermoset brown body, thermocouple material pins, 14 AWG (2.0 mm) maximum wire size	1	\$11.00
THMT-SP	Thermocouple connector, Type T, standard round pin plug, maximum continuous temperature 400 F (200 C), glass filled thermoplastic blue body, thermocouple material pins, 14 AWG (2.0 mm) maximum wire size	1	\$3.75
THMT-SJ	Thermocouple connector, Type T, standard round pin jack, maximum continuous temperature 400 F (200 C), glass filled thermoplastic blue body, thermocouple material pins, 14 AWG (2.0 mm) maximum wire size	1	\$5.00
THMJ-MP	Thermocouple connector, Type J, miniature flat pin plug, maximum continuous temperature 400 F (200 C), glass filled thermoplastic black body, thermocouple material pins, 20 AWG maximum (0.8 mm) wire size	1	\$3.25
THMJ-MJ	Thermocouple connector, Type J, miniature flat pin jack, maximum continuous temperature 400 F (200 C), glass filled thermoplastic black body, thermocouple material pins, 20 AWG maximum (0.8 mm) wire size	1	\$3.75
THMK-MP	Thermocouple connector, Type K, miniature flat pin plug, maximum continuous temperature 400 F (200 C), glass filled thermoplastic yellow body, thermocouple material pins, 20 AWG maximum (0.8 mm) wire size	1	\$3.50
THMK-MJ	Thermocouple connector, Type K, miniature flat pin jack, maximum continuous temperature 400 F (200 C), glass filled thermoplastic yellow body, thermocouple material pins, 20 AWG maximum (0.8 mm) wire size	1	\$3.75
THMT-MP	Thermocouple connector, Type T, miniature flat pin plug, maximum continuous temperature 400 F (200 C), glass filled thermoplastic blue body, thermocouple material pins, 20 AWG (0.8 mm) maximum wire size	1	\$3.50
THMT-MJ	Thermocouple connector, Type T, miniature flat pin jack, maximum continuous temperature 400 F (200 C), glass filled thermoplastic blue body, thermocouple material pins, 20 AWG (0.8 mm) maximum wire size	1	\$4.00
WCB-S	Wire / cable clamp bracket for use with standard thermocouple and RTD connectors.	4	\$5.50
WCB-M	Wire / cable clamp bracket for use with miniature thermocouple connectors.	4	\$5.50
THMJ-SPJ	Thermocouple connector, Type J, standard round pin panel jack, maximum continuous temperature 400 F (200 C), glass filled thermoplastic black body, thermocouple material pins, 14 AWG (2.0 mm) maximum wire size	1	\$8.50
THMK-SPJ	Thermocouple connector, Type K, standard round pin panel jack, maximum continuous temperature 400 F (200 C), glass filled thermoplastic yellow body, thermocouple material pins, 14 AWG (2.0 mm) maximum wire size	1	\$8.25
THMT-SPJ	Thermocouple connector, Type T, standard round pin panel jack, maximum continuous temperature 400 F (200 C), glass filled thermoplastic blue body, thermocouple material pins, 14 AWG (2.0 mm) maximum wire size	1	\$8.25
THMJ-MPJ	Thermocouple connector, Type J, miniature flat pin panel jack, maximum continuous temperature 400 F (200 C), glass filled thermoplastic black body, thermocouple material pins, 14 AWG (2.0 mm) maximum wire size	1	\$5.50
THMK-MPJ	Thermocouple connector, Type K, miniature flat pin panel jack, maximum continuous temperature 400 F (200 C), glass filled thermoplastic yellow body, thermocouple material pins, 14 AWG (2.0 mm) maximum wire size	1	\$6.00
THMT-MPJ	Thermocouple connector, Type T, miniature flat pin panel jack, maximum continuous temperature 400 F (200 C), glass filled thermoplastic blue body, thermocouple material pins, 14 AWG (2.0 mm) maximum wire size	1	\$6.25

Note: Thermocouple extension lead wire available at the end of this section.

See end of section for full listing of accessories and dimension information.

*Working pressure of compression fitting should not exceed 500 psi. However we recommend any pressure application use a thermowell

THMJ-SPJ



CF14-25N



BCF18-125N



pro^oense[®] Compression Mounting Fittings for Temperature Probes

Compression Mounting Fittings for Temperature Probes				
Part Number	Description	Pcs/Pkg	Wt(lb)	Price
BCF18-125N	Compression fitting, brass, for 1/8 inch diameter temperature probes, 1/8 inch NPT male thread	1	0.5	\$2.75
BCF14-125N	Compression fitting, brass, for 1/4 inch diameter temperature probes, 1/8 inch NPT male thread	1	0.5	\$2.75
BCF18-25N	Compression fitting, brass, for 1/8 inch diameter temperature probes, 1/4 inch NPT male thread	1	0.5	\$3.25
BCF14-25N	Compression fitting, brass, for 1/4 inch diameter temperature probes, 1/4 inch NPT male thread	1	0.5	\$3.25
BCF18-50N	Compression fitting, brass, for 1/8 inch diameter temperature probes, 1/2 inch NPT male thread	1	0.5	\$4.75
BCF14-50N	Compression fitting, brass, for 1/4 inch diameter temperature probes, 1/2 inch NPT male thread	1	0.5	\$4.75
CF18-125N	Compression fitting, 316 stainless steel, for 1/8 inch diameter temperature probes, 1/8 inch NPT male thread	1	0.5	\$7.00
CF14-125N	Compression fitting, 316 stainless steel, for 1/4 inch diameter temperature probes, 1/8 inch NPT male thread	1	0.5	\$7.00
CF18-25N	Compression fitting, 316 stainless steel, for 1/8 inch diameter temperature probes, 1/4 inch NPT male thread	1	0.5	\$8.00
CF14-25N	Compression fitting, 316 stainless steel, for 1/4 inch diameter temperature probes, 1/4 inch NPT male thread	1	0.5	\$8.00
CF18-50N	Compression fitting, 316 stainless steel, for 1/8 inch diameter temperature probes, 1/2 inch NPT male thread	1	0.5	\$11.50
CF14-50N	Compression fitting, 316 stainless steel, for 1/4 inch diameter temperature probes, 1/2 inch NPT male thread	1	0.5	\$12.00
CFTF-18	Teflon™ ferrule for brass or stainless steel compression fittings and 1/8 diameter temperature probes	5	0.5	\$6.75
CFTF-14	Teflon ferrule for brass or stainless steel compression fittings and 1/4 diameter temperature probes	5	0.5	\$7.25
CF06-25N	1/4 NPT stainless steel compression fitting for 0.24 inch (6 mm) diameter RTD probe with M12 connector.	1	0.18	\$25.50
CF10-50N	1/2 NPT stainless steel compression fitting for 10 mm (0.4 inch) diameter RTD probe with M12 connector.	1	0.20	\$27.00
CF18-BC	Bayonet compression fitting, for 1/8" diameter probe sheath sensors	1	0.1	\$8.75
BB125N-50N	Reducing bushing, brass, 1/2 MNPT x 1/8 FNPT, hex head	1	0.1	\$4.75

NOTE: CHECK THE CHEMICAL COMPATIBILITY OF THE SENSOR'S WETTED PARTS WITH THE MEDIUM TO BE MEASURED.

**Working pressure of compression fitting should not exceed 500 psi. However we recommend any pressure application use a thermowell*

BCF18-125N



BCF18-25N



BCF18-50N



BB125N-50N



CFTF-14



CFTF-18



CF14-125N



CF14-50N



CF14-25N



CF18-BC



CF06-25N



CF10-50N



pro^{sense}® Compression Mounting Fittings for Temperature Probes

BCF14-125N



BCF14-25N



BCF14-50N



CF18-25N



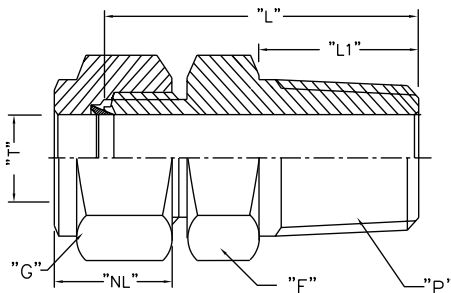
CF18-50N



CF18-125N



Dimensions



Note: All threaded connections should be hand tightened and then turned 1 to 2 full turns for proper sealing.

Actual torque required for a proper seal of NPT threads is influenced by tolerance, sealant, lubricant, etc.

ProSense Compression Fittings									
Part No.	Weight (lb)	Description	"T" Tube O.D.	"P" NPT(M)	"L" Body Length*	"L1" Thread Length**	"F" Body Hex**	"G" Nut Hex**	"NL" Nut Length**
BCF18-125N/CF18-125N	0.5	1/8" OD x 1/8" NPT(M)	0.128/0.132	1/8" NPT(M)	0.909"	0.393"	0.5"	0.433"	0.492"
BCF14-125N/CF14-125N	0.5	1/4" OD x 1/8" NPT(M)	0.253/0.257	1/8" NPT(M)	1.0"	0.393"	0.5"	0.559"	0.5"
BCF18-25N/CF18-25N	0.5	1/8" OD x 1/4" NPT(M)	0.128/0.132	1/4" NPT(M)	1.114"	0.551"	0.551"	0.433"	0.492"
BCF14-25N/CF14-25N	0.5	1/4" OD x 1/4" NPT(M)	0.253/0.257	1/4" NPT(M)	1.188"	0.551"	0.551"	0.559"	0.5"
BCF18-50N/CF18-50N	0.5	1/8" OD x 1/2" NPT(M)	0.128/0.132	1/2" NPT(M)	1.377"	0.748"	0.866"	0.433"	0.492"
BCF14-50N/CF14-50N	0.5	1/4" OD x 1/2" NPT(M)	0.253/0.257	1/2" NPT(M)	1.437"	0.748"	0.866"	0.559"	0.5"
CF06-25N	0.18	6 mm OD x 1/4" NPT(M)	0.236/0.240	1/4" NPT(M)	1.174"	0.59"	0.67"	0.55"	0.587"
CF10-50N	0.20	10 mm OD x 1/2" NPT(M)	0.394/0.399	1/2" NPT(M)	1.458"	0.55"	1.06"	0.75"	0.608"

Note: All dimensions are in inches

** ± 0.07*

*** ± 0.03*

Note: Once the compression fitting has been fully tightened on the probe, the ferrule will be locked onto the probe and cannot be removed or reused.

**Working pressure of compression fitting should not exceed 500 psi. However we recommend any pressure application use a thermowell*



Scan the QR Code or click to view the CF06 & CF10 Compression Fitting Installation Instructions



Bayonet Mounting Adapter for Temperature Sensors

Bayonet Mounting Adapter for Temperature Sensors					
Part Number	Description	Material	Pcs/Pkg	Wt(lb)	Price
BA-078	Bayonet adapter, 7/8 inch long, 7/16 inch outside diameter, 9/32 inch inside diameter, 1/8 inch MNPT	Stainless Steel (304)	1	0.5	\$1.50
BA-100	Bayonet adapter, 1 inch long, 7/16 inch outside diameter, 9/32 inch inside diameter, 1/8 inch MNPT		1	0.5	\$1.50
BA-114	Bayonet adapter, 1-1/4 inch long, 7/16 inch outside diameter, 9/32 inch inside diameter, 1/8 inch MNPT		1	0.5	\$2.00
BA-112	Bayonet adapter, 1-1/2 inch long, 7/16 inch outside diameter, 9/32 inch inside diameter, 1/8 inch MNPT		1	0.5	\$2.00
BA-200	Bayonet adapter, 2 inch long, 7/16 inch outside diameter, 9/32 inch inside diameter, 1/8 inch MNPT		1	0.5	\$2.25
BA-212	Bayonet adapter, 2-1/2 long, 7/16 inch outside diameter, 9/32 inch inside diameter, 1/8 inch MNPT		1	0.5	\$2.50
BA-300	Bayonet adapter, 3 inch long, 7/16 inch outside diameter, 9/32 inch inside diameter, 1/8 inch MNPT		1	0.5	\$2.75
BA-312	Bayonet adapter, 3-1/2 long, 7/16 inch outside diameter, 9/32 inch inside diameter, 1/8 inch MNPT		1	0.5	\$3.00
CF18-BC	Adjustable bayonet compression fitting, for 1/8" diameter probe sheath sensors	Brass	1	0.1	\$8.75
BB125N-50N	Reducing bushing, 1/2 MNPT x 1/8 FNPT, hex head		1	0.1	\$4.75



NOTE: CHECK THE CHEMICAL COMPATIBILITY OF THE SENSOR'S WETTED PARTS WITH THE MEDIUM TO BE MEASURED.

BA-078



BA-100



BA-114



CF18-BC



BA-300



BA-112



BB125N-50N



BA-312



BA-200



BA-212



proSense® Pipe Clamp Adapters



PCA-300

Overview

- For use with ProSense adjustable immersion thermocouple and RTD sensors
- Available in adjustable diameters from 11/16 to 7 inches
- Provides an easy means of sensing temperature on the outside of a pipe

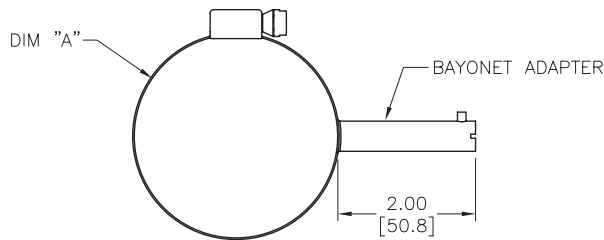


Shown with optional adjustable immersion sensor

Pipe Clamp Adapters for ProSense Adjustable Immersion Sensors				
Part Number	Description	Pcs/Pkg	Wt(lb)	Price
PCA-125	ProSense pipe clamp adapter, 11/16 to 1-1/4 inch adjustable diameter, 2-inch attached bayonet adapter with 7/16 inch outside diameter and 9/32 inch inside diameter. Use with ProSense adjustable immersion sensors.	1	0.1	\$15.50
PCA-200	ProSense pipe clamp adapter with 1-1/16 to 2 inch adjustable diameter, 2-inch attached bayonet adapter with 7/16 inch outside diameter and 9/32 inch inside diameter. Use with ProSense adjustable immersion sensors.	1	0.1	\$16.00
PCA-300	ProSense pipe clamp adapter with 2-1/16 to 3 inch adjustable diameter, 2-inch attached bayonet adapter with 7/16 inch outside diameter and 9/32 inch inside diameter. Use with ProSense adjustable immersion sensors.	1	0.1	\$17.50
PCA-425	ProSense pipe clamp adapter with 3-5/16 to 4-1/4 inch adjustable diameter, 2-inch attached bayonet adapter with 7/16 inch outside diameter and 9/32 inch inside diameter. Use with ProSense adjustable immersion sensors.	1	0.1	\$19.00
PCA-500	ProSense pipe clamp adapter with 4-1/8 to 7 inch adjustable diameter, 2-inch attached bayonet adapter with 7/16 inch outside diameter and 9/32 inch inside diameter. Use with ProSense adjustable immersion sensors.	1	0.1	\$18.50

Dimensions

inches [mm]



PART NUMBER	DIM "A"	FITS PIPE SIZES
PCA-125	ø0.68-1.25 [ø17.2-31.7]	1/2 TO 3/4 NPS
PCA-200	ø1.06-2.00 [ø26.9-50.8]	1 TO 1-1/2 NPS
PCA-300	ø2.06-3.00 [ø52.3-76.2]	2 TO 2-1/2 NPS
PCA-425	ø3.31-4.25 [ø84.1-108.0]	3 TO 3-1/2 NPS
PCA-500	ø4.12-7.00 [ø104.6-177.8]	4 TO 6 NPS

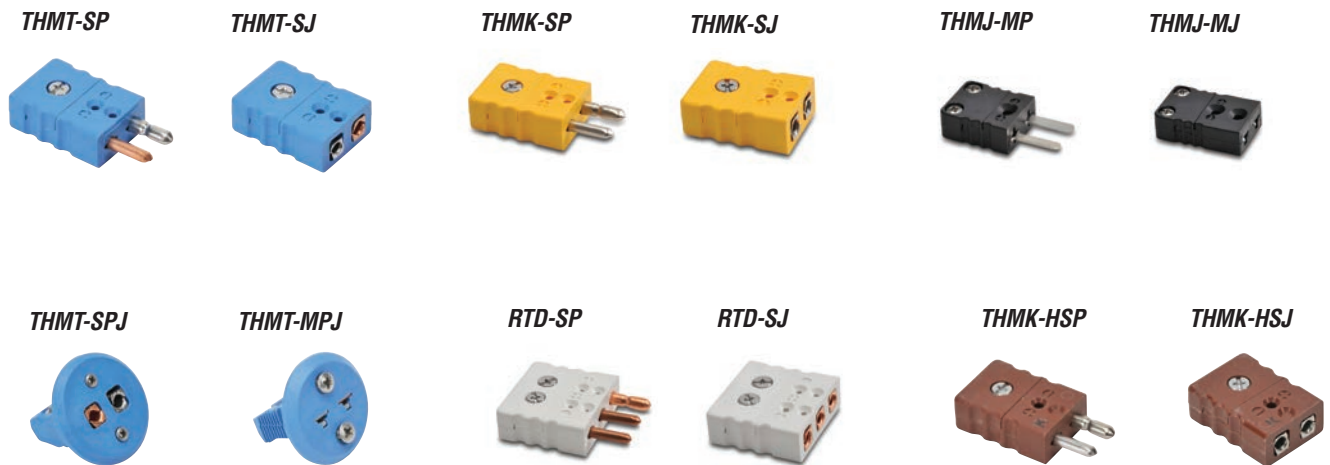
pro^{ense}® Thermocouple and RTD Connectors

Overview

- Glass-filled high quality thermoplastic body with original thermocouple material pins and spring-loaded inserts
- Polarized pins
- Molded barriers prevent short circuit
- Captive central cover screw for easy assembly
- Easy wire connection pressure plate construction
- Stainless steel screws with combination head (Slotted and Phillips)
- 3-pin standard connectors have a third pin for ground or continuous shield, or for 3-wire RTDs



Thermocouple and RTD Connectors									
Part Number	Pcs/ Pkg	Wt(lb)	Price	Sensor Type	Connector Type	Temperature Rating	Body Color	Wire Size	Wire Cable Clamp Bracket
THMJ-SP	1	0.5	\$3.50	J	Standard round pin plug	Max continuous 400°F (200°C)	Black	32 AWG (0.2 mm) to 14 AWG maximum (2.0 mm)	WCB-S
THMJ-SJ	1	0.5	\$4.50		Standard round pin jack				–
THMJ-SPJ	1	0.5	\$8.50		Standard round direct mount jack				–
THMJ-MP	1	0.5	\$3.25		Miniature flat pin plug			40 AWG (0.08 mm) to 20 AWG maximum (0.8 mm)	WCB-M
THMJ-MJ	1	0.5	\$3.75		Miniature flat pin jack				–
THMJ-MPJ	1	0.5	\$5.50		Miniature round direct mount jack				–
THMK-SP	1	0.5	\$4.00	K	Standard round pin plug	Max continuous 662°F (350°C)	Yellow	32 AWG (0.2 mm) to 14 AWG maximum (2.0 mm)	WCB-S
THMK-SJ	1	0.5	\$4.75		Standard round pin jack				–
THMK-SPJ	1	0.5	\$8.25		Standard round direct mount jack				–
THMK-MP	1	0.5	\$3.50		Miniature flat pin plug			40 AWG (0.08 mm) to 20 AWG maximum (0.8 mm)	WCB-M
THMK-MJ	1	0.5	\$3.75		Miniature flat pin jack				–
THMK-MPJ	1	0.5	\$6.00		Miniature round direct mount jack				–
THMK-HSP	1	0.5	\$9.25	RTD	Standard hi-temp round pin plug	Max continuous 662°F (350°C)	Brown	32 AWG (0.2 mm) to 14 AWG maximum (2.0 mm)	WCB-S
THMK-HSJ	1	0.5	\$11.00		Standard hi-temp round pin jack				–
THMT-SP	1	0.5	\$3.75	T	Standard round pin plug	Max continuous 400°F (200°C)	Blue	32 AWG (0.2 mm) to 14 AWG maximum (2.0 mm)	WCB-S
THMT-SJ	1	0.5	\$5.00		Standard round pin jack				–
THMT-SPJ	1	0.5	\$8.25		Standard round direct mount jack				–
THMT-MP	1	0.5	\$3.50		Miniature flat pin plug			40 AWG (0.08 mm) to 20 AWG maximum (0.8 mm)	WCB-M
THMT-MJ	1	0.5	\$4.00		Miniature flat pin jack				–
THMT-MPJ	1	0.5	\$6.25		Miniature round direct mount jack				–
RTD-SP	1	0.5	\$7.25	RTD	Standard round pin plug	White	32 AWG (0.2 mm) to 14 AWG maximum (2.0 mm)	WCB-S	
RTD-SJ	1	0.5	\$9.25		Standard round pin jack				

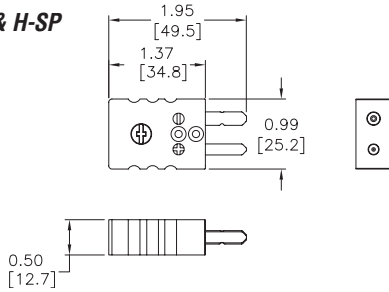


pro^{sense} Thermocouple and RTD Connectors

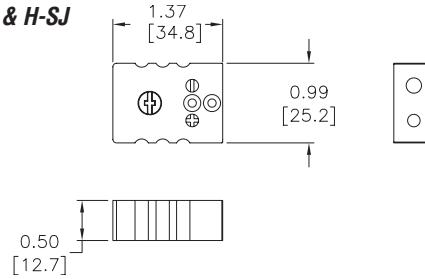
Dimensions

inches [mm]

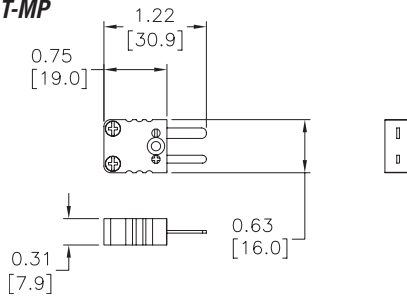
THMJ, K, T, & H-SP



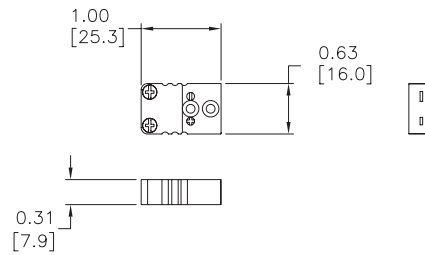
THMJ, K, T, & H-SJ



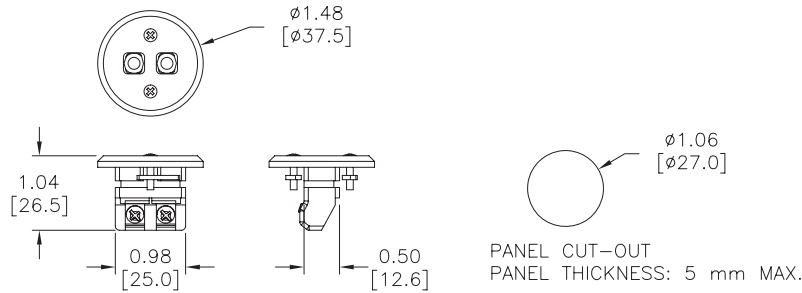
THMJ, K, & T-MP



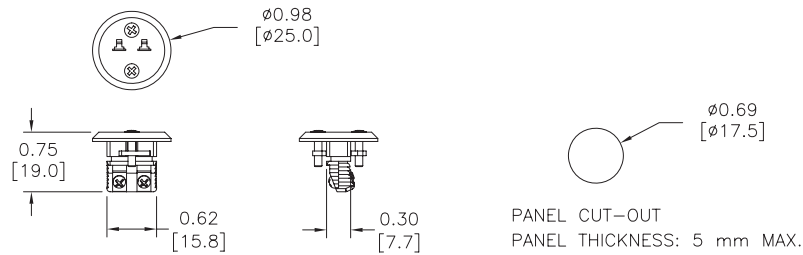
THMJ, K, & T-MJ



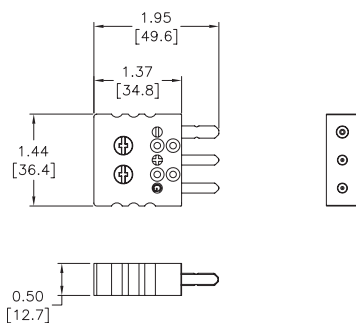
THMJ, K, & T-SPJ



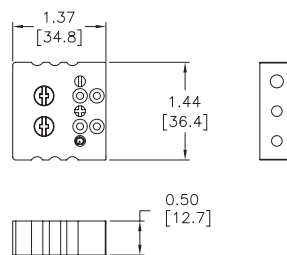
THMJ, K, & T-MPJ



RTD-SP



RTD-SJ



pro^{ense}® Thermocouple and RTD Connectors

WCB-S



WCB-S Application



WCB-M



WCB-M Application

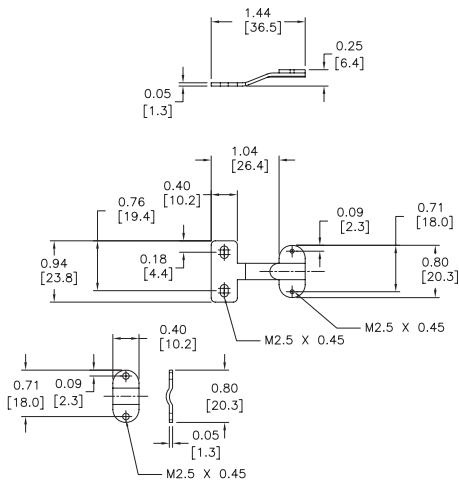


Thermocouple and RTD Connectors Accessories				
Part Number	Pcs/ Pkg	Wt(lb)	Price	Description
WCB-S	4	0.5	\$5.50	Wire / cable clamp bracket for use with standard thermocouple and RTD connectors.
WCB-M	4	0.5	\$5.50	Wire / cable clamp bracket for use with miniature thermocouple connectors.

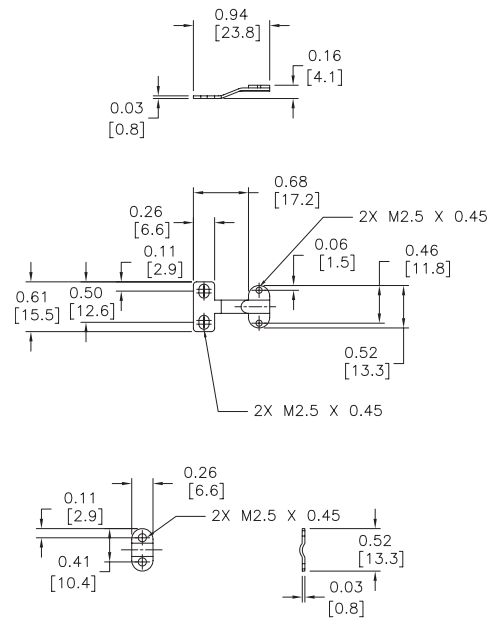
Dimensions

inches [mm]

WCB-S



WCB-M



pro^{ense}® Thermocouple and RTD Temperature Range

Thermocouple Temperature Range		
THMK-C06-04	32 to 2100°F (0 to 1149°C)	
THMK-C12-04		
THMK-C18-04		
THMK-H06L01-03		
THMK-H12L01-03		
THMK-H18L01-03	32 to 2100°F (0 to 1149°C) lead wire transition rated to 204°C (400°F)	
THMK-T06L06-03		
THMK-T12L06-03		
THMK-T18L06-03		
TTD25C-20-0300F-H		
TTD25N-20-0300F-H	0 to 300°F (-17.8 to 148.9°C)	
THMJ-A01L04-01	32 to 900°F (0 to 482°C)	
THMJ-A01L06-01		
THMJ-A01L10-01		
THMJ-A01L10-02		
THMJ-B01L06-01		
THMJ-B01L06-02		
THMJ-B02L06-01		
THMJ-B02L06-02		
THMJ-D08L04-01		
THMJ-D08L06-01		
THMJ-D08L10-01		
THMJ-D08L10-02		
THMK-A01L04-01		
THMK-A01L06-01		
THMK-A01L10-01		
THMK-A01L10-02		
THMK-B01L06-01		
THMK-B01L06-02		
THMK-D08L04-01		
THMK-D08L06-01		
THMK-D08L10-01		
THMK-D08L10-02		
THMJ-T06L06-01		32 to 970°F (0 to 521°C), lead wire transition rated to 400 °F (204 °C)
THMJ-T12L06-01		
THMJ-T18L06-01		
THMJ-P06-01	32 to 970°F (0 to 521°C), plug rated to 400 °F (204 °C)	
THMJ-P12-01		
THMJ-P18-01		
THMJ-C04-03	32 to 1330°F (0 to 720°C)	
THMJ-C04R-03		
THMJ-C06-01		
THMJ-C06-02		
THMJ-C06-03		
THMJ-C06R-03		
THMJ-C12-01		
THMJ-C12-02		
THMJ-C12-03		
THMJ-C12R-03		
THMJ-C18-01		
THMJ-C18-02		
THMJ-H04L01-02		
THMJ-H06L01-01		
THMJ-H06L01-02		
THMJ-H12L01-01		
THMJ-H12L01-02		
THMJ-H18L01-01		

Thermocouple Temperature Range		
THMJ-T06L06-02	32 to 1330°F (0 to 720°C) lead wire transition rated to 400 °F (204 °C)	
THMJ-T12L06-02		
THMJ-T18L06-02	32 to 1330°F (0 to 720°C) plug rated to 400 °F (204 °C)	
THMJ-P06-02		
THMJ-P12-02		
THMJ-P18-02	32 to 1700°F (0 to 927°C)	
THMK-C04-03		
THMK-C04R-03		
THMK-C06-01		
THMK-C06-02		
THMK-C06-03		
THMK-C06R-03		
THMK-C12-01		
THMK-C12-02		
THMK-C12-03		
THMK-C12R-03		
THMK-C18-01		
THMK-C18-02		
THMK-H04L01-02		
THMK-H06L01-01		
THMK-H06L01-02		
THMK-H12L01-01		
THMK-H12L01-02		
THMK-H18L01-01		
THMK-T06L06-01		32 to 1700°F (0 to 927°C) lead wire transition rated to 400 °F (204 °C)
THMK-T06L06-02		
THMK-T12L06-01		
THMK-T12L06-02		32 to 1700°F (0 to 927°C) plug rated to 400 °F (204 °C)
THMK-T18L06-01		
THMK-T18L06-02		
THMK-P06-01	32 to 1700°F (0 to 927°C) plug rated to 400 °F (204 °C)	
THMK-P06-02		
THMK-P12-01		
THMK-P12-02	32 to 900°F (0 to 482°C)	
THMK-P18-01		
THMK-P18-02		
THMK-B02L06-01	-328 to 700°F (-200 to 371°C) plug rated to 400 °F (204 °C)	
THMK-B02L06-02		
THMT-P06-01		
THMT-P12-01	-328 to 700°F (-200 to 371°C), lead wire transition rated to 400 °F (204 °C)	
THMT-P18-01		
THMT-T06L06-01		
THMT-T12L06-01	32 to 212°F (0 to 100°C)	
THMT-T18L06-01		
TTD25C-20-0100C-H	-4 to 284°F (-20 to 140°C)	
TTD25N-20-0100C-H		
TSD25N-0P-0284-H		

RTD Temperature Range	
RTD1-R01-01	40 to 185°F (-40 to 85°C)
RTD1-S04-01	-58 to 572°F (-50 to 300°C)
RTD1-S04-02	
RTD1-S04-03	
RTD1-S04-04	
RTD1-B01L06-01	
RTD1-B02L06-01	
RTD1-C04-03	
RTD1-C04R-03	
RTD1-C06-01	
RTD1-C06-03	
RTD1-C06R-03	
RTD1-C12-01	
RTD1-C12-02	
RTD1-C12-03	
RTD1-C12R-03	
RTD1-C18-01	-58 to 572°F (-50 to 300°C) Plug rated to 400°F (204°C)
RTD1-C18-02	
RTD1-H04L01-02	
RTD1-H06L01-01	-58 to 572°F (-50 to 300°C), lead wire transition rated to 400°F (204°C)
RTD1-H06L01-02	
RTD1-H12L01-01	
RTD1-H12L01-02	
RTD1-H18L01-01	
RTD1-P06-01	
RTD1-P12-01	
RTD1-P18-01	
RTD1-D08L10-01	
RTD1-T06L06-01	
RTD1-T12L06-01	
RTD1-T18L06-01	

J, K, & T Thermocouple Color Code

	White	+
J	Red	-
	Yellow	+
K	Red	-
	Blue	+
T	Blue	+
	Red	-