

pro^{sense} Thermocouple Probes with Hex Nipple

THMJ & K - HXXL01-01 & 03



CHSC-AL-1



CHTB-2

Accessories

Overview

- Type J or K thermocouple elements to meet many temperature sensing applications
- 1/4" diameter, 316 SS or Inconel Alloy 600 sealed sheath to protect from harsh sensing applications
- Magnesium Oxide (MgO) insulation provides vibration dampening and protection against thermal shock
- 6", 12" or 18" probe length
- Bendable probe to adapt to installation requirements
- 316SS, 1/2 x 1/2 NPT hex nipple allows easy replacement of existing probes and connection to a wiring junction box
- Made in the USA

| Thermocouple Probes with Hex Nipple - Types J and K | | | | | | | | | |
|---|---------|---------|---------|------|-----------------------|--------------|---------------------|-------------------------------|---|
| Part Number | Pcs/Pkg | Wt (lb) | Price | Type | Probe Diameter (O.D.) | Probe Length | Probe Material | Temperature Sensing Range | Mounting |
| THMJ-H06L01-01 | 1 | 0.5 | \$39.00 | J | 1/4" | 6" | 316 stainless steel | 0 to 720°C (32 to 1330°F) | Integral 1/2" x 1/2" NPT Hex Nipple, 316 SS |
| THMJ-H12L01-01 | | | \$41.00 | J | | 12" | | | |
| THMJ-H18L01-01 | | | \$45.00 | J | | 18" | | | |
| THMK-H06L01-01 | | | \$39.00 | K | | 6" | | | |
| THMK-H12L01-01 | | | \$41.00 | K | | 12" | | | |
| THMK-H18L01-01 | | | \$45.00 | K | | 18" | | | |
| THMK-H06L01-03 | | | \$40.00 | K | | 6" | Inconel Alloy 600 | 0 to 1149°C (32 to 2100°F) | |
| THMK-H12L01-03 | | | \$47.50 | K | | 12" | | | |
| THMK-H18L01-03 | | | \$54.00 | K | | 18" | | | |

| Technical Specifications | |
|------------------------------------|---|
| Junction Type | Ungrounded |
| ASTM E230 Standard Limits of Error | ±2.2°C (±4.0°F) or 0.75%, whichever is greater |
| Probe | ø1/4", 316 stainless steel or Inconel Alloy 600 sheath, single thermocouple element is embedded in MgO powder |
| Probe Minimum Bend Radius | 2 x sheath diameter |
| Minimum Installation Depth | 3" (76mm) |
| Response Time | 2.9 seconds, 63.2% of a 25-77°C step change per method ASTM E839 |
| Wiring | 3 inch stranded 24 AWG wire leads with terminal pins, Teflon insulation |



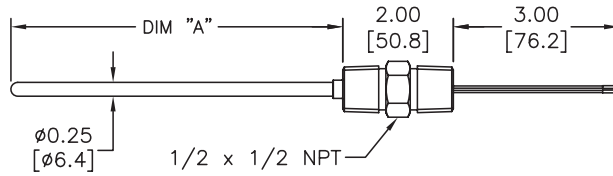
NOTE: CHECK THE CHEMICAL COMPATIBILITY OF THE SENSOR'S WETTED PARTS WITH THE MEDIUM TO BE MEASURED. Not designed for use in a thermowell. Use spring-loaded probe when installing in a thermowell.

ProSense® Thermocouple Probes with Hex Nipple

Dimensions

inches [mm]

THMJ & K - HXXL01-01 & 03

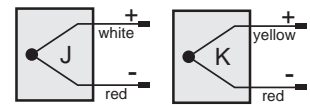


| PART NUMBER | DIM "A" |
|----------------|--------------|
| THMJ-H06L01-01 | 6.00[152.4] |
| THMJ-H12L01-01 | 12.00[304.8] |
| THMJ-H18L01-01 | 18.00[457.2] |
| THMK-H06L01-01 | 6.00[152.4] |
| THMK-H12L01-01 | 12.00[304.8] |
| THMK-H18L01-01 | 18.00[457.2] |
| THMK-H06L01-03 | 6.00[152.4] |
| THMK-H12L01-03 | 12.00[304.8] |
| THMK-H18L01-03 | 18.00[457.2] |

Wiring Information

Type J: (+) white (-) red
Type K: (+) yellow (-) red

- Must use thermocouple extension lead wire
- Observe polarity when making connections
- Do not use standard wire nuts



Accessories

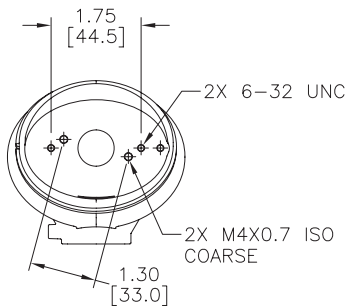
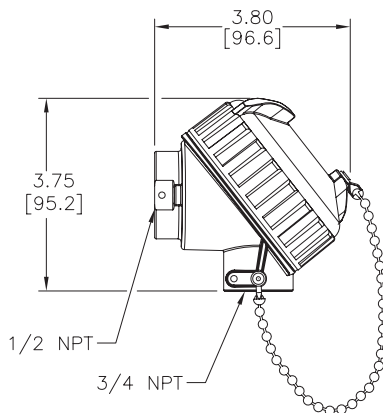
| Part No. | Description | Pcs/Pkg | Price |
|-----------|--|---------|---------|
| CHSC-AL-1 | ProSense general purpose screw cover connection head for temperature probes, die-cast aluminum, 1/2 inch NPT process opening, 3/4 inch NPT conduit opening, NEMA 4X, IP66 rated, graphite gasket, maximum temperature rating of 825°F (440°C). Order probe and terminal base separately. | 1 | \$16.50 |
| CHTB-2 | ProSense ceramic terminal base, two brass terminals with stainless steel screws, for use with ProSense temperature probe connection heads, two mounting screws included. | 1 | \$4.50 |

Note: Full listing of accessories at the end of this section. Thermocouple extension lead wire available at www.automationdirect.com.

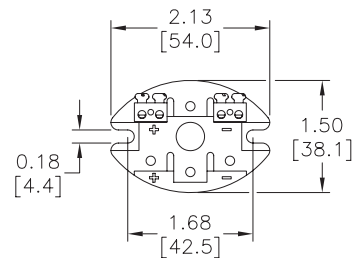
Dimensions

inches [mm]

CHSC-AL-1



CHTB-2



proSense® Thermocouple and RTD Connectors

Overview

- Glass-filled high quality thermoplastic body with original thermocouple material pins and spring-loaded inserts
- Polarized pins
- Molded barriers prevent short circuit
- Captive central cover screw for easy assembly
- Easy wire connection pressure plate
- construction
- Stainless steel screws with combination head (Slotted and Phillips)
- 3-pin standard connectors have a third pin for ground or continuous shield, or for 3-wire RTDs

| Thermocouple and RTD Connectors | | | | | | | | | |
|---------------------------------|----------|--------|---------|-------------|-----------------------------------|------------------------------|------------|---|--------------------------|
| Part Number | Pcs/ Pkg | Wt(lb) | Price | Sensor Type | Connector Type | Temperature Rating | Body Color | Wire Size | Wire Cable Clamp Bracket |
| THMJ-SP | 1 | 0.5 | \$3.50 | J | Standard round pin plug | Max continuous 400°F (200°C) | Black | 32 AWG (0.2 mm) to 14 AWG maximum (2.0 mm) | WCB-S |
| THMJ-SJ | 1 | 0.5 | \$4.50 | | Standard round pin jack | | | | - |
| THMJ-SPJ | 1 | 0.5 | \$8.50 | | Standard round direct mount jack | | | 40 AWG (0.08 mm) to 20 AWG maximum (0.8 mm) | WCB-M |
| THMJ-MP | 1 | 0.5 | \$3.25 | | Miniature flat pin plug | | | | - |
| THMJ-MJ | 1 | 0.5 | \$3.75 | | Miniature flat pin jack | | | | - |
| THMJ-MPJ | 1 | 0.5 | \$5.50 | | Miniature round direct mount jack | | | | - |
| THMK-SP | 1 | 0.5 | \$4.00 | K | Standard round pin plug | Max continuous 662°F (350°C) | Yellow | 32 AWG (0.2 mm) to 14 AWG maximum (2.0 mm) | WCB-S |
| THMK-SJ | 1 | 0.5 | \$4.75 | | Standard round pin jack | | | | - |
| THMK-SPJ | 1 | 0.5 | \$8.25 | | Standard round direct mount jack | | | 40 AWG (0.08 mm) to 20 AWG maximum (0.8 mm) | WCB-M |
| THMK-MP | 1 | 0.5 | \$3.50 | | Miniature flat pin plug | | | | - |
| THMK-MJ | 1 | 0.5 | \$3.75 | | Miniature flat pin jack | | | | - |
| THMK-MPJ | 1 | 0.5 | \$6.00 | | Miniature round direct mount jack | | | | - |
| THMK-HSP | 1 | 0.5 | \$9.25 | RTD | Standard hi-temp round pin plug | Max continuous 662°F (350°C) | Brown | 32 AWG (0.2 mm) to 14 AWG maximum (2.0 mm) | WCB-S |
| THMK-HSJ | 1 | 0.5 | \$11.00 | | Standard hi-temp round pin jack | | | | |
| THMT-SP | 1 | 0.5 | \$3.75 | T | Standard round pin plug | Max continuous 400°F (200°C) | Blue | 32 AWG (0.2 mm) to 14 AWG maximum (2.0 mm) | - |
| THMT-SJ | 1 | 0.5 | \$5.00 | | Standard round pin jack | | | | |
| THMT-SPJ | 1 | 0.5 | \$8.25 | | Standard round direct mount jack | | | 40 AWG (0.08 mm) to 20 AWG maximum (0.8 mm) | WCB-M |
| THMT-MP | 1 | 0.5 | \$3.50 | | Miniature flat pin plug | | | | - |
| THMT-MJ | 1 | 0.5 | \$4.00 | | Miniature flat pin jack | | | | - |
| THMT-MPJ | 1 | 0.5 | \$6.25 | | Miniature round direct mount jack | | | | - |
| RTD-SP | 1 | 0.5 | \$7.25 | RTD | Standard round pin plug | - | White | 32 AWG (0.2 mm) to 14 AWG maximum (2.0 mm) | WCB-S |
| RTD-SJ | 1 | 0.5 | \$9.25 | | Standard round pin jack | | | | |

THMT-SP



THMT-SJ



THMK-SP



THMK-SJ



THMJ-MP



THMJ-MJ



THMT-SPJ



THMT-MPJ



RTD-SP



RTD-SJ



THMK-HSP



THMK-HSJ

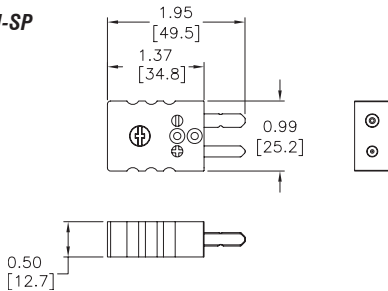


proense® Thermocouple and RTD Connectors

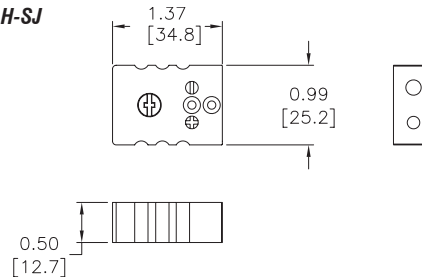
Dimensions

inches [mm]

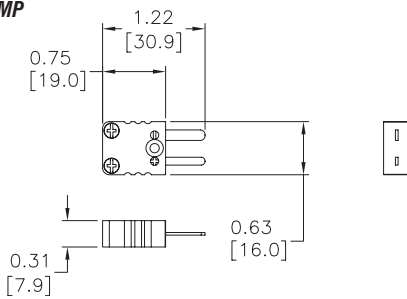
THMJ, K, T, & H-SP



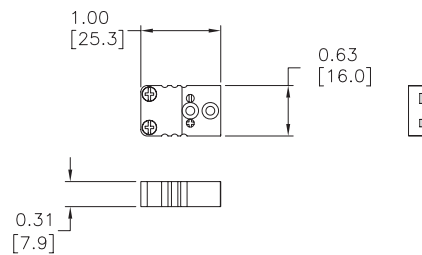
THMJ, K, T, & H-SJ



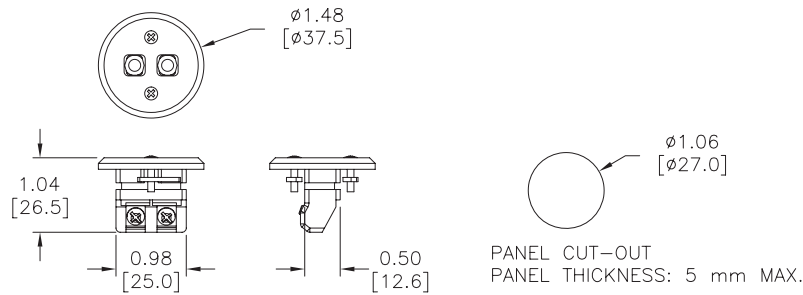
THMJ, K, & T-MP



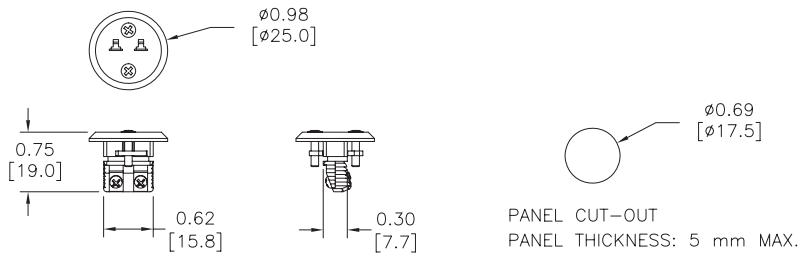
THMJ, K, & T-MJ



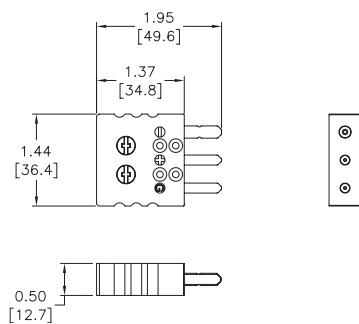
THMJ, K, & T-SPJ



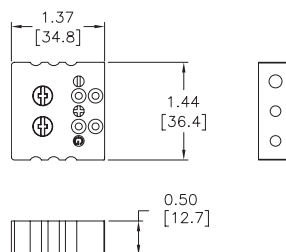
THMJ, K, & T-MPJ



RTD-SP



RTD-SJ



pro^{ense} Thermocouple and RTD Connectors

WCB-S



WCB-M



WCB-S Application



WCB-M Application

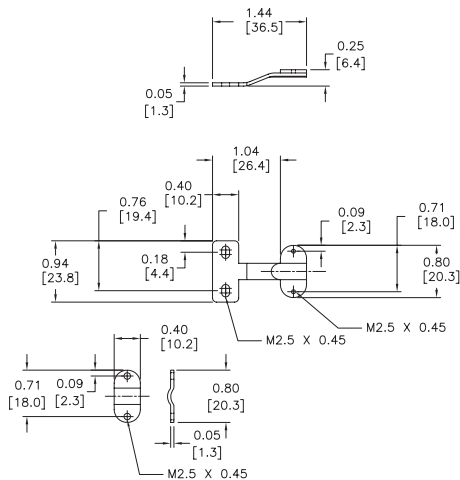


| Thermocouple and RTD Connectors Accessories | | | | |
|---|----------|--------|--------|---|
| Part Number | Pcs/ Pkg | Wt(lb) | Price | Description |
| WCB-S | 4 | 0.5 | \$5.50 | Wire / cable clamp bracket for use with standard thermocouple and RTD connectors. |
| WCB-M | 4 | 0.5 | \$5.50 | Wire / cable clamp bracket for use with miniature thermocouple connectors. |

Dimensions

inches [mm]

WCB-S



WCB-M

