

# proSense® Thermocouple Bolt-On Ring Sensors

THMJ & K - B01L06-01

THMJ & K - B01L06-02



## Overview

- Ideal thermocouple sensor for nozzles, extruder barrels, die heads, molds and many other surface sensing applications
- Type J or K thermocouple elements to meet many temperature sensing applications
- 316 SS or brass construction
- Grounded or ungrounded junctions
- 6 foot lead wires with stainless steel overbraid
- Made in the USA

Thermocouple Bolt-On Ring Sensors - Types J and K								
Part Number	Pcs/Pkg	Wt (lb)	Price	Type	Junction Type	Ring Material	Temperature Sensing Range	Mounting
THMJ-B01L06-01	1	0.4	\$17.50	J	Grounded	316 SS	0° to 482°C (32° to 900°F)	#6-#10 (4mm-5mm) screw or bolt size
THMK-B01L06-01			\$17.50	K				
THMJ-B01L06-02			\$27.50	J	Ungrounded	Brass		
THMK-B01L06-02			\$29.50	K				
THMJ-B02L06-01			\$18.50	J	Grounded	316 SS		#12, 1/4 to 5/16 inch (5mm - 8mm) screw or bolt size
THMK-B02L06-01			\$19.00	K				
THMJ-B02L06-02			\$27.50	J	Ungrounded	Brass		
THMK-B02L06-02			\$29.50	K				

Technical Specifications	
ASTM E230 Standard limits of Error	±2.2°C (±4.0°F) or 0.75%, whichever is greater
Response Time	2.9 seconds, 63.2% of a 25-77°C step change per method ASTM E839
Wiring	6 foot stranded 20 AWG wire leads with stripped ends, fiberglass insulation and stainless steel overbraid

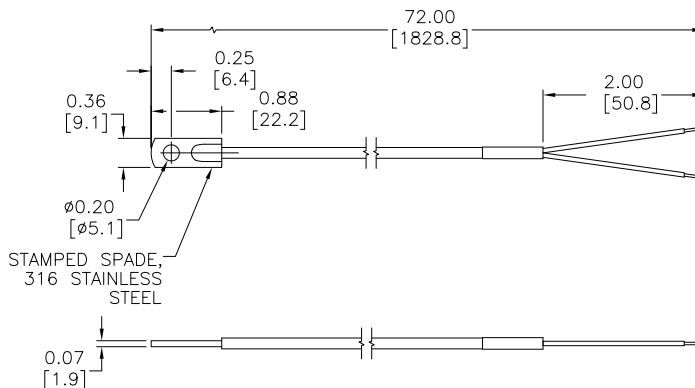


NOTE: CHECK THE CHEMICAL COMPATIBILITY OF THE SENSOR'S WETTED PARTS WITH THE MEDIUM TO BE MEASURED.

## Dimensions

inches [mm]

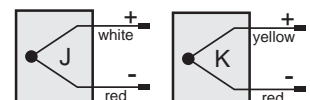
THMJ & K - B01L06-01



## Wiring Information

Type J: (+) white (-) red  
Type K: (+) yellow (-) red

- Must use thermocouple extension lead wire
- Observe polarity when making connections
- Do not use standard wire nuts

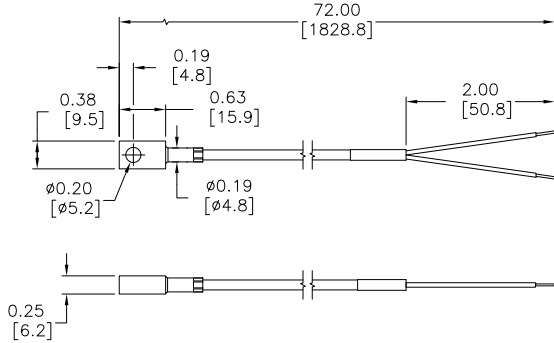


# prosense® Thermocouple Bolt-On Ring Sensors

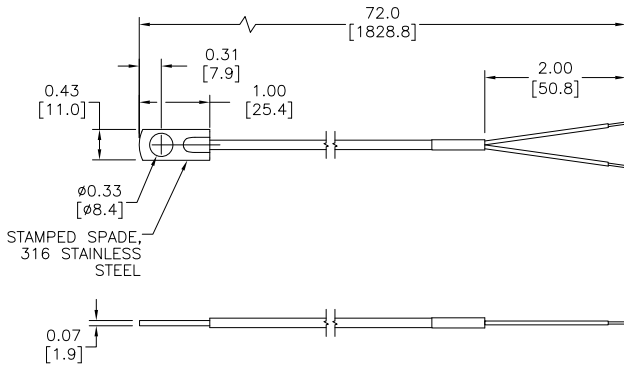
## Dimensions

inches [mm]

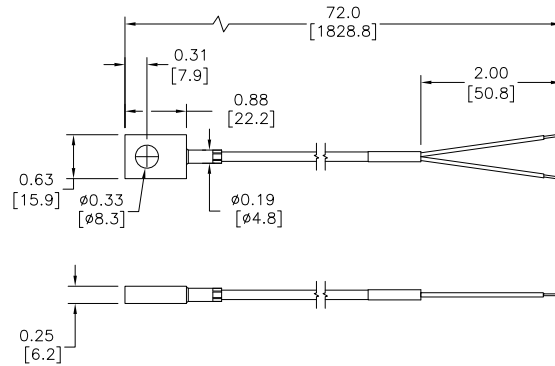
**THMJ & K - B01L06-02**



**THMJ & K - B02L06-01**



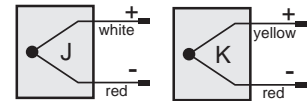
**THMJ & K - B02L06-02**



## Wiring Information

**Type J: (+) white (-) red**  
**Type K: (+) yellow (-) red**

- Must use thermocouple extension lead wire
- Observe polarity when making connections
- Do not use standard wire nuts



## Accessories

Part No.	Description	Pcs/Pkg	Price
<b>THMJ-SP</b>	Thermocouple connector, Type J, standard round pin plug, maximum continuous temperature 400°F (200°C), glass filled thermoplastic black body, thermocouple material pins, 14 AWG maximum (2.0 mm) wire size	1	\$3.50
<b>THMJ-SJ</b>	Thermocouple connector, Type J, standard round pin jack, maximum continuous temperature 400°F (200°C), glass filled thermoplastic black body, thermocouple material pins, 14 AWG maximum (2.0 mm) wire size	1	\$4.50
<b>THMK-SP</b>	Thermocouple connector, Type K, standard round pin plug, maximum continuous temperature 400°F (200°C), glass filled thermoplastic yellow body, thermocouple material pins, 14 AWG maximum (2.0 mm) wire size	1	\$4.00
<b>THMK-SJ</b>	Thermocouple connector, Type K, standard round pin jack, maximum continuous temperature 400°F (200°C), glass filled thermoplastic yellow body, thermocouple material pins, 14 AWG maximum (2.0 mm) wire size	1	\$4.75
<b>THMJ-SPJ</b>	Thermocouple connector, Type J, standard round pin panel jack, maximum continuous temperature 400°F (200°C), glass filled thermoplastic black body, thermocouple material pins, 14 AWG (2.0 mm) maximum wire size	1	\$8.50
<b>THMK-SPJ</b>	Thermocouple connector, Type K, standard round pin panel jack, maximum continuous temperature 400°F (200°C), glass filled thermoplastic yellow body, thermocouple material pins, 14 AWG (2.0 mm) maximum wire size	1	\$8.25
<b>WCB-S</b>	Wire / cable clamp bracket for use with standard thermocouple and RTD connectors.	4	\$5.50

Note: Thermocouple extension lead wire available at [www.automationdirect.com](http://www.automationdirect.com)  
 See end of section for full listing of accessories and dimension information.

**THMJ-SJ**



**THMJ-SP**



**THMJ-SPJ**



**Thermocouple Connectors**