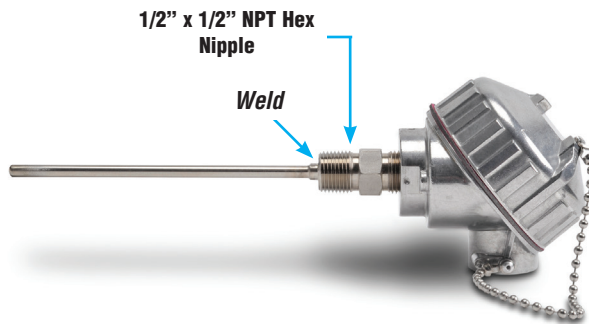
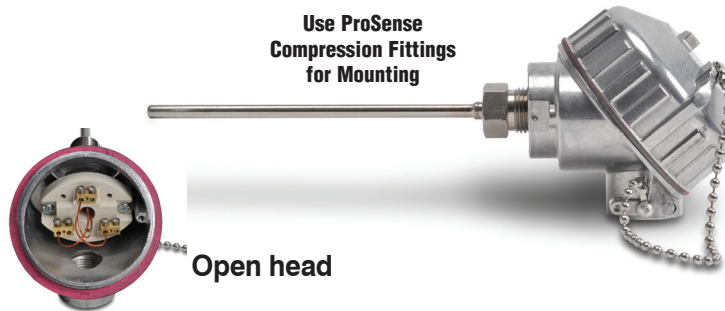


prosense® RTD Probes with Connection Head

RTD1-CXX-01



RTD1-CXX-02



Overview

- All temperature sensors are pre-built stock items
 - 100 ohm platinum RTD 3-wire element
 - Class A accuracy
 - 1/4" diameter, 316 SS sealed sheath to protect against harsh environments
 - RTD element encased in alumina powder insulation provides excellent vibration dampening and heat transfer
 - 6", 12" or 18" probe length
- Connection Head
 - Cast aluminum NEMA 4X, IP66 screw cover head with gasket
 - One turn cover removal & installation eliminates cross threading and saves time
 - 3/4" NPT conduit opening with internal stop to prevent overtightening and installation damage
 - Gripping ribs on cover edge
 - Stainless steel cover chain
- Wiring
 - Ceramic terminal base
 - Brass terminals with stainless steel screws eliminate the need to wrap connections around screws
 - Elevated terminal block for easy wire termination
- Made in the USA



RTD Probes with Connection Head								
Part Number	Pcs/Pkg	Wt (lb)	Price	RTD Type	Probe Diameter (O.D.)	Probe Length	Temperature Sensing Range	Mounting
RTD1-C06-01	1	1.3	\$71.00	PT 100, 3-wire	1/4"	6"	-50 to 300°C (-58 to 572°F)	Integral 1/2" x 1/2" NPT Hex Nipple, 316 SS
RTD1-C12-01			\$73.00			12"		
RTD1-C18-01			\$76.00			18"		
RTD1-C06-02			\$66.00			6"		ProSense compression fitting (see accessories - purchased separately)
RTD1-C12-02			\$68.00			12"		
RTD1-C18-02			\$71.00			18"		

Technical Specifications	
Sensing Element	Single 100 ohm platinum (Pt 100), 3-wire; TCR = 0.00385 ohm/ohm/°C
Initial Accuracy	Class A $\pm[0.15 + 0.002 t]$ °C
Probe	ø1/4", 316 stainless steel sheath, single RTD is embedded in alumina powder
Minimum Installation Depth	3" (76 mm)
Connection Head	Die-cast aluminum, screw cover with stainless steel chain, compressed graphite gasket, NEMA 4X, IP66, 3/4" NPT conduit opening, max temp. 400°F (204°C)
Response Time	7 seconds, 63% of a 25 to 77°C step change (ASTM E1137)
Wiring	Ceramic terminal base with brass terminals and stainless steel screws (recommended tightening torque 3-4 lb-in)



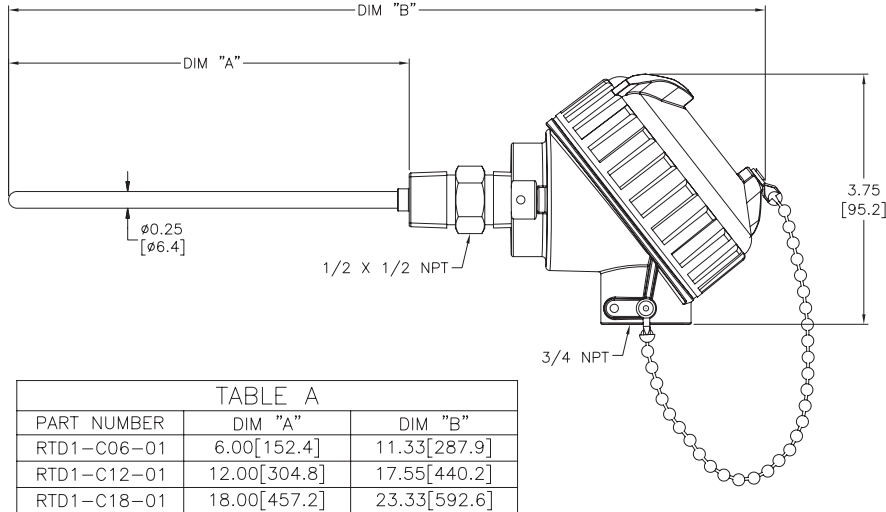
NOTE: CHECK THE CHEMICAL COMPATIBILITY OF THE SENSOR'S WETTED PARTS WITH THE MEDIUM TO BE MEASURED.

prosense® RTD Probes with Connection Head

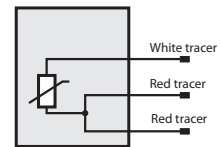
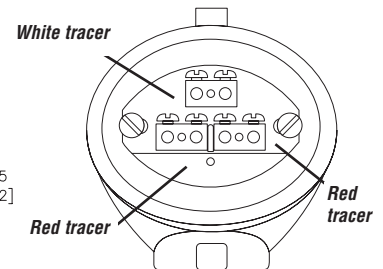
Dimensions

inches [mm]

RTD1-CXX-01

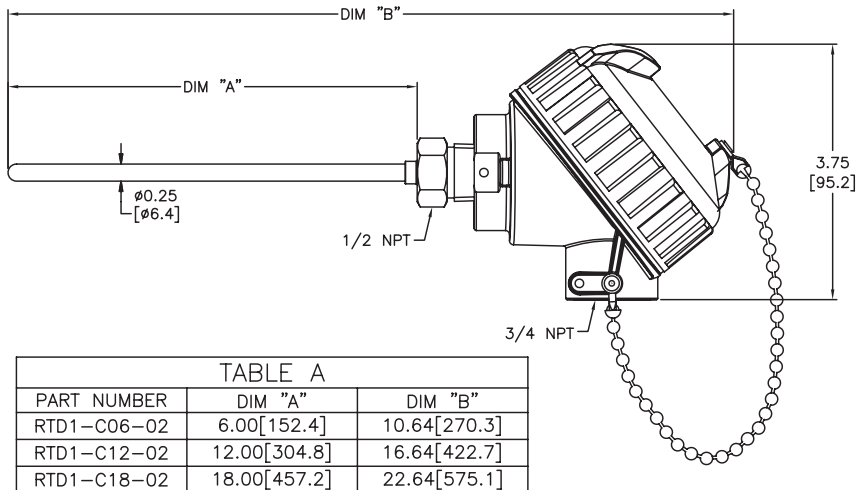


Wiring Information



- Ignore polarity marks on terminal base
- Recommended screw terminal tightening torque 3-4 lb-in

RTD1-CXX-02



Accessories

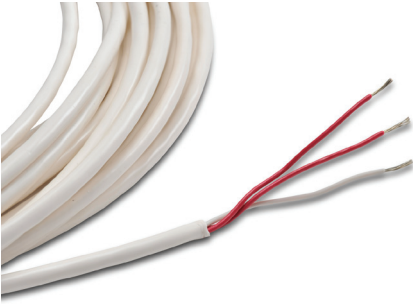
Part No.	Description	Pcs/Pkg	Price
BCF14-125N	Compression fitting, brass, for 1/4 inch diameter temperature probes, 1/8 inch NPT male thread	1	\$2.50
BCF14-25N	Compression fitting, brass, for 1/4 inch diameter temperature probes, 1/4 inch NPT male thread	1	\$3.00
BCF14-50N	Compression fitting, brass, for 1/4 inch diameter temperature probes, 1/2 inch NPT male thread	1	\$4.50
CF14-125N	Compression fitting, 316 stainless steel, for 1/4 inch diameter temperature probes, 1/8 inch NPT male thread	1	\$6.25
CF14-25N	Compression fitting, 316 stainless steel, for 1/4 inch diameter temperature probes, 1/4 inch NPT male thread	1	\$7.25
CF14-50N	Compression fitting, 316 stainless steel, for 1/4 inch diameter temperature probes, 1/2 inch NPT male thread	1	\$10.75
CFTF-14	Teflon ferrule for brass or stainless steel compression fittings and 1/4 inch diameter temperature probes	5	\$6.50

Note: RTD extension lead wire available at the end of this section.

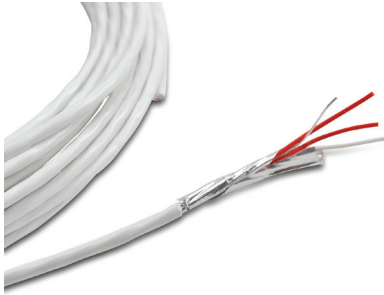
See end of section for full listing of accessories and dimension information.

prosense® RTD Extension Wire

RTDW-XX-01



RTDW-XX-02



Overview

- Specialized construction for use as RTD extension wire offers superior performance compared to “off-the-shelf” cable
- Available insulation types include PVC and FEP Teflon with aluminum Mylar shield and copper drain wire
- Convenient 50, 100 and 200 foot lengths



RTD Extension Wire

Part Number	Wt (lb)	Price	Type	Length (ft)/Pkg	Gauge, AWG	Conductors	Insulation Type / Color			Ohms/Triple Foot@68°F (20°C)	Continuous Temperature Rating	Nominal Size (inches)
							Each Conductor	Inner Jacket	Outer Jacket			
RTDW-50-01	0.9	\$22.00	RTD	50	22	3, stranded tinned copper	PVC, 2 red, 1 white	None	PVC, white	0.044	-20°F to 221°F (-29°C to 105°C)	0.160 O.D.
RTDW-100-01	1.5	\$43.00		100								
RTDW-200-01	3.0	\$86.00		200								
RTDW-50-02	0.9	\$57.00		50	24	3, twisted, stranded tinned copper	FEP Teflon, 2 red, 1 white	Aluminum Mylar shield and copper drain wire	FEP Teflon, white	0.066	-328°F to 400°F (-200°C to 204°C)	0.150 O.D.
RTDW-100-02	1.5	\$113.00		100								
RTDW-200-02	3.0	\$228.00		200								



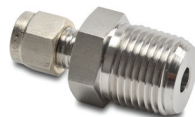
NOTE: MAXIMUM RECOMMENDED DISTANCE BETWEEN RTD AND CONTROL DEVICE IS 300 FEET.

prosense® Compression Mounting Fittings for Temperature Probes

Compression Mounting Fittings for Temperature Probes				
Part Number	Description	Pcs/ Pkg	Wt(lb)	Price
BCF18-125N	Compression fitting, brass, for 1/8 inch diameter temperature probes, 1/8 inch NPT male thread	1	0.5	\$2.50
BCF14-125N	Compression fitting, brass, for 1/4 inch diameter temperature probes, 1/8 inch NPT male thread	1	0.5	\$2.50
BCF18-25N	Compression fitting, brass, for 1/8 inch diameter temperature probes, 1/4 inch NPT male thread	1	0.5	\$3.00
BCF14-25N	Compression fitting, brass, for 1/4 inch diameter temperature probes, 1/4 inch NPT male thread	1	0.5	\$3.00
BCF18-50N	Compression fitting, brass, for 1/8 inch diameter temperature probes, 1/2 inch NPT male thread	1	0.5	\$4.50
BCF14-50N	Compression fitting, brass, for 1/4 inch diameter temperature probes, 1/2 inch NPT male thread	1	0.5	\$3.00
CF18-125N	Compression fitting, 316 stainless steel, for 1/8 inch diameter temperature probes, 1/8 inch NPT male thread	1	0.5	\$6.25
CF14-125N	Compression fitting, 316 stainless steel, for 1/4 inch diameter temperature probes, 1/8 inch NPT male thread	1	0.5	\$6.25
CF18-25N	Compression fitting, 316 stainless steel, for 1/8 inch diameter temperature probes, 1/4 inch NPT male thread	1	0.5	\$7.25
CF14-25N	Compression fitting, 316 stainless steel, for 1/4 inch diameter temperature probes, 1/4 inch NPT male thread	1	0.5	\$7.25
CF18-50N	Compression fitting, 316 stainless steel, for 1/8 inch diameter temperature probes, 1/2 inch NPT male thread	1	0.5	\$10.75
CF14-50N	Compression fitting, 316 stainless steel, for 1/4 inch diameter temperature probes, 1/2 inch NPT male thread	1	0.5	\$10.75
CFTF-18	Teflon™ ferrule for brass or stainless steel compression fittings and 1/8 diameter temperature probes	5	0.5	\$6.00
CFTF-14	Teflon ferrule for brass or stainless steel compression fittings and 1/4 diameter temperature probes	5	0.5	\$6.50
CF06-25N	1/4 NPT stainless steel compression fitting for 0.24 inch (6 mm) diameter RTD probe with M12 connector.	1	0.18	\$24.00
CF10-50N	1/2 NPT stainless steel compression fitting for 10 mm (0.4 inch) diameter RTD probe with M12 connector.	1	0.20	\$25.00
CF18-BC	Bayonet compression fitting, for 1/8" diameter probe sheath sensors	1	0.1	\$8.00
BB125N-50N	Reducing bushing, brass, 1/2 MNPT x 1/8 FNPT, hex head	1	0.1	\$4.25

NOTE: CHECK THE CHEMICAL COMPATIBILITY OF THE SENSOR'S WETTED PARTS WITH THE MEDIUM TO BE MEASURED.

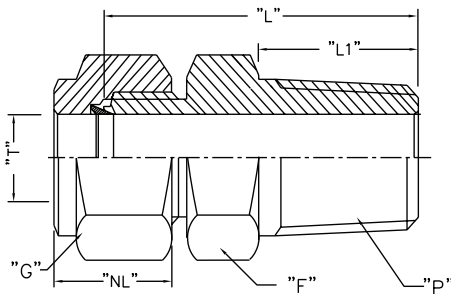
***Working pressure of compression fitting should not exceed 500 psi. However we recommend any pressure application use a thermowell**

BCF18-125N**BCF18-25N****BCF18-50N****BB125N-50N****CFTF-14****CFTF-18****CF14-125N****CF14-50N****CF14-25N****CF18-BC****CF06-25N****CF10-50N**

pro^{sense}® Compression Mounting Fittings for Temperature Probes

BCF14-125N**BCF14-25N****BCF14-50N****CF18-25N****CF18-50N****CF18-125N**

Dimensions



Note: All threaded connections should be hand tightened and then turned 1 to 2 full turns for proper sealing.

Actual torque required for a proper seal of NPT threads is influenced by tolerance, sealant, lubricant, etc.

ProSense Compression Fittings									
Part No.	Weight (lb)	Description	"T" Tube O.D.	"P" NPT(M)	"L" Body Length*	"L1" Thread Length**	"F" Body Hex**	"G" Nut Hex**	"NL" Nut Length**
BCF18-125N/CF18-125N	0.5	1/8" OD x 1/8" NPT(M)	0.128/0.132	1/8" NPT(M)	0.909"	0.393"	0.5"	0.433"	0.492"
BCF14-125N/CF14-125N	0.5	1/4" OD x 1/8" NPT(M)	0.253/0.257	1/8" NPT(M)	1.0"	0.393"	0.5"	0.559"	0.5"
BCF18-25N/CF18-25N	0.5	1/8" OD x 1/4" NPT(M)	0.128/0.132	1/4" NPT(M)	1.114"	0.551"	0.551"	0.433"	0.492"
BCF14-25N/CF14-25N	0.5	1/4" OD x 1/4" NPT(M)	0.253/0.257	1/4" NPT(M)	1.188"	0.551"	0.551"	0.559"	0.5"
BCF18-50N/CF18-50N	0.5	1/8" OD x 1/2" NPT(M)	0.128/0.132	1/2" NPT(M)	1.377"	0.748"	0.866"	0.433"	0.492"
BCF14-50N/CF14-50N	0.5	1/4" OD x 1/2" NPT(M)	0.253/0.257	1/2" NPT(M)	1.437"	0.748"	0.866"	0.559"	0.5"
CF06-25N	0.18	6 mm OD x 1/4" NPT(M)	0.236/0.240	1/4" NPT(M)	1.174"	0.59"	0.67"	0.55"	0.587"
CF10-50N	0.20	10 mm OD x 1/2" NPT(M)	0.394/0.399	1/2" NPT(M)	1.458"	0.55"	1.06"	0.75"	0.608"

Note: All dimensions are in inches

** ± 0.07*

*** ± 0.03*

Note: Once the compression fitting has been fully tightened on the probe, the ferrule will be locked onto the probe and cannot be removed or reused.

**Working pressure of compression fitting should not exceed 500 psi. However we recommend any pressure application use a thermowell*

prosense® Bayonet Mounting Adapter for Temperature Sensors

Bayonet Mounting Adapter for Temperature Sensors				
Part Number	Description	Pcs/ Pkg	Wt(lb)	Price
BA-078	Bayonet adapter, 7/8 inch long, 7/16 inch outside diameter, 9/32 inch inside diameter, 1/8 inch MNPT	1	0.5	\$1.25
BA-100	Bayonet adapter, 1 inch long, 7/16 inch outside diameter, 9/32 inch inside diameter, 1/8 inch MNPT	1	0.5	\$1.25
BA-114	Bayonet adapter, 1-1/4 inch long, 7/16 inch outside diameter, 9/32 inch inside diameter, 1/8 inch MNPT	1	0.5	\$1.50
BA-112	Bayonet adapter, 1-1/2 inch long, 7/16 inch outside diameter, 9/32 inch inside diameter, 1/8 inch MNPT	1	0.5	\$1.75
BA-200	Bayonet adapter, 2 inch long, 7/16 inch outside diameter, 9/32 inch inside diameter, 1/8 inch MNPT	1	0.5	\$2.00
BA-212	Bayonet adapter, 2-1/2 inch long, 7/16 inch outside diameter, 9/32 inch inside diameter, 1/8 inch MNPT	1	0.5	\$2.25
BA-300	Bayonet adapter, 3 inch long, 7/16 inch outside diameter, 9/32 inch inside diameter, 1/8 inch MNPT	1	0.5	\$2.50
BA-312	Bayonet adapter, 3-1/2 inch long, 7/16 inch outside diameter, 9/32 inch inside diameter, 1/8 inch MNPT	1	0.5	\$2.75
CF18-BC	Adjustable bayonet compression fitting, for 1/8" diameter probe sheath sensors	1	0.1	\$8.00
BB125N-50N	Reducing bushing, brass, 1/2 MNPT x 1/8 FNPT, hex head	1	0.1	\$4.25



NOTE: CHECK THE CHEMICAL COMPATIBILITY OF THE SENSOR'S WETTED PARTS WITH THE MEDIUM TO BE MEASURED.

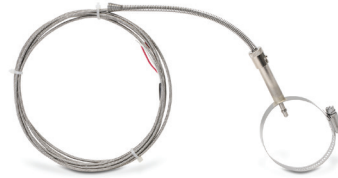
BA-078**BA-100****BA-114****CF18-BC****BA-300****BA-112****BB125N-50N****BA-312****BA-200****BA-212**

proSense® Pipe Clamp Adapters

**PCA-300**

Overview

- For use with ProSense adjustable immersion thermo-couple and RTD sensors
- Available in adjustable diameters from 1-1/16 to 7 inches
- Provides an easy means of sensing temperature on the outside of a pipe

*Shown with optional adjustable immersion sensor*

Pipe Clamp Adapters for ProSense Adjustable Immersion Sensors				
Part Number	Description	Pcs/ Pkg	Wt(lb)	Price
PCA-125	ProSense pipe clamp adapter, 1-1/16 to 1-1/4 inch adjustable diameter, 2-inch attached bayonet adapter with 7/16 inch outside diameter and 9/32 inch inside diameter. Use with Prosense adjustable immersion sensors.	1	0.1	\$14.00
PCA-200	ProSense pipe clamp adapter with 1-1/16 to 2 inch adjustable diameter, 2-inch attached bayonet adapter with 7/16 inch outside diameter and 9/32 inch inside diameter. Use with Prosense adjustable immersion sensors.	1	0.1	\$12.00
PCA-300	ProSense pipe clamp adapter with 2-1/16 to 3 inch adjustable diameter, 2-inch attached bayonet adapter with 7/16 inch outside diameter and 9/32 inch inside diameter. Use with Prosense adjustable immersion sensors.	1	0.1	\$16.00
PCA-425	ProSense pipe clamp adapter with 3-5/16 to 4-1/4 inch adjustable diameter, 2-inch attached bayonet adapter with 7/16 inch outside diameter and 9/32 inch inside diameter. Use with Prosense adjustable immersion sensors.	1	0.1	\$17.00
PCA-500	ProSense pipe clamp adapter with 4-1/8 to 7 inch adjustable diameter, 2-inch attached bayonet adapter with 7/16 inch outside diameter and 9/32 inch inside diameter. Use with Prosense adjustable immersion sensors.	1	0.1	\$17.00

Dimensions

inches [mm]

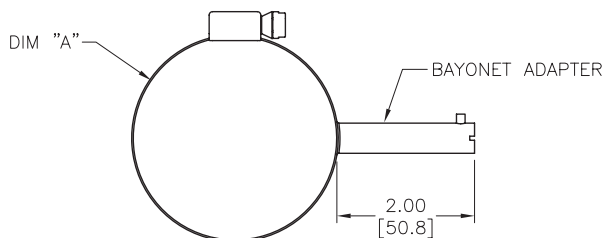


TABLE A		
PART NUMBER	DIM "A"	FITS PIPE SIZES
PCA-125	ø0.68–1.25 [ø17.2–31.7]	1/2 TO 3/4 NPS
PCA-200	ø1.06–2.00 [ø26.9–50.8]	1 TO 1-1/2 NPS
PCA-300	ø2.06–3.00 [ø52.3–76.2]	2 TO 2-1/2 NPS
PCA-425	ø3.31–4.25 [ø84.1–108.0]	3 TO 3-1/2 NPS
PCA-500	ø4.12–7.00 [ø104.6–177.8]	4 TO 6 NPS

prosense® Thermocouple and RTD Connectors

Overview

- Glass-filled high quality thermoplastic body with original thermocouple material pins and spring-loaded inserts
- Polarized pins
- Molded barriers prevent short circuit
- Captive central cover screw for easy assembly
- Easy wire connection pressure plate construction
- Stainless steel screws with combination head (Slotted and Phillips)
- 3-pin standard connectors have a third pin for ground or continuous shield, or for 3-wire RTDs



Thermocouple and RTD Connectors									
Part Number	Pcs/ Pkg	Wt(lb)	Price	Sensor Type	Connector Type	Temperature Rating	Body Color	Wire Size	Wire Cable Clamp Bracket
THMJ-SP	1	0.5	\$3.25	J	Standard round pin plug	Max continuous 400°F (200°C)	Black	32 AWG (0.2 mm) to 14 AWG maximum (2.0 mm)	WCB-S
THMJ-SJ	1	0.5	\$4.25		Standard round pin jack				—
THMJ-SPJ	1	0.5	\$7.75		Standard round direct mount jack				—
THMJ-MP	1	0.5	\$3.00		Miniature flat pin plug			40 AWG (0.08 mm) to 20 AWG maximum (0.8 mm)	WCB-M
THMJ-MJ	1	0.5	\$3.50		Miniature flat pin jack				—
THMJ-MPJ	1	0.5	\$5.00		Miniature round direct mount jack				—
THMK-SP	1	0.5	\$3.75	K	Standard round pin plug	Max continuous 400°F (200°C)	Yellow	32 AWG (0.2 mm) to 14 AWG maximum (2.0 mm)	WCB-S
THMK-SJ	1	0.5	\$4.50		Standard round pin jack				—
THMK-SPJ	1	0.5	\$7.50		Standard round direct mount jack				—
THMK-MP	1	0.5	\$3.25		Miniature flat pin plug			40 AWG (0.08 mm) to 20 AWG maximum (0.8 mm)	WCB-M
THMK-MJ	1	0.5	\$3.50		Miniature flat pin jack				—
THMK-MPJ	1	0.5	\$5.50		Miniature round direct mount jack				—
THMK-HSP	1	0.5	\$8.50	T	Standard hi-temp round pin plug	Max continuous 662°F (350°C)	Brown	32 AWG (0.2 mm) to 14 AWG maximum (2.0 mm)	WCB-S
THMK-HSJ	1	0.5	\$10.00		Standard hi-temp round pin jack				—
THMT-SP	1	0.5	\$3.50		Standard round pin plug			40 AWG (0.08 mm) to 20 AWG maximum (0.8 mm)	WCB-M
THMT-SJ	1	0.5	\$4.75		Standard round pin jack				—
THMT-SPJ	1	0.5	\$7.50		Standard round direct mount jack				—
THMT-MP	1	0.5	\$3.25		Miniature flat pin plug				—
THMT-MJ	1	0.5	\$3.75	RTD	Miniature flat pin jack	Max continuous 400°F (200°C)	Blue	32 AWG (0.2 mm) to 14 AWG maximum (2.0 mm)	WCB-S
THMT-MPJ	1	0.5	\$5.75		Miniature round direct mount jack				—
RTD-SP	1	0.5	\$6.50	RTD	Standard round pin plug	Max continuous 400°F (200°C)	White	32 AWG (0.2 mm) to 14 AWG maximum (2.0 mm)	WCB-S
RTD-SJ	1	0.5	\$8.50		Standard round pin jack				—

THMT-SP



THMT-SJ



THMK-SP



THMK-SJ



THMJ-MP



THMJ-MJ



THMT-SPJ



THMT-MPJ



RTD-SP



RTD-SJ



THMK-HSP



THMK-HSJ

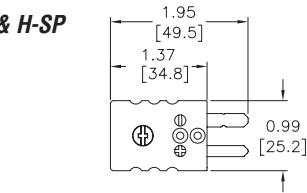


prosense® Thermocouple and RTD Connectors

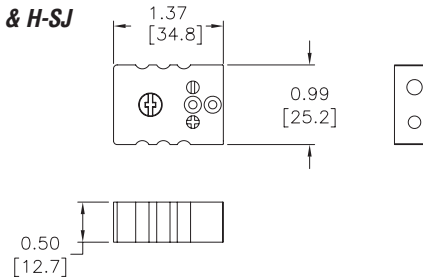
Dimensions

inches [mm]

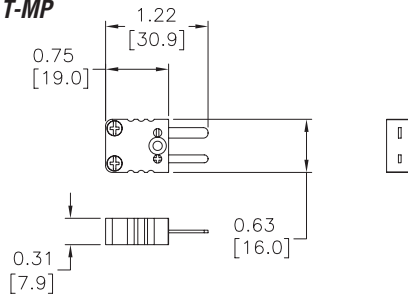
THMJ, K, T, & H-SP



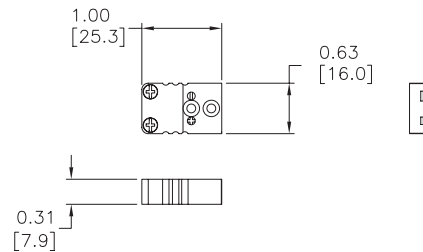
THMJ, K, T, & H-SJ



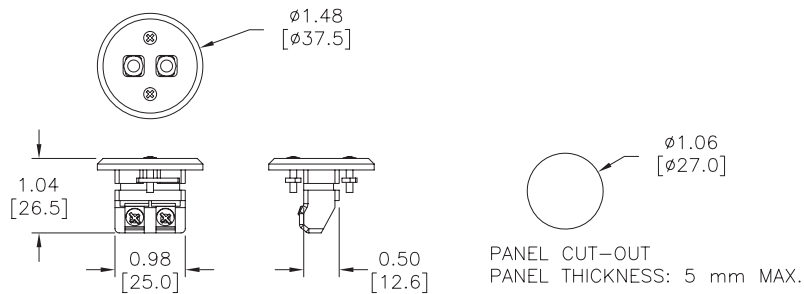
THMJ, K, & T-MP



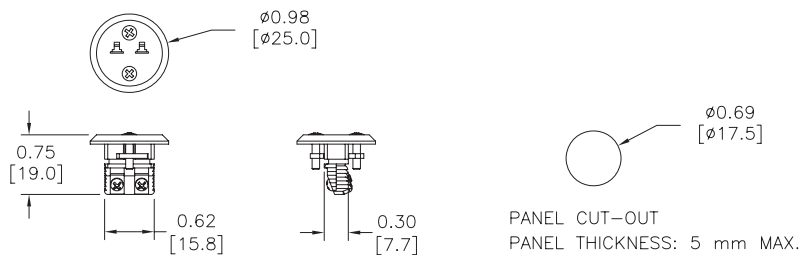
THMJ, K, & T-MJ



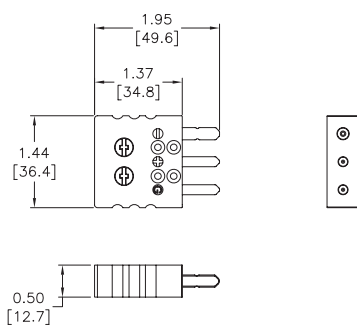
THMJ, K, & T-SPJ



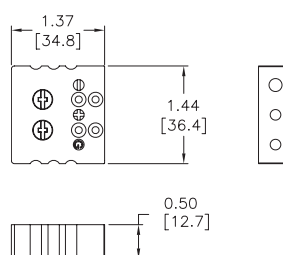
THMJ, K, & T-MPJ



RTD-SP



RTD-SJ



prosense® Thermocouple and RTD Connectors

WCB-S



WCB-S Application



WCB-M



WCB-M Application

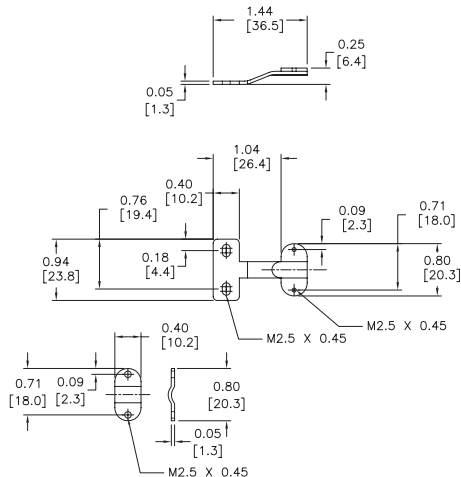


Thermocouple and RTD Connectors Accessories				
Part Number	Pcs/ Pkg	Wt(lb)	Price	Description
WCB-S	4	0.5	\$5.00	Wire / cable clamp bracket for use with standard thermocouple and RTD connectors.
WCB-M	4	0.5	\$5.00	Wire / cable clamp bracket for use with miniature thermocouple connectors.

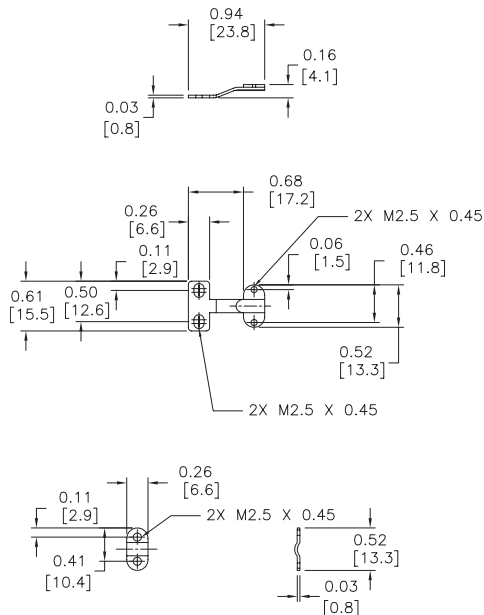
Dimensions

inches [mm]

WCB-S



WCB-M



prosense® Thermocouple and RTD Temperature Range

Thermocouple Temperature Range	
THMK-C06-04	32 to 2100°F (0 to 1149°C)
THMK-C12-04	
THMK-C18-04	
THMK-H06L01-03	
THMK-H12L01-03	
THMK-H18L01-03	32 to 2100°F (0 to 1149°C) lead wire transition rated to 204°C (400°F)
THMK-T06L06-03	
THMK-T12L06-03	
THMK-T18L06-03	
TTD25C-20-0300F-H	0 to 300°F (-17.8 to 148.9°C)
TTD25N-20-0300F-H	
THMJ-A01L04-01	32 to 900°F (0 to 482°C)
THMJ-A01L06-01	
THMJ-A01L10-01	
THMJ-A01L10-02	
THMJ-B01L06-01	
THMJ-B01L06-02	
THMJ-B02L06-01	
THMJ-B02L06-02	
THMJ-D08L04-01	
THMJ-D08L06-01	
THMJ-D08L10-01	
THMJ-D08L10-02	
THMK-A01L04-01	
THMK-A01L06-01	
THMK-A01L10-01	
THMK-A01L10-02	
THMK-B01L06-01	
THMK-B01L06-02	
THMK-D08L04-01	
THMK-D08L06-01	
THMK-D08L10-01	
THMK-D08L10-02	
THMJ-T06L06-01	32 to 970°F (0 to 521°C), lead wire transition rated to 400 °F (204 °C)
THMJ-T12L06-01	
THMJ-T18L06-01	
THMJ-P06-01	32 to 970°F (0 to 521°C), plug rated to 400 °F (204 °C)
THMJ-P12-01	
THMJ-P18-01	
THMJ-C04-03	32 to 1330°F (0 to 720°C)
THMJ-C04R-03	
THMJ-C06-01	
THMJ-C06-02	
THMJ-C06-03	
THMJ-C06R-03	
THMJ-C12-01	
THMJ-C12-02	
THMJ-C12-03	
THMJ-C12R-03	
THMJ-C18-01	
THMJ-C18-02	
THMJ-H04L01-02	
THMJ-H06L01-01	
THMJ-H06L01-02	
THMJ-H12L01-01	
THMJ-H12L01-02	
THMK-H18L01-01	
THMK-T06L06-01	
THMK-T06L06-02	
THMK-T12L06-01	
THMK-T12L06-02	
THMK-T18L06-01	
THMK-T18L06-02	
THMK-P06-01	32 to 1700°F (0 to 927°C), plug rated to 400 °F (204 °C)
THMK-P06-02	
THMK-P12-01	
THMK-P12-02	32 to 1700°F (0 to 927°C), plug rated to 400 °F (204 °C)
THMK-P18-01	
THMK-P18-02	
THMK-B02L06-01	32° to 900°F (0° to 482°C)
THMK-B02L06-02	
THMT-P06-01	-328 to 700°F (-200 to 371°C) plug rated to 400 °F (204 °C)
THMT-P12-01	
THMT-P18-01	-328 to 700°F (-200 to 371°C), lead wire transition rated to 400 °F (204 °C)
THMT-T06L06-01	
THMT-T12L06-01	32 to 212°F (0 to 100°C)
THMT-T18L06-01	
TTD25C-20-0100C-H	32 to 212°F (0 to 100°C)
TTD25N-20-0100C-H	
TSD25N-0P-0284-H	-4 to 284°F (-20 to 140°C)
TSD25N-AP-0284-H	

Thermocouple Temperature Range	
THMJ-T06L06-02	32 to 1330°F (0 to 720°C) lead wire transition rated to 400 °F (204 °C)
THMJ-T12L06-02	
THMJ-T18L06-02	
THMJ-P06-02	32 to 1330°F (0 to 720°C) plug rated to 400 °F (204 °C)
THMJ-P12-02	
THMJ-P18-02	
THMK-C04-03	32 to 1700°F (0 to 927°C)
THMK-C04R-03	
THMK-C06-01	
THMK-C06-02	
THMK-C06-03	
THMK-C06R-03	
THMK-C12-01	
THMK-C12-02	
THMK-C12-03	
THMK-C12R-03	
THMK-C18-01	
THMK-C18-02	
THMK-H04L01-02	
THMK-H06L01-01	
THMK-H06L01-02	
THMK-H12L01-01	
THMK-H12L01-02	
THMK-H18L01-01	
THMK-T06L06-01	
THMK-T06L06-02	
THMK-T12L06-01	
THMK-T12L06-02	
THMK-T18L06-01	
THMK-T18L06-02	
THMK-P06-01	32 to 1700°F (0 to 927°C) plug rated to 400 °F (204 °C)
THMK-P06-02	
THMK-P12-01	
THMK-P12-02	32 to 1700°F (0 to 927°C) plug rated to 400 °F (204 °C)
THMK-P18-01	
THMK-P18-02	
THMK-B02L06-01	32° to 900°F (0° to 482°C)
THMK-B02L06-02	
THMT-P06-01	-328 to 700°F (-200 to 371°C) plug rated to 400 °F (204 °C)
THMT-P12-01	
THMT-P18-01	-328 to 700°F (-200 to 371°C), lead wire transition rated to 400 °F (204 °C)
THMT-T06L06-01	
THMT-T12L06-01	32 to 212°F (0 to 100°C)
THMT-T18L06-01	
TTD25C-20-0100C-H	32 to 212°F (0 to 100°C)
TTD25N-20-0100C-H	
TSD25N-0P-0284-H	-4 to 284°F (-20 to 140°C)
TSD25N-AP-0284-H	

RTD Temperature Range	
RTD1-R01-01	40 to 185°F (-40 to 85°C)
RTD1-S04-01	
RTD1-S04-02	
RTD1-S04-03	
RTD1-S04-04	
RTD1-B01L06-01	
RTD1-B02L06-01	
RTD1-C04-03	
RTD1-C04R-03	
RTD1-C06-01	
RTD1-C06-03	-58 to 572°F (-50 to 300°C)
RTD1-C06R-03	
RTD1-C12-01	
RTD1-C12-02	
RTD1-C12-03	
RTD1-C12R-03	
RTD1-C18-01	
RTD1-C18-02	
RTD1-H04L01-02	
RTD1-H06L01-01	
RTD1-H06L01-02	-58 to 572°F (-50 to 300°C) Plug rated to 400°F (204°C)
RTD1-H12L01-01	
RTD1-H12L01-02	
RTD1-H18L01-01	-58 to 572°F (-50 to 300°C) lead wire transition rated to 400°F (204°C)
RTD1-P06-01	
RTD1-P12-01	
RTD1-P18-01	-58 to 572°F (-50 to 300°C) lead wire transition rated to 400°F (204°C)
RTD1-D08L10-01	
RTD1-T06L06-01	
RTD1-T12L06-01	
RTD1-T18L06-01	

J, K, & T Thermocouple Color Code

J	White	+
	Red	-
K	Yellow	+
	Red	-
T	Blue	+
	Red	-