

# PS Series Fork Sensors

## Fork Sensor U-Frame - Food Applications



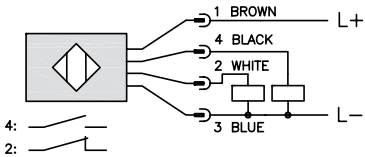
- Rugged metal one-piece housing - always in alignment
- Easy installation
- Stainless steel slot sensor
- Visible Red Light
- Food Applications
- Complementary Light / Dark operation
- Adjustable sensitivity
- High switching frequency
- M12 connector with cable



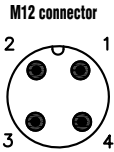
PS Series Fork Sensor U-frame Selection Chart - Food Applications							
Part Number	Price	Sensing Range	Output State	Logic	Connection	Wiring	Dimensions
<b>PSUFR-0P-5F</b>	\$263.00	50mm (1.18 in)	Complementary Light On/Dark On	PNP	M12 connector	Diagram 1	Figure 1
<b>PSUFR-0P-6F</b>	\$279.00	80mm (3.15 in)				Diagram 1	Figure 2

### Wiring diagrams

Diagram 1



### Connectors



# PS Series Fork Sensors

Specifications	
	<b>Food Applications</b>
<b>Mounting Type</b>	Slot
<b>Sensing Distance</b>	50mm (1.97 in) to 80mm (3.15 in)
<b>Smallest Detectable Object</b>	PSUFR 5F 0.8 mm (0.003 in) PSUFR 6F 1.0 mm (0.04 in)
<b>Emission</b>	Visible Red Light
<b>Output Type</b>	PNP/ Light on/Dark on/ 4-wire
<b>Operating Voltage</b>	10 to 30 VDC
<b>No-load Supply Current</b>	≤ 35 mA
<b>Operating (Load) Current</b>	200 mA
<b>Off-state (Leakage) Current</b>	N/A
<b>Voltage Drop</b>	≤ 3.0V (PNP)
<b>Switching Frequency</b>	3kHz
<b>Differential Travel</b>	N/A
<b>Repeat Accuracy</b>	0.25 mm (0.984 in)
<b>Ripple</b>	N/A
<b>Time Delay Before Availability (tv)</b>	N/A
<b>Reverse Polarity Protection</b>	Yes
<b>Short-Circuit Protection</b>	Yes
<b>Operating Temperature</b>	-10°C to +60°C (14°F to +140°F)
<b>Protection Degree (DIN 40050)</b>	IP67/IP69k
<b>Indication/Switch Status</b>	On Yellow LED
<b>Housing Material</b>	316 L Stainless Steel
<b>Sensing Face Material</b>	PMMA
<b>Shock</b>	Meets IEC 68-2-27 (See Photoelectric Sensor Terminology at the end of this section for more details)
<b>Vibration</b>	Meets IEC 68-2-6 (See Photoelectric Sensor Terminology at the end of this section for more details)
<b>Tightening Torque</b>	N/A
<b>Weight</b>	PSUFx5F 285g (10.05 oz) PSUFx6F 340g (11.99 oz)
<b>Connection</b>	0.25m PUR cable with 4-pin M12 quick-disconnect
<b>Agency Approvals</b>	CE
Note: To obtain the most current agency approval information— see the Agency Approval Checklist section on the specific part number's web page.	

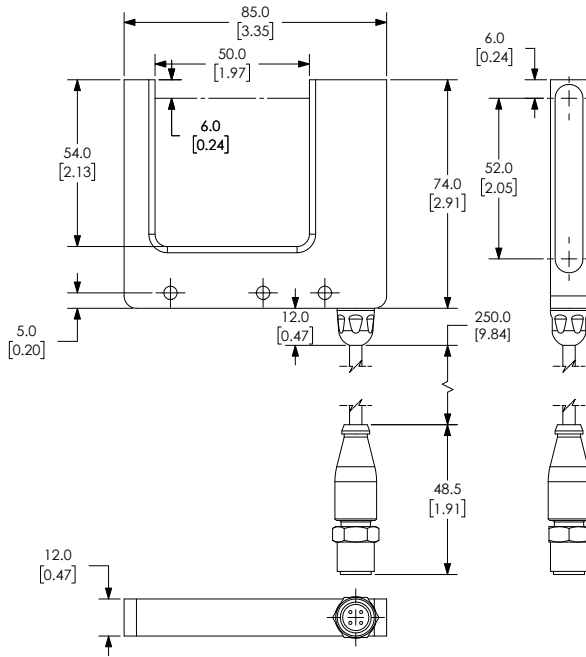
# PS Series Fork Sensors

## Dimensions

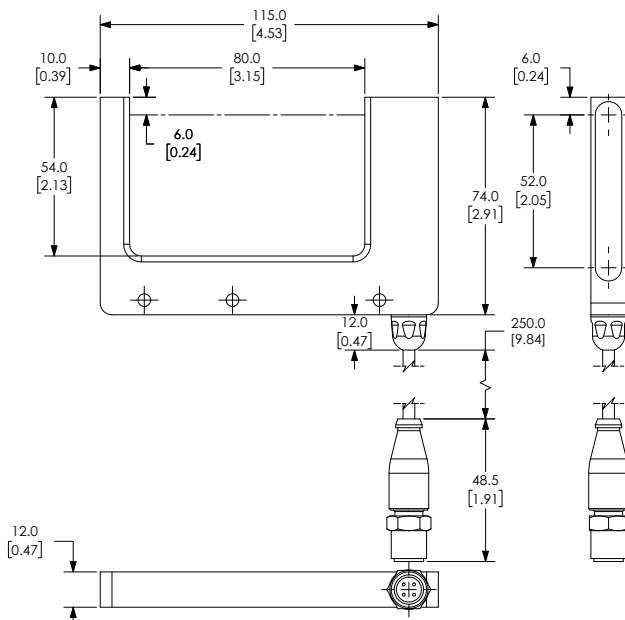
mm

[inch]

**Figure 1**



**Figure 2**



SEE OUR WEBSITE: [WWW.AUTOMATIONDIRECT.COM](http://WWW.AUTOMATIONDIRECT.COM) FOR COMPLETE ENGINEERING DRAWINGS.