

WST Series Weld-Field Immune Inductive Proximity Sensors

M30 (30mm)



- Three models available
- Low cost/high performance
- Weld slag resistant coating
- Inductive sensor
- Full metal housing
- Increased sensing range
- Gold-plated contacts
- Flush mounting
- Lifetime warranty



WST Series M30 Inductive Prox Selection Chart									
Part Number	Price	Sensing Range	Mounting	Output State	Logic	Voltage	Connection	Wiring	Dimensions
WST-AP-3H	\$40.50	15mm (0.59 mm)	Flush	N.O.	PNP	10 - 30 VDC	4-pin M12 quick-disconnect	Diagram 1	Figure 1
WST-A0-3E	\$56.00	12mm (0.47 mm)					PNP/NPN	4-pin M12 with 0.3 m cable	Diagram 2
WST-A0-3A	\$56.00				3m axial cable	Diagram 3			

Wiring Diagrams

Diagram 1

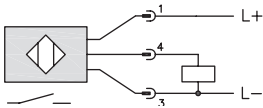


Diagram 2

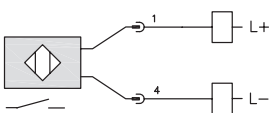
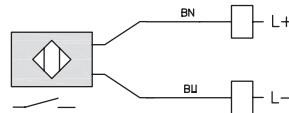


Diagram 3



Connectors

4-pin M12 NPN



4-pin M12 PNP



4-pin M12 0.3m



Dimensions

mm [inches]

Figure 1

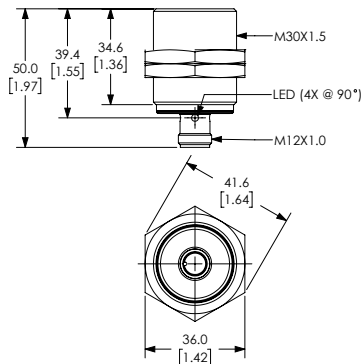


Figure 2

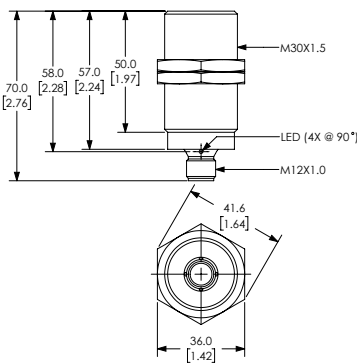
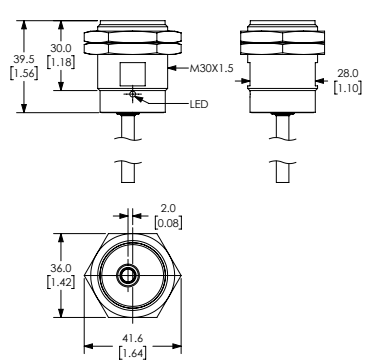


Figure 3



WST Series Weld-Field Immune Inductive Proximity Sensors

Specifications	M30		
Models	WST-AP-3H	WST-A0-3E	WST-A0-3A
Mounting Type	Flush		
Nominal Sensing Distance (mm)	15mm (0.59 in)	12mm (0.47 in)	
Operating Distance	0 - 12.15 mm		
Material Correction Factors	See the Material Influence table		
Output Type	N.O.		
Operating Voltage	10 to 30 VDC	10 to 36 VDC	
No-load Supply Current	< 10 mA	NA	
Operating (Load) Current	< 100 mA		
Off-state Leakage Current	NA	< 0.6 mA	
Voltage Drop	< 2.5 V		
Switching Frequency	2Hz	25Hz	
Differential Travel (% of Nominal Distance)	3 - 15	1- 20	
Repeat Accuracy	NA		
Ripple	NA		
Time Delay Before Availability (tv)	NA		
Short Circuit Protection	Yes		
Operating Temperature	-40 to 85°C [-40 to 185°F]	-25 to 70°C [-13 to 158°F]	
Protection Degree (DIN 40 050)	IP65 / IP66 / IP67 / IP68 / IP69K	IP67	
LED Indicators	Illuminated when energized		
Housing Material	Stainless steel 316L / 1.4404 with anti-spatter ceramic (Polytetrafluoroethylene [PTFE]) coating		
Sensing Face Material	active face: stainless steel 316L 1.4404 anti-spatter		
Shock/Vibration	See Proximity Sensor Terminology		
Weight	0.115 kg	0.135 kg	0.227 kg
Connection	4-pin M12 quick-disconnect	PUR cable / 0.3 m; 2 x 0.5 mm ² ; with 4-pin M12 quick-disconnect	PUR cable / 3 m; 2 x 0.5 mm ²
Agency Approvals	cULus E328811, CE		