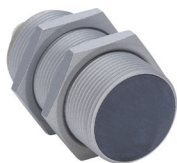
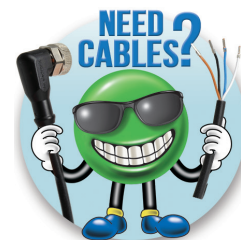


WKT Series Factor 1 Weld-Field Immune Inductive Proximity Sensors

M30 (30mm)



- Correction Factor (K-Factor) = 1
- Low cost/high performance
- Weld slag resistant coating
- Inductive sensor
- Metal thread M12 x 1 Connector
- Increased sensing range
- Gold-plated contacts
- Electromagnetic field immune
- Flush mounting
- Lifetime warranty

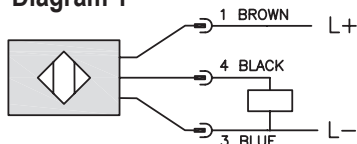


WKT Series M30 Inductive Proximity Selection Chart

Part Number	Price	Sensing Range	Mounting	Output State	Logic	Voltage	Connection	Wiring	Dimensions
WKT-AP-3H	\$45.00	15 mm [0.59 mm]	Flush	N.O.	PNP	10 - 30 VDC	4-pin M12 quick-disconnect	Diagram 1	Figure 1

Wiring Diagrams

Diagram 1



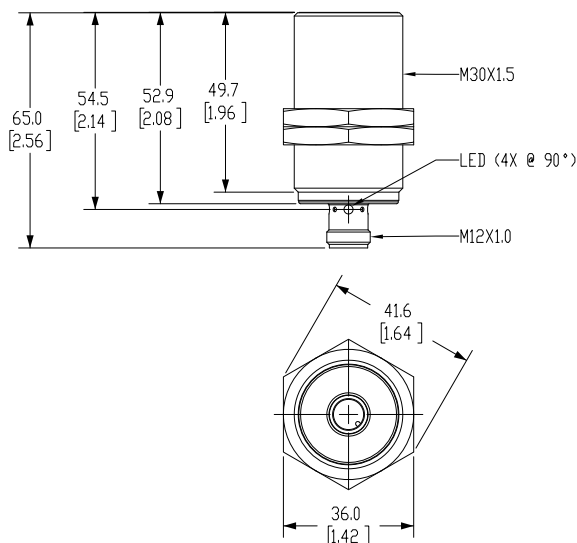
Connector



Dimensions

mm [inches]

Figure 1



WKT Series Factor 1 Weld-Field Immune Inductive Proximity Sensors

WKT Series M30 Inductive Proximity Specifications	
Model	<u>WKT-AP-3H</u>
Mounting Type	Flush
Nominal Sensing Distance	15mm [0.59 in]
Operating Distance	0-12.15 mm [0-0.49 in]
Material Correction Factors	Correction Factor (K-Factor) = 1
Output Type	N.O.
Operating Voltage	10 to 30 VDC
No-load Supply Current	< 20mA
Operating (Load) Current	100mA
Off-state Leakage Current	NA
Voltage Drop	< 2.5 V
Switching Frequency	2000Hz
Differential Travel (% of Nominal Distance)	3 - 15
Repeat Accuracy	NA
Ripple	NA
Time Delay Before Availability (tv)	NA
Short Circuit Protection	Yes
Operating Temperature	-40 to 85 °C [-40 to 185 °F]
Protection Degree (DIN 40050)	IP65 / IP66 / IP67 / IP68 / IP69K
LED Indicators	Illuminated when energized
Housing Material	Brass with anti-spatter ceramic (Polytetrafluoroethylene [PTFE]) coating; LED window: Polyetherimide [PEI]
Sensing Face Material	active face: Liquid Crystal Polymer [LCP] black
Shock/Vibration	See Proximity Sensor Terminology
Weight	0.112 kg [0.247 lb]
Connection	4-pin M12 quick-disconnect
Agency Approvals	cULus E328811, CE

To obtain the most current agency approval information, see the Agency Approval Checklist section on the specific part number's web page.