

KST Series Factor 1 Inductive Proximity Sensors



M30 (30mm)

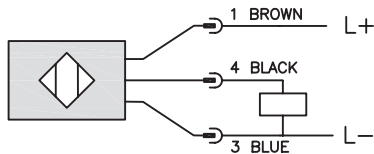


- Correction Factor (K-Factor) = 1
- 3 models available
- Low cost/high performance
- Inductive sensor
- Metal thread M12 x 1 Connector
- Increased sensing range
- Gold-plated contacts
- Electromagnetic field immune
- Shielded and unshielded mounting
- Lifetime warranty

KST Series M30 Inductive Prox Selection Chart									
Part Number	Price	Sensing Range	Housing	Output State	Logic	Voltage	Connection	Wiring	Dimensions
KST6-AP-3H	\$34.00	15mm (0.59 in)	Shielded	NO	PNP	10 - 30 VDC	4-pin M12 quick disconnect	Diagram 1	Figure 1
KST-AP-3H	\$34.00	15mm (0.59 in)	Shielded						Figure 2
KST-AP-4H	\$34.00	30mm (1.18 in)	Unshielded						

Wiring Diagrams

Diagram 1



Connector

4-pin M12 connector



Dimensions

mm [inches]

Figure 1

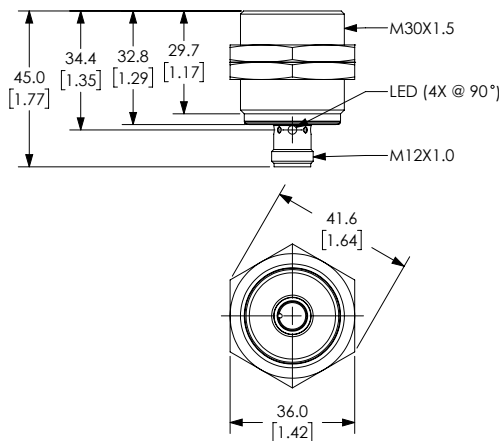
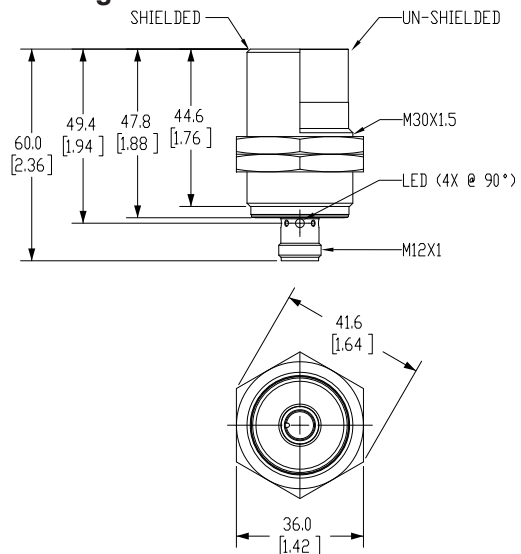


Figure 2



KST Series Factor 1 Inductive Proximity Sensors

Specifications	M30		
Models	KST6-AP-3H	KST-AP-3H	KST-AP-4H
Mounting Type	Shielded		Unshielded
Nominal Sensing Distance (mm)	15mm (0.59 in)		30mm (1.18 in)
Operating Distance	0 - 12.15 mm		0 - 24.30 mm
Material Correction Factors	Correction Factor (K-Factor) = 1		
Output Type	NO		
Operating Voltage	10 to 30 VDC		
No-load Supply Current	< 20 mA		
Operating (Load) Current	100 mA		
Off-state Leakage Current	NA		
Voltage Drop	< 2.5 V		
Switching Frequency	2000Hz		
Differential Travel (% of Nominal Distance)	3 - 15		
Repeat Accuracy	NA		
Ripple	NA		
Time Delay Before Availability (tv)	NA		
Short Circuit Protection	Yes		
Operating Temperature	-40 — 85 °C [-40 — 185 °F]		
Protection Degree (DIN 40 050)	IP65 / IP66 / IP67 / IP68 / IP69K		
LED Indicators	Illuminated when energized		
Housing Material	stainless steel (316L); LED window: Polyetherimide (PEI)		
Sensing Face Material	active face: Liquid Crystal Polymer (LCP) white		
Shock/Vibration	See Proximity Sensor Terminology .		
Weight	0.077 kg	0.093 kg	0.08 kg
Connection	4-pin M12 quick disconnect		
Agency Approvals	cULus E328811, CE		