

CT Series Capacitive Proximity Sensors

M30 (30mm) metal



- Potentiometer sensitivity adjustment
- NO or NC units
- IP65 rated
- LED status indicators
- 2m (6.56 ft) axial cable
- Mounting accessories available



CT Series Capacitive Prox Selection Chart

Part Number	Price	Sensing Distance	Housing	Output State	Logic	Connection	Wiring	Dimensions
Metal Housing								
CT1-AN-1A	\$75.00	15mm (0.59 in)	Shielded	NO	NPN	2m (6.56 ft) axial cable	Diagram 1	Figure 1
CT1-AP-1A	\$75.00	15mm (0.59 in)	Shielded	NO	PNP	2m (6.56 ft) axial cable	Diagram 2	Figure 1
CT1-AN-2A	\$75.00	20mm (0.79 in)	Unshielded	NO	NPN	2m (6.56 ft) axial cable	Diagram 1	Figure 1
CT1-AP-2A	\$75.00	20mm (0.79 in)	Unshielded	NO	PNP	2m (6.56 ft) axial cable	Diagram 2	Figure 1
CT1-CN-2A	\$75.00	20mm (0.79 in)	Unshielded	NC	NPN	2m (6.56 ft) axial cable	Diagram 1	Figure 1
CT1-CP-2A	\$75.00	20mm (0.79 in)	Unshielded	NC	PNP	2m (6.56 ft) axial cable	Diagram 2	Figure 1

CT Series Specifications	CT1-xx-1x	CT1-xx-2x
Mounting Type	Shielded	Unshielded
Nominal Sensing Distance	15mm (0.59 in)	20mm (0.79 in)
Sensitivity	20-turn potentiometer	
Operating Distance	NA	
Material Correction Factors		
Output Type	NPN/PNP; NO/NC	
Operating Voltage	10 to 30VDC	
No-load Supply Current	8mA	
Operating (Load) Current	≤200mA	
Off-state (Leakage) Current	≤10µA	
Voltage Drop	1.8 volts maximum	
Switching Frequency	100Hz	
Differential Travel (% of Nominal Distance)	2 to 20%	
Repeat Accuracy	10%	
Ripple	≤10%	
Time Delay Before Availability (tv)	100ms	
Reverse Polarity Protection	Yes	
Short-circuit Protection	Yes (switch auto-resets after overload is removed)	
Operating Temperature	-25° to +70°C (-13° to 158°F)	
Protection Degree (DIN 40050)	IEC IP65	
Indication/Switch Status	Green (supply, Red [NO output energized])	
Housing Material	Nickel-plated brass	
Sensing Face Material	Polybutylene Terephthalate (PBT)	
Shock/Vibration	DIN EN 60947-5-2	
Tightening Torque	50N•m (36.9 lb•ft)	
Weight	280g (19.88oz)	
Connectors	2m (6.56 ft) axial cable, 2 lock nuts included	
Agency Approvals	CE	

CT Series Capacitive Proximity Sensors

Wiring diagrams

Diagram 1

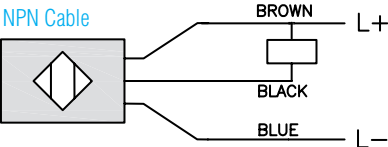
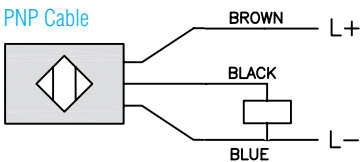


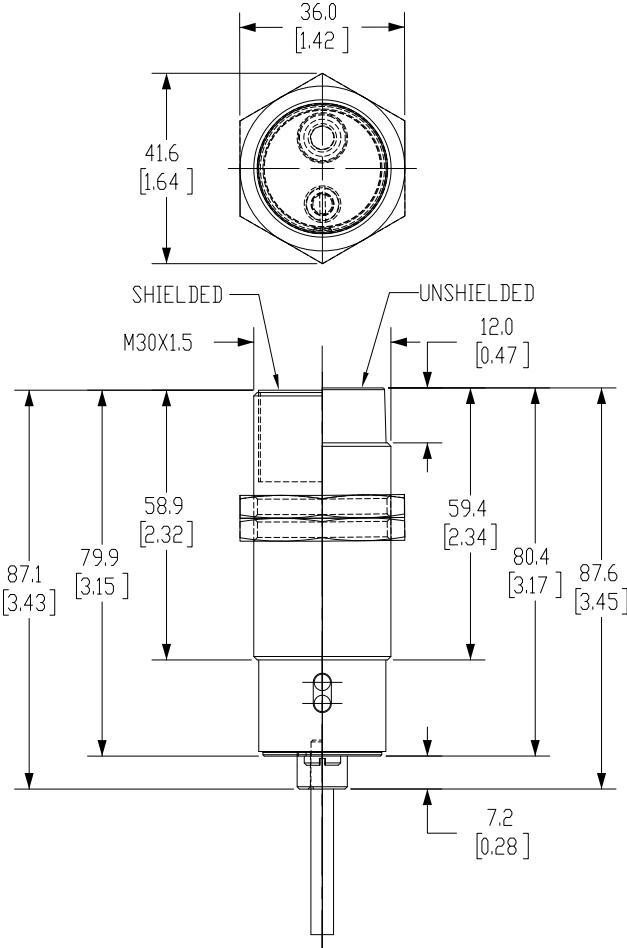
Diagram 2



Dimensions

mm [inches]

Figure 1



See our website: www.AutomationDirect.com for complete engineering drawings

Capacitive Proximity Sensors - Accessories



Mounting Well

Mounting Adapter

Capacitive Proximity Sensors Accessory Chart				
Part Number	Price	Description	Material	Dimensions
Mounting Adapter				
CR1-ADPTR	\$4.00	Adapter for CR1 series capacitive sensors	Housing: Polybutylene Terephthalate (PBT) Included Screws: M3 x 6 Steel (0.5 N•m [0.37 lb•ft])	Figure 1
Mounting Wells				
MWT-01	\$44.50	30mm (1.18 in) sensor mounting well	PTFE - Polytetrafluoroethylene (Teflon®) Temp: -25° to 246°C (-13° to 474.8°F) Max. pressure: 100 PSI (6.9 bar)	Figure 2
MWK-01	\$36.50	18mm (0.71 in) sensor mounting well		Figure 3

Dimensions

mm [inches]

Figure 1

CR1 Adapter

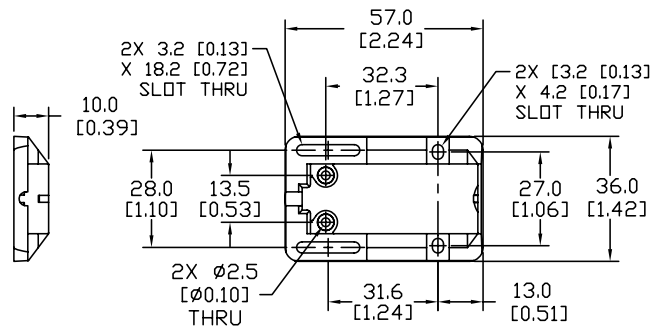


Figure 2

30mm Sensor Mounting Well

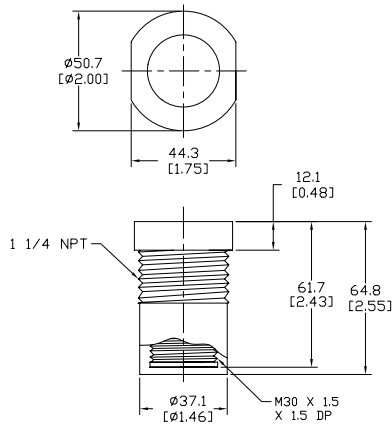
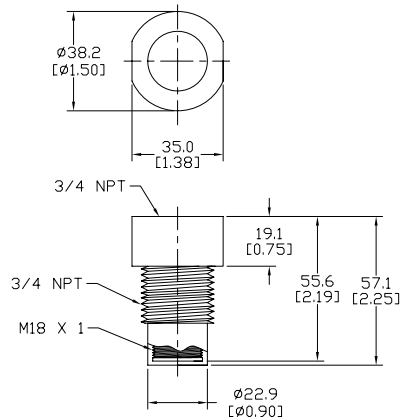


Figure 3

18mm Sensor Mounting Well



See our website: www.AutomationDirect.com for complete engineering drawings

Accessories for 30mm Sensors

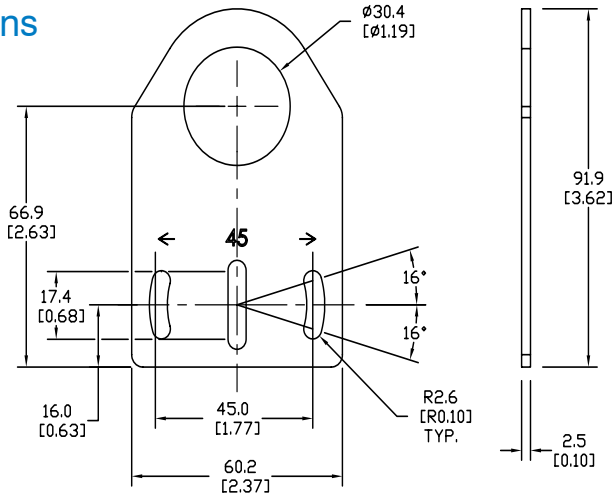
Axial Mounting Bracket

Mounting bracket, axial, zinc-plated steel. For use with 30mm sensors. Has two mounting holes (use 5mm screws) and allows the rotation of an optical axis for right-beam-angle-adaptor sensors. Hexagonal nuts not included.

Accessories for 30mm Sensors			
Part Number	Price	Description	Weight lb (g)
ST30A	\$2.00	Mounting bracket, axial, zinc-plated steel. For use with 30mm sensors. 1/pk.	0.18 (81.7 g)

Dimensions

mm [inches]



ST30A

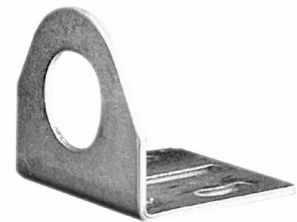
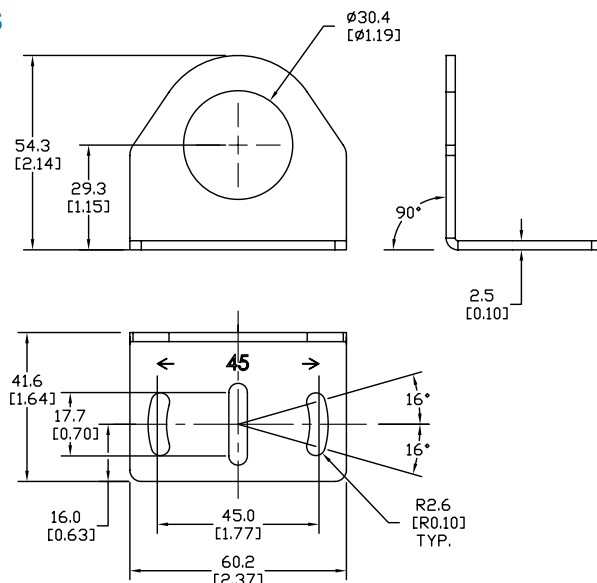
Right-angle Mounting Bracket

Mounting bracket, right-angle, zinc-plated steel. For use with 30mm sensors. Has two mounting holes (use 5mm screws) and allows the rotation of an optical axis for axial sensors. Hexagonal nuts not included.

Accessories for 30mm Sensors			
Part Number	Price	Description	Weight lb (g)
ST30C	\$2.00	Mounting bracket, right angle, zinc-plated steel. For use with 30mm sensors. 1/pk.	0.18 (81.7 g)

Dimensions

mm [inches]



ST30C

See our website: www.AutomationDirect.com for complete engineering drawings

Mounting Rods

Mounting Rods

304 Stainless steel rods for mounting swivel brackets OPT2112 - OPT2127. Available in three lengths: 200mm, 300mm, and 500mm. 12mm diameter.

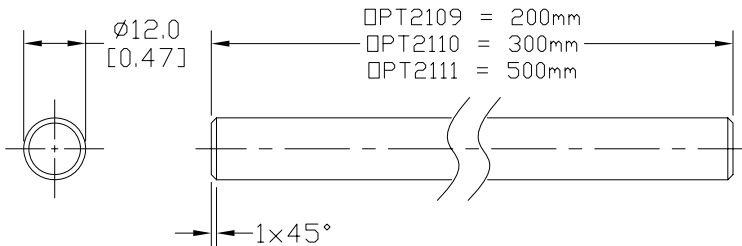
Mounting Rods for OPT2112-2127 Swivel Mounting Brackets			
Part Number	Price	Description	Weight lb (g)
OPT2109	\$10.50	Mounting rod, 12mm diameter, 200mm length, 304 stainless steel.	0.41
OPT2110	\$12.50	Mounting rod, 12mm diameter, 300mm length, 304 stainless steel.	0.60
OPT2111	\$16.50	Mounting rod, 12mm diameter, 500mm length, 304 stainless steel.	0.98



OPT2109, OPT2110, OPT2111

Dimensions

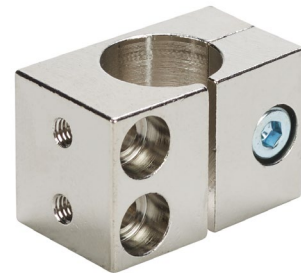
mm [inches]



Right-angle Mounting Bracket

Mounting bracket, right-angle, nickel-plated brass. For use with 12mm mounting rods OPT2109, OPT2110 & OPT2111.

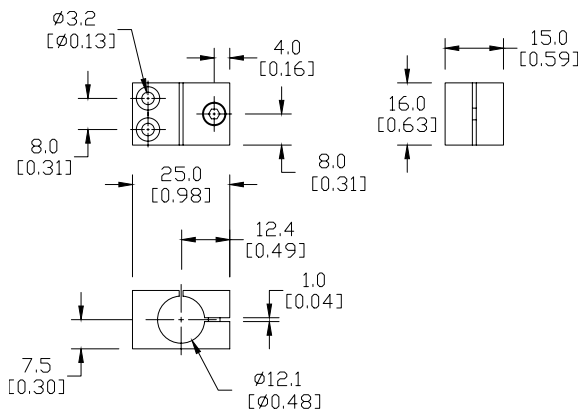
Accessories for 12mm Sensors			
Part Number	Price	Description	Weight lb (g)
OPT2108	\$12.50	Mounting bracket, right-angle, nickel-plated brass. For use with 12mm mounting rods OPT2109, OPT2110 & OPT2111.	0.07 (31.8)



OPT2108

Dimensions

mm [inches]



See our website: www.AutomationDirect.com for complete engineering drawings