

Accessories: Adapter, Mounting Brackets

ST08A axial bracket

Angular mounting bracket for M8 (8 mm) sensors. Has two mounting holes (use 5 mm screws) and allows the rotation of an optical axis for axial sensors. Hexagonal nuts not included.



ST08C right-angle bracket

Mounting M8 (8 mm) sensors. Has two mounting holes (use 5 mm screws) and allows the rotation of an optical axis for right-beam-angle adapter sensors. Hexagonal nuts not included.

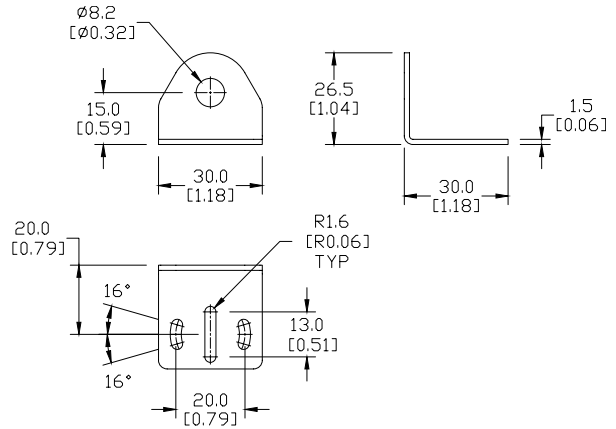
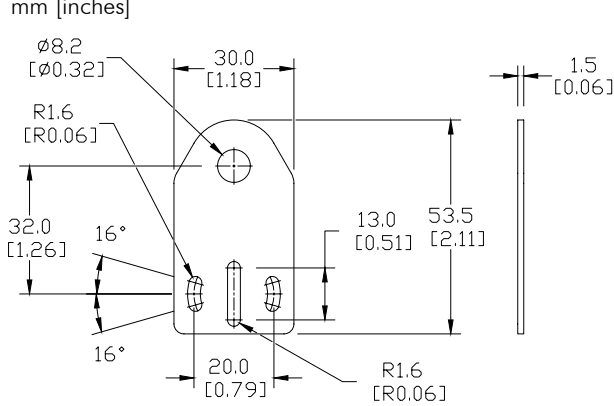


Brackets		
Part Number	Price	Description
ST08A	\$1.00	Zinc-plated steel mounting bracket for M8 sensors axial 1/pk.

Brackets		
Part Number	Price	Description
ST08C	\$1.00	Zinc-plated steel mounting bracket for M8 sensors right angle. 1/pk

All Dimensions

mm [inches]



ST12A axial bracket

For mounting M12 (12 mm) sensors. Has two mounting holes (use 3 mm screws) and allows the rotation of an optical axis for right-beam angle adapter sensors. Hexagonal nuts not included.



ST12C right-angle bracket

Angular mounting bracket for use with M12 (12 mm) sensors. Has two mounting holes (use 3 mm screws) and allows the rotation of an optical axis for axial sensors. Hexagonal nuts not included.

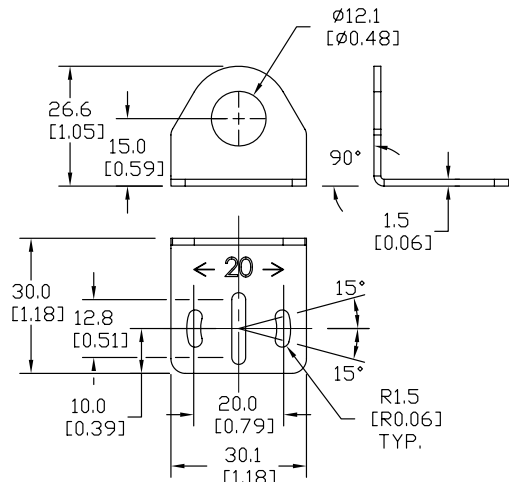
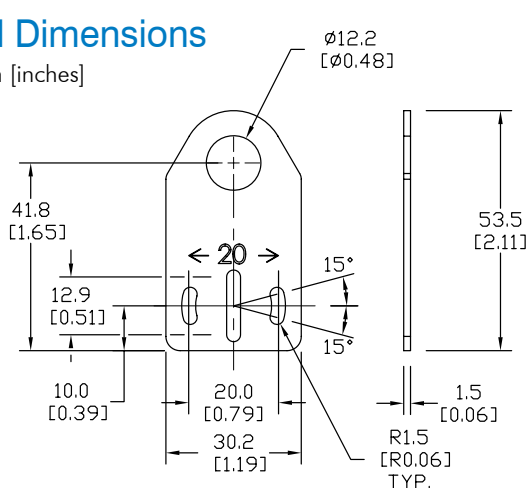


Brackets		
Part Number	Price	Description
ST12A	\$2.00	Zinc-plated iron axial bracket for 12 mm sensors, 1/pk
ST12A7W	\$6.00	316 L stainless steel axial bracket for 12 mm sensors, 1/pk

Brackets		
Part Number	Price	Description
ST12C	\$2.00	Zinc-plated iron right angle bracket for 12 mm sensors, 1/pk
ST12C7W	\$6.00	316 L stainless steel right angle bracket for 12 mm sensors, 1/pk

All Dimensions

mm [inches]



SEE OUR WEBSITE: WWW.AUTOMATIONDIRECT.COM FOR COMPLETE ENGINEERING DRAWINGS.

Accessories: Mounting Brackets

ST18A axial bracket

Mounting bracket for M18 (18 mm) sensors. Has two mounting holes (use 4 mm screws) and allows the rotation of an optical axis for right-beam-angle-adaptor sensors. Hexagonal nuts not included.



ST18C right-angle bracket

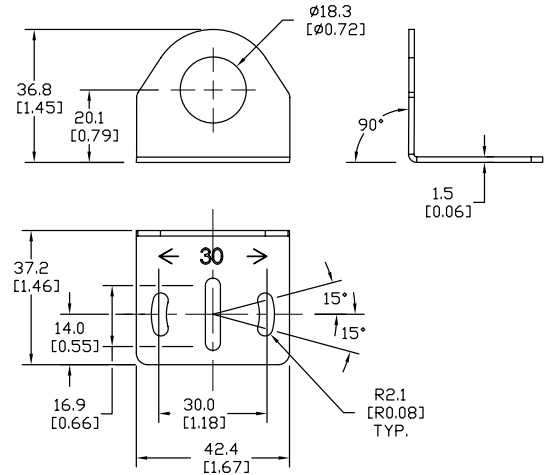
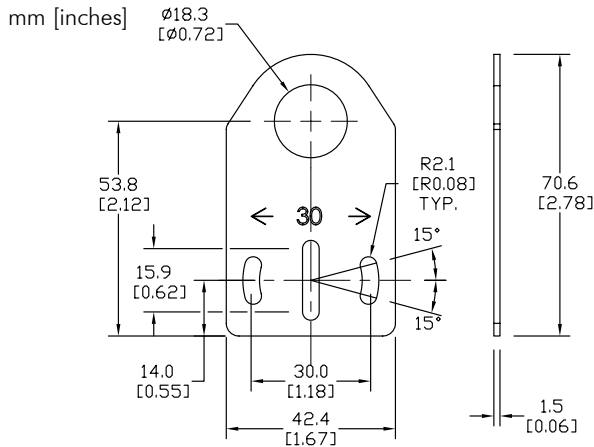
Angular mounting bracket for M18 (18 mm) sensors. Has two mounting holes (use 4 mm screws) and allows the rotation of an optical axis for axial sensors. Hexagonal nuts not included.



Brackets		
Part Number	Price	Description
ST18A	\$1.25	Zinc plated iron axial bracket for 18 mm sensors, 1/pk
ST18A7W	\$6.00	316 L stainless steel axial bracket for 18 mm sensors, 1/pk

Brackets		
Part Number	Price	Description
ST18C	\$1.25	Zinc plated iron right angle bracket for 18 mm sensors, 1/pk
ST18C7W	\$6.00	316 L stainless steel right angle bracket for 18 mm sensors, 1/pk

All Dimensions



ST30A axial bracket

Mounting M30 (30 mm) sensors. Has two mounting holes (use 5 mm screws) and allows the rotation of an optical axis for right-beam-angle-adaptor sensors. Hexagonal nuts not included.



ST30C right-angle bracket

Angular mounting bracket for M30 (30 mm) sensors. Has two mounting holes (use 5 mm screws) and allows the rotation of an optical axis for axial sensors. Hexagonal nuts not included.



Brackets		
Part Number	Price	Description
ST30A	\$2.25	Zinc plated iron axial bracket for 30 mm sensors, 1/pk

Brackets		
Part Number	Price	Description
ST30C	\$2.25	Zinc plated iron right angle bracket for 30 mm sensors, 1/pk

All Dimensions

