

PD Series Inductive Proximity Sensors

Miniature M5 (5 mm) stainless steel – DC



- Eight models available
- Stainless steel construction
- Axial cable or M8 quick-disconnect models
- Complete overload protection
- IP67 rated
- Smallest self-contained inductive proximity sensor available on the U.S. market
- LED status indicator
- Lifetime warranty



Dimensions

mm [inches]

Figure 1

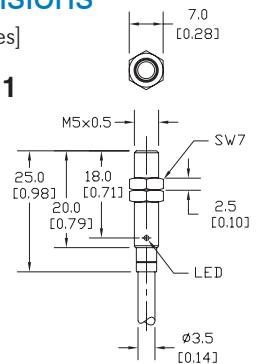
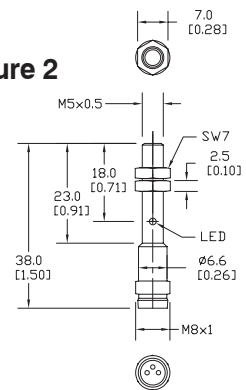


Figure 2



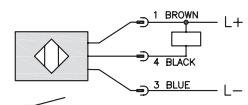
PD Series M5 DC Inductive Prox Selection Chart							
Part Number	Price	Sensing Range	Housing	Output State	Logic	Connection	Dimensions
Standard Distance							
PD1-AN-1A	\$41.00	0.8 mm (0.03 in)	Shielded	NO	NPN	2 m (6.5') axial cable	Figure 1
PD1-AP-1A	\$41.00				PNP	2 m (6.5') axial cable	Figure 1
PD1-AN-1F	\$41.00				NPN	M8 (8 mm) connector	Figure 2
PD1-AP-1F	\$41.00				PNP	M8 (8 mm) connector	Figure 2
Extended Distance							
PD1-AN-3A	\$49.00	1.5 mm (0.06 in)	Shielded	N.O	NPN	2 m (6.5') axial cable	Figure 1
PD1-AP-3A	\$49.00				PNP	2 m (6.5') axial cable	Figure 1
PD1-AN-3F	\$49.00				NPN	M8 (8 mm) connector	Figure 2
PD1-AP-3F	\$49.00				PNP	M8 (8 mm) connector	Figure 2

PD Series Specifications

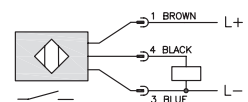
Mounting Type	Standard Distance	Extended Distance
	Shielded	
Nominal Sensing Distance	0.8 mm (0.03 in)	1.5 mm (0.06 in)
Operating Distance	NA	
Material Correction Factors	See the Material influence table	
Output Type	NPN or PNP/NO only/3-wire	
Operating Voltage	10 to 30 VDC	
No-load Supply Current	≤10mA	
Operating (Load) Current	≤200mA	
Off-state (Leakage) Current	≤10µA	≤0.1mA
Voltage Drop	≤2.0 V	
Switching Frequency	5 kHz	3 kHz
Differential Travel (% of Nominal Distance)	≤10%	
Repeat Accuracy	≤1.5%	
Ripple	≤20%	
Time Delay Before Availability (tv)	10 ms	
Reverse Polarity Protection	Yes	
Short-Circuit Protection	Yes (switch auto-resets after overload is removed)	
Operating Temperature	-25° to +70°C (-13° to 158°F)	
Protection Degree (DIN 40050)	IEC IP67	
Indication/Switch Status	Yellow (output energized)	
Housing Material	Stainless steel	
Sensing Face Material	Polybutylene Terephthalate (PBT)	Polyester
Shock/Vibration	See Proximity Sensor Terminology	
Tightening Torque	1.5 Nm (13.3 lb./in.)	
Weight	43 g (1.52 oz)/10 g (0.36 oz)	34 g (1.20 oz)/4 g (0.14 oz)
Connection	2 meter PVC axial cable / M8 connector	
Agency Approvals	UL file E328811	

Wiring diagrams

NPN Output

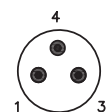


PNP Output



Connector

M8 connector



Accessories for 5mm Sensors

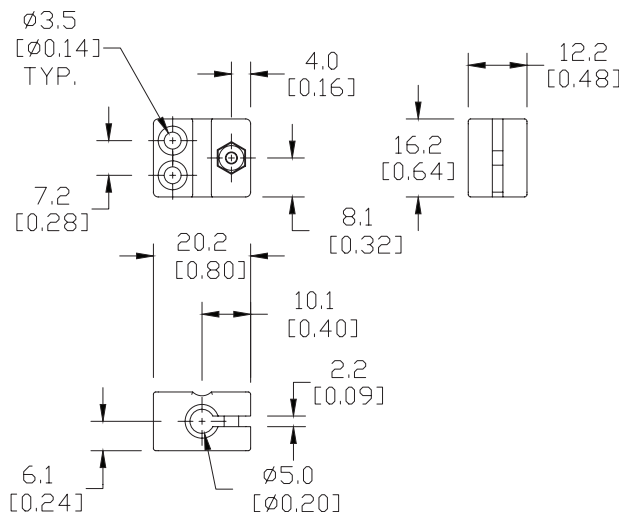
Right-angle Mounting Bracket

Mounting bracket, right-angle, plastic. For use with 5mm sensors.

Accessories for 5mm Sensors			
Part Number	Price	Description	Weight [lb]
OPT2100	\$6.00	Mounting bracket, right-angle, plastic. For use with 5mm sensors.	0.02

Dimensions

mm [inches]



OPT2100

See our website: www.AutomationDirect.com for complete engineering drawings