

DW Series M5 Stainless Steel Proximity Sensors

Miniature M5 (5mm) stainless steel – DC



- Four models available
- Complete overload protection
- Factor 1 on steel and aluminum
- IP67 rated
- Stainless steel construction
- Full metal housing
- LED status indicator
- IO-Link versions available
- Lifetime warranty



DW Series 5mm Extended Distance Inductive Prox Selection Chart

Part Number	Price	Size	Sensing Range	Housing	Output State	Logic	Connection	Wiring	Dimensions
Extended Distance									
<i>DW-AD-711-M5</i>	\$99.00	M5	3mm (0.118 in)	Unshielded	NO	NPN	2m (6.5 ft) axial cable	Diagram 1	Figure 1
<i>DW-AV-711-M5-276</i>	\$99.00					NPN	M8 with 0.2 m cable	Diagram 3	Figure 2
<i>DW-AD-713-M5*</i>	\$99.00					PNP	2m (6.5 ft) axial cable	Diagram 2	Figure 1
<i>DW-AV-713-M5-276*</i>	\$99.00					PNP	M8 with 0.2 m cable	Diagram 4	Figure 2

* IO-Link model

DW Series M5 Stainless Steel Proximity Sensors

DW Series M5 Specifications	
	DW-Ax-71x-M5
Mounting Type	Unshielded
Nominal Sensing Distance	3mm (0.118 in)
Operating Distance	-
Material Correction Factors	See the Material influence table
Output Type	NPN or PNP, NO
Operating Voltage	10 to 30 VDC
No-load Supply Current	≤ 10mA
Operating (Load) Current	≤ 200mA
Off-state (Leakage) Current	≤ 0.1 mA
Voltage Drop	≤ 2V
Switching Frequency	≤ 1200Hz
Differential Travel (% of Nominal Distance)	≤ 15%
Repeat Accuracy	0.15 mm
Ripple	≤ 20%
Time Delay Before Availability (tv)	≤ 30ms
Reverse Polarity Protection	Yes
Short-Circuit Protection	Yes
Operating Temperature	-25 to 70°C (-13 to 158°F)
Protection Degree (DIN 40050)	IP67
Indication/Switch Status	Yellow LED (LED on continuously - secured operating zone)
Housing Material	Stainless steel V2A
Sensing Face Material	Stainless steel V2A
Shock/Vibration	IEC 60947-5-2/7.4
Tightening Torque	1.5 N•m (13.3 lb•in)
Weight	30g (1.06 oz) with cable, 10g (0.35 oz) without cable
Connection	2m cable (PVC [polyvinyl chloride] 3 x 0.14mm ² ≈ 26 AWG) or 0.2 m cable (PVC [polyvinyl chloride]) with M8 connection
Minimum Mounting Distance (center to center)	40.0 mm (1.57 in)
IO-Link	PNP/NO version only
Agency Approvals	CE, cULus E239373

Note: To obtain the most current agency approval information, see the Agency Approval Checklist section on the specific part number's web page.

Wiring diagrams

Diagram 1

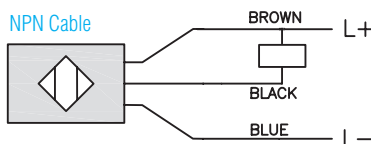
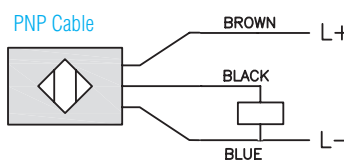


Diagram 2



Connectors



Diagram 3

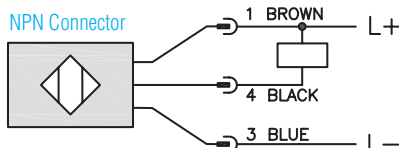
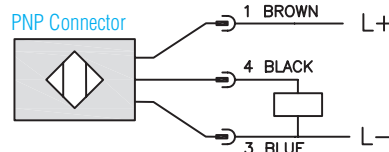


Diagram 4



DW Series M5 Stainless Steel Proximity Sensors

Dimensions

mm [inches]

Figure 1

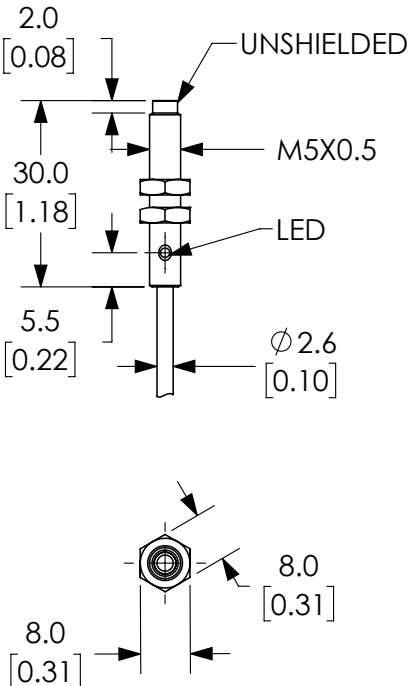
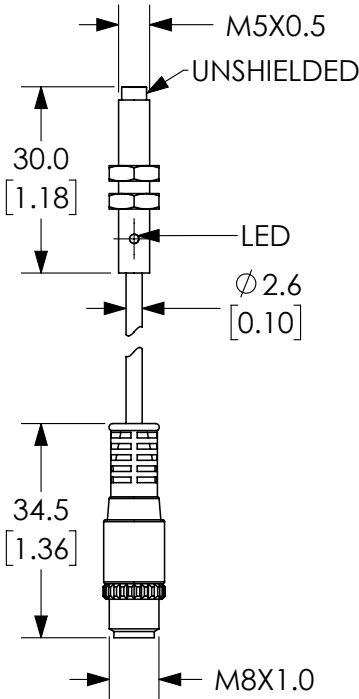


Figure 2



See our website www.AutomationDirect.com for complete engineering drawings.

Accessories for 5mm Sensors

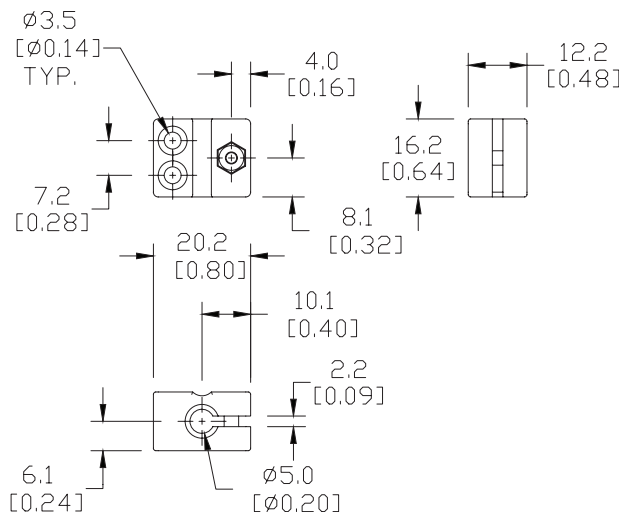
Right-angle Mounting Bracket

Mounting bracket, right-angle, plastic. For use with 5mm sensors.

Accessories for 5mm Sensors			
Part Number	Price	Description	Weight [lb]
OPT2100	\$6.25	Mounting bracket, right-angle, plastic. For use with 5mm sensors.	0.02

Dimensions

mm [inches]



OPT2100

See our website: www.AutomationDirect.com for complete engineering drawings