

DW Series 5mm Triple Sensing Proximity Sensors

Miniature M5 (5mm) nickel silver– DC



- Eight models available
- 5mm triple distance proximity sensor
- Complete overload protection
- IP67 rated
- Two M5 lock nuts included
- Nickel silver construction
- LED status indicator
- Lifetime warranty



DW Series 5mm Triple Distance Inductive Prox Selection Chart									
Part Number	Price	Size	Sensing Range	Housing	Output State	Logic	Connection	Wiring	Dimensions
Triple Distance									
DW-AD-501-M5	\$80.00	M5	2.5 mm (0.098 in)	Shielded	NO	NPN	2m (6.5') axial cable	Diagram 1	Figure 1
DW-AD-503-M5	\$80.00					PNP		Diagram 2	Figure 1
DW-AS-501-M5	\$80.00					NPN	M8 quick disconnect	Diagram 3	Figure 2
DW-AS-503-M5	\$80.00					PNP		Diagram 4	Figure 2
DW-AD-502-M5	\$80.00				NC	NPN	2m (6.5') axial cable	Diagram 1	Figure 1
DW-AD-504-M5	\$80.00					PNP		Diagram 2	Figure 1
DW-AS-502-M5	\$80.00					NPN	M8 quick disconnect	Diagram 3	Figure 2
DW-AS-504-M5	\$80.00					PNP		Diagram 4	Figure 2

DW Series Specifications	DW-Ax-50x-M5
Mounting Type	Shielded
Nominal Sensing Distance	2.5 mm
Operating Distance	–
Material Correction Factors	See the Material influence table
Output Type	NPN or PNP, NO or NC
Operating Voltage	10 to 30 VDC
No-load Supply Current	≤ 10mA
Operating (Load) Current	≤ 200mA
Off-state (Leakage) Current	≤ 0.1 mA
Voltage Drop	≤ 2V
Switching Frequency	≤ 800Hz
Differential Travel (% of Nominal Distance)	≤ 10%
Repeat Accuracy	0.03 mm
Ripple	≤ 20%
Time Delay Before Availability (tv)	≤ 30ms
Reverse Polarity Protection	Yes
Short-Circuit Protection	Yes
Operating Temperature	-25 to 70°C (-13 to 158°F)
Protection Degree (DIN 40050)	IP67
Indication/Switch Status	Yellow LED
Housing Material	Nickel silver
Sensing Face Material	PPE (Noryl)
Shock/Vibration	IEC 60947-5-2/7.4
Tightening Torque	–
Weight	33g (1.16 oz), 5g (0.18 oz)
Connection	2m cable, M8 connection
IO-Link	–
Agency Approvals	CE, cULus E239373

Note: To obtain the most current agency approval information, see the Agency Approval Checklist section on the specific part number's web page.

DW Series 5mm Triple Sensing Proximity Sensors

Dimensions

mm [inches]

Figure 1

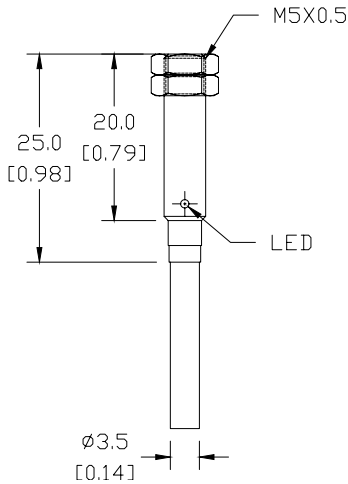
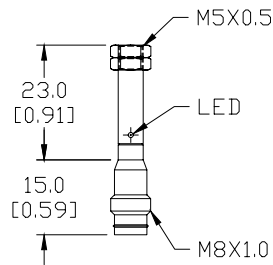


Figure 2



Wiring diagrams

Diagram 1

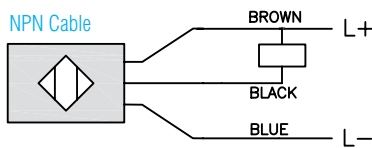


Diagram 2

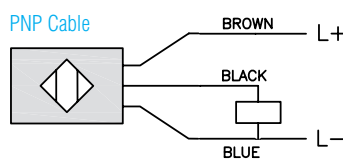


Diagram 3

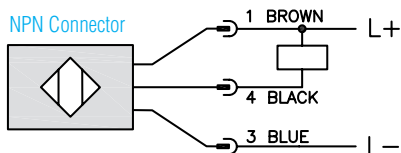
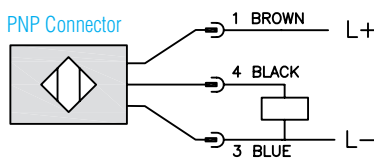
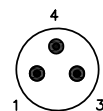


Diagram 4



Connectors

M8 connector



SEE OUR WEBSITE: WWW.AUTOMATIONDIRECT.COM FOR COMPLETE ENGINEERING DRAWINGS.

Accessories for 5mm Sensors

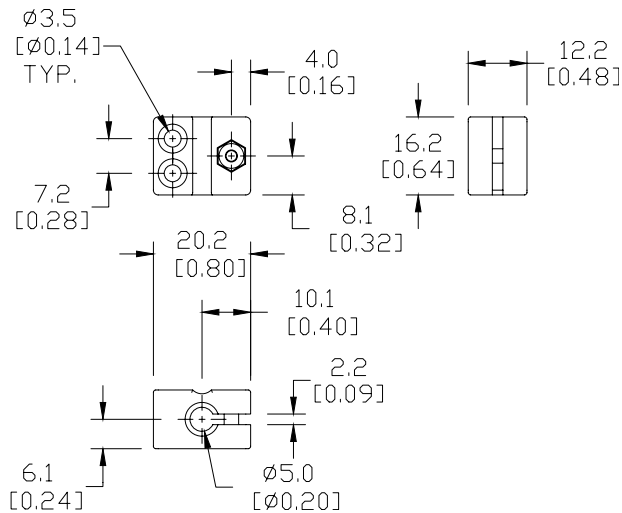
Right-angle Mounting Bracket

Mounting bracket, right-angle, plastic. For use with 5mm sensors.

Accessories for 5mm Sensors			
Part Number	Price	Description	Weight [lb]
OPT2100	\$6.25	Mounting bracket, right-angle, plastic. For use with 5mm sensors.	0.02

Dimensions

mm [inches]



OPT2100

See our website: www.AutomationDirect.com for complete engineering drawings