

DW Series 3mm Inductive Proximity Sensors

Miniature Ø3 (3mm) – DC



- Four models available
- Complete overload protection
- IP67 rated
- Stainless steel construction

- LED status indicator
- Lifetime warranty



DW Series Ø3 (3mm) DC Inductive Prox Selection Chart									
Part Number	Price	Size	Sensing Range	Housing	Output State	Logic	Connection	Wiring	Dimensions
Extended Distance									
DW-AD-621-03-960	\$66.00	Ø3 (Smooth barrel)	1mm (0.039 in)	Shielded	NO	NPN	2m (6.5 ft) axial cable	Diagram 1	Figure 1
DW-AD-623-03-960*	\$66.00					PNP		Diagram 2	Figure 1
DW-AD-622-03	\$66.00				NC	NPN		Diagram 1	Figure 2
DW-AD-624-03	\$66.00					PNP		Diagram 2	Figure 2

*IO-Link model

Dimensions

mm [inches]

Figure 1

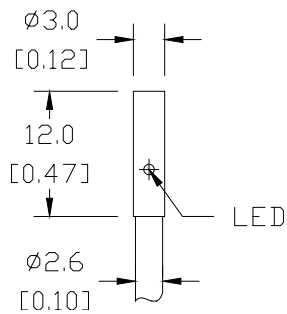
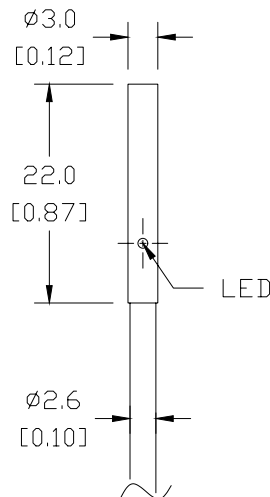


Figure 2



DW Series 3mm Inductive Proximity Sensors

DW Series Ø3 Specifications		
	DW-Ax-62x-03-96x	DW-Ax-62x-03
Mounting Type	Shielded	
Nominal Sensing Distance	1mm	
Operating Distance	-	
Material Correction Factors	See the Material influence table	
Output Type	NPN or PNP, NO or NC	
Operating Voltage	10 to 30 VDC	
No-load Supply Current	≤ 10mA	
Operating (Load) Current	≤ 100mA	
Off-state (Leakage) Current	≤ 0.1 mA	
Voltage Drop	≤ 2 V	
Switching Frequency	≤8kHz	≤3kHz
Differential Travel (% of Nominal Distance)	≤ 10%	
Repeat Accuracy	0.02 mm	
Ripple	≤ 20%	
Time Delay Before Availability (tv)	≤10ms	
Reverse Polarity Protection	Yes	
Short-Circuit Protection	Yes	
Operating Temperature	-25 to 70°C (-13 to 158°F)	
Protection Degree (DIN 40050)	IP67	
Indication/Switch Status	Yellow LED	
Housing Material	Stainless steel	
Sensing Face Material	POM (polyoxymethylene)	
Shock/Vibration	IEC 60947-5-2/7.4	
Tightening Torque	-	
Weight	18g (0.625 oz)	
Connection	2m cable	
IO-Link	PNP NO Version Only	
Agency Approvals	cULus E239373	

Note: To obtain the most current agency approval information, see the Agency Approval Checklist section on the specific part number's web page.

Wiring diagrams

Diagram 1

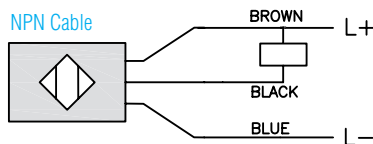


Diagram 2

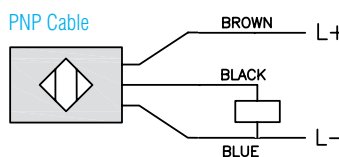


Diagram 3

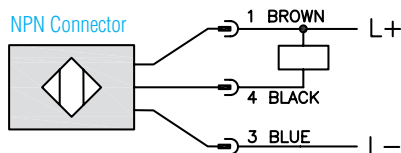
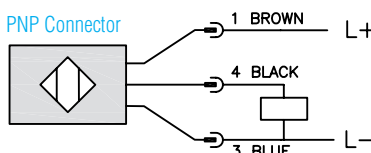


Diagram 4



Accessories for 3mm Sensors

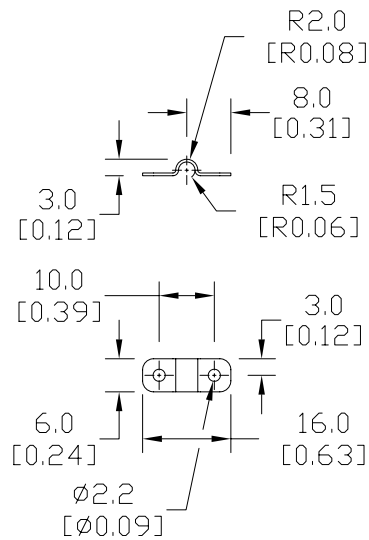
Right-angle Mounting Bracket

Mounting bracket, right-angle, 316L stainless steel. Package of 2. For use with 3mm sensors.

Accessories for 3mm Sensors			
Part Number	Price	Description	Weight [lb]
OPT2037	\$20.50	Mounting bracket, right-angle, 316L stainless steel. Package of 2. For use with 3mm sensors.	0.02

Dimensions

[mm] inches



OPT2037

See our website: www.AutomationDirect.com for complete engineering drawings