

DW Series 12mm Stainless Steel Triple Sensing Proximity Sensors



M12 stainless steel – DC

- Eight models available
- 12mm threaded triple distance proximity sensor
- 10mm sensing
- Complete overload protection
- IP68, IP69k rated
- Two M12 lock nuts included
- Stainless steel construction
- One-piece for harsh duty applications
- LED status indicator
- Lifetime warranty

DW Series 12mm Triple Distance Inductive Prox Selection Chart									
Part Number	Price	Size	Sensing Range	Housing	Output State	Logic	Connection	Wiring	Dimensions
Triple Distance									
DW-AD-711-M12	\$84.00	M12	10mm (0.393 in)	Unshielded	NO	NPN	2m (6.5') axial cable	Diagram 1	Figure 1
DW-AD-713-M12*	\$84.00					PNP		Diagram 2	Figure 1
DW-AS-711-M12	\$84.00					NPN	M12 quick-disconnect	Diagram 3	Figure 2
DW-AS-713-M12*	\$84.00					PNP		Diagram 4	Figure 2
DW-AD-712-M12	\$84.00				NC	2m (6.5') axial cable	NPN	Diagram 1	Figure 1
DW-AD-714-M12	\$84.00						PNP	Diagram 2	Figure 1
DW-AS-712-M12	\$84.00					NPN	M12 quick-disconnect	Diagram 3	Figure 2
DW-AS-714-M12	\$84.00					PNP		Diagram 4	Figure 2

* IO-Link model

Wiring diagrams

Diagram 1

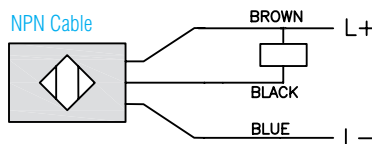


Diagram 2

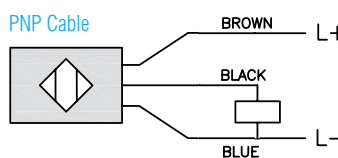


Diagram 3

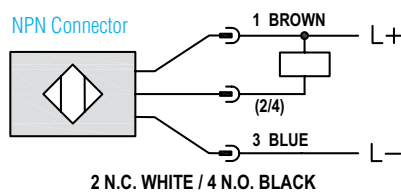
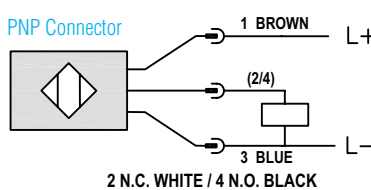
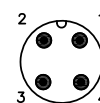


Diagram 4



Connectors

M12 connector



DW Series 12mm Stainless Steel Triple Sensing Proximity Sensors

DW Series Specifications	DW-Ax-71x-M12
Mounting Type	Unshielded
Nominal Sensing Distance	10mm
Operating Distance	-
Material Correction Factors	See the Material influence table
Output Type	NPN or PNP, NO or NC
Operating Voltage	10 to 30 VDC
No-load Supply Current	≤ 10mA
Operating (Load) Current	≤ 200mA
Off-state (Leakage) Current	≤ 0.1 mA
Voltage Drop	≤ 2 V
Switching Frequency	≤ 400 Hz
Differential Travel (% of Nominal Distance)	≤ 10%
Repeat Accuracy	0.30 mm
Ripple	≤ 20%
Time Delay Before Availability (tv)	≤ 70ms
Reverse Polarity Protection	Yes
Short-Circuit Protection	Yes
Operating Temperature	-25 to 70°C (-13 to 158°F)
Protection Degree (DIN 40050)	IP68, IP69K
Indication/Switch Status	Yellow LED
Housing Material	Stainless steel
Sensing Face Material	Stainless steel
Shock/Vibration	IEC 60947-5-2/7.4
Tightening Torque	-
Weight	80g (2.82 oz), 23g (0.81 oz)
Connection	2m cable, M12 connection
IO-Link	PNP/NO only
Agency Approvals	CE, cULus E239373

Note: To obtain the most current agency approval information, see the Agency Approval Checklist section on the specific part number's web page.

Dimensions

mm [inches]

Figure 1

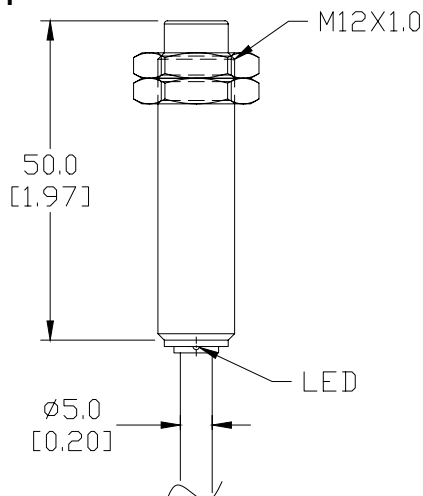
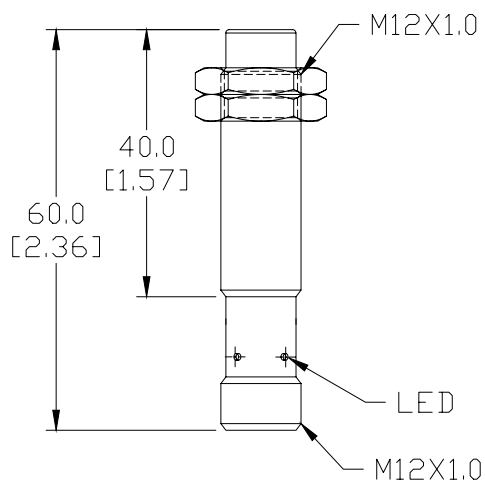


Figure 2



SEE OUR WEBSITE: WWW.AUTOMATIONDIRECT.COM FOR COMPLETE ENGINEERING DRAWINGS.

Accessories for 12mm Sensors

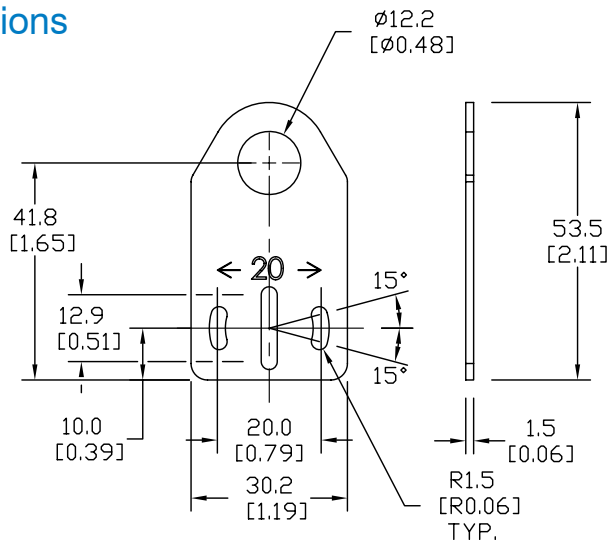
Axial Mounting Bracket

Mounting bracket, axial, zinc-plated steel. For use with 12mm sensors. Has two mounting holes (use 3mm screws) and allows the rotation of an optical axis for right-angle adapter sensors. Hexagonal nuts not included.

Accessories for 12mm Sensors			
Part Number	Price	Description	Weight (lb)
ST12A	\$2.00	Mounting bracket, axial, zinc-plated steel. For use with 12mm sensors. 1/pk.	0.03
ST12A7W	\$6.00	Mounting bracket, axial, 316L stainless steel. For use with 12mm sensors. 1/pk.	0.03

Dimensions

mm [inches]



ST12A

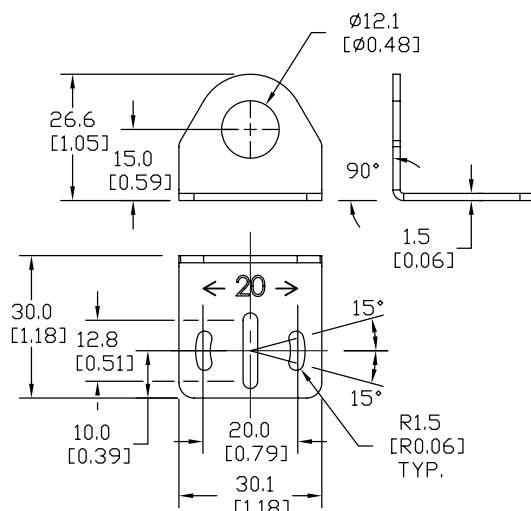
Right-angle Mounting Bracket

Mounting bracket, right-angle, zinc-plated steel or 316L stainless steel. For use with 12mm sensors. Has two mounting holes (use 3mm screws) and allows the rotation of an optical axis for axial sensors. Hexagonal screws not included.

Accessories for 12mm Sensors			
Part Number	Price	Description	Weight (lb)
ST12C	\$2.00	Mounting bracket, right angle, zinc-plated steel. For use with 12mm sensors. 1/pk.	0.03
ST12C7W	\$6.00	Mounting bracket, right angle, 316L stainless steel. For use with 12mm sensors. 1/pk.	0.03

Dimensions

mm [inches]



ST12C

See our website: www.AutomationDirect.com for complete engineering drawings

Accessories for 12mm Sensors

Right-angle Mounting Brackets

Mounting bracket, right-angle, fixed insertion stop adjustment, plastic. For use with 12mm sensors. Available with or without fixed insertion stop.

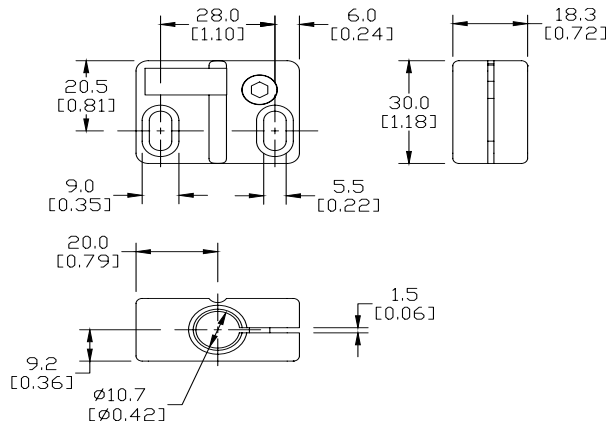
Accessories for 12mm Sensors					
Part Number	Price	Description	Weight [lb]		
OPT2102	\$6.00	Mounting bracket, right-angle, fixed insertion stop adjustment, plastic. For use with 12mm sensors.	0.05		
OPT2103	\$6.00	Mounting bracket, right-angle, plastic. For use with 12mm sensors.	0.05		



OPT2102, OPT2103

Dimensions

mm [inches]



Right-angle Swivel Mounting Systems

Mounting bracket, right-angle swivel, 360 degree vertical and horizontal adjustment, 12mm rod mount. For use with 12mm sensors. Available in all stainless steel or with an aluminum head and stainless steel mounting plate.

Accessories for 12mm Sensors					
Part Number	Price	Description	Mounting Head	Mounting Plate	Weight [lb]
OPT2114	\$9.00	Mounting bracket, right-angle swivel, 360 vertical and horizontal adjustment, aluminum, 12mm rod mount. For use with 12mm sensors.	Aluminum	Stainless Steel	0.14
OPT2115	\$16.00	Mounting bracket, right-angle swivel, 360 vertical and horizontal adjustment, 304 stainless steel, 12mm rod mount. For use with 12mm sensors.	304 Stainless Steel	304 Stainless Steel	0.27

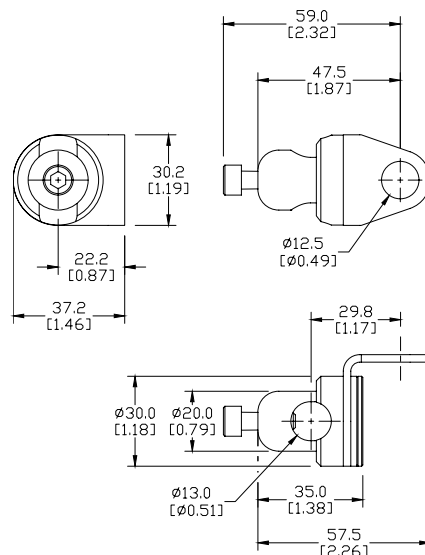
Note: 304 Stainless steel mounting rods sold separately: OPT2109 (200mm length), OPT2110 (300mm length), and OPT2111 (500mm length).



OPT2114, OPT2115

Dimensions

mm [inches]



See our website: www.AutomationDirect.com for complete engineering drawings

Mounting Rods

Mounting Rods

304 Stainless steel rods for mounting swivel brackets OPT2112 - OPT2127. Available in three lengths: 200mm, 300mm, and 500mm. 12mm diameter.

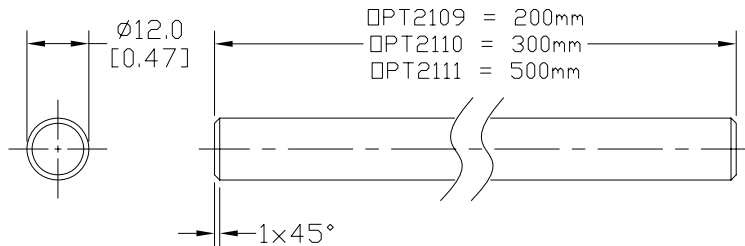
Mounting Rods for OPT2112-2127 Swivel Mounting Brackets			
Part Number	Price	Description	Weight [lb]
OPT2109	\$10.00	Mounting rod, 12mm diameter, 200mm length, 304 stainless steel.	0.41
OPT2110	\$12.00	Mounting rod, 12mm diameter, 300mm length, 304 stainless steel.	0.60
OPT2111	\$16.00	Mounting rod, 12mm diameter, 500mm length, 304 stainless steel.	0.98



OPT2109, OPT2110, OPT2111

Dimensions

mm [inches]



Right-angle Mounting Bracket

Mounting bracket, right-angle, nickel-plated brass. For use with 12mm mounting rods OPT2109, OPT2110 & OPT2111.

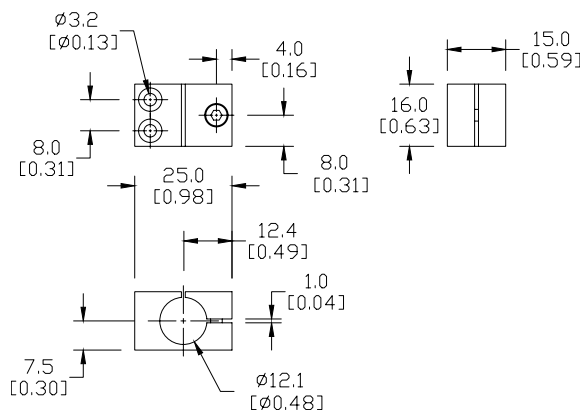
Accessories for 12mm Sensors			
Part Number	Price	Description	Weight [lb]
OPT2108	\$12.00	Mounting bracket, right-angle, nickel-plated brass. For use with 12mm mounting rods OPT2109, OPT2110 & OPT2111.	0.07



OPT2108

Dimensions

mm [inches]



See our website: www.AutomationDirect.com for complete engineering drawings