

# DW Series 12mm Triple Sensing Proximity Sensors

## M12 chrome plated brass – DC



- Sixteen models available
- 12mm threaded triple distance proximity sensor
- 6mm and 10mm sensing
- Complete overload protection
- IP67 rated
- Two M12 lock nuts included
- Chrome plated brass construction
- LED status indicator
- Lifetime warranty

DW Series M12 Triple Distance Inductive Prox Selection Chart									
Part Number	Price	Size	Sensing Range	Housing	Output State	Logic	Connection	Wiring	Dimensions
<b>Triple Distance Shielded</b>									
DW-AD-501-M12	\$53.00	M12	6mm (0.236 in)	Shielded	NO	NPN	2m (6.5 ft) axial cable	Diagram 1	Figure 1
DW-AD-503-M12	\$53.00					PNP		Diagram 2	Figure 1
DW-AS-501-M12	\$53.00					NPN	M12 quick disconnect	Diagram 3	Figure 3
DW-AS-503-M12	\$53.00					PNP		Diagram 4	Figure 3
DW-AD-502-M12	\$53.00				NC	2m (6.5 ft) axial cable	NPN	Diagram 1	Figure 1
DW-AD-504-M12	\$53.00						PNP	Diagram 2	Figure 1
DW-AS-502-M12	\$53.00					M12 quick disconnect	NPN	Diagram 3	Figure 3
DW-AS-504-M12	\$53.00						PNP	Diagram 4	Figure 3
<b>Triple Distance Unshielded</b>									
DW-AD-511-M12	\$57.00	M12	10mm (0.393 in)	Unshielded	NO	NPN	2m (6.5 ft) axial cable	Diagram 1	Figure 2
DW-AD-513-M12	\$57.00					PNP		Diagram 2	Figure 2
DW-AS-511-M12	\$57.00					M12 quick disconnect	NPN	Diagram 3	Figure 4
DW-AS-513-M12	\$57.00						PNP	Diagram 4	Figure 4
DW-AD-512-M12	\$57.00				NC	2m (6.5 ft) axial cable	NPN	Diagram 1	Figure 2
DW-AD-514-M12	\$57.00						PNP	Diagram 2	Figure 2
DW-AS-512-M12	\$57.00					M12 quick disconnect	NPN	Diagram 3	Figure 4
DW-AS-514-M12	\$57.00						PNP	Diagram 4	Figure 4

### Wiring diagrams

Diagram 1

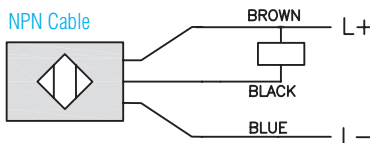


Diagram 2

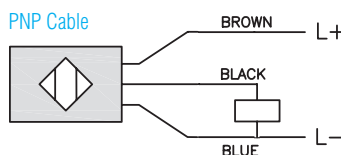


Diagram 3

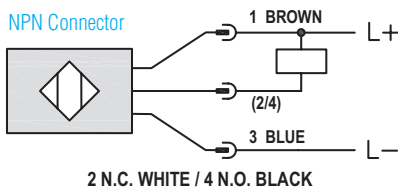
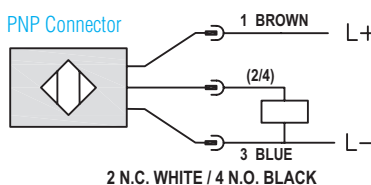
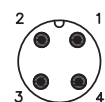


Diagram 4



### Connectors

M12 connector



# DW Series 12mm Triple Sensing Proximity Sensors

DW Series M12 Specifications		
	DW-Ax-50x-M12	DW-Ax-51x-M12
Mounting Type	shielded	unshielded
Nominal Sensing Distance	6mm	10mm
Operating Distance	-	
Material Correction Factors	See the <a href="#">Material influence table</a>	
Output Type	NPN or PNP, NO or NC	
Operating Voltage	10 to 30 VDC	
No-load Supply Current	≤ 10mA	
Operating (Load) Current	≤ 200mA	
Off-state (Leakage) Current	≤ 0.1 mA	
Voltage Drop	≤ 2 V	
Switching Frequency	≤ 800 Hz	≤ 400Hz
Differential Travel (% of Nominal Distance)	≤ 10%	
Repeat Accuracy	0.15 mm	0.30 mm
Ripple	≤ 20%	
Time Delay Before Availability (tv)	≤ 50ms	
Reverse Polarity Protection	Yes	
Short-Circuit Protection	Yes	
Operating Temperature	-25 to 70°C (-13 to 158°F)	
Protection Degree (DIN 40050)	IP67	
Indication/Switch Status	Yellow LED	
Housing Material	Chrome-plated brass	
Sensing Face Material	PPS (Polyphenylene sulfide)	
Shock/Vibration	IEC 60947-5-2/7.4	
Tightening Torque	-	
Weight	92g (3.25 oz), 26g (0.92 oz)	90g (3.17 oz), 25g (0.88 oz)
Connection	2m cable, M12 connection	
IO-Link	-	
Agency Approvals	CE, cULus E239373	

Note: To obtain the most current agency approval information, see the Agency Approval Checklist section on the specific part number's web page.

## Dimensions

mm [inches]

Figure 1

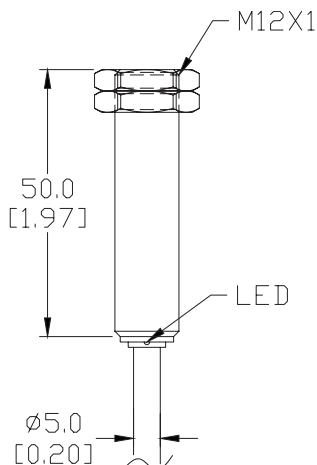
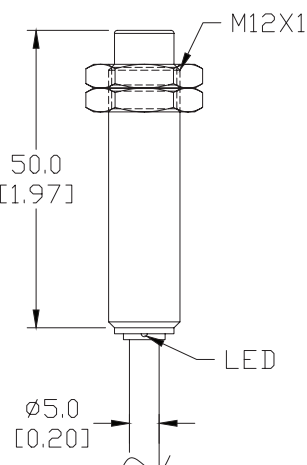


Figure 2



# DW Series 12mm Triple Sensing Proximity Sensors

## Dimensions

mm [inches]

Figure 3

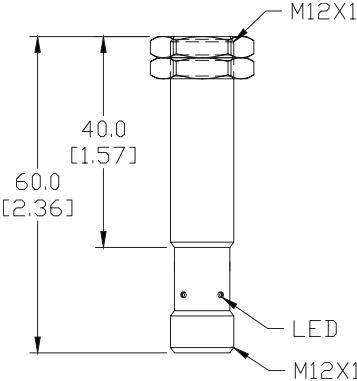
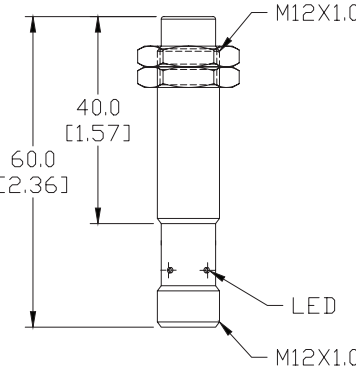


Figure 4



SEE OUR WEBSITE: [WWW.AUTOMATIONDIRECT.COM](http://WWW.AUTOMATIONDIRECT.COM) FOR COMPLETE ENGINEERING DRAWINGS.

# Accessories for 12mm Sensors

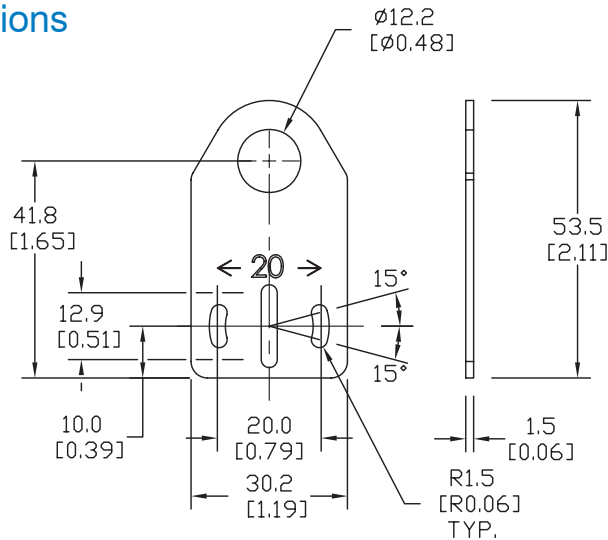
## Axial Mounting Bracket

Mounting bracket, axial, zinc-plated steel. For use with 12mm sensors. Has two mounting holes (use 3mm screws) and allows the rotation of an optical axis for right-angle adapter sensors. Hexagonal nuts not included.

Accessories for 12mm Sensors			
Part Number	Price	Description	Weight (lb)
ST12A	\$2.00	Mounting bracket, axial, zinc-plated steel. For use with 12mm sensors. 1/pk.	0.03
ST12A7W	\$6.00	Mounting bracket, axial, 316L stainless steel. For use with 12mm sensors. 1/pk.	0.03

### Dimensions

mm [inches]



ST12A

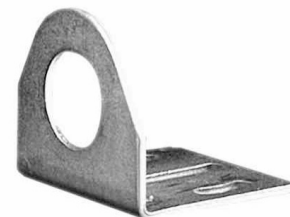
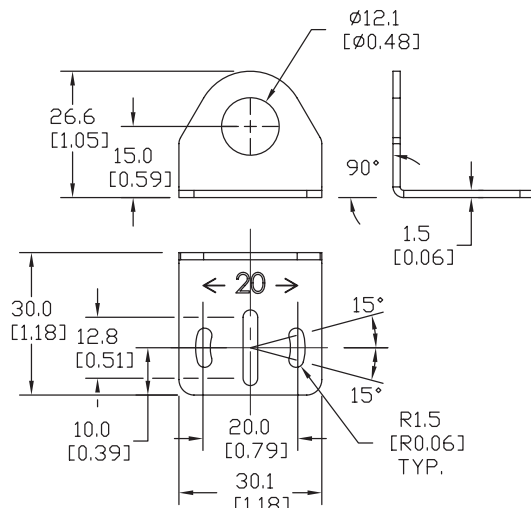
## Right-angle Mounting Bracket

Mounting bracket, right-angle, zinc-plated steel or 316L stainless steel. For use with 12mm sensors. Has two mounting holes (use 3mm screws) and allows the rotation of an optical axis for axial sensors. Hexagonal screws not included.

Accessories for 12mm Sensors			
Part Number	Price	Description	Weight (lb)
ST12C	\$2.00	Mounting bracket, right angle, zinc-plated steel. For use with 12mm sensors. 1/pk.	0.03
ST12C7W	\$6.00	Mounting bracket, right angle, 316L stainless steel. For use with 12mm sensors. 1/pk.	0.03

### Dimensions

mm [inches]



ST12C

See our website: [www.AutomationDirect.com](http://www.AutomationDirect.com) for complete engineering drawings

# Accessories for 12mm Sensors

## Right-angle Mounting Brackets

Mounting bracket, right-angle, fixed insertion stop adjustment, plastic. For use with 12mm sensors. Available with or without fixed insertion stop.

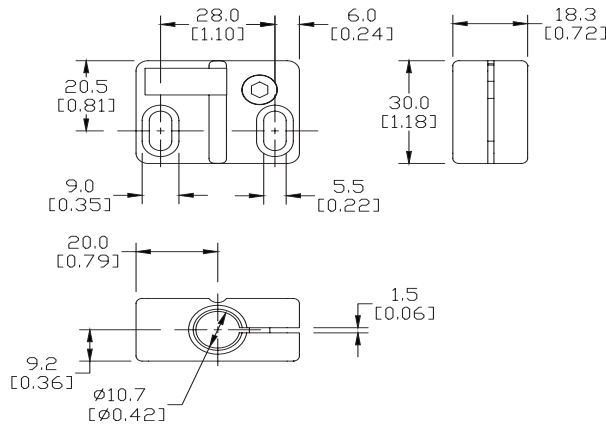
Accessories for 12mm Sensors					
Part Number	Price	Description	Weight [lb]		
<b>OPT2102</b>	\$6.00	Mounting bracket, right-angle, fixed insertion stop adjustment, plastic. For use with 12mm sensors.	0.05		
<b>OPT2103</b>	\$6.00	Mounting bracket, right-angle, plastic. For use with 12mm sensors.	0.05		



**OPT2102, OPT2103**

## Dimensions

mm [inches]



## Right-angle Swivel Mounting Systems

Mounting bracket, right-angle swivel, 360 degree vertical and horizontal adjustment, 12mm rod mount. For use with 12mm sensors. Available in all stainless steel or with an aluminum head and stainless steel mounting plate.

Accessories for 12mm Sensors					
Part Number	Price	Description	Mounting Head	Mounting Plate	Weight [lb]
<b>OPT2114</b>	\$9.00	Mounting bracket, right-angle swivel, 360 vertical and horizontal adjustment, aluminum, 12mm rod mount. For use with 12mm sensors.	Aluminum	Stainless Steel	0.14
<b>OPT2115</b>	\$16.00	Mounting bracket, right-angle swivel, 360 vertical and horizontal adjustment, 304 stainless steel, 12mm rod mount. For use with 12mm sensors.	304 Stainless Steel	304 Stainless Steel	0.27

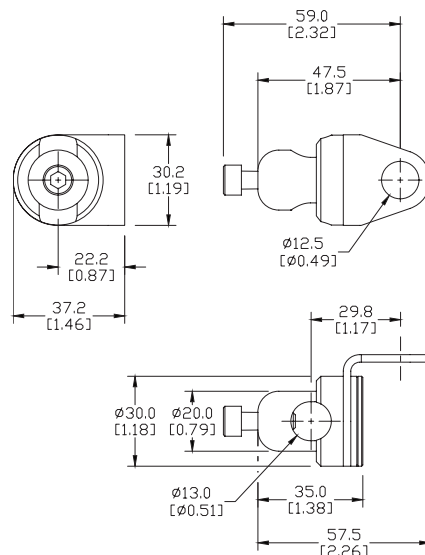
**Note: 304 Stainless steel mounting rods sold separately: OPT2109 (200mm length), OPT2110 (300mm length), and OPT2111 (500mm length).**



**OPT2114, OPT2115**

## Dimensions

mm [inches]



See our website: [www.AutomationDirect.com](http://www.AutomationDirect.com) for complete engineering drawings

# Mounting Rods

## Mounting Rods

304 Stainless steel rods for mounting swivel brackets OPT2112 - OPT2127. Available in three lengths: 200mm, 300mm, and 500mm. 12mm diameter.

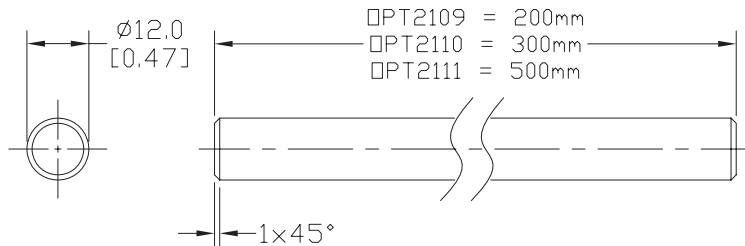
Mounting Rods for OPT2112-2127 Swivel Mounting Brackets			
Part Number	Price	Description	Weight [lb]
<b>OPT2109</b>	\$10.00	Mounting rod, 12mm diameter, 200mm length, 304 stainless steel.	0.41
<b>OPT2110</b>	\$12.00	Mounting rod, 12mm diameter, 300mm length, 304 stainless steel.	0.60
<b>OPT2111</b>	\$16.00	Mounting rod, 12mm diameter, 500mm length, 304 stainless steel.	0.98



**OPT2109, OPT2110, OPT2111**

## Dimensions

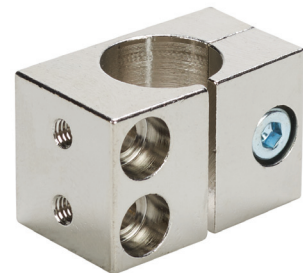
mm [inches]



## Right-angle Mounting Bracket

Mounting bracket, right-angle, nickel-plated brass. For use with 12mm mounting rods OPT2109, OPT2110 & OPT2111.

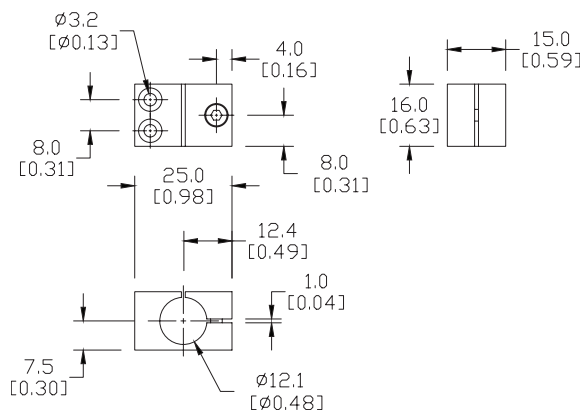
Accessories for 12mm Sensors			
Part Number	Price	Description	Weight [lb]
<b>OPT2108</b>	\$12.00	Mounting bracket, right-angle, nickel-plated brass. For use with 12mm mounting rods OPT2109, OPT2110 & OPT2111.	0.07



**OPT2108**

## Dimensions

mm [inches]



See our website: [www.AutomationDirect.com](http://www.AutomationDirect.com) for complete engineering drawings