

proense® 8-Pin Octal Socket



70169-D



750-2C-SKT

Features

- 600VAC (Plug-in 3-phase monitor relays require a 600VAC-rated socket when used with system voltages greater than 300VAC)
- Mounts on 35mm DIN rail
- Screw clamp wire termination

Agency Approvals

- cURus, File number E191059
- UL Listed, File number E191059
- CE



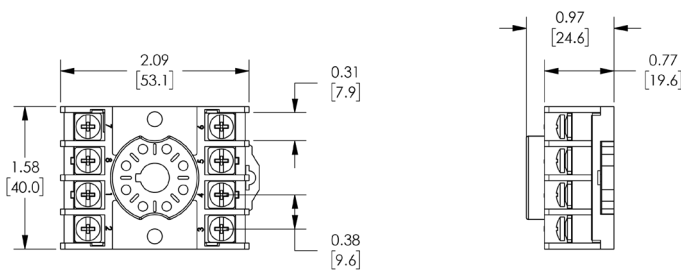
Octal Sockets for Motor Monitor Relays				
Part Number	Price	Description	Pcs/Pkg	Wt (lb)
70169-D	\$4.00	Relay socket, works with all phase monitor relays, 10A at 600V rated, 8-pin octal configuration. Can be mounted on 35mm DIN rail or directly mounted to the panel.	1	0.1
750-2C-SKT	\$4.25	Relay socket, works with all phase monitor relays, 5A at 600V rated, 8-pin octal configuration. Can be mounted on 35mm DIN rail or directly mounted to the panel.	1	0.1

Octal Sockets for Motor Monitor Relays						
Part Number	Voltage	Current	Screw Size	Wire Size (capacity)	Screw Torque	Screw Chassis Mounting Torque
70169-D	600V	10A	6-32	1 or 2, 12-22 AWG	12 lb-in	7 lb-in
750-2C-SKT	600V	5A	M3.5	1 -12 AWG / 1 -14 AWG	9 lb-in	7 lb-in

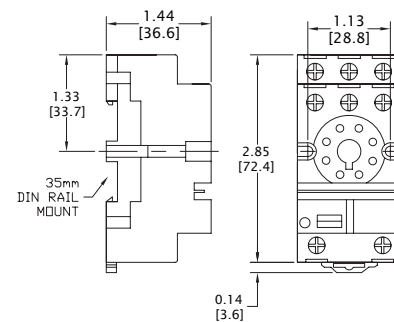
Dimensions

Inches [mm]

70169-D

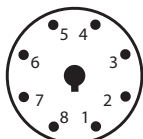


750-2C-SKT



Socket Pinouts

70169-D



750-2C-SKT

