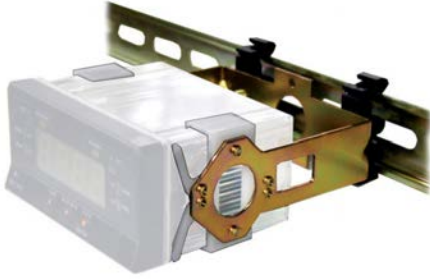
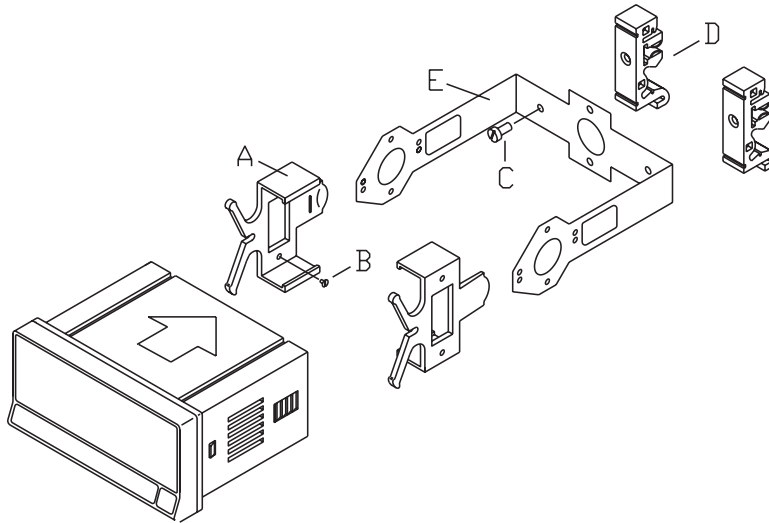


pro^{ense}® Digital Panel Meter Accessories



| Panel Meter Accessories | | | |
|-------------------------|--|--------------|---------|
| Model | Description | Weight (lbs) | Price |
| DPM-BKT1 | ProSense panel mount bracket, for use with DPM2 and DPM3 series 1/8 DIN digital panel meters. Hardware included. | 0.3 | \$20.00 |



The DPM-BKT1 kit includes:

- A. 2 mounting clips.
- B. 4 screws M3 x 6 DIN 963 to attach the clips to the inside of the arms of part E.
- C. 2 screws M4 x 8 DIN 84 to attach DIN rail clips to part E.
- D. 2 DIN rail clips (DIN rail EN50022 or EN50035).
- E. 1 metal bracket.

(Panel Meter not included)

Insert



Scan or click the above QR code
to be taken to the DPM-BKT1
Insert

See our website www.AutomationDirect.com for complete Engineering drawings.