

Precision Ground Rotary Shafts

303 Stainless Steel



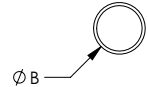
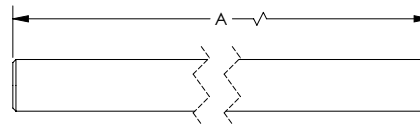
Features

- RB75-90 Hardness
- 10RMS Surface Finish
- Straightness: up to 1/4" diameter: 0.0004 in/in
over 1/4" diameter: 0.0006 in/in
- 45° chamfer on both ends on diameters 0.1875" and over;
rough cut on 0.125" diameter
- ± 0.010" length tolerance
+ 0.0000" / - 0.0002" diameter tolerance on 1/2" and smaller diameters
+ 0.0000" / - 0.0004" diameter tolerance on 5/8" and larger diameters

Rotary Shafts - 303 Stainless Steel				
Part Number	A	ØB	Price	Weight (lb)
RPSS02-3	3.0	0.125	\$2.50	0.02
RPSS02-6	6.0	0.125	\$3.75	0.03
RPSS02-12	12.0	0.125	\$5.75	0.08
RPSS02-24	24.0	0.125	\$11.50	1.15
RPSS02-36	36.0	0.125	\$15.50	1.41
RPSS03-3	3.0	0.1875	\$2.75	0.03
RPSS03-6	6.0	0.1875	\$4.50	0.06
RPSS03-12	12.0	0.1875	\$7.00	0.12
RPSS03-24	24.0	0.1875	\$12.50	1.23
RPSS03-36	36.0	0.1875	\$16.50	1.64
RPSS04-3	3.0	0.25	\$3.25	0.04
RPSS04-6	6.0	0.25	\$4.75	0.08
RPSS04-12	12.0	0.25	\$7.50	0.16
RPSS04-24	24.0	0.25	\$15.00	1.31
RPSS04-36	36.0	0.25	\$22.50	1.76
RPSS06-12	12.0	0.375	\$20.50	0.38
RPSS06-24	24.0	0.375	\$34.00	1.75
RPSS06-36	36.0	0.375	\$47.00	2.42
RPSS08-12	12.0	0.50	\$25.50	0.71
RPSS08-24	24.0	0.50	\$44.00	2.41
RPSS08-36	36.0	0.50	\$58.00	3.41
RPSS10-12	12.0	0.625	\$42.00	1.04
RPSS10-24	24.0	0.625	\$80.00	3.07
RPSS10-36	36.0	0.625	\$116.00	4.40
RPSS12-12	12.0	0.75	\$45.00	1.52
RPSS12-18	18.0	0.75	\$70.00	3.13
RPSS12-24	24.0	0.75	\$91.00	4.03
RPSS12-36	36.0	0.75	\$137.00	5.84
RPSS16-12	12.0	1.00	\$77.00	2.71
RPSS16-18	18.0	1.00	\$115.00	4.92
RPSS16-24	24.0	1.00	\$154.00	6.41
RPSS16-36	36.0	1.00	\$230.00	9.41
RPSS20-12	12.0	1.25	\$99.00	4.22
RPSS20-18	18.0	1.25	\$141.00	7.18
RPSS20-24	24.0	1.25	\$197.00	9.43
RPSS20-36	36.0	1.25	\$271.00	13.94

Note: All measurements in inches

Dimensions



See our website www.AutomationDirect.com for complete Engineering drawings.