



Precision Ground Linear Shafts

1060 Steel and 440C Stainless Steel



Features

- C1060 steel
- RC60-65 Hardness
- 10RMS Surface Finish
- Tolerance: Class L
± 1/32" length tolerance
+ 0.0000" / - 0.0005" diameter tolerance



Features

- 440C Stainless steel
- RC50-55 Hardness
- 10RMS Surface Finish
- Tolerance: Class L
± 1/32" length tolerance
+ 0.0000" / - 0.0005" diameter tolerance



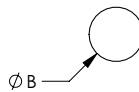
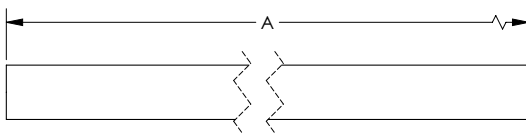
Linear Shafts - 1060 Steel				
Part Number	A	ØB	Price	Weight (lb)
LPCS08-12	12.0	0.50	\$8.00	0.71
LPCS08-24	24.0	0.50	\$17.50	2.41
LPCS08-36	36.0	0.50	\$25.00	3.41
LPCS12-12	12.0	0.75	\$12.00	1.52
LPCS12-24	24.0	0.75	\$23.50	4.03
LPCS12-36	36.0	0.75	\$33.50	5.84
LPCS16-12	12.0	1.0	\$17.50	2.71
LPCS16-24	24.0	1.0	\$33.50	6.41
LPCS16-36	36.0	1.0	\$45.50	9.41

Note: All measurements in inches

Linear Shafts - 440C Stainless Steel				
Part Number	A	ØB	Price	Weight (lb)
LPSS08-12	12.0	0.50	\$21.50	0.71
LPSS08-24	24.0	0.50	\$42.50	2.41
LPSS08-36	36.0	0.50	\$64.00	3.41
LPSS12-12	12.0	0.75	\$30.00	1.52
LPSS12-24	24.0	0.75	\$60.00	4.03
LPSS12-36	36.0	0.75	\$91.00	5.84
LPSS16-12	12.0	1.0	\$42.50	2.71
LPSS16-24	24.0	1.0	\$85.00	6.41
LPSS16-36	36.0	1.0	\$128.00	9.41

Note: All measurements in inches

Dimensions



See our website www.AutomationDirect.com for complete Engineering drawings.