



# Pneumatic Pushbuttons, 22mm Mushroom

Mushroom pushbutton operator (40mm & 60mm diameter actuator)



**ECP3131**



**ECP3133**

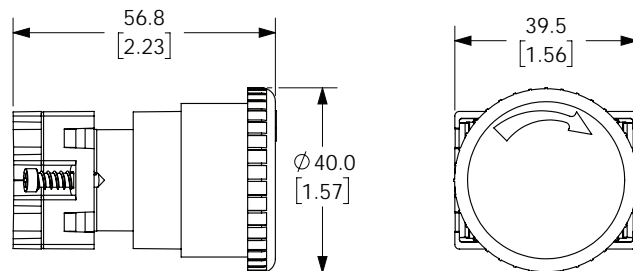


**ECP3138**

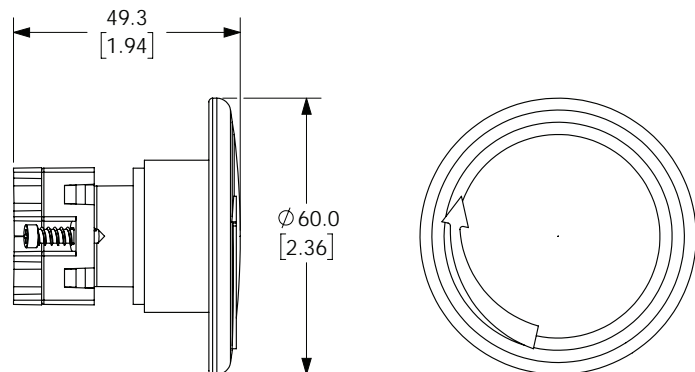
Part Number	Color	Description	Weight (lbs)	Price
<b>ECP3131</b>	Red	NITRA pneumatic pushbutton, IP65, 22mm, twist-to-release, emergency stop, plastic base, plastic bezel, black, operator only, Operator: red, mushroom, 40mm, round, plastic.	0.1	\$6.50
<b>ECP3132</b>	Black	NITRA pneumatic pushbutton, IP65, 22mm, twist-to-release, plastic base, plastic bezel, black, operator only, Operator: black, mushroom, 60mm, round, plastic.	0.1	\$8.75
<b>ECP3133</b>	Black	NITRA pneumatic pushbutton, IP65, 22mm, momentary, plastic base, plastic bezel, black, operator only, Operator: black, mushroom, 60mm, round, plastic.	0.1	\$10.00
<b>ECP3134</b>	Black	NITRA pneumatic pushbutton, IP65, 22mm, momentary, plastic base, plastic bezel, black, operator only, Operator: black, mushroom, 40mm, round, plastic.	0.1	\$5.25
<b>ECP3135</b>	Red	NITRA pneumatic pushbutton, IP65, 22mm, momentary, plastic base, plastic bezel, black, operator only, Operator: red, mushroom, 40mm, round, plastic.	0.1	\$5.25
<b>ECP3136</b>	Red	NITRA pneumatic pushbutton, IP65, 22mm, twist-to-release, emergency stop, plastic base, plastic bezel, black, operator only, Operator: red, mushroom, 60mm, round, plastic.	0.1	\$8.25
<b>ECP3137</b>	Red	NITRA pneumatic pushbutton, IP65, 22mm, momentary, plastic base, plastic bezel, black, operator only, Operator: red, mushroom, 60mm, round, plastic.	0.1	\$7.00
<b>ECP3138</b>	Yellow	NITRA pneumatic pushbutton, IP65, 22mm, twist-to-release, plastic base, plastic bezel, black, operator only, Operator: yellow, mushroom, 60mm, round, plastic.	0.1	\$8.75
<b>ECP3139</b>	Yellow	NITRA pneumatic pushbutton, IP65, 22mm, momentary, plastic base, plastic bezel, black, operator only, Operator: yellow, mushroom, 40mm, round, plastic.	0.1	\$5.25

## Dimensions mm [inches]

### 40mm Versions



### 60mm Versions



See our website [www.AutomationDirect.com](http://www.AutomationDirect.com) for complete Engineering drawings.



# Pneumatic Key Selector Switches, 22mm

## Key selector switches



ECP3420



ECP3470

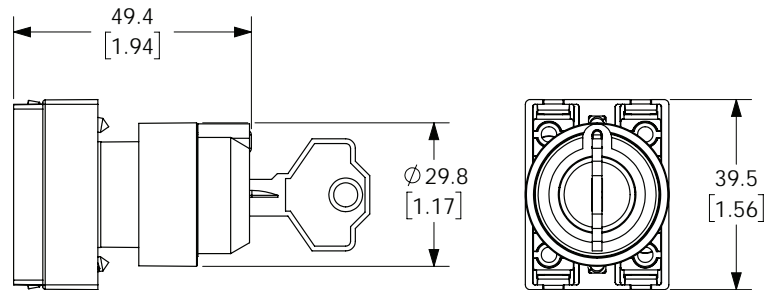
Part Number	Color	Description	Weight (lbs)	Price
ECP3420	Black	NITRA pneumatic selector switch, IP65, 22mm, 2-position, maintained, key removable in all positions, plastic base, plastic bezel, operator only, Operator: black, key, 30mm, round, plastic.	0.17	\$11.00
ECP3430	Black	NITRA pneumatic selector switch, IP65, 22mm, 2-position, spring return from right, key removable left position, plastic base, plastic bezel, operator only, Operator: black, key, 30mm, round, plastic.	0.17	\$11.00
ECP3470	Black	NITRA pneumatic selector switch, IP65, 22mm, 3-position, maintained, key removable in all positions, plastic base, plastic bezel, operator only, Operator: black, key, 30mm, round, plastic.	0.17	\$10.00



*Note: Keyed switches come with two keys. All plastic 22mm keyed switches are keyed the same. Replacement keys are available. Order part no. ECX1067-2 (pkg. of 2). Keys for plastic 22mm keyed switches are not compatible with Cutler-Hammer key switches.*

### Dimensions

mm [inches]



## Pneumatic switch accessory - support base with adapters

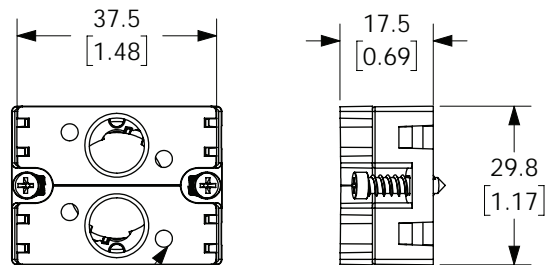


ECP3029-02

Part Number	Description	Weight (lbs)	Price
ECP3029-02	NITRA valve adapter block, replacement, plastic. For use with ECP series pneumatic pushbuttons.	0.03	\$1.00

### Dimensions

mm [inches]



M3 THRU HOLE SCREWS INCLUDED

*Note: base sold as three piece kit.*

See our website [www.AutomationDirect.com](http://www.AutomationDirect.com) for complete Engineering drawings.



# Pneumatic Pushbuttons, 22mm

NITRA® pneumatic pushbuttons are all plastic and come with adapters to allow mounting of up to two 3-way valves, or one valve and one to three contact blocks. They fit in a standard 22.5mm hole, just like electrical pushbuttons.

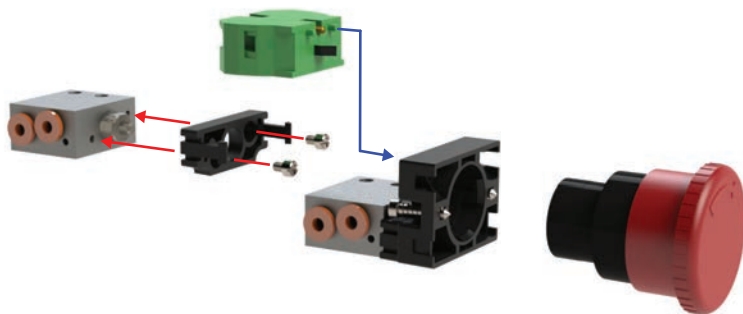
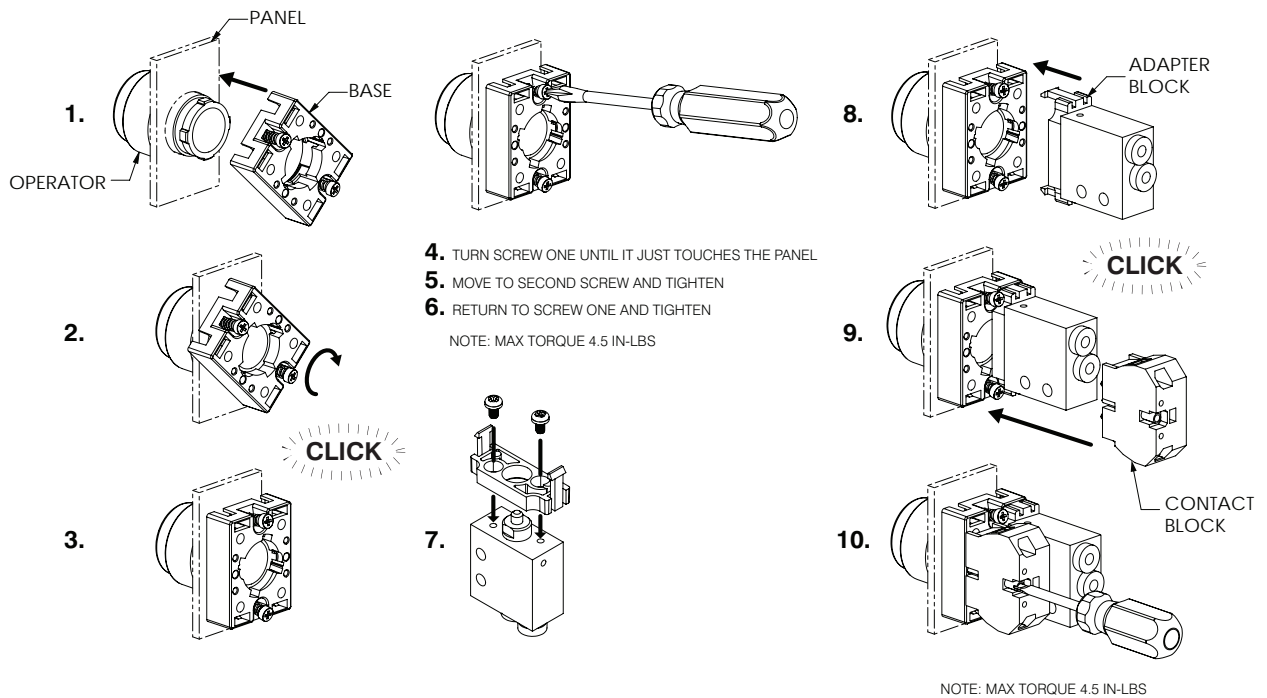
## Features

- Plastic bezel and button
- Valve adapters and mounting screws included
- Valves sold separately
- Bases will work with GCX plastic operators and **only** the three ECX Series contact blocks shown below



Pushbutton Specifications	
<b>Operating Temperature</b>	-13 to 158°F (-25 to +70°C)
<b>Storage Temperature</b>	-40 to 176°F (-40 to +80°C)
<b>Mechanical Life</b>	1,000,000 cycles
<b>Switching Cycles</b>	3600 cycles/hr
<b>Mounting (Valve)</b>	(4) M3x5 valve mounting screws included
<b>Protection</b>	IP65 after installation
<b>Approvals</b>	CE

## Adapter Block Installation



ECX1040-2



ECX1042-2



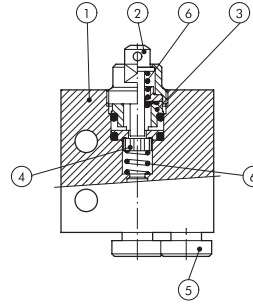
ECX1030-2



# Pneumatic Manual Valves

## Pneumatic Manual Valve Materials

1. Aluminum valve body
2. Chemically nickel-plated brass button
3. Brass distance plates
4. NBR gaskets
5. Stainless steel, brass and plastic push-to-connect cartridges
6. Stainless steel springs



## Pneumatic Metal Plunger Valves

These pneumatic valves are used with Nitra pneumatic pushbuttons and switches

### Features

- Available in normally open or normally closed
- 5/32" [4mm] push-to-connect ports located on side or end

### Valve Symbols

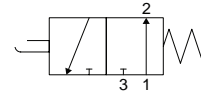


Diagram "A"

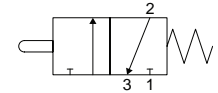


Diagram "B"



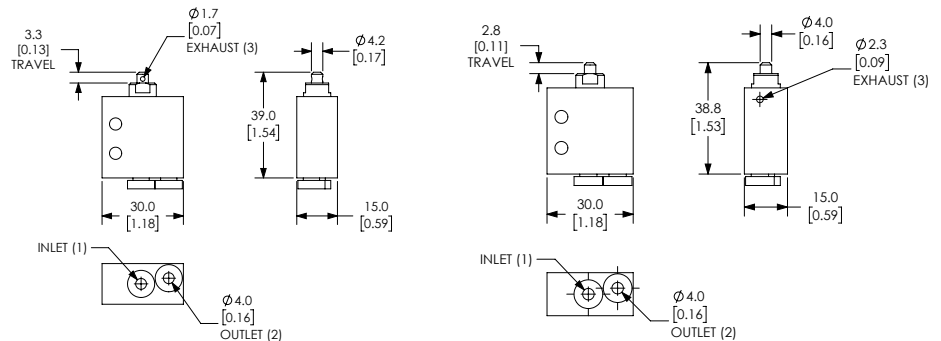
EVP-CA-PL



EVP-CS-PL

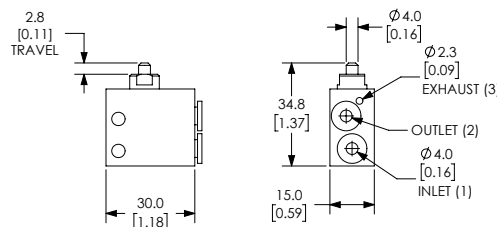
Specifications				
<b>Models</b>	<i>EVP-CA-PL</i>	<i>EVP-AA-PL</i>	<i>EVP-CS-PL</i>	<i>EVP-AS-PL</i>
<b>Price</b>	\$19.00	\$21.00	\$17.50	\$19.00
<b>Weight (lbs)</b>	0.1	0.1	0.1	0.1
<b>Valve Type</b>	2-port (3-way) 2-position			
<b>Acting</b>	Metal plunger, normally closed, spring return	Metal plunger, normally open, spring return	Metal plunger, normally closed, spring return	Metal plunger, normally open, spring return
<b>Diagram</b>	B	A	B	A
<b>Port Size</b>	Axial ports 5/32in (4mm)		Side ports 5/32in (4mm)	
<b>Flow (Cv)</b>	0.13	0.13	0.13	0.13
<b>Fluid</b>	Air (to be filtered by 40µ filter element)			
<b>Min. / Max. Pressure</b>	7.25 to 145 psi (0.5 to 10 bar)			
<b>Temperature</b>	14°F to 140°F (-10°C to 60°C)			
<b>Lubrication</b>	Not Required			
<b>Body</b>	Aluminum			
<b>Protection</b>	IP65			

## Dimensions mm [inches]



EVP-CA-PL

EVP-AA-PL



EVP-CS-PL / EVP-AS-PL

See our website [www.AutomationDirect.com](http://www.AutomationDirect.com) for complete Engineering drawings.