



# Pneumatic Manual Valves

## Pneumatic Metal Plunger Valves for thru-panel mounting

### Features

- These valves function as pneumatic limit switches
- Available in normally closed
- 5/32" [4mm] push-to-connect ports located on side or end
- Fits 1/2" diameter hole in panel



EVP-CA-PL-PNL



EVP-CS-PL-PNL

### Valve Symbol

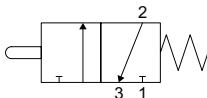
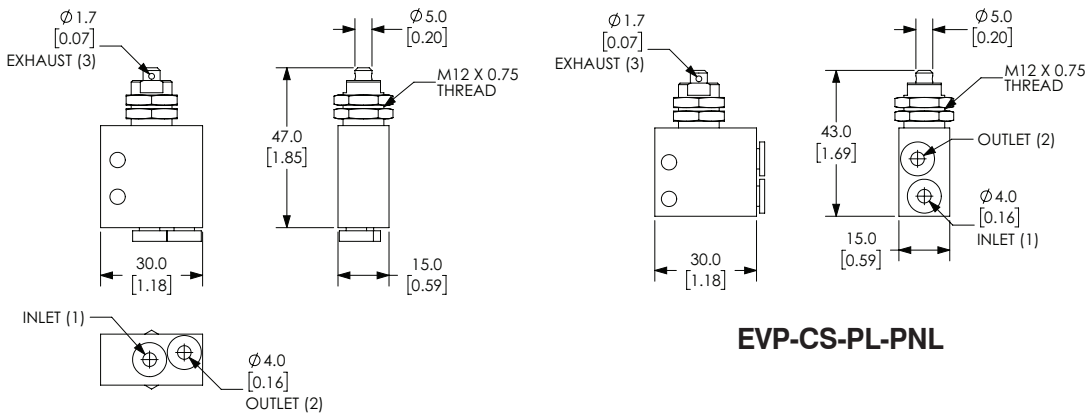


Diagram "B"

Specifications		
<b>Model</b>	<b>EVP-CA-PL-PNL</b>	<b>EVP-CS-PL-PNL</b>
<b>Price</b>	\$19.00	\$17.00
<b>Weight (lbs)</b>	0.1	0.1
<b>Valve Type</b>	2-port (3-way) 2-position	
<b>Acting</b>	Metal plunger, normally closed, spring return, through panel mount	Metal plunger, normally closed, spring return, through panel mount
<b>Diagram</b>	B	B
<b>Port Size</b>	Axial ports 5/32in (4mm)	Side ports 5/32in (4mm)
<b>Flow (Cv)</b>	0.13	0.13
<b>Fluid</b>	Air (to be filtered by 40µ filter element)	
<b>Min. / Max. Pressure</b>	7.25 to 145 psi (0.5 to 10 bar)	
<b>Temperature</b>	14°F to 140°F (-10°C to 60°C)	
<b>Lubrication</b>	Not Required	
<b>Body</b>	Aluminum	
<b>Protection</b>	IP65	

### Dimensions mm [inches]



EVP-CA-PL-PNL

EVP-CS-PL-PNL

See our website [www.AutomationDirect.com](http://www.AutomationDirect.com) for complete Engineering drawings.