



Pneumatic Manual Valves

Pneumatic Metal Plunger Valves with one-way metal roller

Features

- These valves function as pneumatic limit switches
- Available in normally closed
- 5/32" [4mm] push-to-connect ports located on side or end



EVP-CA-T



EVP-CS-T

Valve Symbol

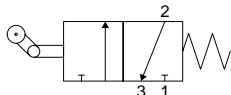
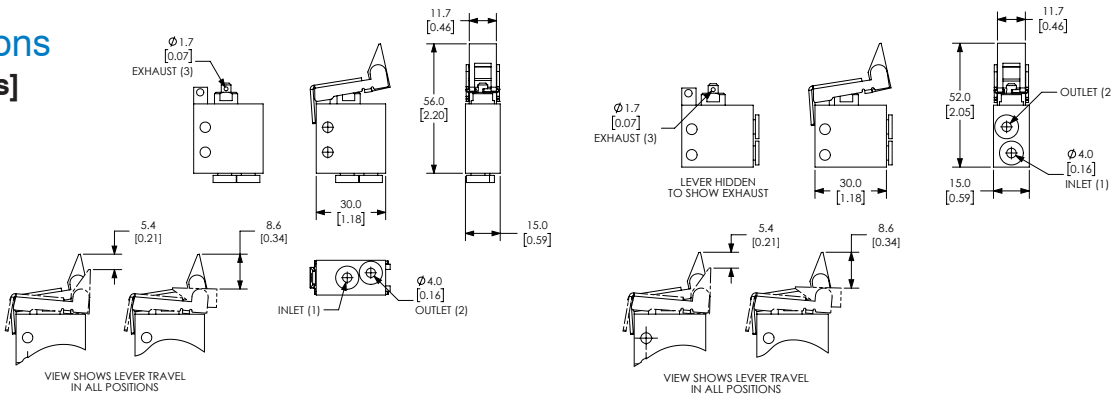


Diagram "E"

Specifications		
Models	EVP-CA-T	EVP-CS-T
Price	\$23.50	\$21.50
Weight (lbs)	0.1	0.1
Valve Type	2-port (3-way) 2-position	
Acting	Metal plunger with one-way metal roller, normally closed, spring return	Metal plunger with one-way metal roller, normally closed, spring return
Diagram	E	E
Port Size	Axial ports 5/32in (4mm)	Side ports 5/32in (4mm)
Flow (Cv)	0.13	0.13
Fluid	Air (to be filtered by 40µ filter element)	
Min. / Max. Pressure	7.25 to 145 psi (0.5 to 10 bar)	
Temperature	14°F to 140°F (-10°C to 60°C)	
Lubrication	Not Required	
Body	Aluminum	
Protection	IP65	

Dimensions mm [inches]



EVP-CA-T

EVP-CS-T

See our website www.AutomationDirect.com for complete Engineering drawings.