

GCX Series 22mm Plastic Illuminated Pushbuttons

Momentary pushbuttons with protective plastic ring

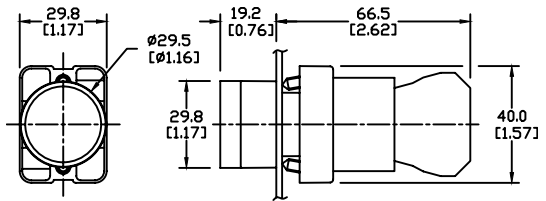
24 models available:

- Protective plastic ring for flush mount pushbutton functionality
- Includes incandescent bulb or LED lamp
- 24V and 120V models
- Available in six colors



GCX3202-24

Dimensions: mm [inches]



All pushbuttons include operator, support base, indicating bulb, and contact block. They are shipped unassembled. Legend plate is not included and must be ordered separately. All switches in this series use replacement contact block ECX1030 (Red, N.C.) or ECX1040 (Green, N.O.), sold separately in packages of two or five.

Part Number	Lamp Color	Price	Description	Replacement Incandescent Bulb	Replacement LED Lamp
Incandescent					
GCX3201-24	Red	\$9.50	22mm plastic incandescent illuminated pushbutton, 24VDC/VAC. One N.C. contact block	ECX1902-5 5/pk, 80mA	ECX1911-2 2/pk, 26mA
GCX3201-120	Red	\$10.50	22mm plastic incandescent illuminated pushbutton, 120VDC/VAC. One N.C. contact block	ECX1904-5 5/pk, 20mA	ECX1921-2 2/pk, 5mA
GCX3202-24	Green	\$9.50	22mm plastic incandescent illuminated pushbutton, 24VDC/VAC. One N.O. contact block	ECX1902-5 5/pk, 80mA	ECX1912-2 2/pk, 26mA
GCX3202-120	Green	\$10.50	22mm plastic incandescent illuminated pushbutton, 120VDC/VAC. One N.O. contact block	ECX1904-5 5/pk, 20mA	ECX1922-2 2/pk, 5mA
GCX3203-24	Yellow	\$9.50	22mm plastic incandescent illuminated pushbutton, 24VDC/VAC. One N.O. contact block	ECX1902-5 5/pk, 80mA	ECX1913-2 2/pk, 26mA
GCX3203-120	Yellow	\$10.50	22mm plastic incandescent illuminated pushbutton, 120VDC/VAC. One N.O. contact block	ECX1904-5 5/pk, 20mA	ECX1923-2 2/pk, 5mA
GCX3204-24	Blue	\$9.50	22mm plastic incandescent illuminated pushbutton, 24VDC/VAC. One N.O. contact block	ECX1902-5 5/pk, 80mA	ECX1914-2 2/pk, 26mA
GCX3204-120	Blue	\$10.50	22mm plastic incandescent illuminated pushbutton, 120VDC/VAC. One N.O. contact block	ECX1904-5 5/pk, 20mA	ECX1924-2 2/pk, 5mA
GCX3205-24	Clear	\$9.50	22mm plastic incandescent illuminated pushbutton, 24VDC/VAC. One N.O. contact block	ECX1902-5 5/pk, 80mA	ECX1915-2 2/pk, 26mA
GCX3205-120	Clear	\$10.50	22mm plastic incandescent illuminated pushbutton, 120VDC/VAC. One N.O. contact block	ECX1904-5 5/pk, 20mA	ECX1925-2 2/pk, 5mA
GCX3206-24	White	\$9.50	22mm plastic incandescent illuminated pushbutton, 24VDC/VAC. One N.O. contact block	ECX1902-5 5/pk, 80mA	ECX1915-2 2/pk, 26mA
GCX3206-120	White	\$10.50	22mm plastic incandescent illuminated pushbutton, 120VDC/VAC. One N.O. contact block	ECX1904-5 5/pk, 20mA	ECX1925-2 2/pk, 5mA
LED					
GCX3201-24L	Red	\$14.00	22mm plastic LED illuminated pushbutton, 24 VDC/VAC. One N.C. contact block	ECX1902-5 5/pk, 80mA	ECX1911-2 2/pk, 26mA
GCX3201-120L	Red	\$15.00	22mm plastic LED illuminated pushbutton, 120 VDC/VAC. One N.C. contact block	ECX1904-5 5/pk, 20mA	ECX1921-2 2/pk, 5mA
GCX3202-24L	Green	\$17.00	22mm plastic LED illuminated pushbutton, 24 VDC/VAC. One N.O. contact block	ECX1902-5 5/pk, 80mA	ECX1912-2 2/pk, 26mA
GCX3202-120L	Green	\$17.00	22mm plastic LED illuminated pushbutton, 120 VDC/VAC. One N.O. contact block	ECX1904-5 5/pk, 20mA	ECX1922-2 2/pk, 5mA
GCX3203-24L	Yellow	\$14.00	22mm plastic LED illuminated pushbutton, 24 VDC/VAC. One N.O. contact block	ECX1902-5 5/pk, 80mA	ECX1913-2 2/pk, 26mA
GCX3203-120L	Yellow	\$15.00	22mm plastic LED illuminated pushbutton, 120 VDC/VAC. One N.O. contact block	ECX1904-5 5/pk, 20mA	ECX1923-2 2/pk, 5mA
GCX3204-24L	Blue	\$17.00	22mm plastic LED illuminated pushbutton, 24 VDC/VAC. One N.O. contact block	ECX1902-5 5/pk, 80mA	ECX1914-2 2/pk, 26mA
GCX3204-120L	Blue	\$17.00	22mm plastic LED illuminated pushbutton, 120 VDC/VAC. One N.O. contact block	ECX1904-5 5/pk, 20mA	ECX1924-2 2/pk, 5mA
GCX3205-24L	Clear	\$18.00	22mm plastic LED illuminated pushbutton, 24 VDC/VAC. One N.O. contact block	ECX1902-5 5/pk, 80mA	ECX1915-2 2/pk, 26mA
GCX3205-120L	Clear	\$18.50	22mm plastic LED illuminated pushbutton, 120 VDC/VAC. One N.O. contact block	ECX1904-5 5/pk, 20mA	ECX1925-2 2/pk, 5mA
GCX3206-24L	White	\$18.00	22mm plastic LED illuminated pushbutton, 24 VDC/VAC. One N.O. contact block	ECX1902-5 5/pk, 80mA	ECX1915-2 2/pk, 26mA
GCX3206-120L	White	\$18.50	22mm plastic LED illuminated pushbutton, 120 VDC/VAC. One N.O. contact block	ECX1904-5 5/pk, 20mA	ECX1925-2 2/pk, 5mA

For accessories, see 22mm Plastic Pilot Device Accessories in this section.

GCX Series 22mm Plastic Illuminated Pushbuttons

Momentary pushbuttons with extended actuator

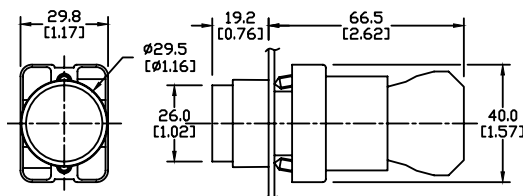
24 models available:

- Illuminated pushbuttons and indicators come complete with bulbs.
- Includes incandescent bulb or LED lamp
- 24V and 120V models
- Available in six colors



GCX3214-120

Dimensions: mm [inches]



All pushbuttons include operator, support base, indicating bulb, and contact block. They are shipped unassembled. Legend plate is not included and must be ordered separately. All switches in this series use replacement contact block ECX1030 (Red, N.C.) or ECX1040 (Green, N.O.), sold separately in packages of two or five.

For accessories, see 22mm Plastic Pilot Device Accessories in this section.

Part Number	Lamp Color	Price	Description	Replacement Incandescent Bulb	Replacement LED Lamp
Incandescent					
GCX3211-24	Red	\$9.25	22mm plastic extended incandescent illuminated pushbutton, 24VDC/VAC. One N.C. contact block	ECX1902-5 5/pk 80mA	ECX1911-2 2/pk, 26mA
GCX3211-120	Red	\$10.00	22mm plastic extended incandescent illuminated pushbutton, 120VDC/VAC. One N.C. contact block	ECX1904-5 5/pk 20mA	ECX1921-2 2/pk, 5mA
GCX3212-24	Green	\$9.25	22mm plastic extended incandescent illuminated pushbutton, 24VDC/VAC. One N.O. contact block	ECX1902-5 5/pk 80mA	ECX1912-2 2/pk, 26mA
GCX3212-120	Green	\$10.00	22mm plastic extended incandescent illuminated pushbutton, 120VDC/VAC. One N.O. contact block	ECX1904-5 5/pk 20mA	ECX1922-2, 2/pk, 5mA
GCX3213-24	Yellow	\$9.25	22mm plastic extended incandescent illuminated pushbutton, 24VDC/VAC. One N.O. contact block	ECX1902-5 5/pk 80mA	ECX1913-2 2/pk, 26mA
GCX3213-120	Yellow	\$10.00	22mm plastic extended incandescent illuminated pushbutton, 120VDC/VAC. One N.O. contact block	ECX1904-5 5/pk 20mA	ECX1923-2 2/pk, 5mA
GCX3214-24	Blue	\$9.25	22mm plastic extended incandescent illuminated pushbutton, 24VDC/VAC. One N.O. contact block	ECX1902-5 5/pk 80mA	ECX1914-2 2/pk, 26mA
GCX3214-120	Blue	\$10.00	22mm plastic extended incandescent illuminated pushbutton, 120VDC/VAC. One N.O. contact block	ECX1904-5 5/pk 20mA	ECX1924-2 2/pk, 5mA
GCX3215-24	Clear	\$9.25	22mm plastic extended incandescent illuminated pushbutton, 24VDC/VAC. One N.O. contact block	ECX1902-5 5/pk 80mA	ECX1915-2 2/pk, 26mA
GCX3215-120	Clear	\$10.00	22mm plastic extended incandescent illuminated pushbutton, 120VDC/VAC. One N.O. contact block	ECX1904-5 5/pk 20mA	ECX1925-2 2/pk, 5mA
GCX3216-24	White	\$9.25	22mm plastic extended incandescent illuminated pushbutton, 24VDC/VAC. One N.O. contact block	ECX1902-5 5/pk 80mA	ECX1915-2 2/pk, 26mA
GCX3216-120	White	\$10.00	22mm plastic extended incandescent illuminated pushbutton, 120VDC/VAC. One N.O. contact block	ECX1904-5 5/pk 20mA	ECX1925-2 2/pk, 5mA
LED					
GCX3211-24L	Red	\$14.00	22mm plastic extended LED illuminated pushbutton, 24VDC/VAC. One N.C. contact block	ECX1902-5 5/pk 80mA	ECX1911-2 2/pk, 26mA
GCX3211-120L	Red	\$15.00	22mm plastic extended LED illuminated pushbutton, 120VDC/VAC. One N.C. contact block	ECX1904-5 5/pk 20mA	ECX1921-2, 2/pk, 5mA
GCX3212-24L	Green	\$17.50	22mm plastic extended LED illuminated pushbutton, 24VDC/VAC. One N.O. contact block	ECX1902-5 5/pk 80mA	ECX1912-2 2/pk, 26mA
GCX3212-120L	Green	\$17.00	22mm plastic extended LED illuminated pushbutton, 120VDC/VAC. One N.O. contact block	ECX1904-5 5/pk 20mA	ECX1922-2 2/pk, 5mA
GCX3213-24L	Yellow	\$14.00	22mm plastic extended LED illuminated pushbutton, 24VDC/VAC. One N.O. contact block	ECX1902-5 5/pk 80mA	ECX1913-2 2/pk, 26mA
GCX3213-120L	Yellow	\$15.00	22mm plastic extended LED illuminated pushbutton, 120VDC/VAC. One N.O. contact block	ECX1904-5 5/pk 20mA	ECX1923-2 2/pk, 5mA
GCX3214-24L	Blue	\$17.50	22mm plastic extended LED illuminated pushbutton, 24VDC/VAC. One N.O. contact block	ECX1902-5 5/pk 80mA	ECX1914-2 2/pk, 26mA
GCX3214-120L	Blue	\$17.00	22mm plastic extended LED illuminated pushbutton, 120VDC/VAC. One N.O. contact block	ECX1904-5 5/pk 20mA	ECX1924-2 2/pk, 5mA
GCX3215-24L	Clear	\$19.00	22mm plastic extended LED illuminated pushbutton, 24VDC/VAC. One N.O. contact block	ECX1902-5 5/pk 80mA	ECX1915-2 2/pk, 26mA
GCX3215-120L	Clear	\$20.00	22mm plastic extended LED illuminated pushbutton, 120VDC/VAC. One N.O. contact block	ECX1904-5 5/pk 20mA	ECX1925-2 2/pk, 5mA
GCX3216-24L	White	\$19.00	22mm plastic extended LED illuminated pushbutton, 24VDC/VAC. One N.O. contact block	ECX1902-5 5/pk 80mA	ECX1915-2 2/pk, 26mA
GCX3216-120L	White	\$20.00	22mm plastic extended LED illuminated pushbutton, 120VDC/VAC. One N.O. contact block	ECX1904-5 5/pk 20mA	ECX1925-2 2/pk, 5mA

GCX Series 22mm Plastic Illuminated Pushbuttons

Push-push style pushbuttons with protective plastic ring

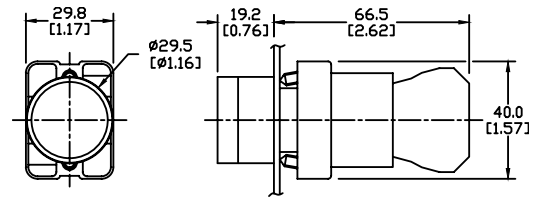
24 models available:

- Latching Push-ON, Push-OFF actuator
- Includes incandescent bulb or LED lamp
- 24V and 120V models
- Available in six colors
- These switches are supplied with a special N.O. contact block designed for use with this actuator, but they also work with standard N.C. contacts.



GCX3194-24

Dimensions: mm [inches]



All switches in this series use replacement contact block ECX1042-2 (Brown, N.O.) or ECX1030-5 or ECX1030-2 (Red, N.C.), sold separately.

Part Number	Lamp Color	Price	Description	Replacement Incandescent Bulb	Replacement LED Lamp
Incandescent					
GCX3191-24	Red	\$10.50	22mm plastic incandescent illuminated pushbutton, 24VDC/VAC. One N.O. contact block. Flush Push ON - Push OFF operator with colored plastic ring.	ECX1902-5 5/pk, 80mA	ECX1911-2 2/pk, 26mA
GCX3191-120	Red	\$11.50	22mm plastic incandescent illuminated pushbutton, 120VDC/VAC. One N.O. contact block. Flush Push ON - Push OFF operator with colored plastic ring.	ECX1904-5 5/pk, 20mA	ECX1921-2 2/pk, 5mA
GCX3192-24	Green	\$10.50	22mm plastic incandescent illuminated pushbutton, 24VDC/VAC. One N.O. contact block. Flush Push ON - Push OFF operator with colored plastic ring.	ECX1902-5 5/pk, 80mA	ECX1912-2 2/pk, 26mA
GCX3192-120	Green	\$11.50	22mm plastic incandescent illuminated pushbutton, 120VDC/VAC. One N.O. contact block. Flush Push ON - Push OFF operator with colored plastic ring.	ECX1904-5 5/pk, 20mA	ECX1922-2 2/pk, 5mA
GCX3193-24	Yellow	\$10.50	22mm plastic incandescent illuminated pushbutton, 24VDC/VAC. One N.O. contact block. Flush Push ON - Push OFF operator with colored plastic ring.	ECX1902-5 5/pk, 80mA	ECX1913-2 2/pk, 26mA
GCX3193-120	Yellow	\$11.50	22mm plastic incandescent illuminated pushbutton, 120VDC/VAC. One N.O. contact block. Flush Push ON - Push OFF operator with colored plastic ring.	ECX1904-5 5/pk, 20mA	ECX1923-2 2/pk, 5mA
GCX3194-24	Blue	\$10.50	22mm plastic incandescent illuminated pushbutton, 24VDC/VAC. One N.O. contact block. Flush Push ON - Push OFF operator with colored plastic ring.	ECX1902-5 5/pk, 80mA	ECX1914-2 2/pk, 26mA
GCX3194-120	Blue	\$11.50	22mm plastic incandescent illuminated pushbutton, 120VDC/VAC. One N.O. contact block. Flush Push ON - Push OFF operator with colored plastic ring.	ECX1904-5 5/pk, 20mA	ECX1924-2 2/pk, 5mA
GCX3195-24	Clear	\$10.50	22mm plastic incandescent illuminated pushbutton, 24VDC/VAC. One N.O. contact block. Flush Push ON - Push OFF operator with colored plastic ring.	ECX1902-5 5/pk, 80mA	ECX1915-2 2/pk, 26mA
GCX3195-120	Clear	\$11.50	22mm plastic incandescent illuminated pushbutton, 120VDC/VAC. One N.O. contact block. Flush Push ON - Push OFF operator with colored plastic ring.	ECX1904-5 5/pk, 20mA	ECX1925-2 2/pk, 5mA
GCX3196-24	White	\$10.50	22mm plastic incandescent illuminated pushbutton, 24VDC/VAC. One N.O. contact block. Flush Push ON - Push OFF operator with colored plastic ring.	ECX1902-5 5/pk, 80mA	ECX1915-2 2/pk, 26mA
GCX3196-120	White	\$11.50	22mm plastic incandescent illuminated pushbutton, 120VDC/VAC. One N.O. contact block. Flush Push ON - Push OFF operator with colored plastic ring.	ECX1904-5 5/pk, 20mA	ECX1925-2 2/pk, 5mA
LED					
GCX3191-24L	Red	\$16.50	22mm plastic LED illuminated pushbutton, 24 VDC/VAC. One N.O. contact block. Flush Push ON - Push OFF operator with colored plastic ring.	ECX1902-5 5/pk, 80mA	ECX1911-2 2/pk, 26mA
GCX3191-120L	Red	\$17.00	22mm plastic LED illuminated pushbutton, 120 VDC/VAC. One N.O. contact block. Flush Push ON - Push OFF operator with colored plastic ring.	ECX1904-5 5/pk, 20mA	ECX1921-2 2/pk, 5mA
GCX3192-24L	Green	\$19.00	22mm plastic LED illuminated pushbutton, 24 VDC/VAC. One N.O. contact block. Flush Push ON - Push OFF operator with colored plastic ring.	ECX1902-5 5/pk, 80mA	ECX1912-2 2/pk, 26mA
GCX3192-120L	Green	\$20.00	22mm plastic LED illuminated pushbutton, 120 VDC/VAC. One N.O. contact block. Flush Push ON - Push OFF operator with colored plastic ring.	ECX1904-5 5/pk, 20mA	ECX1922-2 2/pk, 5mA
GCX3193-24L	Yellow	\$16.50	22mm plastic LED illuminated pushbutton, 24 VDC/VAC. One N.O. contact block. Flush Push ON - Push OFF operator with colored plastic ring.	ECX1902-5 5/pk, 80mA	ECX1913-2 2/pk, 26mA
GCX3193-120L	Yellow	\$17.00	22mm plastic LED illuminated pushbutton, 120 VDC/VAC. One N.O. contact block. Flush Push ON - Push OFF operator with colored plastic ring.	ECX1904-5 5/pk, 20mA	ECX1923-2 2/pk, 5mA
GCX3194-24L	Blue	\$19.00	22mm plastic LED illuminated pushbutton, 24 VDC/VAC. One N.O. contact block. Flush Push ON - Push OFF operator with colored plastic ring.	ECX1902-5 5/pk, 80mA	ECX1914-2 2/pk, 26mA
GCX3194-120L	Blue	\$20.00	22mm plastic LED illuminated pushbutton, 120 VDC/VAC. One N.O. contact block. Flush Push ON - Push OFF operator with colored plastic ring.	ECX1904-5 5/pk, 20mA	ECX1924-2 2/pk, 5mA
GCX3195-24L	Clear	\$20.50	22mm plastic LED illuminated pushbutton, 24 VDC/VAC. One N.O. contact block. Flush Push ON - Push OFF operator with colored plastic ring.	ECX1902-5 5/pk, 80mA	ECX1915-2 2/pk, 26mA
GCX3195-120L	Clear	\$21.50	22mm plastic LED illuminated pushbutton, 120 VDC/VAC. One N.O. contact block. Flush Push ON - Push OFF operator with colored plastic ring.	ECX1904-5 5/pk, 20mA	ECX1925-2 2/pk, 5mA
GCX3196-24L	White	\$20.50	22mm plastic LED illuminated pushbutton, 24 VDC/VAC. One N.O. contact block. Flush Push ON - Push OFF operator with colored plastic ring.	ECX1902-5 5/pk, 80mA	ECX1915-2 2/pk, 26mA
GCX3196-120L	White	\$21.50	22mm plastic LED illuminated pushbutton, 120 VDC/VAC. One N.O. contact block. Flush Push ON - Push OFF operator with colored plastic ring.	ECX1904-5 5/pk, 20mA	ECX1925-2 2/pk, 5mA

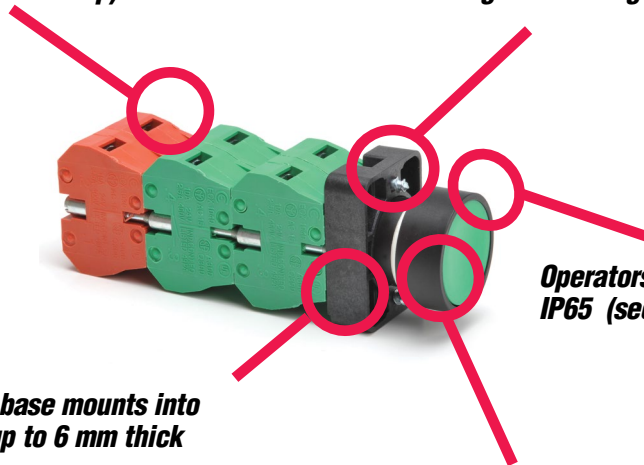
For accessories, see 22mm Plastic Pilot Device Accessories in this section.

GCX Series 22mm Plastic Pilot Devices

Features

Any combination of contact blocks is allowed, up to a total of six (two blocks wide and three blocks deep)

Secure mounting method eliminates twisting in mounting hole

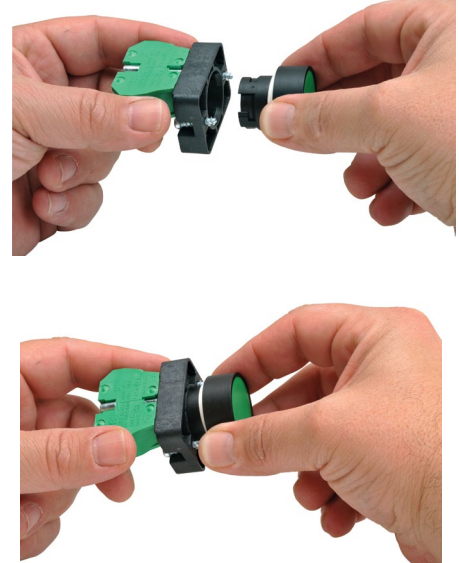
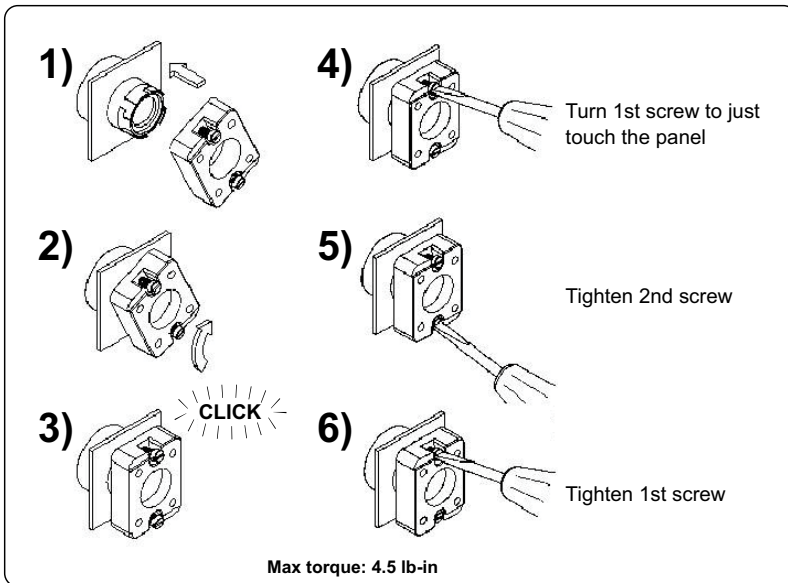


Operators are protected to IP 40 or IP65 (see specifications below)

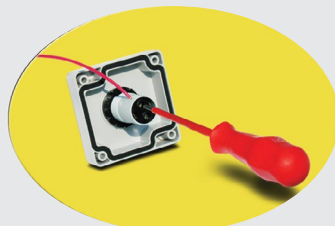
Support base mounts into panels up to 6 mm thick

Fiberglass reinforced thermoplastic bezel

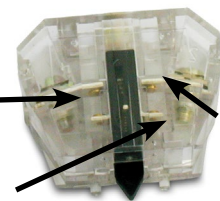
Easy installation



All indicators offer side wire entry with back screw terminals for easy wiring



Self-cleaning silver contacts provide reliable, low-energy switching



Pressure plate wiring terminals for easy, secure wiring, accepting up to 14 AWG wire

Contacts rated A300
(Refer to E22 Series mounting/contact rating section for details)

Clear contact block for illustration purposes. Clear contact blocks are not available for sale from AutomationDirect.

22mm Plastic Pilot Device Accessories

Replacement incandescent bulbs



ECX1902-5

Replacement Incandescent Bulbs				
Part Number	Quantity	Price	Rating	Description
ECX1900-5	Pkg of 5 bulbs	\$8.50	6V@ 200mA 1.2 watts	6V replacement bulb for 22mm switches and indicators. Miniature bayonet base T31/4
ECX1902-5	Pkg of 5 bulbs	\$8.50	24V@ 80mA 2 watts	24V replacement bulb for 22mm switches and indicators. Miniature bayonet base T31/4
ECX1904-5	Pkg of 5 bulbs	\$17.50	130V@20mA 2.6 watts	120V replacement bulb for 22mm switches and indicators. Miniature bayonet base T31/4

Note: Bulb removal tool available. Order part number HT8LAMP TOOL.

Replacement LED lamps



ECX1915-2

Replacement LED Lamps					
Part Number	Color	Quantity	Price	Rating	Description
ECX1911-2	Red	Pkg of 2 LED lamps	\$15.50	24V@26mA 0.6 watts	LED replacement lamp for miniature bayonet bases. Works with 22mm switches and indicators, but illumination will not be as even when used with the ECX 22mm indicators. Note: Will not replace sealed Cutler-Hammer monoblock LED indicators.
ECX1912-2	Green		\$19.50		
ECX1913-2	Yellow		\$15.50		
ECX1914-2	Blue		\$21.00		
ECX1915-2	White		\$25.00		
ECX1921-2	Red		\$15.50		
ECX1922-2	Green		\$19.50		
ECX1923-2	Yellow		\$15.50		
ECX1924-2	Blue		\$21.00		
ECX1925-2	White		\$25.00		

Note: LED modules have very low current draw and should not be used with triac output devices like PLC triac output modules. It is recommended that dry contact outputs be used to switch 120 volt AC LED modules.

Hole plug



ECX1490

Hole Plug			
Part Number	Color	Price	Description
ECX1490	Black	\$2.75	Plastic hole plug for 22.5 mm openings in panels and enclosures; supplied with O-ring and mounting screw. Two plugs per package.

Protective covers for pushbuttons



ECX1703-5

Protective Covers for Pushbuttons				
Part Number	Color	Quantity	Price	Description
ECX1700-5	Black	Pkg of 5 protective caps	\$6.50	Silicone protective covers for use with 22mm standard-size flush pushbuttons. Will not work with Cutler-Hammer pushbuttons, 22mm plastic illuminated or extended pushbuttons, or 22mm plastic pushbuttons with 40mm actuator face.
ECX1701-5	Red		\$6.50	
ECX1702-5	Green		\$6.50	
ECX1703-5	Yellow		\$6.50	
ECX1704-5	Blue		\$6.50	
ECX1705-5	Clear		\$6.50	
ECX1706-5	Clear		\$11.50	

Knockout Punches



109225

Ruko's knockout punch hole-cutting tool includes punch, die and draw bolt (without ball bearing). Use for sheet steel, stainless-steel sheets, non-ferrous and light metals, and plastics up to 0.16" (8 ga.) thick. Replacement bolts are offered in three of the most popular sizes. See the Tools section of the catalog for details.

Note: Part number 109225 is recommended when punching holes for 22mm pilot devices.

Replacement keys



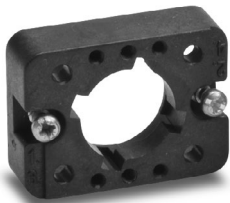
ECX1067-2

Replacement Keys			
Part Number	Quantity	Price	Description
ECX1067-2	Pkg of 2	\$5.75	Replacement key for GCX series key-actuated selector switches, pack of 2 sets (2 keys each). NOTE: Will not work with Cutler-Hammer 22mm switches.

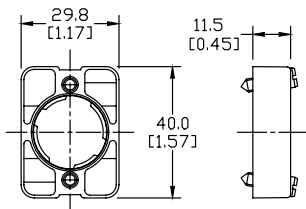
Note: All key-actuated 22mm plastic selector switches are keyed alike.

22mm Plastic Pilot Device Accessories

Replacement 22mm support base



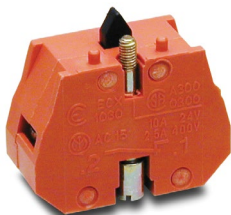
ECX3029-2



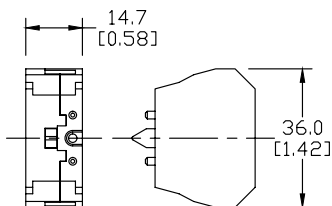
Dimensions: mm [inches]

Replacement 22mm Support Base			
Part Number	Quantity	Price	Description
ECX3029-2	Pkg of 1	\$1.75	22mm plastic support base Note: This item is supplied as a replacement part and is not required with any switch assembly. Will not work with Cutler-Hammer 22mm switches sold by AUTOMATIONDIRECT

Replacement contact blocks



ECX1030-2



Dimensions: mm [inches]

Replacement Contact Blocks				
Part Number	Quantity	Price	Contacts	Description
ECX1030-2	Pkg of 2	\$6.25	Red, normally-closed (N.C.)	Replacement contact block for 22mm pushbuttons and selector switches. Tightening Torque, terminal screw: 0.8 N-m max mounting screw: 0.5 N-m max
ECX1030-5	Pkg of 5	\$15.00		
ECX1040-2	Pkg of 2	\$6.25	Green, normally-open (N.O.)	Note: Will not work with Cutler-Hammer 22mm switches sold by AUTOMATIONDIRECT
ECX1040-5	Pkg of 5	\$15.00		
ECX1042-2	Pkg of 2	\$6.25	Brown, normally-open (N.O.), push-push	Use on lighted Push-push button only

Note: See electrical specifications on GCX Series 22mm Plastic Pilot Devices Specifications page at beginning of this section.

EMERGENCY STOP legend plate



ECX1651

EMERGENCY STOP Legend Plate			
Part Number	Quantity	Price	Description
ECX1651	pkg. of 1	\$2.75	Oversize yellow circular EMERGENCY STOP legend plate for 22mm E-stop type mushroom pushbuttons, 60mm outside diameter.

Two-position short lever operator



GR1172PR-5

Short Lever Replacement Operator				
Part Number	Lamp Color	Price	2-Position	Use with
GR1172PR-5	Red	\$14.50	22mm 2-position selector switch illuminated short lever replacement operator, 5/pkg	Part numbers starting with GCX124, GCX125, GCX324, GCX325
GR1172PV-5	Green	\$14.50	22mm 2-position selector switch illuminated short lever replacement operator, 5/pkg	
GR1172PG-5	Yellow	\$14.50	22mm 2-position selector switch illuminated short lever replacement operator, 5/pkg	
GR1172PB-5	Blue	\$14.50	22mm 2-position selector switch illuminated short lever replacement operator, 5/pkg	
GR1172PN-5	Clear	\$14.50	22mm 2-position selector switch illuminated short lever replacement operator, 5/pkg	

22mm Plastic Pilot Device Accessories

Three-position short lever operator



GR1288PR-5

Short Lever Replacement Operator				
Part Number	Lamp Color	Price	3-Position	Use with
GR1288PR-5	Red	\$14.50	22mm 3-position selector switch illuminated short lever replacement operator, 5/pk	Part numbers starting with GCX126, GCX128 GCX326, GVX328
GR1288PV-5	Green	\$14.50	22mm 3-position selector switch illuminated short lever replacement operator, 5/pk	
GR1288PG-5	Yellow	\$14.50	22mm 3-position selector switch illuminated short lever replacement operator, 5/pk	
GR1288PB-5	Blue	\$14.50	22mm 3-position selector switch illuminated short lever replacement operator, 5/pk	
GR1288PN-5	Clear	\$14.50	22mm 3-position selector switch illuminated short lever replacement operator, 5/pk	

Mushroom switch replacement operator



PL1298P-5

Mushroom Switch Replacement Operator				
Part Number	Lamp Color	Price	Description	Use with
PL1171PR-5	Red	\$6.25	22mm, illuminated momentary Mushroom switch replacement operator, red, 5/pk	Part numbers starting with GCX1221, GCX3221 mushroom-style illuminated pushbuttons
PL1298P-5	Red	\$6.25	22mm illuminated twist-to-release mushroom switch replacement operator, red, 5/pk	Part numbers starting with GCX1226, GCX3226 mushroom-style illuminated pushbuttons

Flush pushbutton replacement operator



GR1168PR-5

Flush Pushbutton Replacement Operator				
Part Number	Lamp Color	Price	Description	Use with
GR1168PR-5	Red	\$8.00	22mm illuminated flush pushbutton replacement operator, 5/pk	Part numbers starting with GCX119, GCX120 GCX319, GCX320
GR1168PV-5	Green	\$8.00	22mm illuminated flush pushbutton replacement operator, 5/pk	
GR1168PG-5	Yellow	\$8.00	22mm illuminated flush pushbutton replacement operator, 5/pk	
GR1168PB-5	Blue	\$8.00	22mm illuminated flush pushbutton replacement operator, 5/pk	
GR1168PN-5	Clear	\$8.00	22mm illuminated flush pushbutton replacement operator, 5/pk	
GR1168PW-5	White	\$8.00	22mm illuminated flush pushbutton replacement operator, 5/pk	

Extended pushbutton replacement operator



PL1308PR-5

Extended Pushbutton Replacement Operator				
Part Number	Lamp Color	Price	Description	Use with
PL1308PR-5	Red	\$6.00	22mm illuminated extended pushbutton, replacement operator, 5/pk	Part numbers starting with GCX121, GCX321
PL1308PV-5	Green	\$6.00	22mm illuminated extended pushbutton, replacement operator, 5/pk	
PL1308PG-5	Yellow	\$6.00	22mm illuminated extended pushbutton, replacement operator, 5/pk	
PL1308PB-5	Blue	\$6.00	22mm illuminated extended pushbutton, replacement operator, 5/pk	
PL1308PN-5	Clear	\$6.00	22mm illuminated extended pushbutton, replacement operator, 5/pk	
PL1308PW-5	White	\$6.00	22mm illuminated extended pushbutton, replacement operator, 5/pk	

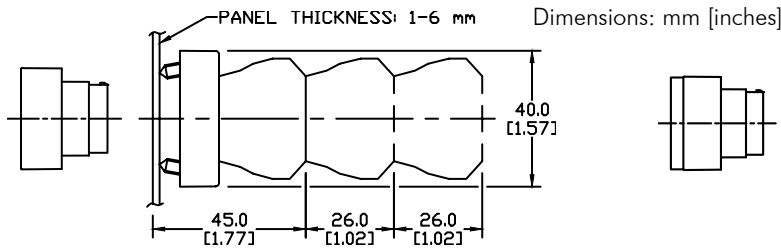
Note: All dimensions are in inches [millimeters].

GCX Series 22mm Plastic Pilot Devices Specifications

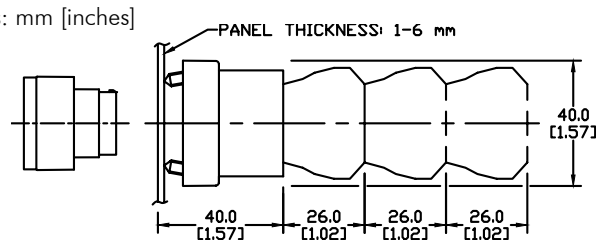
Assembly information

These pushbuttons and indicator lights are supplied with the appropriate contact blocks, unless otherwise indicated. Use these drawings as a guide to make sure there is adequate clearance behind the panel.

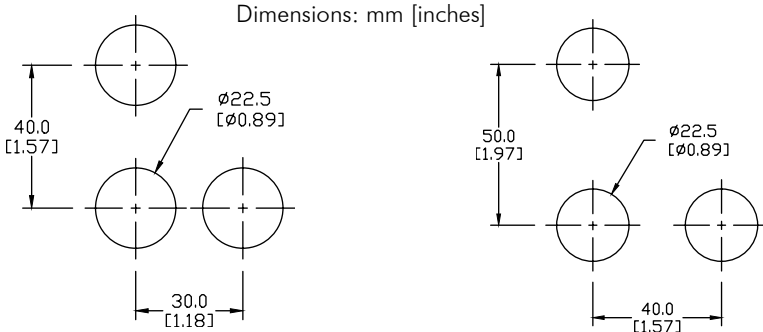
Pushbuttons and selector switches



Illuminated pushbuttons and selector switches/indicator lights

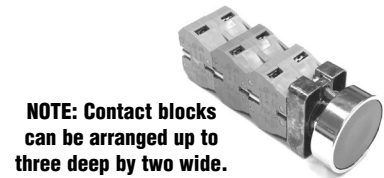


Mounting



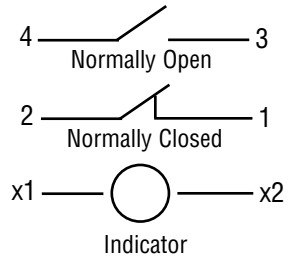
This layout is suitable if all switches are 230V or less and the same polarity.

This layout is suitable if all switches are 400V or less and different polarity.



NOTE: Contact blocks can be arranged up to three deep by two wide.

Typical Wiring



Specifications

These specifications apply to all the GCX and ECX 22mm plastic pushbuttons and switches.

Physical Specifications		Electrical Specifications	
Standards Reference	CEI EN 60947-5-1, CSA C22-2 n.14	Rated Thermal Current (contact block)	A300, Q300 (Refer to E22 Series mounting/contact rating section for details)
Approvals	UL File E189258, IMQ (where specified)	Rated Insulation Voltage	Ui 660V according to CEI EN 60947-5-1, 300V according to CSA C22-2 n.14 and UL 508
Enclosure Material	Fiberglass reinforced thermoplastic	Dielectric Strength	3kV (1 second)
Contacts Material	Silver	Insulation Resistance	2MΩ min. (500VDC)
Protection Degree	IP 40 for GCX3151-24, GCX3151-120, GCX3153-24 and GCX3153-120. IP 65 for all others. (See Appendix of this catalog for explanation of IP ratings according to IEC 144 CEI 70-1.)	Initial Contact Resistance	≤25mΩ
Electric Shock Protection	IEC 536, Class II	Short-Circuit Protection*	Cartridge fuses gl 10 A-500V 10, 3x381 100 KA
Temperature Ratings	Storage: -40° to 80°C (-40° to 176° F) Operating: -25° to +70°C (-13° to 158° F)	Terminal Markings	According to CENELEC EN 50013
Working Positions	All working positions are allowed	Connections	Single screw with non-loosening plate clamp, 14AWG max., Tighten to 0.8Nm max
Mechanical Life	Pushbuttons, selector switches, joy stick switches: 1,000,000 operations Emergency mushrooms and push-push pushbuttons: 300,000 operations	Contacts Operation	Self-cleaning types EN01 (N.C.) EN 10 (N.O.) slow action, positive opening
Positive Opening Operation	(according to IEC 947-5-1) All functions incorporating an NC contact are positive opening operation	Operation Frequency	3600 operations per hour max.
		Utilization Category	AC15 (Control of AC electromagnetic loads) 24 volts AC at 10 amps 130 volts AC at 6.5 amps DC13 (Control of DC electromagnetic loads) 24 volts DC at 1.5 amps 110 volts DC at 0.5 amps

*Note: Recommended, not supplied

To obtain the most current agency approval information, see the Agency Approval Checklist section on the specific part number's web page.