



# Mechanical Connectors

## 1-Opening Aluminum Dual-Rated Mechanical Lugs LA Series

### Overview

The LA series is a heavy-duty high-strength aluminum dual-rated connector that makes a reliable electrical connection to either an aluminum or copper conductor. These lugs have a single opening and are designed for easy installation while maintaining a low resistance high strength connection.

### Features

- Use with copper or aluminum conductors
- Manufactured from high strength aluminum alloy extrusion
- Electro-tin plated to ensure minimum contact resistance and corrosion protection when used with copper wire
- Connectors are rated for 600V, 90°C [194°F] applications
- The use of oxide inhibitor is recommended for all aluminum terminations



LA-250-1



### 1-Opening Aluminum Dual-Rated Mechanical Lugs - LA Series

Part Number	Price	Qty	Type	Voltage Rating	Number of Openings	Conductor Material and Conductor Range	Tightening Torque	Conductor Bolt Style	Number of Mounting Holes	Mounting Bolt Size	Material	Drawing Link
<a href="#">LA-0-1</a>	\$1.25	1	Box	600V	1	Copper (1) 14-1/0 AWG (2) 14-4 AWG Aluminum (1) 12-1/0 AWG (2) 12-4 AWG	CU: 50 lb•in AL: 35 lb•in	Slotted set screw	1	1/4 in	Aluminum-tin plated	<a href="#">PDF</a>
<a href="#">LA-2-1</a>	\$0.75					Copper (1) 14-2 AWG (2) 14-10 AWG Aluminum (1) 12-2 AWG (2) 10-12 AWG	45 lb•in	Slotted set screw		1/4 in		<a href="#">PDF</a>
<a href="#">LA-2/0-1</a>	\$1.25					Copper (1) 14-2/0 AWG Aluminum (1) 8-2/0 AWG	120 lb•in	3/16 in hex		1/4 in		<a href="#">PDF</a>
<a href="#">LA-250-1</a>	\$2.75					Copper (1) 6 AWG-250 MCM Aluminum (1) 6 AWG-250 MCM	275 lb•in	5/16 in hex		5/16 in		<a href="#">PDF</a>
<a href="#">LA-350-1</a>	\$4.50					Copper (1) 6 AWG-350 MCM Aluminum (1) 6 AWG-350 MCM	275 lb•in	5/16 in hex		3/8 in		<a href="#">PDF</a>
<a href="#">LA-500-1</a>	\$6.75					Copper (1) 4 AWG-500 MCM Aluminum (1) 4 AWG-500 MCM	375 lb•in	3/8 in hex		3/8 in		<a href="#">PDF</a>
<a href="#">LA-6-1</a>	\$0.50					Copper (1) 14-4 AWG Aluminum (1) 8-4 AWG	35 lb•in	Slotted set screw		1/4 in		<a href="#">PDF</a>
<a href="#">LA-600-1</a>	\$8.50					Copper (1) 2 AWG-600 MCM Aluminum (1) 2 AWG-600 MCM	500 lb•in	1/2 in hex		3/8 in		<a href="#">PDF</a>
<a href="#">LA-800-1</a>	\$12.25					Copper (1) 300-800 MCM Aluminum (1) 300-800 MCM	500 lb•in	1/2 in hex		5/8 in		<a href="#">PDF</a>

Note: Use same conductor type, Copper or Aluminum, per opening. Do not mix conductor type in an opening.

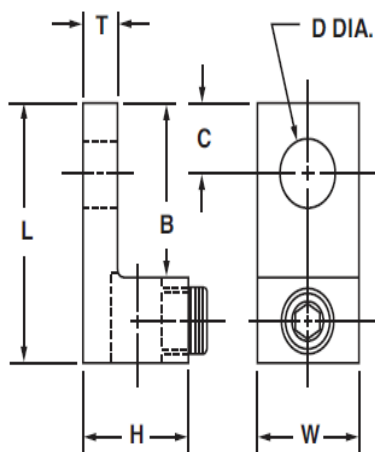


# PennUnion™ Mechanical Connectors

## 1-Opening Aluminum Dual-Rated Mechanical Lugs LA Series

**1-Opening Aluminum Dual-Rated Mechanical Lugs - LA Series Dimensions**

Part Number	Approximate Dimensions in [mm]						
	L	W	H	T	B	C	D (Dia.)
<b><u>LA-0-1</u></b>	1.46 [37.08]	0.63 [16.00]	0.79 [20.26]	0.19 [4.82]	0.84 [21.33]	0.44 [11.17]	0.27 [6.85]
<b><u>LA-2-1</u></b>	1.16 [29.46]	0.50 [12.70]	0.55 [13.97]	0.11 [2.79]	0.69 [17.52]	0.31 [7.87]	0.27 [6.85]
<b><u>LA-2/0-1</u></b>	1.46 [37.08]	0.63 [16.00]	0.79 [20.26]	0.19 [4.82]	0.84 [21.33]	0.44 [11.17]	0.27 [6.85]
<b><u>LA-250-1</u></b>	2.00 [50.80]	1.00 [25.40]	1.12 [28.44]	0.25 [6.35]	1.00 [25.40]	0.47 [11.93]	0.33 [8.38]
<b><u>LA-350-1</u></b>	2.25 [57.15]	1.13 [28.70]	1.25 [31.75]	0.25 [6.35]	1.13 [28.70]	0.50 [12.70]	0.41 [10.41]
<b><u>LA-500-1</u></b>	2.81 [71.37]	1.50 [38.10]	1.57 [39.87]	0.31 [7.87]	1.59 [40.38]	0.87 [22.09]	0.41 [10.41]
<b><u>LA-6-1</u></b>	1.06 [26.92]	0.50 [12.70]	0.50 [12.70]	0.09 [2.28]	0.68 [17.27]	0.25 [6.35]	0.27 [6.85]
<b><u>LA-600-1</u></b>	3.19 [81.02]	1.50 [38.10]	1.57 [39.87]	0.44 [11.17]	1.81 [45.97]	0.87 [22.09]	0.41 [10.41]
<b><u>LA-800-1</u></b>	3.37 [85.59]	1.75 [44.45]	1.94 [49.27]	0.50 [12.70]	1.75 [44.45]	0.87 [22.09]	0.66 [16.76]





# Mechanical Connectors

## 2-Opening Aluminum Dual-Rated Mechanical Lugs L2A Series

### Overview

The L2A series is a heavy-duty high strength aluminum dual-rated connector that makes a reliable electrical connection to either an aluminum or copper conductor. These lugs have 2 openings and are designed for easy installation while maintaining a low resistance high strength connection.

### Features

- For use with copper or aluminum conductors
- Manufactured from high strength aluminum alloy extrusion
- Electro-tin plated to ensure minimum contact resistance and corrosion protection
- Connectors are rated for 600V, 90°C [194°F] applications
- The use of oxide inhibitor is recommended for all aluminum terminations



**L2A-250-1**



### 2-Opening Aluminum Dual-Rated Mechanical Lugs - L2A Series

Part Number	Price	Qty	Type	Voltage Rating	Number of Openings	Conductor Material and Conductor Range	Tightening Torque	Conductor Bolt Size	Number of Mounting Holes	Mounting Bolt Size	Material	Drawing Link
<a href="#">L2A-0-1</a>	\$2.00	1	Box	600V	2	Copper (1) 14 to 1/0 AWG Aluminum (1) 8 to 1/0 AWG	40 lb•in	Slotted set screw	1	1/4 in	Aluminum-tin plated	<a href="#">PDF</a>
<a href="#">L2A-2/0-1</a>	\$2.25					Copper (1) 14 to 2/0 AWG Aluminum (1) 8 to 2/0 AWG	120 lb•in	3/16 in hex		1/4 in		<a href="#">PDF</a>
<a href="#">L2A-250-1</a>	\$5.75					Copper (1) 6 AWG-250 MCM Aluminum (1) 6 AWG-250 MCM	225 lb•in	5/16 in hex		3/8 in		<a href="#">PDF</a>
<a href="#">L2A-350-1</a>	\$7.75					Copper (1) 6 AWG-350 MCM Aluminum (1) 6 AWG-350 MCM	225 lb•in	5/16 in hex		1/2 in		<a href="#">PDF</a>
<a href="#">L2A-600-1</a>	\$13.25					Copper (1) 2 AWG-600 MCM Aluminum (1) 2 AWG-600 MCM	400 lb•in	1/2 in hex		1/2 in		<a href="#">PDF</a>

Note: Use same conductor type, Copper or Aluminum, per opening. Do not mix conductor type in an opening.

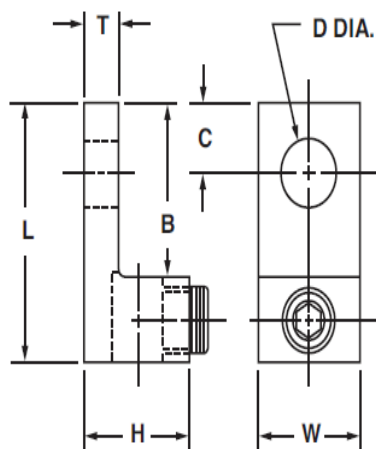


# PennUnion™ Mechanical Connectors

## 2-Opening Aluminum Dual-Rated Mechanical Lugs L2A Series

**2-Opening Aluminum Dual-Rated Mechanical Lugs - L2A Series Dimensions**

Part Number	Approximate Dimensions in [mm]						
	L	W1	H	T	B	C	D (Dia.)
<u><a href="#">L2A-0-1</a></u>	1.46 [37.08]	1.22 [30.98]	0.79 [20.06]	0.19 [4.82]	0.84 [21.33]	0.44 [11.17]	0.27 [6.85]
<u><a href="#">L2A-2/0-1</a></u>	1.46 [37.08]	1.25 [31.75]	0.79 [20.06]	0.19 [4.82]	0.84 [21.33]	0.42 [10.66]	0.27 [6.85]
<u><a href="#">L2A-250-1</a></u>	2.56 [65.02]	1.66 [42.16]	1.19 [30.22]	0.25 [6.35]	1.56 [39.62]	0.87 [22.09]	0.39 [9.90]
<u><a href="#">L2A-350-1</a></u>	2.87 [72.89]	1.91 [48.54]	1.22 [30.98]	0.25 [6.35]	1.75 [44.45]	0.87 [22.09]	0.56 [14.22]
<u><a href="#">L2A-600-1</a></u>	3.19 [81.02]	2.41 [61.12]	1.57 [39.87]	0.44 [11.17]	1.81 [45.97]	0.63 [16.00]	0.53 [13.46]





# Mechanical Connectors

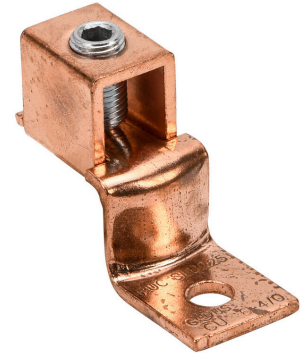
## Copper Offset Tongue Mechanical Lugs SAU & SLU Series

### Overview

The SAU and SLU series is copper mechanical lug with an offset tongue. The concave pressure bar and V-bottom collar design assure positive contact and a reliable electrical connection to the copper conductor. These lugs have a single opening and are designed for easy installation for a wide variety of industrial applications.

### Features

- Manufactured from electrolytic copper for maximum conductivity and strength
- Unique design of the concave pressure bar and V-bottom collar assures positive contact and firm, permanent grip
- Use with copper conductors only
- Offset tongue for joining a wide range of cable to equipment pads or bars
- Plated steel set screws resist corrosion



**SLU-225-1**



### Copper Offset Tongue Mechanical Lugs - SAU & SLU Series

Part Number	Price	Qty	Type	Amperage Rating	Number of Openings	Conductor Material and Conductor Range	Tightening Torque	Conductor Bolt Style	Number of Mounting Holes	Mounting Bolt Size	Material	Drawing Link
<a href="#">SAU-70-1</a>	\$2.00	1	Offset tongue	70A	1	Copper (1) 14 AWG solid (1) 4 AWG stranded	14-10 AWG: 20 lb•in 8 AWG: 25 lb•in 6-4 AWG:35 lb•in	Slotted set screw	1	1/4 in	Copper-electrolytic	<a href="#">PDF</a>
<a href="#">SLU-125-1</a>	\$3.50			125A		Copper (1) 8 AWG solid (1) 1/0 AWG stranded	120 lb•in	3/16 in hex		1/4 in		<a href="#">PDF</a>
<a href="#">SLU-175-1</a>	\$5.50			175A		Copper (1) 4 AWG stranded (1) 3/0 AWG stranded	120 lb•in			3/8 in		<a href="#">PDF</a>
<a href="#">SLU-225-1</a>	\$10.00			225A		Copper (1) 6 AWG stranded (1) 4/0 AWG stranded	150 lb•in	7/32 in hex		5/16 in		<a href="#">PDF</a>
<a href="#">SLU-35-1</a>	\$1.25			35-50A		Copper (1) 14 AWG solid (1) 6 AWG stranded	14-10 AWG: 20 lb•in 8 AWG: 25 lb•in 6 AWG: 35 lb•in	Slotted pan head		#10		<a href="#">PDF</a>
<a href="#">SLU-70-1</a>	\$2.25			70-90A		Copper (1) 8 AWG solid (1) 2 AWG stranded	8 AWG: 40 lb•in 6-4 AWG: 45 lb•in 3 AWG: 50 lb•in 2 AWG:50 lb•in	Slotted set screw		1/4 in		<a href="#">PDF</a>

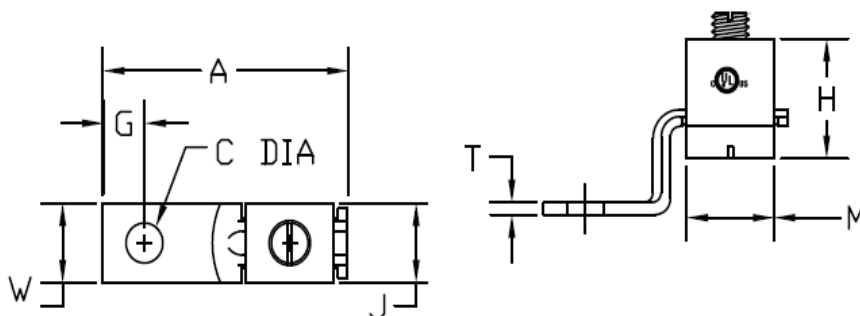


# PennUnion™ Mechanical Connectors

## Copper Offset Tongue Mechanical Lugs SAU & SLU Series

**Copper Offset Tongue Mechanical Lugs - SAU & SLU Series Dimensions**

Part Number	Approximate Dimensions in [mm]							
	A	W	G	C (Dia.)	T	M	H	J
<a href="#"><u>SAU-70-1</u></a>	1.38 [35.05]	0.50 [12.70]	0.26 [6.60]	0.27 [6.85]	0.08 [2.03]	0.43 [10.92]	0.55 [13.97]	0.39 [9.90]
<a href="#"><u>SLU-125-1</u></a>	1.95 [49.53]	0.63 [16.00]	0.33 [8.38]	0.27 [6.85]	0.12 [3.04]	0.60 [15.24]	0.82 [20.82]	0.63 [16.00]
<a href="#"><u>SLU-175-1</u></a>	2.20 [55.88]	0.75 [19.05]	0.43 [10.92]	0.41 [10.41]	0.12 [3.04]	0.73 [18.54]	1.04 [26.41]	0.71 [18.03]
<a href="#"><u>SLU-225-1</u></a>	2.62 [66.54]	0.98 [24.89]	0.48 [12.19]	0.35 [8.89]	0.12 [3.04]	0.98 [24.89]	1.16 [29.46]	0.77 [19.55]
<a href="#"><u>SLU-35-1</u></a>	1.17 [29.71]	0.38 [9.65]	0.21 [5.33]	0.20 [5.08]	0.06 [1.52]	0.43 [10.92]	0.48 [12.19]	0.31 [7.87]
<a href="#"><u>SLU-70-1</u></a>	1.55 [39.37]	0.50 [12.70]	0.26 [6.60]	0.27 [6.85]	0.08 [2.03]	0.49 [12.44]	0.64 [16.25]	0.47 [11.93]





# Mechanical Connectors

## Copper Straight Tongue Mechanical Lugs SAS & SLS Series

### Overview

The SAS and SLS series are copper mechanical lugs with a compact straight tongue design. These lugs have a single opening and are designed for easy installation for a wide variety of industrial applications.

### Features

- Manufactured from electrolytic copper for maximum conductivity and strength
- For use in power and grounding applications
- Use with copper conductors only
- Plated steel set screws resist corrosion
- UL 467 listed and UL 486A-B listed



**SAS-70-1**

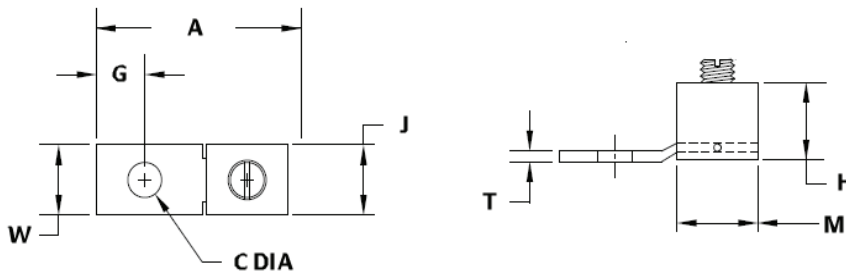


### Copper Straight Tongue Mechanical Lugs - SAS & SLS Series

Part Number	Price	Qty	Type	Amperage Rating	Number of Openings	Conductor Material and Conductor Range	Tightening Torque	Conductor Bolt Style	Number of Mounting Holes	Mounting Bolt Size	Material	Drawing Link
<a href="#">SAS-70-1</a>	\$1.75	1	Straight tongue	70A	1	Copper (1) 14-4 AWG	14-10 AWG: 20 lb•in 8 AWG: 25 lb•in 6-4 AWG: 35 lb•in	Slotted set screw	1	1/4 in	Copper-electrolytic	<a href="#">PDF</a>
<a href="#">SLS-35-1</a>	\$1.50			35-50A		Copper (1) 14-6 AWG	14-10 AWG: 13 lb•in 8 AWG: 25 lb•in 6 AWG: 25 lb•in	Slotted pan head		#10		<a href="#">PDF</a>

### Copper Straight Tongue Mechanical Lugs - SAS & SLS Series Dimensions

Part Number	Approximate Dimensions in [mm]							
	A	W	G	C (Dia.)	T	M	H	J
<a href="#">SAS-70-1</a>	1.26 [32.04]	0.50 [12.70]	0.38 [9.65]	0.27 [6.85]	0.08 [2.03]	0.49 [12.44]	0.54 [13.71]	0.44 [11.17]
<a href="#">SLS-35-1</a>	1.00 [25.40]	0.37 [9.39]	0.24 [6.09]	0.20 [5.08]	0.06 [1.52]	0.37 [9.39]	0.47 [11.93]	0.34 [8.63]





# Mechanical Connectors

## Aluminum Dual-Rated Panelboard Mechanical Lugs PB Series

### Overview

The PB series is a heavy-duty high strength aluminum dual-rated connector that makes a reliable electrical connection to either an aluminum or copper conductor. These lugs feature 2, 3, or 4 openings and a stacked space saving design for easy installation while maintaining a low resistance high strength connection.

### Features

- Use with copper or aluminum conductors
- Space saving design allows for 2, 3, or 4 openings
- Manufactured from high strength aluminum alloy extrusion
- Electro-tin plated to ensure minimum contact resistance and corrosion protection when used with copper wire
- Rated for 600V, 90°C [194°F] applications
- The use of oxide inhibitor is recommended for all aluminum terminations



**PB3-600D1-1**



### Aluminum Dual-Rated Panelboard Mechanical Lugs - PB Series

Part Number	Price	Qty	Type	Voltage Rating	Number of Openings	Conductor Material and Conductor Range	Tightening Torque	Conductor Bolt Style	Number of Mounting Holes	Mounting Bolt Size	Material	Drawing Link
<a href="#"><u>PB2-350S-1</u></a>	\$21.50	1	Panelboard	600V	2	Copper (1) 6 AWG-350 MCM Aluminum (1) 6 AWG-350 MCM	375 lb•in	5/16 in hex	1	5/16 in	Aluminum-tin plated	<a href="#"><u>PDF</u></a>
<a href="#"><u>PB2-600D1-1</u></a>	\$41.50				2	Copper (1) 2 AWG-600 MCM Aluminum (1) 2 AWG-600 MCM	500 lb•in		2	<a href="#"><u>PDF</u></a>		
<a href="#"><u>PB2-750D1-1</u></a>	\$47.50				2	Copper (1) 1/0 AWG-750 MCM Aluminum (1) 1/0 AWG-750 MCM	620 lb•in		2	<a href="#"><u>PDF</u></a>		
<a href="#"><u>PB3-600D1-1</u></a>	\$59.50				3	Copper (1) 2 AWG-600 MCM Aluminum (1) 2 AWG-600 MCM	500 lb•in		2	<a href="#"><u>PDF</u></a>		
<a href="#"><u>PB3-750D1-1</u></a>	\$72.00				3	Copper (1) 1/0 AWG-750 MCM Aluminum (1) 1/0 AWG-750 MCM	620 lb•in		2	<a href="#"><u>PDF</u></a>		
<a href="#"><u>PB4-600D1-1</u></a>	\$59.50				4	Copper (1) 2 AWG-600 MCM Aluminum (1) 2 AWG-600 MCM	500 lb•in		2	<a href="#"><u>PDF</u></a>		
<a href="#"><u>PB4-750D1-1</u></a>	\$73.75				4	Copper (1) 1/0 AWG-750 MCM Aluminum (1) 1/0 AWG-750 MCM	620 lb•in		2	<a href="#"><u>PDF</u></a>		

Note: Use same conductor type, Copper or Aluminum, per opening. Do not mix conductor type in an opening.





# PennUnion™ Mechanical Connectors

## Aluminum Dual-Rated Panelboard Mechanical Lugs PB Series

### Aluminum Dual-Rated Panelboard Mechanical Lugs - PB Series Dimensions

Part Number	Figure Number	Approximate Dimensions in [mm]					
		L	W	H	T	C	E
<b><u>PB2-350S-1</u></b>	1	2.99 [75.94]	1.00 [25.40]	2.01 [51.05]	0.31 [7.87]	0.39 [9.90]	—
<b><u>PB2-600D1-1</u></b>	2	4.94 [125.47]	1.50 [38.10]	2.99 [75.94]	0.76 [19.30]	0.39 [9.90]	1.38 [35.05]
<b><u>PB2-750D1-1</u></b>	2	4.94 [125.47]	1.57 [39.87]	2.99 [75.94]	0.76 [19.30]	0.39 [9.90]	1.38 [35.05]
<b><u>PB3-600D1-1</u></b>	3	4.94 [125.47]	2.68 [68.07]	2.99 [75.94]	0.76 [19.30]	0.39 [9.90]	1.38 [35.05]
<b><u>PB3-750D1-1</u></b>	3	4.94 [125.47]	2.83 [71.88]	2.99 [75.94]	0.76 [19.30]	0.39 [9.90]	1.38 [35.05]
<b><u>PB4-600D1-1</u></b>	4	4.94 [125.47]	2.68 [68.07]	2.99 [75.94]	0.76 [19.30]	0.39 [9.90]	1.38 [35.05]
<b><u>PB4-750D1-1</u></b>	4	4.94 [125.47]	2.83 [71.88]	2.99 [75.94]	0.76 [19.30]	0.39 [9.90]	1.38 [35.05]

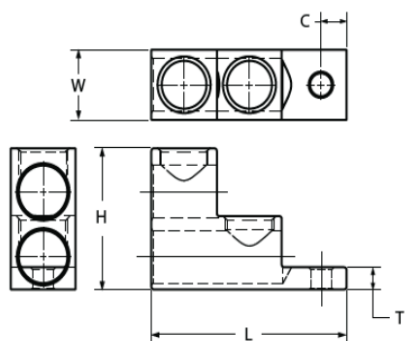


FIGURE 1

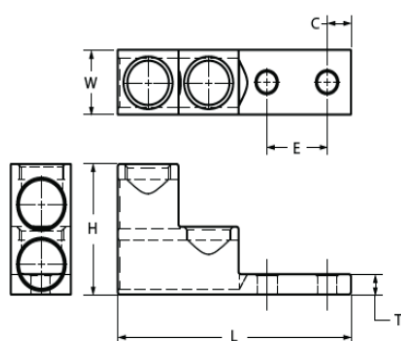


FIGURE 2

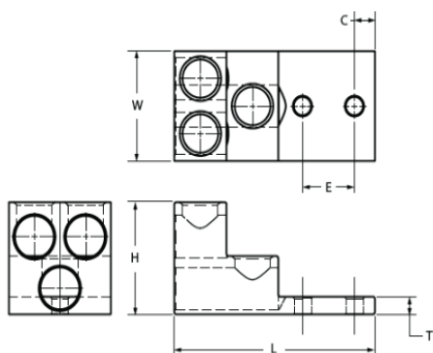


FIGURE 3

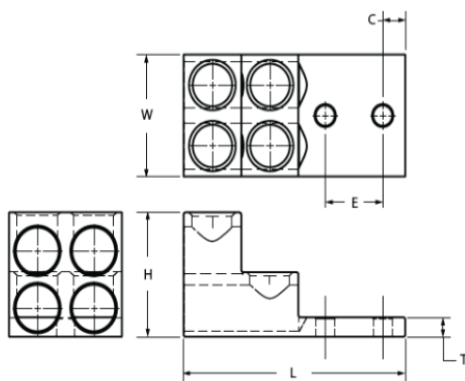


FIGURE 4



# Mechanical Connectors

## Aluminum Neutral Bars NA Series

### Overview

The NA series aluminum neutral bars are manufactured from high strength aluminum alloy and tin plated to maintain a low resistance high strength dual-rated connection. These neutral bars are designed for easy installation, can have up to 20 circuits on a single bar, and can be used in a variety of neutral and grounding applications.

### Features

- For use in neutral and grounding applications
- Manufactured from high strength aluminum alloy
- Tin plated
- Screws are made of mild steel and plated
- Dual-rated for copper or aluminum conductors
- UL 467 listed

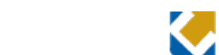


**NA-409-1**



Aluminum Neutral Bars - NA Series									
Part Number	Price	Qty	Number of Openings	Number of Circuits	Mounting Hole Position	Conductor Material and Conductor Range	Tightening Torque	Material	Drawing Link
<a href="#">NA-401-1</a>	\$1.00	1	3	2	2	Copper 14-4 AWG stranded 14-8 AWG solid	Copper 14-8 AWG 20 lb•in 6-4 AWG 31 lb•in	Aluminum-tin plated	<a href="#">PDF</a>
<a href="#">NA-402-1</a>	\$1.25		5	4	3				<a href="#">PDF</a>
<a href="#">NA-403-1</a>	\$1.50		6	5	3				<a href="#">PDF</a>
<a href="#">NA-404-1</a>	\$1.75		7	6	4				<a href="#">PDF</a>
<a href="#">NA-405-1</a>	\$1.50		6	4	1 and 4				<a href="#">PDF</a>
<a href="#">NA-406-1</a>	\$1.75		7	5	1 and 7				<a href="#">PDF</a>
<a href="#">NA-407-1</a>	\$1.75		7	5	2 and 6				<a href="#">PDF</a>
<a href="#">NA-408-1</a>	\$2.00		8	6	4 and 7				<a href="#">PDF</a>
<a href="#">NA-409-1</a>	\$2.25		9	7	3 and 7	Aluminum 8-4 AWG stranded 12-8 AWG solid	Aluminum 14-8 AWG 20 lb•in 6-4 AWG 31 lb•in		<a href="#">PDF</a>
<a href="#">NA-410-1</a>	\$2.75		11	9	1 and 11				<a href="#">PDF</a>
<a href="#">NA-411-1</a>	\$3.00		12	10	1 and 12				<a href="#">PDF</a>
<a href="#">NA-412-1</a>	\$3.50		14	12	1 and 14				<a href="#">PDF</a>
<a href="#">NA-413-1</a>	\$4.25		17	15	1 and 17				<a href="#">PDF</a>
<a href="#">NA-414-1</a>	\$5.50		22	20	1 and 22				<a href="#">PDF</a>
<a href="#">NA-416-1</a>	\$4.25		12	10	3 and 11				Aluminum 8-2 AWG stranded 12-8 AWG solid
<a href="#">NA-417-1</a>	\$3.25	3	2	2	Copper 14-2/0 AWG stranded 14-8 AWG solid	Copper 14-10 AWG 35 lb•in 8-2/0 AWG 120 lb•in	<a href="#">PDF</a>		
<a href="#">NA-418-1</a>	\$5.50	5	3	2 and 4			<a href="#">PDF</a>		
<a href="#">NA-419-1</a>	\$9.00	8	6	1 and 8	Aluminum 8-2/0 AWG stranded 12-8 AWG solid	Aluminum 14-10 AWG 35 lb•in 8 AWG 50 lb•in 6-2/0 AWG 120 lb•in	<a href="#">PDF</a>		

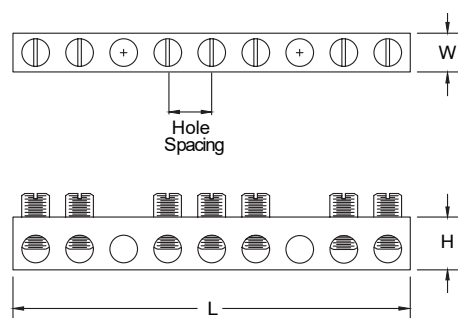
Note: Use same conductor type, Copper or Aluminum, per opening. Do not mix conductor type in an opening.



# PennUnion™ Mechanical Connectors

## Aluminum Neutral Bars NA Series

Aluminum Neutral Bars - NA Series Dimensions				
Part Number	Approximate Dimensions in [mm]			Hole Spacing
	L	W	H	
<a href="#"><u>NA-401-1</u></a>	0.95 [24.13]	0.33 [8.38]	0.44 [11.17]	0.31 [7.87]
<a href="#"><u>NA-402-1</u></a>	1.57 [39.87]	0.33 [8.38]	0.44 [11.17]	0.31 [7.87]
<a href="#"><u>NA-403-1</u></a>	1.88 [47.75]	0.33 [8.38]	0.44 [11.17]	0.31 [7.87]
<a href="#"><u>NA-404-1</u></a>	2.25 [57.15]	0.33 [8.38]	0.44 [11.17]	0.31 [7.87]
<a href="#"><u>NA-405-1</u></a>	1.88 [47.75]	0.33 [8.38]	0.44 [11.17]	0.31 [7.87]
<a href="#"><u>NA-406-1</u></a>	2.25 [57.15]	0.33 [8.38]	0.44 [11.17]	0.31 [7.87]
<a href="#"><u>NA-407-1</u></a>	2.25 [57.15]	0.33 [8.38]	0.44 [11.17]	0.31 [7.87]
<a href="#"><u>NA-408-1</u></a>	2.56 [65.02]	0.33 [8.38]	0.44 [11.17]	0.31 [7.87]
<a href="#"><u>NA-409-1</u></a>	2.87 [72.89]	0.33 [8.38]	0.44 [11.17]	0.31 [7.87]
<a href="#"><u>NA-410-1</u></a>	3.50 [88.90]	0.33 [8.38]	0.44 [11.17]	0.31 [7.87]
<a href="#"><u>NA-411-1</u></a>	3.81 [96.77]	0.33 [8.38]	0.44 [11.17]	0.31 [7.87]
<a href="#"><u>NA-412-1</u></a>	4.43 [112.52]	0.33 [8.38]	0.44 [11.17]	0.31 [7.87]
<a href="#"><u>NA-413-1</u></a>	5.37 [136.39]	0.33 [8.38]	0.44 [11.17]	0.31 [7.87]
<a href="#"><u>NA-414-1</u></a>	6.93 [176.02]	0.33 [8.38]	0.44 [11.17]	0.31 [7.87]
<a href="#"><u>NA-416-1</u></a>	4.83 [122.68]	0.38 [9.65]	0.50 [12.70]	0.40 [10.16]
<a href="#"><u>NA-417-1</u></a>	1.75 [44.45]	0.63 [16.00]	0.75 [19.05]	0.60 [15.24]
<a href="#"><u>NA-418-1</u></a>	2.95 [74.93]	0.63 [16.00]	0.75 [19.05]	0.60 [15.24]
<a href="#"><u>NA-419-1</u></a>	4.75 [120.65]	0.63 [16.00]	0.75 [19.05]	0.60 [15.24]





# Mechanical Connectors

## Copper Neutral Bars NC Series

### Overview

The NC series copper neutral bars are manufactured from high strength copper. These neutral bars are designed for easy installation, can have up to 13 circuits on a single bar and can be used in a variety of neutral and grounding applications.

### Features

- Manufactured from high strength copper
- For use in neutral and grounding applications
- Use with copper conductors only
- Screws are made of mild steel and plated
- UL 467 listed



**NC-420-1**



Copper Neutral Bars - NC Series									
Part Number	Price	Qty	Number of Openings	Number of Circuits	Mounting Hole Position	Conductor Material and Conductor Range	Tightening Torque	Material	Drawing Link
<a href="#">NC-420-1</a>	\$4.00	1	6	4	1 and 6	Copper 14-4 AWG stranded 14-8 AWG solid	Copper 14-8 AWG 20 lb•in 6-4 AWG 31 lb•in	Copper	<a href="#">PDF</a>
<a href="#">NC-421-1</a>	\$4.50		7	5	1 and 7				<a href="#">PDF</a>
<a href="#">NC-422-1</a>	\$5.25		8	6	1 and 8				<a href="#">PDF</a>
<a href="#">NC-423-1</a>	\$9.00		14	12	1 and 14				<a href="#">PDF</a>
<a href="#">NC-424-1</a>	\$9.75		15	13	3 and 13				<a href="#">PDF</a>
<a href="#">NC-425-1</a>	\$9.75		15	13	6 and 11				<a href="#">PDF</a>
<a href="#">NC-428-1</a>	\$9.00		8	6	2 and 7	Copper 14-2 AWG stranded 14-8 AWG solid	Copper 14-8 AWG 20 lb•in 6-4 AWG 45 lb•in 2 AWG 50 lb•in		<a href="#">PDF</a>

### Copper Neutral Bars - NC Series Dimensions

Part Number	Approximate Dimensions in [mm]			Hole Spacing
	L	W	H	
<a href="#">NC-420-1</a>	1.94 [49.27]	0.33 [8.38]	0.44 [11.17]	0.31 [7.87]
<a href="#">NC-421-1</a>	2.25 [57.15]	0.33 [8.38]	0.44 [11.17]	0.31 [7.87]
<a href="#">NC-422-1</a>	2.56 [65.02]	0.33 [8.38]	0.44 [11.17]	0.31 [7.87]
<a href="#">NC-423-1</a>	4.43 [112.52]	0.33 [8.38]	0.44 [11.17]	0.31 [7.87]
<a href="#">NC-424-1</a>	4.74 [120.39]	0.33 [8.38]	0.44 [11.17]	0.31 [7.87]
<a href="#">NC-425-1</a>	4.74 [120.39]	0.33 [8.38]	0.44 [11.17]	0.31 [7.87]
<a href="#">NC-428-1</a>	3.25 [82.55]	0.38 [9.65]	0.50 [12.70]	0.40 [10.16]

