

FB Series Photoelectric Sensors



M18 (18 mm) plastic - DC

- Low cost/ high performance
- 13 models available
- Diffuse, polarized reflective, and through-beam models
- Compact plastic housing
- M12 quick-disconnect; order cable separately
- Potentiometer range adjustment on diffuse models



FB Series Photoelectric Sensors Selection Chart							
Part Number	Price	Sensing Range	Output State	Logic	Connection	Wiring	Dimensions
Diffuse							
FB6-LN-0E	\$21.50	70 to 400 mm (2.76 to 15.75 in)	N.O.	NPN	M12 (12mm) connector	Diagram 1	Figure 1
FB6-LP-0E	\$21.50			PNP	M12 (12mm) connector	Diagram 2	
FB6-DN-0E	\$21.50		N.C.	NPN	M12 (12mm) connector	Diagram 1	
FB6-DP-0E	\$21.50			PNP	M12 (12mm) connector	Diagram 2	
Polarized reflective*							
FBP-LN-0E	\$21.50	2.5 m (8.2 ft)	N.C.	NPN	M12 (12mm) connector	Diagram 1	Figure 1
FBP-LP-0E	\$21.50			PNP	M12 (12mm) connector	Diagram 2	
FBP-DN-0E	\$21.50		N.O.	NPN	M12 (12mm) connector	Diagram 1	
FBP-DP-0E	\$21.50			PNP	M12 (12mm) connector	Diagram 2	
Through-beam**							
FBR-LN-0E	Receiver	\$20.00	N.C.	NPN	M12 (12mm) connector	Diagram 1	Figure 1
FBR-LP-0E	Receiver	\$20.00		PNP	M12 (12mm) connector	Diagram 2	
FBR-DN-0E	Receiver	\$20.00	N.O.	NPN	M12 (12mm) connector	Diagram 1	
FBR-DP-0E	Receiver	\$20.00		PNP	M12 (12mm) connector	Diagram 2	
FBE-00-0E	Emitter	\$18.50	—	Receiver dependent	M12 (12mm) connector	Diagram 3	—

*Purchase reflectors separately.

**Purchase one receiver and one emitter for a complete set.

Wiring Diagrams

Diagram 1

NPN Output

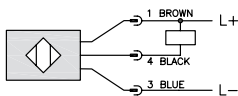


Diagram 2

PNPN Output

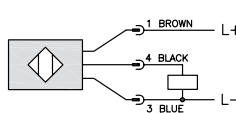
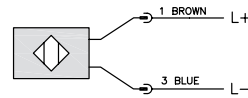


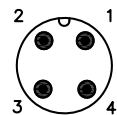
Diagram 3



Switching Element Function		
	Thru-Beam and Reflective Models	Diffuse Models
Light-on	N.C.	N.O.
Dark-on	N.O.	N.C.

Connector

M12 Connector

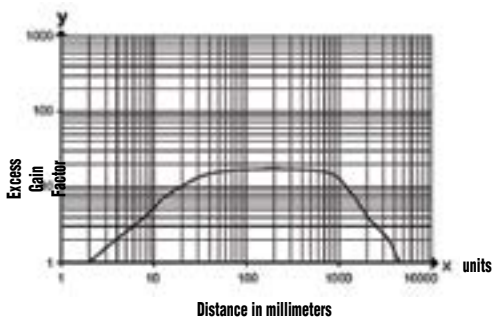


FB Series Photoelectric Sensors

Specifications	Diffuse Models	Reflective Models	Through-Beam Models
Type	Diffuse reflection	Polarized reflection ¹	Through-beam ²
Sensing Distance	400mm	2.5m	8m
Light Spot Diameter	25mm at maximum range	200mm at maximum range	600mm at maximum range
Emission	Red LED (visible), 645 nm		
Sensitivity	Adjustable 70 to 400 mm	Fixed	Fixed
Output Type	NPN or PNP - Light-on or Dark-on		
Operating Voltage	10-30 VDC		
No Load Supply Current	≤20 mA	≤20 mA	≤8 mA
Operating (Load) Current	≤200 mA		
Off-state (Leakage) Current	N/A		
Voltage Drop	<2.5V		
Switching Frequency	1kHz		
Ripple	N/A		
Time Delay Before Availability (tv)	N/A		
Short-Circuit Protection	Yes		
Operating Temperature Range	-25 to 60°C (-13° to 140°F)		
Protection Degree (DIN 40050)	IEC IP65	IEC IP67	
LED Indicators - Switching Status	Yellow (output energized)		
Housing Material	Acrylonitrile-butadienestyrene (ABS), black		
Lens Material	Polymethyl metacrylate (PMMA)		
Shock /Vibration	EN 60947-5-2 part 7, 4, 1/EN 60947-5-2 part 7, 4, 2		
Tightening Torque	2.25 Nm (1.66 lb-ft)		
Weight	8.50 g (0.3 oz)		
Connection	M12 connector. Two mounting hex nuts included		
Agency Approvals	cULus listed, UL file E328811, CE, RoHS		

Notes: ¹ With standard diameter 84mm RL110 reflector. Purchase reflectors separately.
² An emitter and receiver pair must be ordered for a complete sensor set.

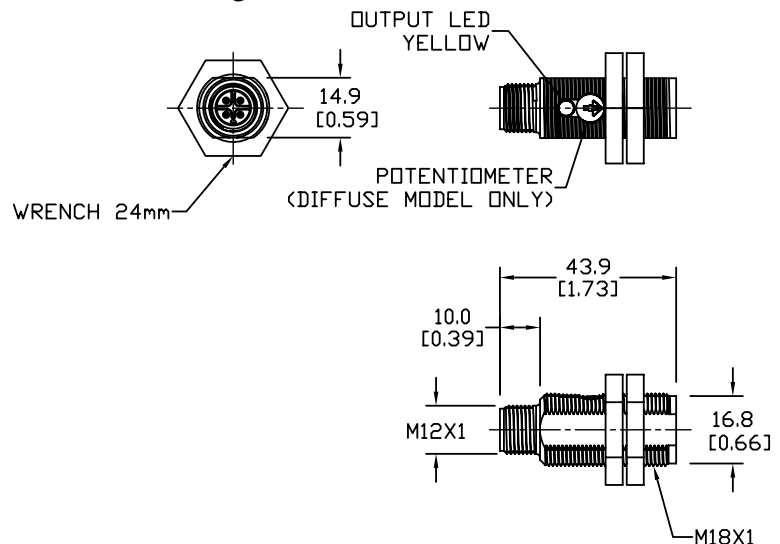
Curves FBP series



Dimensions

mm [inches]

Figure 1



Accessories for 18mm Sensors

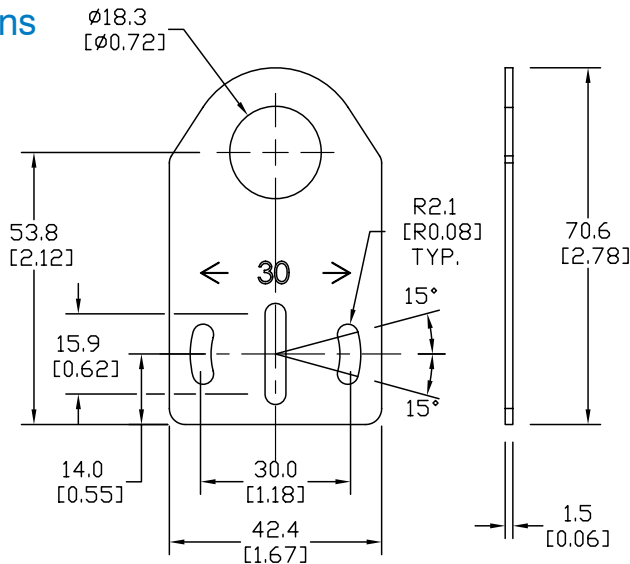
Axial Mounting Bracket

Axial mounting bracket for use with 18mm sensors. Has two mounting holes (use 4mm screws) and allows for rotation of an optical axis for right-beam-angle-adaptor sensors. Hexagonal nuts not included.

Accessories for 18mm Sensors			
Part Number	Price	Description	Weight [lb]
ST18A	\$1.25	Mounting bracket, axial, zinc-plated steel. For use with 18mm sensors. 1/pk.	0.06
ST18A7W	\$6.00	Mounting bracket, axial, 316L stainless steel. For use with 18mm sensors. 1/pk.	0.06

Dimensions

mm [inches]



ST18A

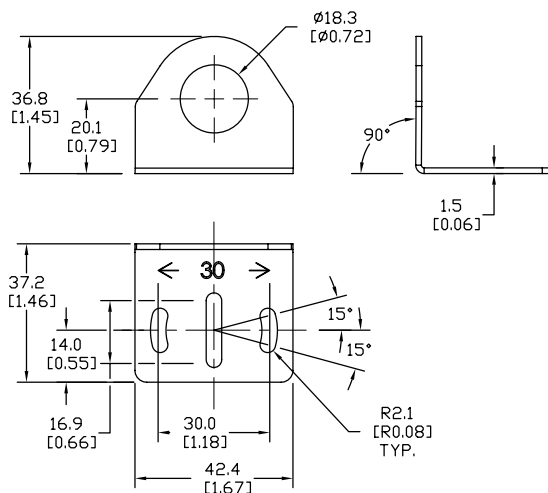
Right-angle Mounting Bracket

Right-angle mounting bracket for use with 18mm sensors. Has two mounting holes (use 4mm screws) and allows the rotation of an optical axis for axial sensors. Hexagonal nuts not included.

Accessories for 18mm Sensors			
Part Number	Price	Description	Weight [lb]
ST18C	\$1.25	Mounting bracket, right angle, zinc-plated steel. For use with 18mm sensors. 1/pk.	0.06
ST18C7W	\$6.00	Mounting bracket, right angle, 316L stainless steel. For use with 18mm sensors. 1/pk.	0.06

Dimensions

mm [inches]



ST18C

See our website: www.AutomationDirect.com for complete engineering drawings

Accessories for 18mm Sensors

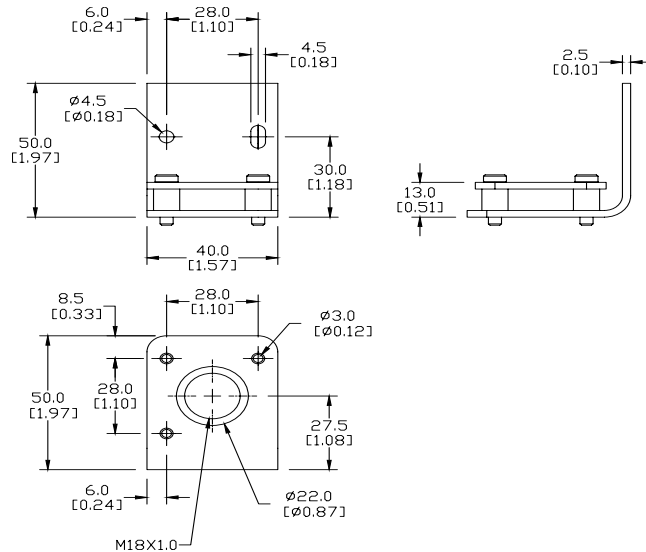
Right-angle Fine Tune Mounting Bracket

Mounting bracket, right-angle, fine tune vertical and horizontal adjustment, nickel-plated steel. For use with 18mm sensors. Allows for fine tuning vertical and horizontal placement.

Accessories for 18mm Sensors			
Part Number	Price	Description	Weight [lb]
OPT2036	\$30.00	Mounting bracket, right-angle, fine tune vertical and horizontal adjustment, nickel-plated steel. For use with 18mm sensors.	0.02

Dimensions

mm [inches]



OPT2036

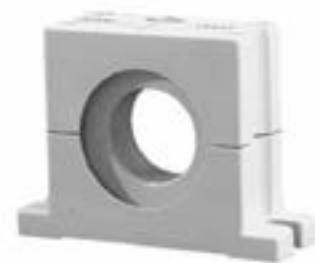
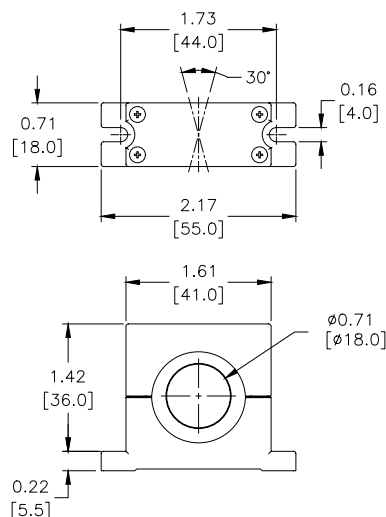
Swivel Mounting Bracket

Mounting bracket, ball swivel, plastic. For use with 18mm sensors. Has a ball-joint and set screws to adjust sensor orientation. Allows angular orientation up to 15 degrees (from center) in all directions for photoelectric sensors (Will not work with C18 series).

Accessories for 18mm Sensors			
Part Number	Price	Description	Weight [lb]
ST02	\$8.25	Mounting bracket, ball swivel, plastic. For use with 18mm sensors.	0.06

Dimensions

mm [inches]



ST02

See our website: www.AutomationDirect.com for complete engineering drawings

Accessories for 18mm Sensors

Right-angle Mounting Brackets

Mounting bracket, right-angle, fixed insertion stop adjustment, plastic. For use with 18mm sensors. Available with or without fixed insertion stop.

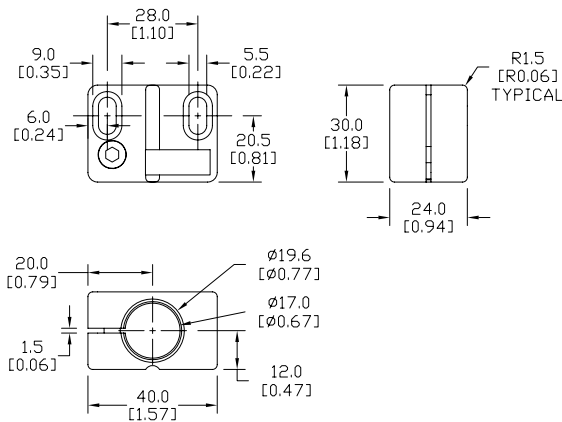
Accessories for 18mm Sensors				
Part Number	Price	Description	Weight [lb]	
OPT2104	\$8.00	Mounting bracket, right-angle, fixed insertion stop adjustment, plastic. For use with 18mm sensors.	0.06	
OPT2105	\$8.00	Mounting bracket, right-angle, plastic. For use with 18mm sensors.	0.06	



OPT2104, OPT2105

Dimensions

mm [inches]



Right-angle Swivel Mounting Systems

Mounting bracket, right-angle swivel, 360 degree vertical and horizontal adjustment, 12mm rod mount. For use with 18mm sensors. Available in all 304 stainless steel or with an aluminum head and a stainless steel mounting plate.

Accessories for 18mm Sensors					
Part Number	Price	Description	Mounting Head	Mounting Plate	Weight [lb]
OPT2116	\$9.00	Mounting bracket, right-angle swivel, 360 vertical and horizontal adjustment, aluminum, 12mm rod mount. For use with 18mm sensors.	Aluminum	304 Stainless Steel	0.15
OPT2117	\$16.00	Mounting bracket, right-angle swivel, 360 vertical and horizontal adjustment, 304 stainless steel, 12mm rod mount. For use with 18mm sensors.	304 Stainless Steel	304 Stainless Steel	0.28

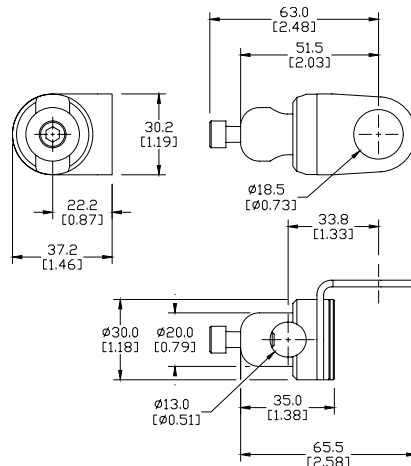
Note: 304 Stainless steel mounting rods sold separately: OPT2109 (200mm length), OPT2110 (300mm length), and OPT2111 (500mm length).



OPT2116, OPT2117

Dimensions

mm [inches]



See our website: www.AutomationDirect.com for complete engineering drawings

Mounting Rods

Mounting Rods

304 Stainless steel rods for mounting swivel brackets OPT2112 - OPT2127. Available in three lengths: 200mm, 300mm, and 500mm. 12mm diameter.

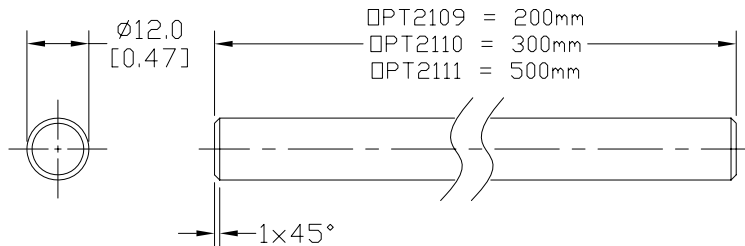
Mounting Rods for OPT2112-2127 Swivel Mounting Brackets			
Part Number	Price	Description	Weight [lb]
OPT2109	\$10.00	Mounting rod, 12mm diameter, 200mm length, 304 stainless steel.	0.41
OPT2110	\$12.00	Mounting rod, 12mm diameter, 300mm length, 304 stainless steel.	0.60
OPT2111	\$16.00	Mounting rod, 12mm diameter, 500mm length, 304 stainless steel.	0.98



OPT2109, OPT2110, OPT2111

Dimensions

mm [inches]



Right-angle Mounting Bracket

Mounting bracket, right-angle, nickel-plated brass. For use with 12mm mounting rods OPT2109, OPT2110 & OPT2111.

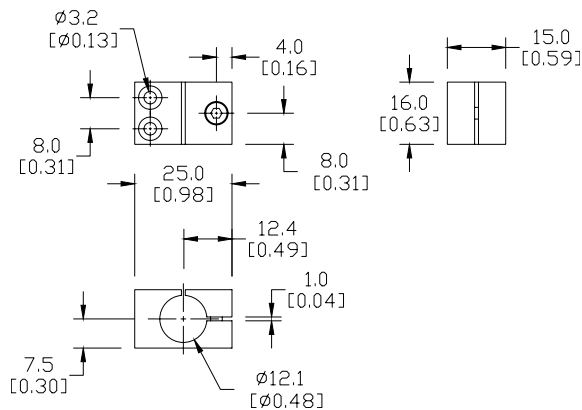
Accessories for 12mm Sensors			
Part Number	Price	Description	Weight [lb]
OPT2108	\$12.00	Mounting bracket, right-angle, nickel-plated brass. For use with 12mm mounting rods OPT2109, OPT2110 & OPT2111.	0.07



OPT2108

Dimensions

mm [inches]



See our website: www.AutomationDirect.com for complete engineering drawings

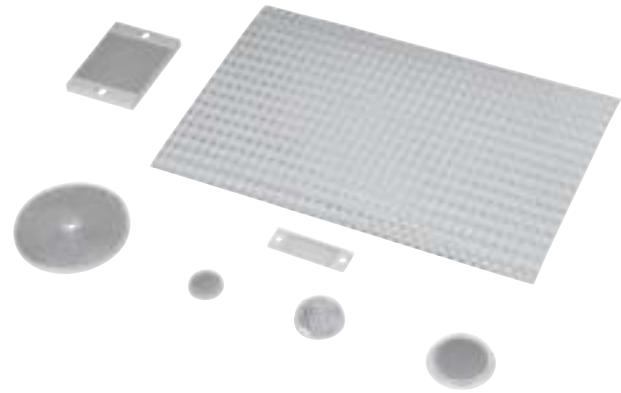
Reflectors

RL Series Reflectors for Polarized Reflective Photoelectric Sensors (All Models)

- Suitable for use with polarized light photoelectric sensors
- Shapes and sizes for most applications
- Miniature types for close mounting in multiple sensor installations
- Single hole, dual hole and self-adhesive mounting types available
- Single and 10-packs available

Installation Notes

- Keep the reflector surface clean to ensure peak detection performance. This is especially true when the maximum sensing range is being used. Clean using a damp cloth.
- When selecting a reflector, it is important to consider the ambient conditions it will be exposed to. Dusty or high humidity conditions may reduce the sensing range as much as 90%.
- Reflectors should be positioned at a 90° angle to the optical axis with a tolerance of ±15°.



Specifications							
Model	Price	Quantity	Dimensions	Degree of Protection	Mounting	Materials	
RL102	\$35.00	10 per pack	25mm [0.98 in]	IEC IP67	Customer-supplied adhesive or other mounting method required	Reflective face: PMMA Polymethylmethacrylate (acrylic) Base material: ABS (Acrylonitrile-butadiene-styren)	
RL102-1	\$3.75	1 per pack					
RL103	\$40.00	10 per pack	34.5 mm [1.36 in]				
RL103-1	\$4.25	1 per pack					
RL104	\$40.00	10 per pack	46mm [1.81 in]				
RL104-1	\$4.25	1 per pack					
RL105 *	\$35.00	10 per pack	90 x 40 mm [3.54 x 1.58 in]				Two 4.3 mm holes
RL105-1 *	\$3.75	1 per pack					
RL105G *	\$35.00	10 per pack	95 x 38 mm [3.74 x 1.50 in]				Two 6mm holes
RL105G-1 *	\$3.75	1 per pack					
RL106G	\$40.00	10 per pack	182 x 42 mm [7.17 x 1.65 in]		One 5mm hole		
RL106G-1	\$4.25	1 per pack					
RL110	\$18.00	10 per pack	84mm [3.31 in]		Two 3mm holes		
RL110-1	\$2.00	1 per pack					
RL116	\$18.00	10 per pack	41 x 60 mm [3.54 x 2.36 in]		Self-adhesive	Paper (Acrylic tape with micro prism)	
RL116-1	\$2.00	1 per pack					
RL100DA4	\$32.50	1 per pack	200 x 300 mm [7.87 x 11.81 in]		Two 3mm slots	Reflective face: PMMA Polymethylmethacrylate (acrylic) Base material: ABS (Acrylonitrile-butadiene-styren)	
RL100DC4	\$10.00	1 per pack	50 x 300 mm [1.97 x 11.81 in]				
RL100DQ1	\$7.50	1 per pack	100 x 100 mm [3.94 x 3.94 in]		Two 4mm slots		
RL111G	\$52.00	10 per pack	22.5 x 47 mm [0.89 x 21.85 in]				
RL111G-1	\$6.00	1 per pack					
RL112G	\$40.00	10 per pack	19 x 73 mm [0.75 x 2.87 in]				
RL112G-1	\$4.25	1 per pack					
RL113G	\$46.00	10 per pack	51.4 x 60.3 mm [2.02 x 2.37 in]				
RL113G-1	\$5.00	1 per pack					

Not recommended for applications involving moist air environments or water immersion.

* Note: RL105 and RL105-1 reflectors are being replaced by the RL105G and RL105G-1 models, and will no longer be available once our current stock is depleted.

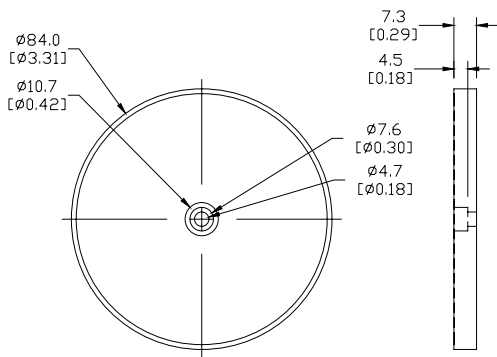
The new reflectors function the same but the dimensions are slightly different. Compare the outside dimensions shown in this table and the dimensional drawings on the next page.

Reflectors

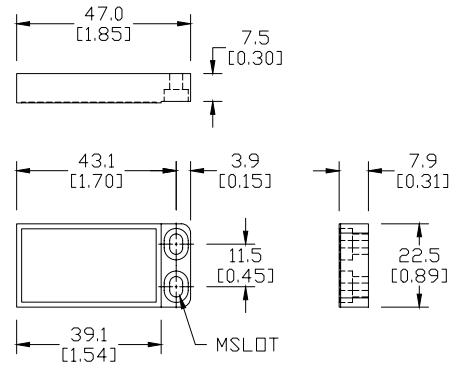
Dimensions

mm [inches]

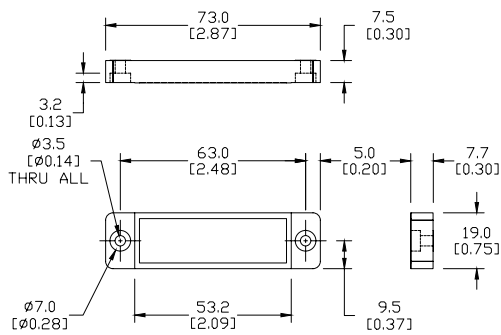
RL110/RL110-1



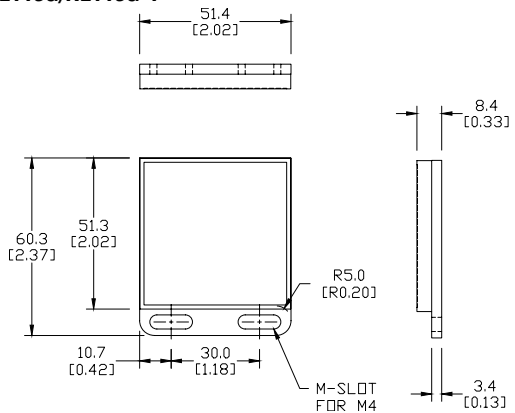
RL111G/RL111G-1



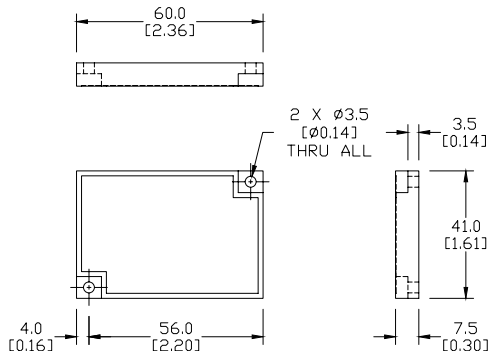
RL112G/RL112G-1



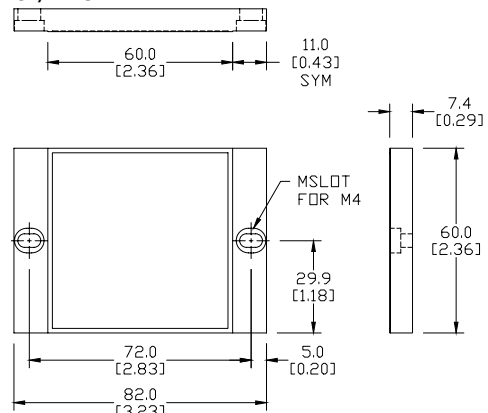
RL113G/RL113G-1



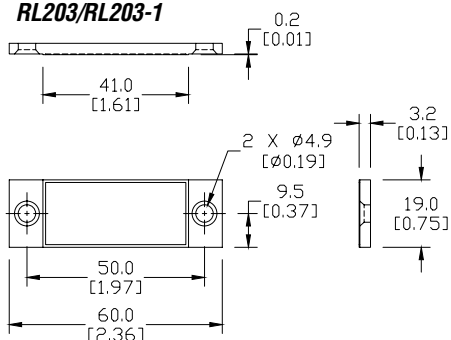
RL116/RL116-1



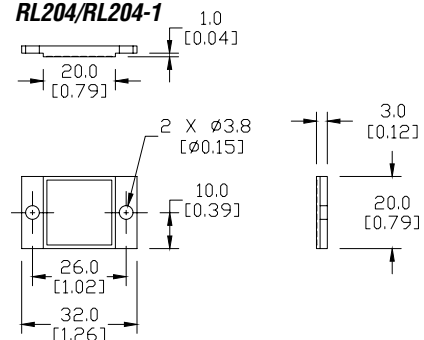
RL201/RL201-1



RL203/RL203-1



RL204/RL204-1



See our website: www.AutomationDirect.com for complete engineering drawings