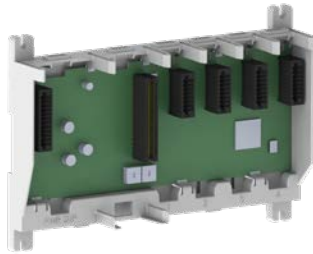


Productivity[®]2000 Overview

Bases

Four bases are available, with 4, 7, 11, or 15 slots.



Productivity2000 Bases

Part Number	Description	Price
<u>P2-04B</u>	4-slot base	\$108.00
<u>P2-07B</u>	7-slot base	\$145.00
<u>P2-11B</u>	11-slot base	\$195.00
<u>P2-15B</u>	15-slot base	\$228.00

Power Supply

Four power supplies are available. One accepts 24VDC, one accepts 24-48 VDC, the other two are dual voltage - one accepting 100-240 VAC or 125VDC and the other 24VAC or 12-24 VDC.

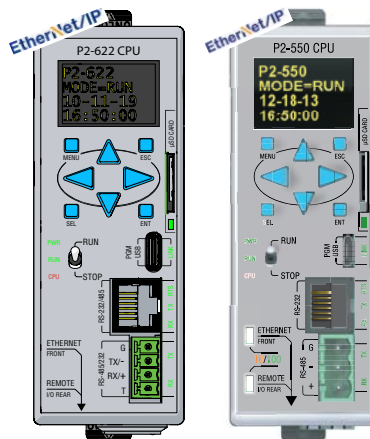


Productivity2000 Power Supplies

Part Number	Description	Price
<u>P2-01DC</u>	Power supply (24-48 VDC source)	\$117.00
<u>P2-02DC</u>	Power supply (24VDC source)	\$86.00
<u>P2-01AC</u>	Power supply (100-240 VAC or 125VDC source)	\$105.00
<u>P2-01DCAC</u>	Power supply (24VAC or 12-24 VDC source)	\$120.00

CPU Module

Two CPU modules are currently available - P2-622 and P2-550.

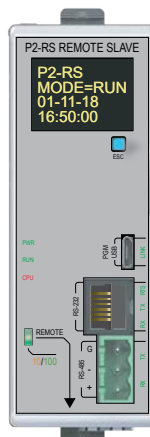


Productivity2000 CPU Module

Part Number	Description	Price
<u>P2-550</u>	CPU module	\$365.00
<u>P2-622</u>	CPU module	\$302.00

Remote Slave Module

One remote slave module is currently available.



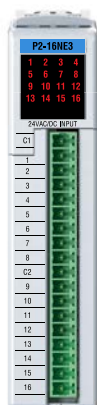
Productivity2000 Remote Slave Module

Part Number	Description	Price
<u>P2-RS</u>	Remote Slave module	\$332.00

Productivity®2000 Overview

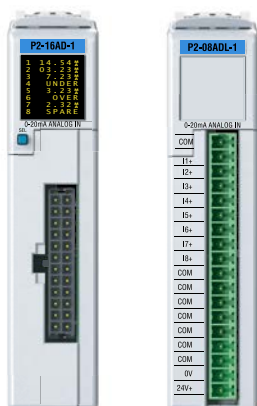
Discrete I/O Modules

Nine discrete input and fourteen discrete output modules are available.



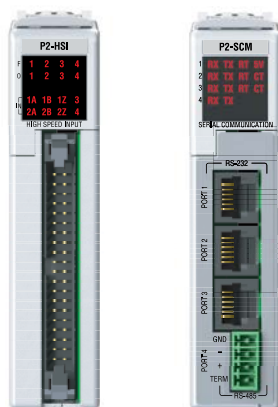
Analog I/O Modules

14 analog input, 13 analog output, and 2 analog input/output combo modules are available.



Specialty Modules

A selection of specialty modules provide high-speed capabilities and additional serial communication ports.



Discrete Input Modules

Part Number	Description	Price
P2-08SIM	Input Simulator	\$69.00
P2-08ND3-1	Sinking/Sourcing 12-24 VDC	\$72.00
P2-16ND3-1	Sinking/Sourcing 12-24 VDC	\$100.00
P2-32ND3-1	Sinking/Sourcing 12-24 VDC	\$148.00
P2-08NE3	Sinking/Sourcing 24V AC/DC	\$59.00
P2-16NE3	Sinking/Sourcing AC/DC	\$101.00
P2-32NE3	Sinking/Sourcing 24V AC/DC	\$148.00
P2-08NAS	AC Isolated 100-120 VAC	\$113.00
P2-16NA	AC Input 100-240 VAC	\$154.00

Discrete Output Modules

Part Number	Description	Price
P2-08TD1S	Isolated Sinking	\$70.00
P2-08TD2S	Isolated Sourcing	\$70.00
P2-15TD1	Sinking	\$97.00
P2-15TD2	Sourcing	\$95.00
P2-08TD1P	Sinking Protected	\$60.00
P2-08TD2P	Sourcing Protected	\$60.00
P2-16TD1P	Sinking Protected	\$101.00
P2-16TD2P	Sourcing Protected	\$101.00
P2-32TD1P	Sinking Protected	\$148.00
P2-32TD2P	Sourcing Protected	\$148.00
P2-08TAS	Isolated AC	\$154.00
P2-16TA	AC Output	\$190.00
P2-08TRS	Isolated Relay	\$73.00
P2-16TR	Relay	\$137.00

Analog Input Modules

Part Number	Description	Price
P2-04AD	Voltage/Current	\$288.00
P2-04AD-1	Current	\$217.00
P2-04AD-2	Voltage	\$224.00
P2-08AD-1	Current	\$303.00
P2-08AD-2	Voltage	\$333.00
P2-08ADL-1*	Current	\$212.00
P2-08ADL-2*	Voltage	\$230.00
P2-16AD-1	Current	\$366.00
P2-16AD-2	Voltage	\$406.00
P2-16ADL-1*	Current	\$261.00
P2-16ADL-2*	Voltage	\$289.00
P2-06RTD	RTD	\$476.00
P2-08NTC	Thermistor	\$424.00
P2-08THM	Thermocouple	\$468.00

* Low resolution analog modules without OLED display.

Analog Output Modules

Part Number	Description	Price
P2-04DA	Voltage/Current	\$286.00
P2-04DA-1	Current	\$217.00
P2-04DA-2	Voltage	\$212.00
P2-04DAL-1*	Current	\$162.00
P2-04DAL-2*	Voltage	\$151.00
P2-08DA-1	Current	\$398.00
P2-08DA-2	Voltage	\$365.00
P2-08DAL-1*	Current	\$297.00
P2-08DAL-2*	Voltage	\$288.00
P2-16DA-1	Current	\$521.00
P2-16DA-2	Voltage	\$499.00
P2-16DAL-1*	Current	\$371.00
P2-16DAL-2*	Voltage	\$355.00

* Low resolution analog modules without OLED display.

Analog Input/Output Modules

Part Number	Description	Price
P2-8AD4DA-1	Current	\$456.00
P2-8AD4DA-2	Voltage	\$456.00

Specialty Modules

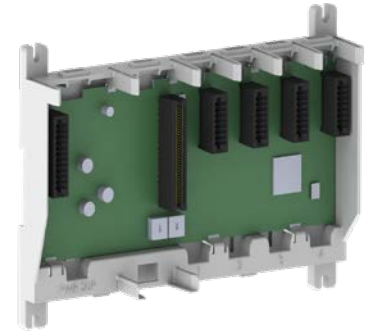
Part Number	Description	Price
P2-HSI	High-speed input	\$288.00
P2-HSO	High-speed output	\$288.00
P2-04PWM	High-speed pulse-width modulation	\$132.00
P2-02HSC	High-speed counter	\$120.00
P2-SCM	Serial communications module	\$242.00

Productivity®2000 Overview

What you'll need:

Of course, what you'll need for your system depends on your particular application however, this overview shows you what you'll need for a simple system.

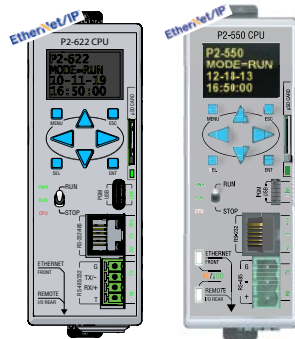
1. Select and order your base.



2. Select one of the four available power supplies.



3. Order the CPU module.



4. Order USB or Download (Free!) and install the Productivity Suite programming software onto your PC.



5. Select and order your I/O modules.

At the same time, select and order your ZIPLink wiring system or removable terminal blocks.



6. Select your PC-to-CPU programming cable.

You will need a standard USB Type A to Micro USB Type B cable or Ethernet cable (Cross-over or Straight) for programming.



7. Select tools, wire, and provide power.

Screwdriver
TW-SD-MSL-1



Wire Strippers
DN-WS



Hookup Wire



Programming Software

PS-PGMSW FREE OnLine Download

Productivity Suite is user-friendly programming software designed to allow quick and easy programming of ladder logic programs for the Productivity® 1000, Productivity® 2000 and Productivity3000® CPUs.

The online help file provides information that will help you get acquainted with the software quickly.

PC Requirements

Productivity Suite, a Windows-based programming software, is available as a FREE download at <http://support.automationdirect.com/downloads.html>. Please check our website for your product's current operating system requirements.

Programming Cable

You will need a Micro USB or Cat-5 Ethernet cable for programming, depending on whether you use the USB or Ethernet programming port.

We recommend using a USB programming cable; just plug it in and it works. We sell these USB Type A to Micro Type B USB cables:

- [USB-CBL-AMICB6](#) (6 ft.)
- [USB-CBL-AMICB15](#) (15 ft.)
- [USB-CBL-AC6](#) (6 ft.)



Main window

The Main Window is displayed when the program opens. It is divided into Menus, Toolbars, and Windows that work together to make project development as simple as possible.

