

Features

Nylon Angle Adapter

- Converts 20A and 30A nylon locking plugs and connectors into space saving angle devices
- Adapters permit wire to exit parallel to the receptacle; eliminating space needed for wire to bend

Weather Protective Boots; 5200 Series

- For use with Bryant 15 and 20 Amp straight blade plugs and connectors and 15 Amp locking plug and connectors
- Help prevent moisture, dust and other contaminants from infiltrating plugs and connectors
- Available in high visibility yellow or standard black
- Thermoplastic elastomer construction
- Excellent ozone and weather resistance
- Resistant to deterioration by oils and heat
- IP 55 Suitability when installed and used properly with plug and connector body combinations
- Connector sealing ring provides extra protection when plug and connector are not mated
- Ribbed exterior provides firm grip

Weather Protective Boots; 7200 Series

- For use with Bryant 20 and 30 Amp locking plugs and connectors
- Help prevent moisture, dust and other contaminants from infiltrating plugs and connectors
- Chemical/UV-resistant construction
- Available in high visibility yellow or standard black
- Ribbed exterior provides firm grip
- Sealing ring seals connector when not mated
- For use with Bryant Triple Gripper® 20 and 30 Amp nylon plugs and connectors
- IP 55 Suitability when installed and used properly with plug and connector body combinations

Stainless Steel Cover Plates

Approvals

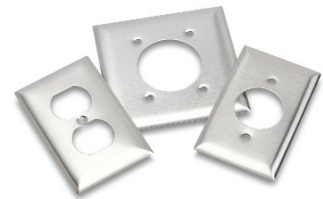
- UL File E31999*
- CSA Certified 18416*



*Approvals for stainless steel receptacle plates only.

Wiring Devices Accessories		
Part Number	Description	Price
Cover Plates		
SS8	Duplex receptacle plate, stainless steel, 15A and 20A straight blade, single-gang box	<--->
SS7	Single receptacle plate, stainless steel, 15A and 20A straight blade, 15A locking, single-gang box	<--->
SS723	Single receptacle plate, stainless steel, 30A straight blade, single-gang box	<--->
SS703	Single receptacle plate, stainless steel, 30A straight blade, two-gang box	<--->
SS720	Single receptacle plate, stainless steel, 20A and 30A locking, single-gang box	<--->
Angle Adapter*		
70204ANA	Angle adapter for 20A and 30A locking plugs and connectors	<--->
Weather Boots*		
5200BP	Weather boot for 15A locking, 15A straight, and 20A straight blade plugs. YELLOW thermoplastic elastomer	<--->
5200BC	Weather boot for 15A locking, 15A straight, and 20A straight blade connector. YELLOW thermoplastic elastomer	<--->
5200BSR	Connector boot sealing ring for 5200BC boot. YELLOW thermoplastic elastomer	<--->
5200BPB	Weather boot for 15A locking, 15A straight, and 20A straight blade plugs. BLACK thermoplastic elastomer	<--->
5200BCB	Weather boot for 15A locking, 15A straight, and 20A straight blade connector. BLACK thermoplastic elastomer	<--->
5200BSRB	Connector boot sealing ring for 5200BC boot. BLACK thermoplastic elastomer	<--->
72002BC	Weather boot for 20A and 30A locking plug. YELLOW neoprene	<--->
72002BP	Weather boot for 20A and 30A locking connector. YELLOW neoprene	<--->
72002BSR	Connector boot sealing ring for 72002BC boot. YELLOW thermoplastic elastomer	<--->
72002BPB	Weather boot for 20A and 30A locking plugs. BLACK thermoplastic elastomer	<--->
72002BCB	Weather boot for 20A and 30A locking connectors. BLACK thermoplastic elastomer	<--->
72002BSRB	Connector boot sealing ring for 72002BCB boot. BLACK thermoplastic elastomer	<--->

*Angle adapter and weather boots are not UL listed or CSA certified.



Stainless Steel Receptacle Plates



Angle Adapter 70204ANA

Wiring Devices – Accessories



**72002BC
Weather Boot**



**72002BC with 72002BSR
Connector Boot sealing ring**

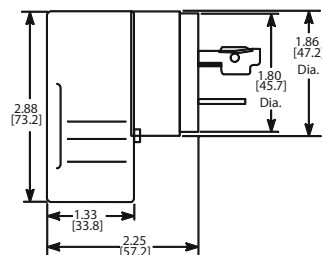
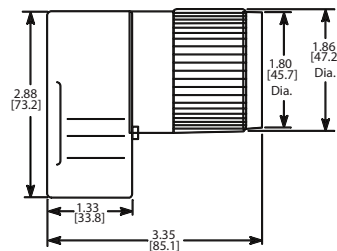
Note: Connectors shown on above installations are not included and are purchased separately.



**Angle Adapter
70204ANA**



Angle Adapter Dimensions

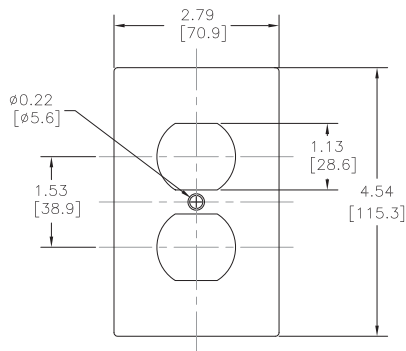


Dimensions: in [mm]

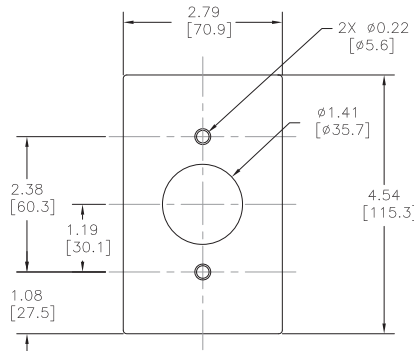
Angle Adapter

Wiring Devices – Accessories Drawings

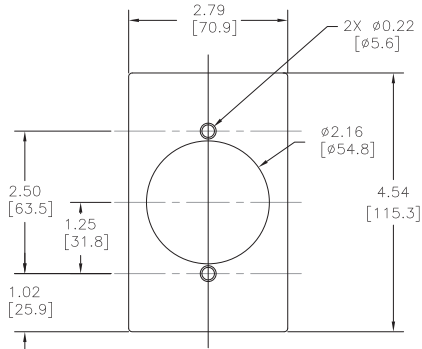
Stainless Steel Cover Plates



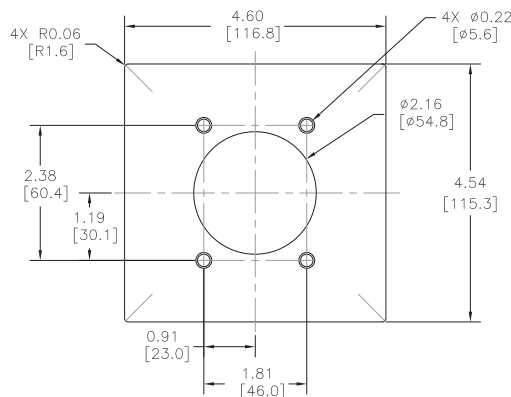
SS8



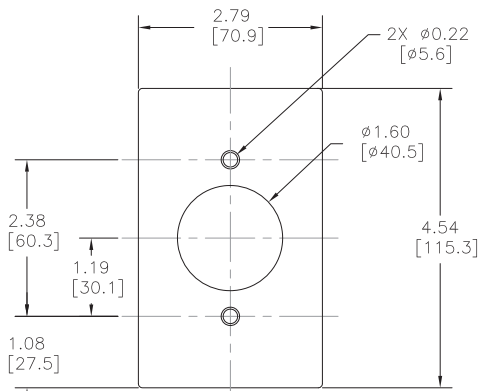
SS7



SS723



SS703



SS720

Dimensions: in [mm]

- Company Info.
- PLCs
- Field I/O
- Software
- C-more & other HMI
- AC Drives
- AC Motors
- Power Transmiss.
- Steppers/Servos
- Motor Controls
- Proximity Sensors
- Photo Sensors
- Limit Switches
- Encoders
- Current Sensors
- Pressure Sensors
- Temp. Sensors
- Pushbuttons/Lights
- Process
- Relays/Timers
- Comm.
- Terminal Blocks & Wiring**
- Power
- Circuit Protection
- Enclosures
- Tools
- Pneumatics
- Appendix
- Part Index

Wiring Devices – Technical Information

Reference material only. Please see Wiring Section in the catalog for product part number.

Mechanical And Electrical Properties Of Materials							
Properties	6/6 Nylon	6 Nylon	Polycarbonate	PC/PET	Phenolic	Urea	
Tensile Strength (PSI)	11,000	6,000*	9,000	6,000	6,500-10,000	5,500-13,000	
Elongation (%)	300+*	300*	130	120	0.4 - 0.8	0.5 - 1.0	
Flex. Mod. (Stiffness)(PSI)	175,000*	140,000*	340,000	325,000	1,000,000	1,500,000	
Izod (Notched) ft.-lb./in.	2.1 lb-in [0.24 Nm]*	3.0 lb-in [0.34 Nm]*	15.0 lb-in [1.7 Nm]	12.0 lb-in [1.36Nm]	0.3 to 1.9 lb-in [.034 to 0.21 Nm]	0.25 to 0.4 lb-in [0.03 to 0.05 Nm]	
Hardness Rockwell	59M* 108R*	- 119R	70M 118R	- 115R	105-120M -	110-120M -	
Heat Deflection Temp	66 PSI	464°F (240°C)	370°F (187.7°C)	-	265°F (129.4°C)	-	-
	264 PSI	194°F (90°C)	185°F (85°C)	270°F (132°C)	260°F (126.6°C)	400°F (204.4°C)	260 to 290°F (126.6 to 143.3°C)
UL Thermal Index	Electrical	257°F (125°C)	257°F (125°C)	257°F (125°C)	221°F (105°C)	302°F (150°C)	212°F (100°C)
	Mechanical w/ Impact	167°F (75°C)	167°F (75°C)	239°F (115°C)			
	Mechanical w/o Impact	185°F (85°C)	185°F (85°C)	257°F (125°C)			
Flame Class UL 94	V-2	V-2	V-2	V-0	HB-V0	HB-V0	
Dielectric V/mil	600	400	380	307	200-400	300-400	
Specific Gravity	1.14	1.13	1.2	1.33	1.4	1.5	
UL Comparative Tracking Index (Volts)	600+	600+	250+	230	175+	600+	

*Conditioned to 50% relative humidity

Chemical Resistance Of Materials				
Chemical	Nylon	Phenolic	Urea	Polycarbonate
Acids	C	B	B	A
Alcohol	A	A	A	B
Caustic Bases	A	B	B	C
Gasoline	A	A	C	A
Grease	A	A	A	B
Kerosene	A	A	A	A
Oil	A	A	A	B
Solvents	A	A	A	C
Water	A	A	A	A

Note: A - Completely resistant. Good to excellent, general use.

B - Resistant. Fair to good, limited service.

C - Slow attack. Not recommended for use.

Wiring Devices – Technical Information

Company Info.

PLCs

Field I/O

Software

C-more & other HMI

AC Drives

AC Motors

Power Transmiss.

Steppers/ Servos

Motor Controls

Proximity Sensors

Photo Sensors

Limit Switches

Encoders

Current Sensors

Pressure Sensors

Temp. Sensors

Pushbuttons/ Lights

Process

Relays/ Timers

Comm.

Terminal Blocks & Wiring

Power

Circuit Protection

Enclosures

Tools

Pneumatics

Appendix

Part Index

Table III - Horsepower Ratings			
NEMA Configuration	AC HP Rating**	Nema Configuration	AC HP Rating**
1-15	0.5	L1-15	0.5
2-15	1.5	L2-20	2
2-20	2	L5-15	0.5
2-30	2	L5-20	1
5-15	0.5	L5-30	2
5-20	1	L6-15	1.5
5-30	2	L6-20	2
5-50	2	L6-30	2
6-15	1.5	L7-15	2
6-20	2	L7-20	2
6-30	2	L7-30	3
6-50	3	L8-20	3
7-15	2	L8-30	5
7-20	2	L10-20	2 L-L/1 L-N
7-30	3	L10-30	2 L-L/2 L-N
7-50	5	L11-15	2
10-20	2 L-L/1 L-N	L11-20	3
10-30	2 L-L/2 L-N	L11-30	3
10-50	3 L-L/2 L-N	L12-20	5
11-15	2	L12-30	10
11-20	3	L14-20	2 L-L/1 L-N
11-30	3	L14-30	2 L-L/2 L-N
11-50	7.5	L15-20	3
14-15	1.5 L-L/0.5 L-N	L15-30	3
14-20	2 L-L/1 L-N	L16-20	5
14-30	2 L-L/2 L-N	L16-30	10
14-50	3 L-L/2 L-N	L18-20	2
14-60	3 L-L/2 L-N	L18-30	3
15-15	2	L19-20	5
15-20	3	L19-30	10
15-30	3	L21-20	2
15-50	7.5	L21-30	3
15-60	10	L22-20	5
18-15	2	L22-30	10
18-20	2		
18-30	3		
18-50	7.5		
18-60	7.5		

**The phase-to-phase horsepower ratings are noted by "L-L". The phase-to-neutral ratings are identified by "L-N"