

Dinosaur Flexible Wiring Duct

Overview

Dinosaur self-adhesive flexible duct is ideal for transporting wiring to cabinet doors from control panel interiors (for that part of the cable run that leans against the side of the control cabinet) and for electronic equipment. It is resilient and can be bent and twisted without breaking. Manufactured from low-smoke, halogen-free polypropylene material, it carries a UL 94V-0 flammability rating and CSA approval.



Features

- Easily add or remove individual wires from total wires within the duct
- Enclose and secure wiring or cables without requiring duct cover
- Convenient for applications requiring frequent access to wiring
- Easy addition or removal of wires after termination without special tools
- Use in extreme operating conditions (max temp. up to 176°F [80°C])
- Withstands mechanical stress when installed (i.e. earthquake, falling equipment)
- Cut to desired length using scissors or knife



Note: Make sure the surface is perfectly clean and dry before applying self-adhesive wiring duct.

UL file E123572



White Flexible, Self-Adhesive Duct							
Catalog Number Standard Carton	Package Quantity	Price	Total Actual Length ft (m)	Catalog Number Single Piece Pkg	Package Quantity	Price	Total Actual Length ft (m)
DN10AW	42	<--->	68.95 (21)	DN10AW-1	1	<--->	1.64 (0.5)
DN20AW	64	<--->	105.06 (32)	DN20AW-1	1	<--->	1.64 (0.5)
DN30AW	36	<--->	59.1 (18)	DN30AW-1	1	<--->	1.64 (0.5)
DN40AW	20	<--->	32.83 (10)	DN40AW-1	1	<--->	1.64 (0.5)

Gray Flexible, Self-Adhesive Duct							
Catalog Number Standard Carton	Package Quantity	Price	Total Actual Length ft (m)	Catalog Number Single Piece Pkg	Package Quantity	Price	Total Actual Length ft (m)
DN10AG*	42	<--->	68.95 (21)	not available	–	<--->	–
DN20AG*	64	<--->	105.06 (32)	not available	–	<--->	–
DN25AG	24	<--->	39.4 (12)	DN25AG-1	1	<--->	1.64 (0.5)
DN30AG*	36	<--->	59.1 (18)	not available	–	<--->	–
DN35AG	24	<--->	39.4 (12)	DN35AG-1	1	<--->	1.64 (0.5)
DN40AG*	20	<--->	32.83 (10)	not available	–	<--->	–
DN45AG	14	<--->	23.0 (7)	DN45AG-1	1	<--->	1.64 (0.5)

* These parts are being obsoleted and are no longer UL recognized.

Adhesive-Backed Tape Specifications	
Material	Double coated PET film backing, modified acrylic adhesive
Applicable Mounting Surfaces	Paper, cardboard, wood, glass, ceramics, metal, rubber and many plastics
Recommended Tape Application Temperature	65 to 95°F (18 to 35°C)
Thickness	0.2 mm
Note: Make sure the surface is perfectly clean and dry before applying self-adhesive wiring duct.	

Nominal Duct Size (in inches)	Wire Fill Capacity					
	12 AWG	14 AWG	16AWG	18 AWG	22 AWG	
	Insulation Thickness (in inches)					
	1/32	3/64	1/32	1/32	1/32	1/64
	OD-0.158	OD-0.165	OD-0.139	OD-0.125	OD-0.113	OD-0.065
	Recommended Maximum Number of Wires per Wiring Duct (based on 50% fill capacity)					
1/2 x 1/2	6	5	7	9	11	33
3/4 x 3/4	13	12	6	20	25	75
1/2 x 3/4	8	8	11	13	16	50
1 x 1	23	21	29	36	44	133
1 x 1 3/8	31	28	40	50	61	183
1 1/2 x 1 1/2	51	46	65	81	99	299
1 3/8 x 1 3/4	54	50	70	87	106	321

Dinosaur Flexible Wiring Duct

Mounting Overview

The base perforation of the DN series self-adhesive flexible wiring duct also allows mounting on the panel with rivets (R6 or R4), or on DIN rail, if desired.

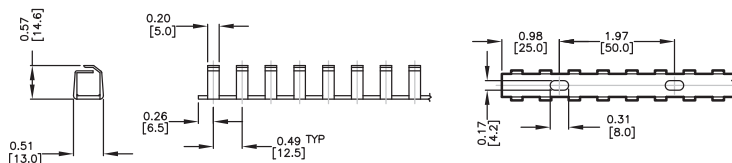
Note: Duct base perforation according to DIN 43659 and DIN VDE 0660 TEIL 506.

Flexible, Self-Adhesive Duct Dimensions			
Nominal Size (WxH) inches (mm)	Catalog Part Number		Length per piece
	Gray	White	
0.5 x 0.5 (12.7 x 12.7)	DN10AG	DN10AW ★	19.7" (500 mm)
0.75 x 0.75 (19.05 x 19.05)	DN20AG	DN20AW ★	19.7" (500 mm)
0.5 x 0.75 (12.7 x 19.05)	DN25AG ★		19.7" (500 mm)
1.0 x 1.0 (25.4 x 25.4)	DN30AG	DN30AW ★	19.7" (500 mm)
1.0 x 1.38 (25.4 x 35.05)	DN35AG ★		19.7" (500 mm)
1.5 x 1.5 (38.1 x 38.1)	DN40AG	DN40AW ★	19.7" (500 mm)
1.38 x 1.75 (35.05 x 44.45)	DN45AG ★		19.7" (500 mm)

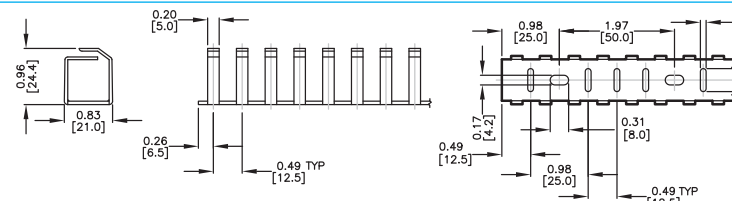
★ Package: This product available in single-piece packaging. Add "-1" for single piece package.

Dimensions

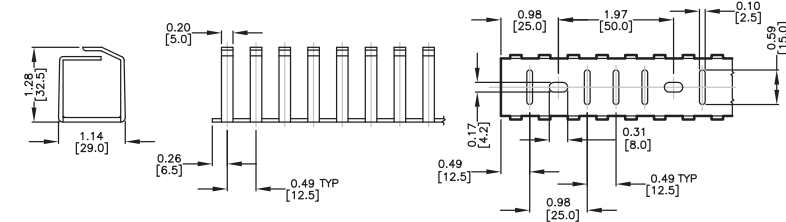
DN10A



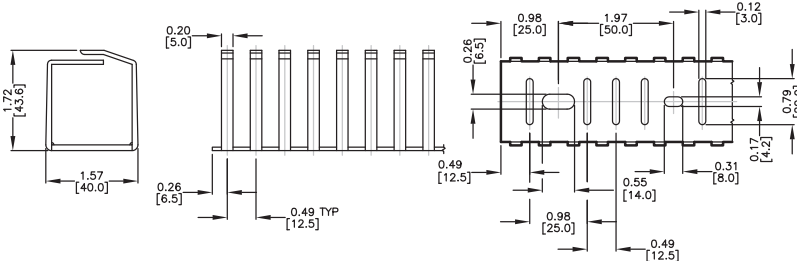
DN20A



DN30A



DN40A



Note: Dimensions are in inches (mm).

