


# KS 71 Elements Quick Selection Guide

STEP 1 - Optical Elements Quick Selection Guide										
Type of Light	Part Number	Color	Operating Voltage	Price	Type of Light	Part Number	Color	Operating Voltage	Price	
Incandescent Permanent*	<a href="#">64110000</a>	Red	Depends on bulb selection (bulb sold separately)		Xenon Flashing Light	<a href="#">64310055</a>	Red	24 VDC		
	<a href="#">64120000</a>	Green		<a href="#">64320055</a>		Green				
	<a href="#">64130000</a>	Yellow		<a href="#">64330055</a>		Yellow				
	<a href="#">64140000</a>	Clear		<a href="#">64340055</a>		Clear				
	<a href="#">64150000</a>	Blue		<a href="#">64350055</a>		Blue				
Incandescent Bulbs	<a href="#">95584035</a>		24 VAC/VDC			<a href="#">64310067</a>	Red	115 VAC		
	<a href="#">95584038</a>		230 VAC	<a href="#">64320067</a>		Green				
	<a href="#">95584057</a>		115 VAC/VDC	<a href="#">64330067</a>		Yellow				
LED Permanent	<a href="#">64410075</a>	Red	24 VAC/VDC			<a href="#">64340067</a>	Clear		24 VAC/VDC	
	<a href="#">64420075</a>	Green		<a href="#">64350067</a>		Blue				
	<a href="#">64430075</a>	Yellow		<a href="#">64411075</a>		Red				
	<a href="#">64440075</a>	Clear		<a href="#">64421075</a>		Green				
	<a href="#">64450075</a>	Blue		<a href="#">64431075</a>		Yellow				
	<a href="#">64445055**</a>	Multi	24 VDC	<a href="#">64441075</a>		Clear				
	<a href="#">64410067</a>	Red	115 VAC			<a href="#">64451075</a>	Blue	115 VAC		
	<a href="#">64420067</a>	Green		<a href="#">64411067</a>	Red					
	<a href="#">64430067</a>	Yellow		<a href="#">64421067</a>	Green					
	<a href="#">64440067</a>	Clear		<a href="#">64431067</a>	Yellow					
	<a href="#">64450067</a>	Blue		<a href="#">64441067</a>	Clear					
	LED Flashing Light	<a href="#">64412055</a>	Red	24 VDC		<a href="#">64451067</a>	Blue	24 VAC/VDC		
<a href="#">64422055</a>		Green	<a href="#">64413075</a>		Red					
<a href="#">64432055</a>		Yellow	<a href="#">64423075</a>		Green					
<a href="#">64442055</a>		Clear	<a href="#">64433075</a>		Yellow					
<a href="#">64452055</a>		Blue	<a href="#">64443075</a>		Clear					
					<a href="#">64453075</a>	Blue				

\* Bulbs are required for permanent incandescent optical element.

\*\* The multicolor element can be combined with up to 2 additional signal elements.

## STEP 2 - Audible Elements Selection

Part Number	Description	Voltage	Tone Frequency	Max. Volume @ 1m	Price
<a href="#">64580075</a>	Buzzer element	24 VAC/VDC	1.75 kHz	85 dB	
<a href="#">64580077</a>		115 VAC			
<a href="#">64585055</a>	Multi-functional siren, external trigger	24 VDC	1.6 / 3.4 kHz	100 dB	
<a href="#">64581055</a>	Siren element with self-adjusting sound output	24 VDC	2.5 kHz	100 dB	

## STEP 5 - Contact Boxes & Brackets Selection

Mounting Option	Part Number	Description	Price
Plain Base Mount	<a href="#">97584001</a>	Contact box with side exit cable	
	<a href="#">96000002</a>	Bracket for base mounting	
	<a href="#">97584085</a>	Bracket for 1-sided mounting	
	<a href="#">97584086</a>	Bracket for 2-sided mounting	
Tube Base Mount	<a href="#">97584001</a>	Contact box with side exit cable	
	<a href="#">97584004</a>	Contact box w/ magnetic base and side cable exit	
	<a href="#">96000014</a>	Bracket for base mounting w/ concealed cable entry	
	<a href="#">96000001</a>	Bracket for tube mounting	

## STEP 3 - Terminal Elements Selection

Part Number	Description	Mounting	Price
<a href="#">64082000</a>	Screw terminal with M3 clamps	base bracket	
<a href="#">64080000</a>	Terminal element with CAGE CLAMP® technology		
<a href="#">64083000</a>	Screw terminal with M3 clamps	tube	
<a href="#">64081000</a>	Terminal element with CAGE CLAMP® technology		

## STEP 4 - Tube Mounting/Accessories Selection

Part Number	Description	Price
<a href="#">97584510</a>	Anodized tube, 100mm [3.94in] long	
<a href="#">97584025</a>	Anodized tube, 250mm [9.84in] long	
<a href="#">97584040</a>	Anodized tube, 400mm [15.75in] long	
<a href="#">97584060</a>	Anodized tube, 600mm [23.62in] long	
<a href="#">97584080</a>	Anodized tube, 800mm [31.49in] long	
<a href="#">97584003</a>	Anodized tube, 1000mm [39.37in] long	
<a href="#">96000018</a>	Tube with clamp	
<a href="#">96000025</a>	Adapter for single-hole mounting	
<a href="#">97584010</a>	Base with integrated tube	
<a href="#">97584090</a>	Plastic base for 25mm [0.98in] diameter tube	
<a href="#">97584091</a>	Metal base for 25mm [0.98in] diameter tube	
<a href="#">96000031</a>	Plastic tube for foldaway base	
<a href="#">97584002</a>	Adapter for tube mounting	
<a href="#">96000004</a>	Cable gland for surface mounting	
<a href="#">96000030</a>	Foldaway base	

# KS 71 Optical Elements Specifications

Optical Elements Technical Specifications												
Part Number	Color	Drawing Link	Description	Voltage	Current	Starting Current	Operating Temp/ Protection	Life Duration	Flash Frequency	Housing Material	Weight g [oz]	
<a href="#">64110000</a>	Red	<a href="#">PDF</a>	Incandescent Permanent Light Element with B15d Bayonet Socket	12-240 VAC/VDC Depends on bulb selection. (bulb sold separately)	Depends on bulb selection. (bulb sold separately)	-	-20 to +60 °C [-4 to +140 °F]  IP65	up to 5,000h	-	Polycarbonate	55 [1.94]	
<a href="#">64120000</a>	Green	<a href="#">PDF</a>										
<a href="#">64130000</a>	Yellow	<a href="#">PDF</a>										
<a href="#">64140000</a>	Clear	<a href="#">PDF</a>										
<a href="#">64150000</a>	Blue	<a href="#">PDF</a>										
<a href="#">64410075</a>	Red	<a href="#">PDF</a>	LED Permanent Light Element	24 VAC/VDC	max. 30 mA	max. 500 mA	-20 to +50 °C [-4 to +122 °F]  IP65	up to 100,000h	-	Polycarbonate	58 [2.05]	
<a href="#">64420075</a>	Green	<a href="#">PDF</a>			max. 25 mA							
<a href="#">64430075</a>	Yellow	<a href="#">PDF</a>			max. 30 mA							
<a href="#">64440075</a>	Clear	<a href="#">PDF</a>			max. 25 mA							
<a href="#">64450075</a>	Blue	<a href="#">PDF</a>			max. 25 mA							
<a href="#">64445055</a>	Multi	<a href="#">PDF</a>		24 VDC	max. 120 mA			up to 50,000h				63 [2.22]
<a href="#">64410067</a>	Red	<a href="#">PDF</a>		115 VAC	max. 20 mA	-	-20 to +50 °C [-4 to +122 °F]  IP65	up to 100,000h	-	Polycarbonate	58 [2.05]	
<a href="#">64420067</a>	Green	<a href="#">PDF</a>										
<a href="#">64430067</a>	Yellow	<a href="#">PDF</a>										
<a href="#">64440067</a>	Clear	<a href="#">PDF</a>										
<a href="#">64450067</a>	Blue	<a href="#">PDF</a>										
<a href="#">64412055</a>	Red	<a href="#">PDF</a>	LED Flashing Light Element	24 VDC	35 mA	max. 500 mA	-20 to +50 °C [-4 to +122 °F]  IP65	up to 50,000h	1 Hz on for 2x10 ms	Polycarbonate	75 [2.65]	
<a href="#">64422055</a>	Green	<a href="#">PDF</a>										
<a href="#">64432055</a>	Yellow	<a href="#">PDF</a>										
<a href="#">64442055</a>	Clear	<a href="#">PDF</a>										
<a href="#">64452055</a>	Blue	<a href="#">PDF</a>										
<a href="#">64310055</a>	Red	<a href="#">PDF</a>										Xenon Flashing Light Element
<a href="#">64320055</a>	Green	<a href="#">PDF</a>										
<a href="#">64330055</a>	Yellow	<a href="#">PDF</a>										
<a href="#">64340055</a>	Clear	<a href="#">PDF</a>										
<a href="#">64350055</a>	Blue	<a href="#">PDF</a>										
<a href="#">64310067</a>	Red	<a href="#">PDF</a>	115 VAC	22 mA	-	-20 to +50 °C [-4 to +122 °F]  IP65	up to 4,000,000 flashes	1 Hz on for 10 ms	Polycarbonate	74 [2.61]		
<a href="#">64320067</a>	Green	<a href="#">PDF</a>										
<a href="#">64330067</a>	Yellow	<a href="#">PDF</a>										
<a href="#">64340067</a>	Clear	<a href="#">PDF</a>										
<a href="#">64350067</a>	Blue	<a href="#">PDF</a>										
<a href="#">64411075</a>	Red	<a href="#">PDF</a>	LED Blinking Light Element	24 VAC/VDC	max. 30 mA	max. 500 mA	-20 to +50 °C [-4 to +122 °F]  IP65	up to 100,000h	1 Hz on for 550 ms	Polycarbonate	58 [2.05]	
<a href="#">64421075</a>	Green	<a href="#">PDF</a>			max. 25 mA							
<a href="#">64431075</a>	Yellow	<a href="#">PDF</a>			max. 30 mA							
<a href="#">64441075</a>	Clear	<a href="#">PDF</a>			max. 25 mA							
<a href="#">64451075</a>	Blue	<a href="#">PDF</a>			max. 25 mA							
<a href="#">64411067</a>	Red	<a href="#">PDF</a>		115 VAC	max. 20 mA	-	-20 to +50 °C [-4 to +122 °F]  IP65	up to 100,000h	1 Hz on for 550 ms	Polycarbonate	58 [2.05]	
<a href="#">64421067</a>	Green	<a href="#">PDF</a>										
<a href="#">64431067</a>	Yellow	<a href="#">PDF</a>										
<a href="#">64441067</a>	Clear	<a href="#">PDF</a>										
<a href="#">64451067</a>	Blue	<a href="#">PDF</a>										
<a href="#">64413075</a>	Red	<a href="#">PDF</a>	LED Rotating Light Element	24 VAC/VDC	max. 40 mA	max. 500 mA	-20 to +50 °C [-4 to +122 °F]  IP65	up to 100,000h	120 rotations per minute	Polycarbonate	67 [2.36]	
<a href="#">64423075</a>	Green	<a href="#">PDF</a>										
<a href="#">64433075</a>	Yellow	<a href="#">PDF</a>										
<a href="#">64443075</a>	Clear	<a href="#">PDF</a>										
<a href="#">64453075</a>	Blue	<a href="#">PDF</a>										



### Terminal Pin Activation of Multi-Color LED Permanent Light Element

Pin 1	Pin 2	Pin 3	Function
24V	-	-	Red
-	24V	-	Green
24V	24V	-	Yellow
-	-	24V	Blue
24V	24V	24V	White
24V	-	24V	Violet
-	24V	24V	Turquoise

### Bulbs for Incandescent Permanent Optical Element

Part Number	Description	Wattage	Voltage	Life Duration
<a href="#">95584035</a>	Bulb for incandescent light	5W	24 VDC	up to 5,000h
<a href="#">95584038</a>			230 VAC	
<a href="#">95584057</a>	BA15d Bayonet Socket	115 VAC		



# Configuring Your KombiSIGN 71 Stack Light

## STEP 1

Select the required optical elements for your application



### Optical Signal Elements

- Incandescent Permanent Light
- LED Permanent Light
- LED Flashing Light
- LED Blinking Light
- LED Rotating Light
- Xenon Flashing Light

### Audible Signal Elements

- Buzzer Element
- Siren Element

## STEP 2

Select the optional audible elements for your application

### Plain Base Mount

### Tube Base Mount

## STEP 3

Select the correct terminal element for your mounting option (includes cap)



Screw terminal  
Order no. [64082000](#)



CAGE CLAMP® terminal  
Order no. [64080000](#)



Screw terminal  
Order no. [64083000](#)



CAGE CLAMP® terminal  
Order no. [64081000](#)

## STEP 4

Where appropriate, select a base and the desired tube length (only for tube mounting)



Tube with clamp  
Order no. [96000018](#)



Adapter for single hole mounting  
Order no. [96000025](#)



Base with integrated tube  
Order no. [97584010](#)

Tube Ø 25 mm, all anodized  
Order no.

- 100mm long [97584510](#)
- 250mm long [97584025](#)
- 400mm long [97584040](#)
- 600mm long [97584060](#)
- 800mm long [97584080](#)
- 1000mm long [97584003](#)

Base for Tube, plastic  
Order no. [97584090](#)

Base for Tube, metal  
Order no. [97584091](#)

Foldaway Base  
Order no. [96000030](#)

Tube Ø 25 mm, plastic, only for Foldaway Base, 45mm long  
Order no. [96000031](#)

## STEP 5

Where appropriate, select the bracket and the contact box.



Contact box with side cable exit  
Order no. [97584001](#)



Bracket for base mounting  
Order no. [96000002](#)



Contact box with side cable exit  
Order no. [97584001](#)



Contact box with magnetic base and side cable exit  
Order no. [97584004](#)



Bracket for 1-sided mounting  
Order no. [97584085](#)



Bracket for 2-sided mounting  
Order no. [97584086](#)



Bracket for base mounting with concealed cable entry  
Order no. [96000014](#)



Bracket for tube mounting  
Order no. [96000001](#)

# Werma Modular Stack Lights Overview



# WERMA

SIGNALTECHNIK

## Description

WERMA's modular stack light system offers total choice and flexibility as it allows for a completely free combination of optical and audible signal elements. The bayonet mechanism allows elements to be mechanically and electrically connected within seconds.

This means that elements can be safely and easily changed (contact-voltage proof) without the need for tools.

Typical product applications include; machine tools, packaging machines, conveyor systems, printing machines, loading docks, retail centers (check outs), queuing indicators for theme parks, and more.

## Product highlights:

- Signal elements in common voltages (24 VDC and 115 VAC)
- Modular system allows combination as required
- Two different sizes (70 and 50mm diameter)
- Five colors available
- Wide range of audible elements
- Diverse and flexible solutions

## Simple assembly with bayonet mechanism

- Simple mounting and removal of the elements
- New combinations at the twist of a hand
- Tool-free bulb change
- Position marks to guide alignment



# Werma Stack Lights Family Overview

## KombiSIGN 71

Modular IP65-rated stack light system with 70 mm diameter for use in standard applications.

KS 71 stack lights are available in 5 colors and multiple light effects (permanent, blinking, rotating, flashing). Multiple light sources (incandescent, LED, Xenon tube) and a wide variety of mountings are available. Combine up to 5 elements per terminal. Various terminal design choices are available as well as multiple voltages and audible elements up to 105 dB.

### KS 71 Terminal Elements



Screw terminals



CAGE CLAMP® terminals

## KombiSIGN 50

Modular IP54-rated stack light system with 50 mm diameter for use on smaller machines.

KS 50 stack lights are available in 5 colors with either permanent or blinking light effects in multiple voltages. A choice of incandescent or LED light sources is available as well as an 80 dB audible element. Elements can be combined in a variety of mountings, up to 4 elements per mounting for 360° of visibility.

### KS 50 Terminal Element

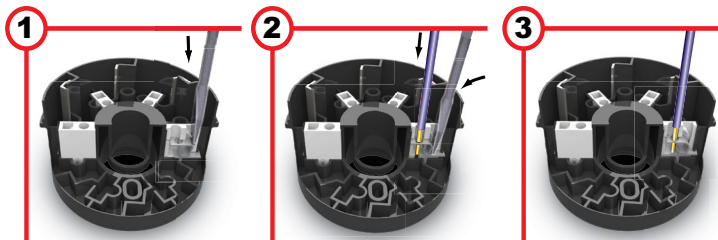


Screw terminal



## Safe and Efficient Connection Thanks to CAGE CLAMP® Technology

Terminal elements with CAGE CLAMP® technology enable leads to be quickly and easily wired, guaranteeing a secure and reliable contact.



1. Insert screwdriver at a slight angle into opening as far as possible.

2. Open spring-loaded clamp with the help of the screwdriver and insert wire as far as possible.

3. Remove screwdriver - the wire is firmly clamped.

CAGE CLAMP® is a registered trademark of WAGO Kontakttechnik GmbH.