



Signal Devices

Visual 98mm Base Mount Beacons Features

- Choose from permanent incandescent, permanent LED, flashing Xenon, EVS (Enhanced Visibility System) flashing LED, and rotating models
- Base mount installation
- 98mm diameter
- Light-intensive Xenon flash in flash models
- Bulb not included with 826 incandescent models
- 25W bulb included with 827 incandescent models
- Various mounting accessories available
- 2-year warranty



Visual 98mm Base Mount Beacons 826, 827, and 828 Series Selection Chart													
Part Number	Price	Color	Drawing link	Description	Voltage	Current	Starting Current	Operating Temp /Protection	Life Duration	Housing Material	Weight g [oz]	Connection	Agency Approvals
74mm Base Mount													
82610000		Red	PDF	Incandescent Permanent Light 98mm	12-240 V AC/DC max (depends on bulb selection; bulb sold separately)	Depends on bulb selection. (bulb sold separately)	-				180 [6.35]		
82620000		Green	PDF										
82630000		Yellow	PDF										
82640000		Clear	PDF										
82650000		Blue	PDF										
82710075		Red	PDF	Incandescent Blinking Light (1.5 Hz blinking frequency, 5Ws flash energy) 98mm	24 VAC/VDC	max. 3.0 A			Up to 5,000h	Polycarbonate cap Polycarbonate/ABS base	207 [7.30]	Terminal screws Max 2.5 mm ² AWG 16-14 Cable diameter 5-8 mm	cULus file E164155, CE, RoHS
82720075		Green	PDF										
82730075		Yellow	PDF										
82740075		Clear	PDF										
82750075		Blue	PDF										
82710077		Red	PDF		115 VAC/VDC	max. 500 mA	≤ 3.0 A	-4 to +122 °F [-20 to +50 °C]	IP65 when mounted				
82720077		Green	PDF										
82730077		Yellow	PDF										
82740077		Clear	PDF										
82750077		Blue	PDF										
82810055		Red	PDF	Xenon Flashing Light (1Hz flash frequency, 1W flash energy) 98mm	24 VDC	300 mA			4,000,000 flashes		220 [7.76]		
82820055		Green	PDF										
82830055		Yellow	PDF										
82840055		Clear	PDF										
82850055		Blue	PDF										
82810067		Red	PDF		115 VAC	65 mA 50-60 Hz							
82820067		Green	PDF										
82830067		Yellow	PDF										
82840067		Clear	PDF										
82850067		Blue	PDF										

To obtain the most current agency approval information, see the Agency Approval Checklist section on the specific part number's web page.

Bulbs



[95582635](#)

Bulbs						
Part Number	Price	Description	Wattage	Voltage	For Use With	Life Duration
95582635		Bulb for incandescent light BA15d bayonet socket	15W	24 VAC/DC	826xxxxx	up to 5,000h
95582637				115 VAC		
95582638				230 VAC		
95582735		Bulb for blinking incandescent light B15d bayonet socket	25W	24 VAC/DC	827xxxxx	up to 2,000h
95582737				115 VAC		
95588524		Halogen bulb G6.35	20W	12V	885xxx78	
95588525				24V	885xxx75	



[95582735](#)



[95588524](#)



Signal Devices

Visual 98mm Base Mount Beacons

Visual 98mm Base Mount Beacons 829 Series Selection Chart														
Part Number	Price	Color	Drawing Link	Description	Voltage	Current	Starting Current	Operating Temp /Protection	Life Duration	Housing Material	Weight g [oz]	Connection	Agency Approvals	
74mm (Base Mount)														
82910055		Red	PDF	Permanent/ Blinking LED (blinking frequency 1.5 Hz) 98mm	24 VDC	≤ 150 mA					200 [7.05]			
82920055		Green	PDF											
82930055		Yellow	PDF											
82950055		Blue	PDF	Rotating LED 98mm	24 VDC	≤ 170 mA					215 [7.58]	Terminal screw ≤ 2.5 mm ² AWG 16-14 Cable diameter 5-7mm		
82911055		Red	PDF											
82921055		Green	PDF											
82931055		Yellow	PDF											
82941055		Clear	PDF											
82951055		Blue	PDF											
82911068		Red	PDF		115-230 VAC	≤ 200 mA								
82921068		Green	PDF											
82931068		Yellow	PDF											
82941068		Clear	PDF											
82951068		Blue	PDF		Double Flash LED 98mm	24 VDC	≤ 100 mA					205 [7.23]		cULus file E164155, CE, RoHS
82912055		Red	PDF											
82932055		Yellow	PDF											
82942055		Clear	PDF	115-230 VAC		≤ 100 mA								
82912068		Red	PDF											
82932068		Yellow	PDF											
82942068		Clear	PDF	Permanent LED 98mm	115 VAC	≤ 30 mA	≤ 500 mA				200 [7.05]			
82913067		Red	PDF											
82923067		Green	PDF											
82933067		Yellow	PDF											
82953067		Blue	PDF	Permanent/ blinking / rotating LED 98mm	24 VDC	≤ 300 mA					205 [7.23]	Terminal screws ≤ 2.5 mm ² AWG 24-11 Cable diameter 5-7mm		
82915055		Red	PDF											
82925055		Green	PDF											
82935055		Yellow	PDF											
82955055		Blue	PDF											
82919055		Red	PDF	*Enhanced Visibility System (EVS) flashing LED 98mm	24 VDC						215 [7.58]	Terminal screws ≤ 2.5 mm ² AWG 16-14 Cable diameter 5- mm		
82939055		Yellow	PDF											
82949055		Clear	PDF											
82919068		Red	PDF		115-230 VAC									≤ 150 mA
82939068		Yellow	PDF											
82949068		Clear	PDF											

*EVS models provide a random flash pattern for increased visibility.

To obtain the most current agency approval information, see the Agency Approval Checklist section on the specific part number's web page.

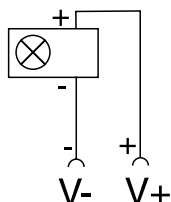


Signal Devices

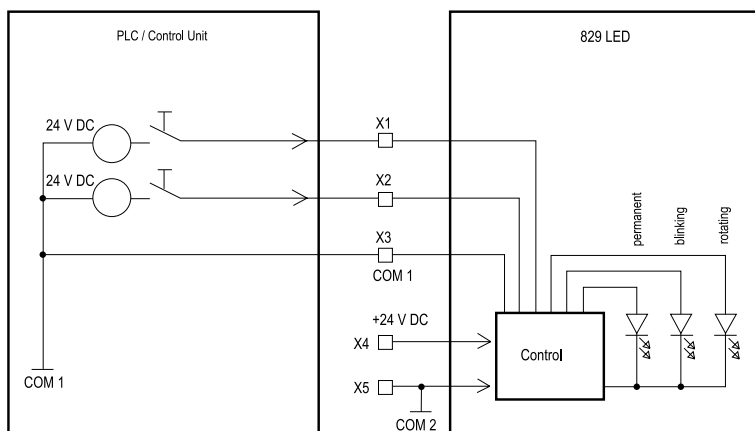
Visual 98mm Base Mount Beacons

Schematics

**826, 827, 828, Series and All 829s except:
82915055, 82925055, 82935055, 82955055**



**Permanent/Blinking/Rotating LED:
82915055, 82925055, 82935055, 82955055**



With positive logic	
X1	1 = +24 V, 0 = COM 1
X2	1 = +24 V, 0 = COM 1
X3	COM 1
X4	+24 V
X5	COM 2
With negative logic	
X1	1 = -24 V, 0 = COM 1
X2	1 = -24 V, 0 = COM 1
X3	COM 1
X4	+24 V
X5	COM 2

Binary Code (for external triggering)

X1	X2	mode	
0	0	Permanent	ON/Solid
0	1	Rotating	
1	0	Blinking	
1	1	Permanent	ON/Solid



Signal Devices

Beacon Accessories

WERMA Beacons Accessories						
Part Number	Price	Drawing Link	Description	Operating Temp.	Material	Weight
Installation Beacon Accessories						
97581201		PDF	WERMA tube adapter, tube mount, 57mm diameter, black, polyamide. For use with beacons with 37mm (PG 29) mounting installation.	-4 to 122°F [-20 to 50°C]	Polyamide / Fiberglass	1.13 g [0.04 oz]
97581202		PDF	WERMA surface mounting base, base mount, black, polyamide. For use with beacons with 37mm (PG 29) mounting installation.		Polyamide / Fiberglass with rubber seal	2.83 g [0.1 oz]
97581503		PDF	WERMA beacon enclosure, surface mount, 1 hole. For use with beacons with 37mm (PG 29) mounting installation.		Polycarbonate/ABS blend	8.5 g [0.3 oz]
97581507		PDF	WERMA beacon enclosure, surface mount, 2 holes. For use with beacons with 37mm (PG 29) mounting installation.			14.17 g [0.5 oz]
97581508		PDF	WERMA beacon enclosure, surface mount, 3 holes. For use with beacons with 37mm (PG 29) mounting installation.			17g [0.6 oz]
97581522		PDF	WERMA anti-twist washer, stainless steel. For use with Werma beacons with 37mm (PG 29) mounting installation.		304 Stainless steel	0.57 g [0.02 oz]
Freestanding Beacon Accessories						
96000001		PDF	WERMA mounting bracket, tube mount, black, polyamide. For use with 50mm or 70mm terminal elements. M16 x 1.5mm cable gland included.	-4 to 122°F [-20 to 50°C]	Polyamide	57g [2.01 oz]
97520901		PDF	WERMA plastic base with integrated tube, base mount, 70mm diameter, 110mm length, black, polyamide. For use with 209 or 219 series beacons.		Polyamide	0.1 lbs [1.6 oz]
97520902		PDF	WERMA cable gland, M25 x 1.5mm thread type, polyamide, black, accepts 8–17mm diameter cable, IP68.		Nylon	0.1 lbs [1.6 oz]
97582603		PDF	WERMA galvanized wire guard, steel. For use with 826, 827, 828 or 829 series industrial signal beacons.		Wire D 3mm, chromed	140g [4.93 oz]
97582605		PDF	WERMA mounting bracket, wall mount, black, ABS/ polycarbonate. For use with 826, 827, 828 and 829 series industrial signal beacons.		Polycarbonate/ABS blend	62g [2.19 oz]

