

# WERMA SIGNALTECHNIK Optical Signal Devices

## 98mm Base Mount Beacons

### Features

- Choose from permanent incandescent, permanent LED, flashing Xenon, EVS (Enhanced Visibility System) flashing LED, and rotating models
- Base mount installation
- 98mm diameter
- Light-intensive Xenon flash in flash models
- Bulb not included with 826 incandescent models
- 25W bulb included with 827 incandescent models
- Various mounting accessories available
- 2 year warranty



| 826, 827, and 828 Series Beacons Technical Specifications |       |        |                     |  |   |   |                  |                            |                   |   |               |  |                              |
|---|-------|--------|---------------------|--|---|---|------------------|----------------------------|-------------------|---|---------------|--|------------------------------|
| Part Number   | Price | Color  | Drawing link        | Description  | Voltage   | Current   | Starting Current | Operating Temp /Protection | Life Duration     | Housing Material                            | Weight g [oz] | Connection   | Agency Approvals             |
| <b>74mm Base Mount</b>                                    |       |        |                     |  |   |   |                  |                            |                   |   |               |  |                              |
| <a href="#">82610000</a>                                  |       | Red    | <a href="#">PDF</a> | Incandescent Permanent Light 98mm  | 12-240V AC/DC max (depends on bulb selection; bulb sold separately) | Depends on bulb selection. (bulb sold separately) | -                |                            |                   |   | 180 [6.35]    |  |                              |
| <a href="#">82620000</a>                                  |       | Green  | <a href="#">PDF</a> |  |   |   |                  |                            |                   |   |               |  |                              |
| <a href="#">82630000</a>                                  |       | Yellow | <a href="#">PDF</a> |  |   |   |                  |                            |                   |   |               |  |                              |
| <a href="#">82640000</a>                                  |       | Clear  | <a href="#">PDF</a> |  |   |   |                  |                            |                   |   |               |  |                              |
| <a href="#">82650000</a>                                  |       | Blue   | <a href="#">PDF</a> |  |   |   |                  |                            |                   |   |               |  |                              |
| <a href="#">82710075</a>                                  |       | Red    | <a href="#">PDF</a> | Incandescent Blinking Light (1.5 Hz blinking frequency, 5Ws flash energy) 98mm | 24V AC/DC   | max. 3.0 A  |                  | -4 to 122°F [-20 to 50°C]  | Up to 5,000h      | Polycarbonate cap<br>Polycarbonate/ABS base | 207 [7.30]    | Terminal screws<br>Max 2.5 mm <sup>2</sup><br>AWG 16-14<br>Cable diameter 5-8 mm | cULus file E164155, CE, RoHS |
| <a href="#">82720075</a>                                  |       | Green  | <a href="#">PDF</a> |  |   |   |                  |                            |                   |   |               |  |                              |
| <a href="#">82730075</a>                                  |       | Yellow | <a href="#">PDF</a> |  |   |   |                  |                            |                   |   |               |  |                              |
| <a href="#">82740075</a>                                  |       | Clear  | <a href="#">PDF</a> |  |   |   |                  |                            |                   |   |               |  |                              |
| <a href="#">82750075</a>                                  |       | Blue   | <a href="#">PDF</a> |  |   |   |                  |                            |                   |   |               |  |                              |
| <a href="#">82710077</a>                                  |       | Red    | <a href="#">PDF</a> |  |   |   |                  |                            |                   |   |               |  |                              |
| <a href="#">82720077</a>                                  |       | Green  | <a href="#">PDF</a> |  |   |   |                  |                            |                   |   |               |  |                              |
| <a href="#">82730077</a>                                  |       | Yellow | <a href="#">PDF</a> |  |   |   |                  |                            |                   |   |               |  |                              |
| <a href="#">82740077</a>                                  |       | Clear  | <a href="#">PDF</a> |  |   |   |                  |                            |                   |   |               |  |                              |
| <a href="#">82750077</a>                                  |       | Blue   | <a href="#">PDF</a> |  |   |   |                  |                            |                   |   |               |  |                              |
| <a href="#">82810055</a>                                  |       | Red    | <a href="#">PDF</a> | Xenon Flashing Light (1Hz flash frequency, 1W flash energy) 98mm               | 24VDC   | 300mA   | ≤ 3.0 A          | IP65 when mounted          | 4,000,000 flashes |   | 220 [7.76]    |  |                              |
| <a href="#">82820055</a>                                  |       | Green  | <a href="#">PDF</a> |  |   |   |                  |                            |                   |   |               |  |                              |
| <a href="#">82830055</a>                                  |       | Yellow | <a href="#">PDF</a> |  |   |   |                  |                            |                   |   |               |  |                              |
| <a href="#">82840055</a>                                  |       | Clear  | <a href="#">PDF</a> |  |   |   |                  |                            |                   |   |               |  |                              |
| <a href="#">82850055</a>                                  |       | Blue   | <a href="#">PDF</a> |  |   |   |                  |                            |                   |   |               |  |                              |
| <a href="#">82810067</a>                                  |       | Red    | <a href="#">PDF</a> |  |   |   |                  |                            |                   |   |               |  |                              |
| <a href="#">82820067</a>                                  |       | Green  | <a href="#">PDF</a> |  |   |   |                  |                            |                   |   |               |  |                              |
| <a href="#">82830067</a>                                  |       | Yellow | <a href="#">PDF</a> |  |   |   |                  |                            |                   |   |               |  |                              |
| <a href="#">82840067</a>                                  |       | Clear  | <a href="#">PDF</a> |  |   |   |                  |                            |                   |   |               |  |                              |
| <a href="#">82850067</a>                                  |       | Blue   | <a href="#">PDF</a> |  |   |   |                  |                            |                   |   |               |  |                              |
|   |       |        |                     |  | 115V AC/DC  | max. 500mA  |                  |                            |                   |   |               |  |                              |
|   |       |        |                     |  | 115VAC  | 65mA<br>50-60 Hz                                  |                  |                            |                   |   |               |  |                              |

To obtain the most current agency approval information, see the Agency Approval Checklist section on the specific part number's web page at [www.AutomationDirect.com](http://www.AutomationDirect.com)

## Bulbs

| Bulbs                    |       |  |         |           |              |               |
|--------------------------|-------|--|---------|-----------|--------------|---------------|
| Part Number              | Price | Description  | Wattage | Voltage   | For Use With | Life Duration |
| <a href="#">95582635</a> |       | Bulb for incandescent light BA15d bayonet socket         | 15W     | 24V AC/DC | 826xxxxx     | up to 5,000h  |
| <a href="#">95582637</a> |       |  |         | 115VAC    |              |               |
| <a href="#">95582638</a> |       |  |         | 230VAC    |              |               |
| <a href="#">95582735</a> |       | Bulb for blinking incandescent light B15d bayonet socket | 25W     | 24V AC/DC | 827xxxxx     | up to 2,000h  |
| <a href="#">95582737</a> |       |  |         | 115VAC    |              |               |
| <a href="#">95588524</a> |       | Halogen bulb G6.35                                       | 20W     | 12V       | 885xxx78     |               |
| <a href="#">95588525</a> |       |  |         | 24V       | 885xxx75     |               |



95582635



95582735



95588524



**WERMA**  
SIGNALTECHNIK

# Optical Signal Devices

## 98mm Base Mount Beacons

| 829 and 885 Series 98mm Beacons Technical Specifications |         |        |                     |   |                       |         |                  |                               |                  |  |                |   |                                    |
|--|---------|--------|---------------------|---|-----------------------|---------|------------------|-------------------------------|------------------|--|----------------|---|------------------------------------|
| Part Number  | Price   | Color  | Drawing Link        | Description   | Voltage               | Current | Starting Current | Operating Temp /Protection    | Life Duration    | Housing Material                                   | Weight g [oz]  | Connection  | Agency Approvals                   |
| <b>74mm (Base Mount)</b>                                 |         |        |                     |   |                       |         |                  |                               |                  |  |                |   |                                    |
| <a href="#">82910055</a>                                 |         | Red    | <a href="#">PDF</a> | Permanent/<br>Blinking LED<br>(blinking<br>frequency<br>1.5 Hz)<br>98mm | 24VDC                 | ≤ 150mA |                  |                               |                  |  | 200<br>[7.05]  |   |                                    |
| <a href="#">82920055</a>                                 |         | Green  | <a href="#">PDF</a> |   |                       |         |                  |                               |                  |  |                |   |                                    |
| <a href="#">82930055</a>                                 |         | Yellow | <a href="#">PDF</a> |   |                       |         |                  |                               |                  |  |                |   |                                    |
| <a href="#">82950055</a>                                 |         | Blue   | <a href="#">PDF</a> | Rotating LED<br>98mm  | 24VDC                 | ≤ 170mA |                  |                               |                  | Polycarbonate<br>cap<br>Polycarbonate/<br>ABS base | 215<br>[7.58]  | Terminal<br>screw<br>≤ 2.5 mm <sup>2</sup><br>AWG 16-14<br>Cable<br>diameter<br>5-7 mm  | cULus file<br>E164155,<br>CE, RoHS |
| <a href="#">82911055</a>                                 |         | Red    | <a href="#">PDF</a> |   |                       |         |                  |                               |                  |  |                |   |                                    |
| <a href="#">82921055</a>                                 |         | Green  | <a href="#">PDF</a> |   |                       |         |                  |                               |                  |  |                |   |                                    |
| <a href="#">82931055</a>                                 |         | Yellow | <a href="#">PDF</a> |   |                       |         |                  |                               |                  |  |                |   |                                    |
| <a href="#">82941055</a>                                 |         | Clear  | <a href="#">PDF</a> |   |                       |         |                  |                               |                  |  |                |   |                                    |
| <a href="#">82951055</a>                                 |         | Blue   | <a href="#">PDF</a> |   |                       |         |                  |                               |                  |  |                |   |                                    |
| <a href="#">82911068</a>                                 |         | Red    | <a href="#">PDF</a> |   |                       |         |                  |                               |                  |  |                |   |                                    |
| <a href="#">82921068</a>                                 |         | Green  | <a href="#">PDF</a> |   |                       |         |                  |                               |                  |  |                |   |                                    |
| <a href="#">82931068</a>                                 |         | Yellow | <a href="#">PDF</a> |   |                       |         |                  |                               |                  |  |                |   |                                    |
| <a href="#">82941068</a>                                 |         | Clear  | <a href="#">PDF</a> |   |                       |         |                  |                               |                  |  |                |   |                                    |
| <a href="#">82951068</a>                                 |         | Blue   | <a href="#">PDF</a> |   |                       |         |                  |                               |                  |  |                |   |                                    |
| <a href="#">82912055</a>                                 |         | Red    | <a href="#">PDF</a> | Double Flash<br>LED<br>98mm   | 24VDC                 | ≤ 100mA |                  | -4 to 122°F<br>[-20 to 50°C]  | up to<br>50,000h |  | 205<br>[7.23]  |   |                                    |
| <a href="#">82932055</a>                                 |         | Yellow | <a href="#">PDF</a> |   |                       |         |                  |                               |                  |  |                |   |                                    |
| <a href="#">82942055</a>                                 |         | Clear  | <a href="#">PDF</a> |   |                       |         |                  |                               |                  |  |                |   |                                    |
| <a href="#">82912068</a>                                 |         | Red    | <a href="#">PDF</a> |   |                       |         |                  |                               |                  |  |                |   |                                    |
| <a href="#">82932068</a>                                 |         | Yellow | <a href="#">PDF</a> | 115-230<br>VAC  | ≤ 100mA               |         |                  |                               |                  |  |                |   |                                    |
| <a href="#">82942068</a>                                 |         | Clear  | <a href="#">PDF</a> |   |                       |         |                  |                               |                  |  |                |   |                                    |
| <a href="#">82913067</a>                                 |         | Red    | <a href="#">PDF</a> | Permanent<br>LED<br>98mm  | 115VAC                | ≤ 30mA  | ≤ 500mA          |                               |                  |  | 200<br>[7.05]  |   |                                    |
| <a href="#">82923067</a>                                 |         | Green  | <a href="#">PDF</a> |   |                       |         |                  |                               |                  |  |                |   |                                    |
| <a href="#">82933067</a>                                 |         | Yellow | <a href="#">PDF</a> |   |                       |         |                  |                               |                  |  |                |   |                                    |
| <a href="#">82953067</a>                                 |         | Blue   | <a href="#">PDF</a> |   |                       |         |                  |                               |                  |  |                |   |                                    |
| <a href="#">82915055</a>                                 |         | Red    | <a href="#">PDF</a> | Permanent/<br>blinking /<br>rotating LED<br>98mm                        | 24VDC                 | ≤ 300mA |                  |                               |                  |  | 205<br>[7.23]  | Terminal<br>screws<br>≤ 2.5 mm <sup>2</sup><br>AWG 24-11<br>Cable<br>diameter<br>5-7 mm |                                    |
| <a href="#">82925055</a>                                 |         | Green  | <a href="#">PDF</a> |   |                       |         |                  |                               |                  |  |                |   |                                    |
| <a href="#">82935055</a>                                 |         | Yellow | <a href="#">PDF</a> |   |                       |         |                  |                               |                  |  |                |   |                                    |
| <a href="#">82955055</a>                                 |         | Blue   | <a href="#">PDF</a> | *Enhanced<br>Visibility<br>System<br>(EVS)<br>flashing<br>LED<br>98mm   | 24VDC                 | ≤ 150mA |                  |                               |                  |  | 215<br>[7.58]  | Terminal<br>screws<br>≤ 2.5 mm <sup>2</sup><br>AWG 16-14<br>Cable<br>diameter<br>5-7 mm |                                    |
| <a href="#">82919055</a>                                 |         | Red    | <a href="#">PDF</a> |   |                       |         |                  |                               |                  |  |                |   |                                    |
| <a href="#">82939055</a>                                 |         | Yellow | <a href="#">PDF</a> |   |                       |         |                  |                               |                  |  |                |   |                                    |
| <a href="#">82949055</a>                                 |         | Clear  | <a href="#">PDF</a> |   |                       |         |                  |                               |                  |  |                |   |                                    |
| <a href="#">82919068</a>                                 |         | Red    | <a href="#">PDF</a> |   |                       |         |                  |                               |                  |  |                |   |                                    |
| <a href="#">82939068</a>                                 |         | Yellow | <a href="#">PDF</a> |   |                       |         |                  |                               |                  |  |                |   |                                    |
| <a href="#">82949068</a>                                 |         | Clear  | <a href="#">PDF</a> |   |                       |         |                  |                               |                  |  |                |   |                                    |
| <a href="#">88510075</a>                                 | Retired | Red    | <a href="#">PDF</a> | Halogen   | 24V<br>AC/DC          | ≤ 1A    | -                | -22 to 122°F<br>[-30 to 50°C] | up to<br>5,000h  | Polycarbonate<br>cap<br>Polycarbonate/<br>ABS base | 321<br>[11.32] | Terminal<br>screws<br>≤ 2.5 mm <sup>2</sup><br>AWG 22-14<br>Cable<br>diameter<br>5-7 mm | cULus file<br>E354322,<br>CE, RoHS |
| <a href="#">88520075</a>                                 | Retired | Green  | <a href="#">PDF</a> |   |                       |         |                  |                               |                  |  |                |   |                                    |
| <a href="#">88530075</a>                                 | Retired | Yellow | <a href="#">PDF</a> |   |                       |         |                  |                               |                  |  |                |   |                                    |
| <a href="#">88550075</a>                                 | Retired | Blue   | <a href="#">PDF</a> |   | 115-<br>230V<br>AC/DC | ≤ 400mA | -                |                               |                  |  |                | 361<br>[12.73]  |                                    |
| <a href="#">88510078</a>                                 | Retired | Red    | <a href="#">PDF</a> |   |                       |         |                  |                               |                  |  |                |   |                                    |
| <a href="#">88520078</a>                                 | Retired | Green  | <a href="#">PDF</a> |   |                       |         |                  |                               |                  |  |                |   |                                    |
| <a href="#">88530078</a>                                 | Retired | Yellow | <a href="#">PDF</a> |   |                       |         |                  |                               |                  |  |                |   |                                    |
| <a href="#">88550078</a>                                 | Retired | Blue   | <a href="#">PDF</a> |   |                       |         |                  |                               |                  |  |                |   |                                    |

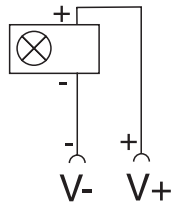
\*EVS models provide a random flash pattern for increased visibility.

# WERMA SIGNALTECHNIK Optical Signal Devices

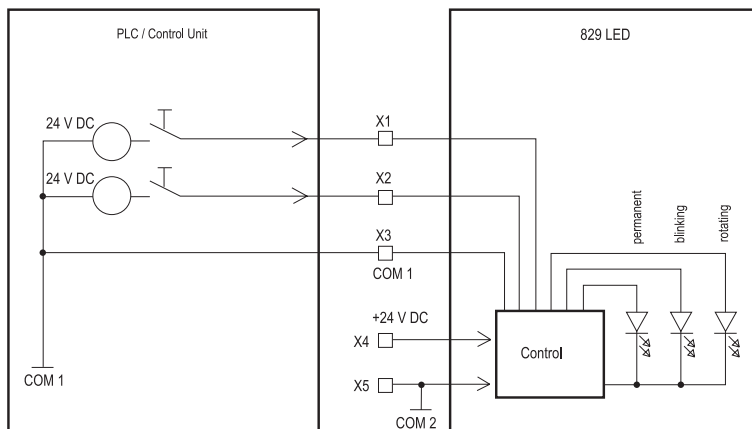
## 98mm Base Mount Beacons

### Schematics

**826, 827, 828, 885 Series and All 829s except:  
82915055, 82925055, 82935055, 82955055**



**Permanent/Blinking/Rotating LED:  
82915055, 82925055, 82935055, 82955055**



| With positive logic |                      |
|---------------------|----------------------|
| X1                  | 1 = +24 V, 0 = COM 1 |
| X2                  | 1 = +24 V, 0 = COM 1 |
| X3                  | COM 1                |
| X4                  | +24 V                |
| X5                  | COM 2                |
| With negative logic |                      |
| X1                  | 1 = -24 V, 0 = COM 1 |
| X2                  | 1 = -24 V, 0 = COM 1 |
| X3                  | COM 1                |
| X4                  | +24 V                |
| X5                  | COM 2                |

Binary Code (for external triggering)

| X1 | X2 | mode      |          |
|----|----|-----------|----------|
| 0  | 0  | Permanent | ON/Solid |
| 0  | 1  | Rotating  |          |
| 1  | 0  | Blinking  |          |
| 1  | 1  | Permanent | ON/Solid |



# Optical Signal Devices

## Beacon Accessories

| WERMA Beacons Accessories              |       |                     |   |                              |   |                     |
|--|-------|---------------------|---|------------------------------|---|---------------------|
| Part Number                            | Price | Drawing Link        | Description   | Operating Temp.              | Material                                | Weight              |
| <b>Installation Beacon Accessories</b> |       |                     |   |                              |   |                     |
| <a href="#">97581201</a>               |       | <a href="#">PDF</a> | Tube adapter for beacons with 37mm (PG29) mounting installation. Find tube adapter accessories in WERMA Stack light catalog section.      | -4 to 122°F<br>[-20 to 50°C] | Polyamide / Fiberglass                  | 1.13 g<br>[0.04 oz] |
| <a href="#">97581202</a>               |       | <a href="#">PDF</a> | Surface mounting base for beacons with 37mm (PG29) mounting installation  |                              | Polyamide / Fiberglass with rubber seal | 2.83 g<br>[0.1 oz]  |
| <a href="#">97581503</a>               |       | <a href="#">PDF</a> | Surface mounting enclosure for 1 beacon with 37mm (PG29) mounting installation  |                              | Polycarbonate/ ABS blend                | 8.5 g<br>[0.3 oz]   |
| <a href="#">97581507</a>               |       | <a href="#">PDF</a> | Surface mounting enclosure for 2 beacons with 37mm (PG29) mounting installation   |                              |   | 14.17 g<br>[0.5 oz] |
| <a href="#">97581508</a>               |       | <a href="#">PDF</a> | Surface mounting enclosure for 3 beacons with 37mm (PG29) mounting installation   |                              |   | 17g<br>[0.6 oz]     |
| <a href="#">97581522</a>               |       | <a href="#">PDF</a> | Anti-twist washer for beacons with 37mm (PG29) mounting installation  |                              | 304 Stainless steel                     | 0.57 g<br>[0.02 oz] |
| <b>Freestanding Beacon Accessories</b> |       |                     |   |                              |   |                     |
| <a href="#">96000001</a>               |       | <a href="#">PDF</a> | Bracket for tube mounting - for use with use with 219 and 209 series industrial signal beacons.   | -4 to 122°F<br>[-20 to 50°C] | Polyamide                               | 57g<br>[2.01 oz]    |
| <a href="#">97520901</a>               |       | <a href="#">PDF</a> | Plastic Base with integrated tube for WERMA industrial signal beacons- for use with 209 and 219 series beacons                            |                              | Polyamide                               | 0.1 lbs<br>[1.6 oz] |
| <a href="#">97520902</a>               |       | <a href="#">PDF</a> | Cable gland for WERMA industrial signal beacons: M25x1.5, plastic - for use with 209 and 219 series industrial signal beacons             |                              | Nylon                                   | 0.1 lbs<br>[1.6 oz] |
| <a href="#">97582603</a>               |       | <a href="#">PDF</a> | Galvanized Wire Guard for WERMA industrial signal beacons - for use with 826, 827, 828 and 829 series industrial signal beacons           |                              | Wire D 3mm, chromed                     | 140g<br>[4.93 oz]   |
| <a href="#">97582605</a>               |       | <a href="#">PDF</a> | Plastic Bracket for wall mounting for use with WERMA signal beacons - for use with 826, 827, 828 and 829 series industrial signal beacons |                              | Polycarbonate/ ABS blend                | 62g<br>[2.19 oz]    |

