

# KS 50 Elements Quick Selection Guide

STEP 1 - Optical Elements Quick Selection Guide				
Type of Light	Part Number	Color	Operating Voltage	Price
<b>Incandescent Permanent*</b>	84610000	Red	12-240V AC/DC	<--->
	84620000	Green		<--->
	84630000	Yellow		<--->
	84640000	Clear		<--->
	84650000	Blue		<--->
<b>Bulbs</b>	95584035	Clear	24V DC	<--->
	95584057	Clear	115V AC	<--->
<b>LED Permanent</b>	84810055	Red	24V AC/DC	<--->
	84820055	Green		<--->
	84830055	Yellow		<--->
	84840055	Clear		<--->
	84850055	Blue		<--->
	84810067	Red	115V AC	<--->
	84820067	Green		<--->
	84830067	Yellow		<--->
	84840067	Clear		<--->
84850067	Blue	<--->		
<b>LED Blinking Light</b>	84811075	Red	24V AC/DC	<--->
	84821075	Green		<--->
	84831075	Yellow		<--->
	84841075	Clear		<--->
	84851075	Blue		<--->
	84811067	Red	115V AC	<--->
	84821067	Green		<--->
	84831067	Yellow		<--->
	84841067	Clear		<--->
84851067	Blue	<--->		

\* Note: Bulbs are required for permanent incandescent optical element



KS 50 LED Light Element

STEP 2 - Audible Elements Quick Selection Guide					
Part Number	Description	Voltage	Tone Frequency	Maximum Volume	Price
84900075	Buzzer element	24V AC/DC	2.1 kHz	80 dB	<--->
84900077		115V AC/DC			<--->

STEP 3 - Terminal Element Quick Selection			
Part Number	Description	Mounting	Price
84500000	Screw terminal element for KS 50	Surface, tube, single hole, and bracket mounting	<--->

STEP 4 - Mounting Options/Accessories Quick Selection		
Part Number	Description	Price
97584510	Anodized tube, 100 mm [3.94 in.] long	<--->
97584025	Anodized tube, 250 mm [9.84 in.] long	<--->
97584040	Anodized tube, 400 mm [15.75 in.] long	<--->
97584060	Anodized tube, 600 mm [23.62 in.] long	<--->
97584080	Anodized tube, 800 mm [31.49 in.] long	<--->
97584003	Anodized tube, 1000 mm [39.37 in.] long	<--->
97584090	Plastic base for 25 mm [0.98 in.] diameter tube	<--->
97584091	Metal base for 25 mm [0.98 in.] diameter tube	<--->
96000030	Foldaway base for 25 mm [0.98 in.] diameter tube	<--->
97584501	Base for surface mounting, includes rubber seal	<--->
97584502	Bracket for wall mounting	<--->
97584503	Adapter for single hole mounting	<--->

STEP 5 - Contact Boxes & Brackets Quick Selection		
Part Number	Description	Price
97584001	Contact box with side exit cable	<--->
97584004	Contact box with magnetic base and side exit cable	<--->
96000014	Bracket for base mounting with concealed cable entry	<--->
96000001	Bracket for base mounting	<--->

# KS 50 Optical Elements Specifications

Company Information

Systems Overview

Programmable Controllers

Field I/O

Software

C-more & other HMI

Drives

Soft Starters

Motors & Gearbox

Steppers/ Servos

Motor Controls

Proximity Sensors

Photo Sensors

Limit Switches

Encoders

Current Sensors

Pressure Sensors

Temperature Sensors

Pushbuttons/ Lights

Process

Relays/ Timers

Comm.

Terminal Blocks & Wiring

Power

Circuit Protection

Enclosures

Tools

Pneumatics

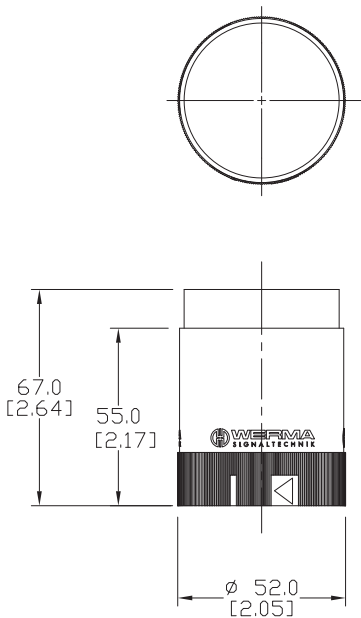
Appendix

Product Index

Part # Index

KS 50 Optical Elements Technical Specifications										
Description	Operating Voltage	Part Number	Color	Current Consumption	Starting Current	Operating Temp/ Protection	Life Duration	Flash Frequency	Housing Material	Weight
Incandescent Permanent Light (Purchase Bulb Separately)	12-240V AC/DC	84610000	Red	-	-	-4°F to 122°F [-20°C to 50°C] IP54	up to 5,000 hrs	-	Polycarbonate	40 g [1.41 oz]
		84620000	Green							
		84630000	Yellow							
		84640000	Clear							
		84650000	Blue							
LED Permanent Light Element	24V AC/DC	84810055	Red	max. 45 mA	max. 500 mA	-4°F to 122°F [-20°C to 50°C] IP54	up to 100,000 hrs	-	Polycarbonate	45 g [1.59 oz]
		84820055	Green							
		84830055	Yellow							
		84840055	Clear							
		84850055	Blue							
	115V AC	84810067	Red	max. 25 mA	-	-4°F to 122°F [-20°C to 50°C] IP54	up to 100,000 hrs	-	Polycarbonate	45 g [1.59 oz]
		84820067	Green							
		84830067	Yellow							
		84840067	Clear							
		84850067	Blue							
LED Blinking Light Element	24V AC/DC	84811075	Red	max. 25 mA	max. 500 mA	-4°F to 122°F [-20°C to 50°C] IP54	up to 100,000 hrs	1 Hz on for 550 ms	Polycarbonate	45 g [1.59 oz]
		84821067	Green							
		84831075	Yellow							
		84841075	Clear							
		84851075	Blue							
	115V AC	84811067	Red	max. 25 mA	-	-4°F to 122°F [-20°C to 50°C] IP54	up to 100,000 hrs	1 Hz on for 550 ms	Polycarbonate	45 g [1.59 oz]
		84821067	Green							
		84831067	Yellow							
		84841067	Clear							
		84851067	Blue							

Dimensions in mm [in.]



KS 50 Optical Element Dimensions



KS 50 Incandescent Permanent Light Element

Bulbs for Incandescent Permanent Optical Element			
Part Number	Description	Voltage	Life Duration
95584035	5 W Bulb for Incandescent Light B15d Bayonet Socket	24V DC	up to 5,000 hrs
95584057		115V AC	

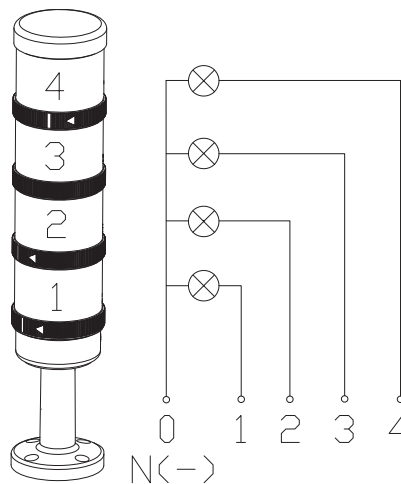
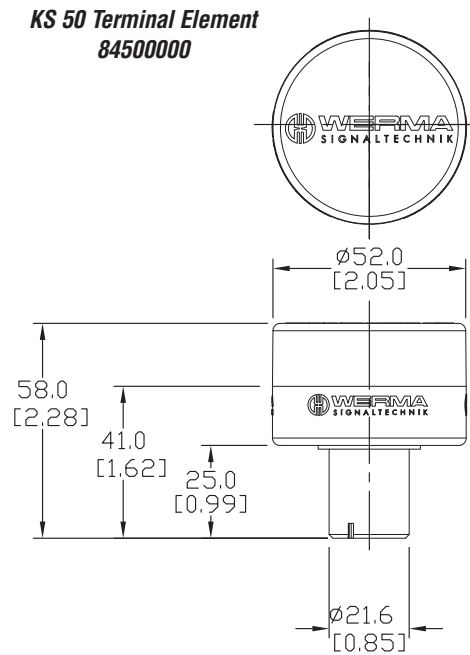
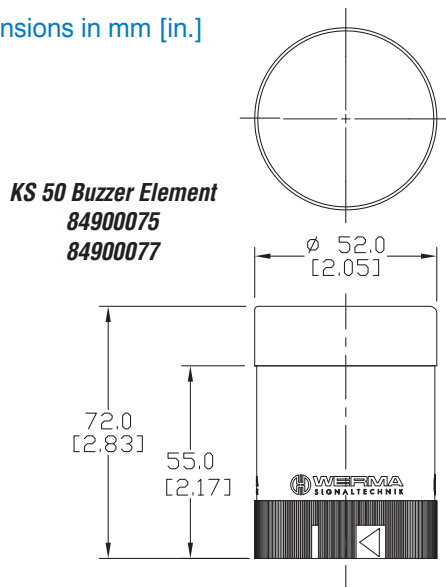


# KS 50 Audible and Terminal Elements

KS 50 Audible Elements Specifications		
<b>Part Number</b>	<b>84900075</b>	<b>84900077</b>
<b>Voltage</b>	24V AC/DC	115V AC/DC
<b>Current Consumption</b>	max. 25 mA	
<b>Tone Frequency</b>	2.1 kHz	
<b>Maximum Volume</b>	80 dB	
<b>Tone Type</b>	Continuous/Pulse Tone Selectable	
<b>Life Duration</b>	min. 5,000 h	
<b>Duty Cycle</b>	100%	
<b>Operating Temperature</b>	-4°F to 122°F [-20°C to 50°C]	
<b>Weight</b>	54 g [1.90 oz]	
<b>Housing Material</b>	PC/ABS, PC blend (cap)	
<b>Dome Material</b>	PC/ABS, PC blend	

KS 50 Terminal Element Specifications	
<b>Part Number</b>	<b>84500000</b>
<b>Description</b>	Terminal with screw connector
<b>Mounting</b>	Tube, bracket, and base mounting
<b>Connection</b>	max. 2.5 mm <sup>2</sup> - Single Wire
<b>Operating Temperature</b>	-4°F to 122°F [-20°C to 50°C]
<b>Gauge</b>	AWG 18 to AWG 14
<b>Weight</b>	70 g [2.47 oz]
<b>Cap Material</b>	Polycarbonate
<b>Base Material</b>	Polyamide glass fiber-reinforced

Dimensions in mm [in.]



# KS 50 Mounting Hardware and Accessories

Company Information

Systems Overview

Programmable Controllers

Field I/O

Software

C-more & other HMI

Drives

Soft Starters

Motors & Gearbox

Steppers/ Servos

Motor Controls

Proximity Sensors

Photo Sensors

Limit Switches

Encoders

Current Sensors

Pressure Sensors

Temperature Sensors

Pushbuttons/ Lights

Process

Relays/ Timers

Comm.

Terminal Blocks & Wiring

Power

Circuit Protection

Enclosures







Tools

Pneumatics

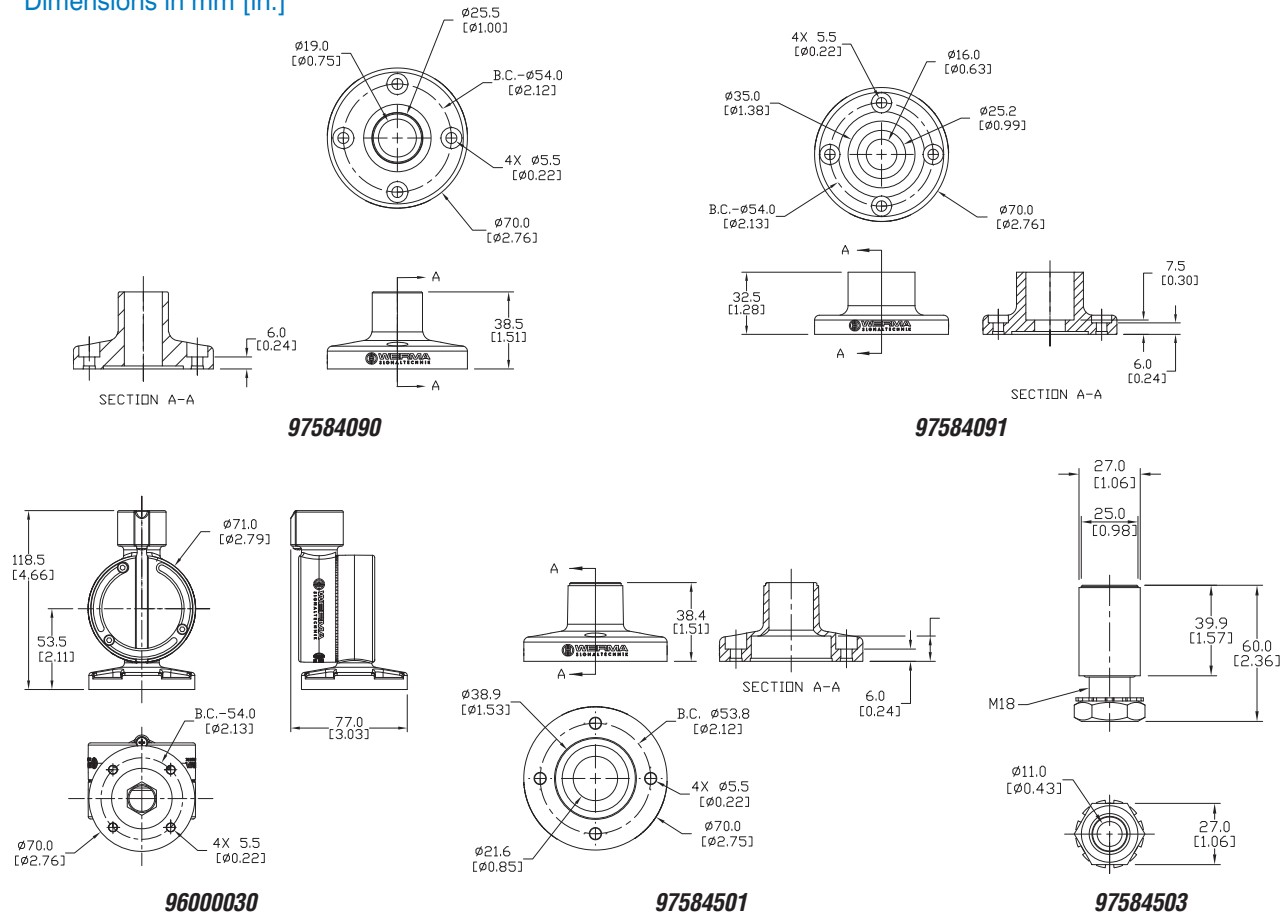
Appendix

Product Index






Part # Index

KS 50 Mounting Hardware and Accessories Specifications					
Part Number	Description	Operating Temp.	Material	Weight	
	<b>97584510</b>	Tube, 100 mm [3.94 in.]	-4°F to 122°F [-20°C to 50°C]	Anodized aluminum	30 g [1.06 oz]
	<b>97584025</b>	Tube, 250 mm [9.84 in.]			73 g [2.57 oz]
	<b>97584040</b>	Tube, 400 mm [15.75 in.]			120 g [4.23 oz]
	<b>97584060</b>	Tube, 600 mm [23.62 in.]			180 g [6.35 oz]
	<b>97584080</b>	Tube, 800 mm [31.49 in.]			236 g [8.32 oz]
	<b>97584003</b>	Tube, 1000 mm [39.37 in.]			296 g [10.44 oz]
	<b>97584090</b>	Plastic base for 25 mm [0.98 in.] diameter tube	-4°F to 122°F [-20°C to 50°C]	Polyamide Glass Reinforced	40 g [1.41 oz]
	<b>97584091</b>	Metal base for 25 mm [0.98 in.] diameter tube	-4°F to 122°F [-20°C to 50°C]	Anodized Aluminum	110 g [3.88 oz]
	<b>96000030</b>	Foldaway base for 25 mm [0.98 in.] diameter tube	-	Polyamide Glass Reinforced	165 g [5.82 oz]
	<b>97584501</b>	Base for surface mounting, includes rubber seal	-4°F to 140°F [-20°C to 60°C]	Polyamide Glass Reinforced	35 g [1.23 oz]
	<b>97584503</b>	Adapter for single hole mounting	-	Galvanized Steel	116 g [4.09 oz]

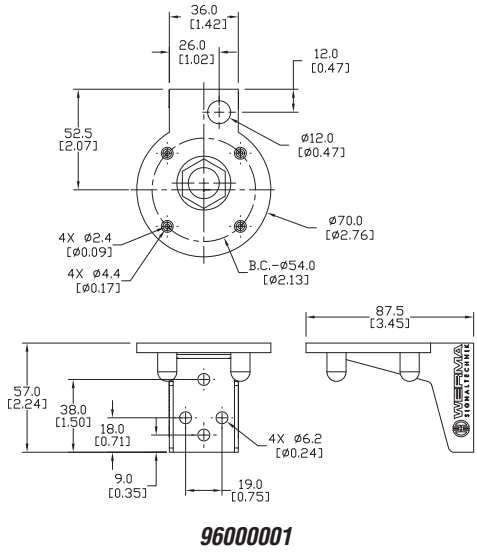
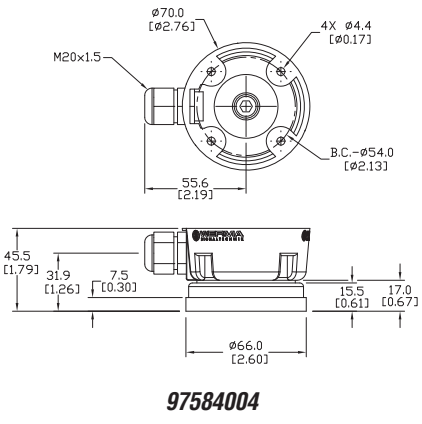
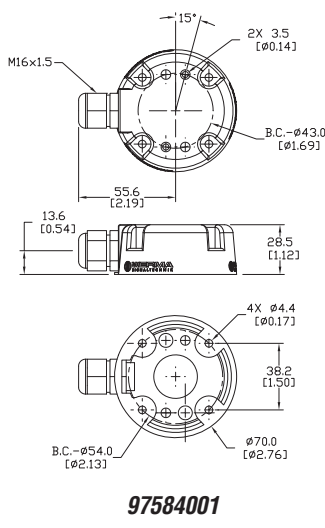
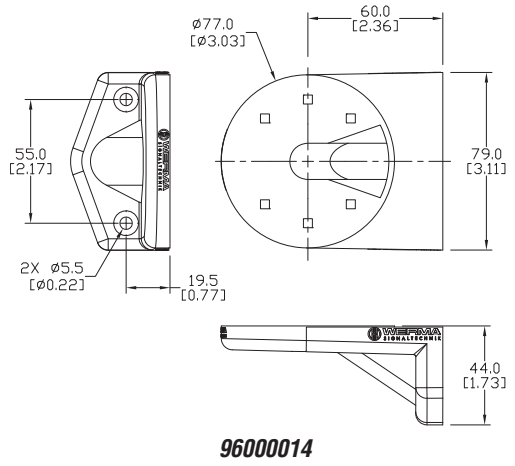
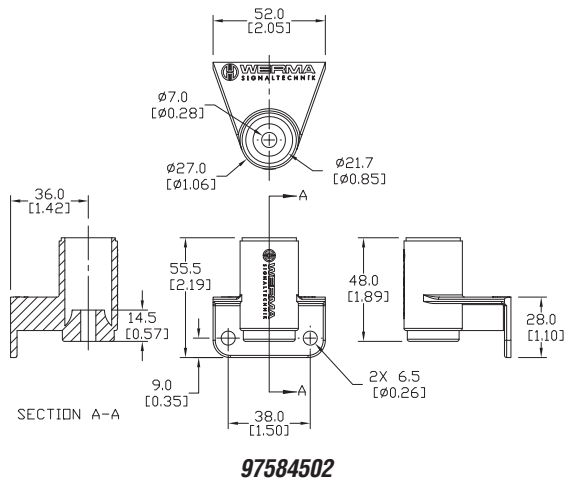
Dimensions in mm [in.]



# KS 50 Contact Boxes and Brackets

Brackets & Contact Boxes Technical Specifications				
Part Number	Description	Temp. Range	Material	Weight
 <b>97584502</b>	Bracket for wall mounting	-4°F to 140°F [-20°C to 60°C]	Polyamide	30 g [1.06 oz]
 <b>96000014</b>	Bracket for base mounting with concealed cable entry	-4°F to 140°F [-20°C to 60°C]	Polyamide	80 g [2.82 oz]
 <b>96000001</b>	Bracket for base mounting	-4°F to 122°F [-20°C to 50°C]	Polyamide	57 g [2.01 oz]
 <b>97584001</b>	Contact box with side cable exit	-22°F to 140°F [-30°C to 60°C]	Polyamide	71 g [2.50 oz]
 <b>97584004</b>	Contact box with magnetic base and side cable exit	-22°F to 140°F [-30°C to 60°C]	Polyamide	316 g [11.15 oz]

Dimensions in mm [in.]



# Foldaway Base for KS 71 and KS 50

- The signal tower can be folded away while still connected
- Minimizes packaging costs and optimizes machine transportation
- Simple mounting and cable entry – for up to 14 mm diameter cables
- Vertical alignment of signal towers even on sloping surfaces
- Positioning in 7.5° steps, markings for 30, 45, 60, or 90 degrees

Foldaway Base for KS 71 and KS 50		
Part Number	Technical Specifications	
96000030	<b>Material</b>	Polyamide Glass Fiber-Reinforced
	<b>Cable Diameter</b>	Max. 14 mm [0.55 in.]
	<b>Assembly</b>	Includes rubber seals
	<b>Fixing</b>	Vertical or horizontal positioning
	<b>Weight</b>	165 g [5.82 oz]



Dimensions in mm [in.]

