

# Vents and Louvers for Non-Metallic Enclosures



## Drain/Breather Vents



REDVK3KIT



REBV4XKIT



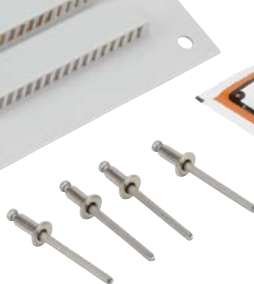
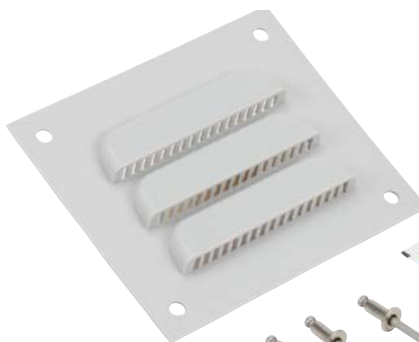
REDV4KIT

### Shipping Schedule

Same day	1 - 5 days	1 - 7 days	1 - 15 days	1 - 20 days
Color indicates shipping lead time in business days.				

Part Number	Price	Description	Wt.[oz]
<a href="#"><u>REDV1PVC</u></a>	—	AttaBox single drain vent, PVC. For use on non-metallic enclosures. Includes drain vent and silicone adhesive/sealant.	2
<a href="#"><u>REDVK3KIT</u></a>	—	AttaBox single drain vent kit, PVC. Includes drain vent and silicone adhesive/sealant.	2
<a href="#"><u>REBV4XKIT</u></a>	—	AttaBox single breather vent kit allows enclosure to "breathe" while maintaining UL Type 4X enclosure rating.	4.8
<a href="#"><u>REDV4XKIT</u></a>	—	AttaBox single drain vent kit properly drains unwanted moisture while maintaining UL Type 4X enclosure rating.	3.2

## Louver Vent



RELPK3KIT

Part Number	Price	Description	Wt.[oz]
<a href="#"><u>REL1</u></a>	—	Louver vent, for ventilation in non-metallic enclosure, polypropylene, 4.5 inch wide x 4.0 inch high. For 3 inch x 3 inch cutout.	2
<a href="#"><u>RELPK3KIT</u></a>	—	Louver vent kit, for ventilation in non-metallic enclosure. Includes 4.5 inch wide x 4.0 inch high polypropylene louver vent, rivets and silicone adhesive/sealant. For 3 inch x 3 inch cutout.	2

# Louvers and Filters for Metal Enclosures

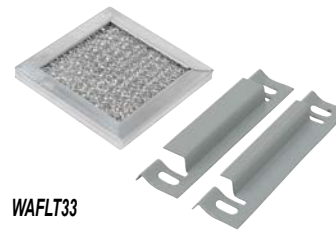


## Louver Vent Kits



Louver vents provide ventilation or cooling in metal enclosures where excessive moisture or excessive internal heat is a problem. These kits are fabricated from 14-gauge steel and include all hardware for mounting. Kits are easily field installed by making a cutout of the proper size and attaching the louver vent in place. Finish is ANSI 61 gray polyester powder finish over phosphatized surfaces or 316 stainless steel. Filter kit must be ordered separately.

## Filter Kits for Louver Vent Kits



Aluminum filters are good for stopping dust and dirt from penetrating the enclosures. These filters are designed to mount behind WAVK series louver vent kits. Mounting holes on filter brackets align with mounting holes on louver kits. Kit consists of aluminum filter, brackets and all necessary hardware for installation. Louver kit must be ordered separately.

### Shipping Schedule

Same day 1 - 5 days 1 - 7 days 1 - 15 days 1 - 20 days

Color indicates shipping lead time in business days.

### Louver Vent and Filter Kits

Louver Kit 14-gauge Steel	Price	Louver Kit 316 SS	Price	Filter Kit	Price	No. of Louvers	No. of Louvers Rows	Louver Length in [mm]	A in [mm]	B in [mm]	C in [mm]	D in [mm]
<a href="#">WAVK0808</a>	Retired	<a href="#">WAVK0203SSA</a>	Retired	—	—	3	1	2.00 [51]	3.25 [83]	3.25 [83]	2.00 [51]	2.00 [51]
<a href="#">WAVK0303</a>	—	<a href="#">WAVK0303SSA</a>	—	<a href="#">WAFLT33</a>	—	3	1	3.00 [76]	3.87 [98]	4.50 [114]	2.62 [67]	3.25 [83]
<a href="#">WAVK0304</a>	—	<a href="#">WAVK0304SSA</a>	—	<a href="#">WAFLT34</a>	—	4	1	3.00 [76]	4.75 [121]	4.50 [114]	3.50 [89]	3.25 [83]
<a href="#">WAVK0404</a>	—	<a href="#">WAVK0404SSA</a>	—	<a href="#">WAFLT44</a>	—	4	1	4.00 [102]	5.62 [143]	5.50 [140]	4.37 [111]	4.25 [108]
<a href="#">WAVK0604</a>	Retired	<a href="#">WAVK0604SSA</a>	Retired	<a href="#">WAFLT64</a>	Retired	8	1	3.00 [76]	5.62 [143]	7.50 [191]	4.37 [111]	6.25 [159]
<a href="#">WAVK0606</a>	—	<a href="#">WAVK0606SSA</a>	—	<a href="#">WAFLT66</a>	—	12	1	3.00 [76]	7.87 [200]	7.50 [191]	6.62 [168]	6.25 [159]
<a href="#">WAVK0806</a>	Retired	<a href="#">WAVK0806SSA</a>	Retired	<a href="#">WAFLT86</a>	Retired	12	2	4.00 [102]	8.18 [208]	9.50 [241]	6.93 [176]	8.25 [210]
<a href="#">WAVK0808</a>	Retired	<a href="#">WAVK0808SSA</a>	Retired	<a href="#">WAFLT88</a>	Retired	16	2	4.00 [102]	10.56 [268]	9.50 [241]	9.31 [236]	8.25 [210]
<a href="#">WAVK0812</a>	Retired	<a href="#">WAVK0812SSA</a>	Retired	<a href="#">WAFLT812</a>	Retired	24	2	4.00 [102]	15.31 [389]	9.50 [241]	14.06 [357]	8.25 [210]

Note: Dimensions in inches [millimeters].

## Dimensions

