



# Industrial LED Lighting



**CA0121S0602**

## Compact Alpha Series

Designed for use in different work environments. A compact construction combining state-of-the-art LED technology with a sturdy, anodized aluminum casing highly resistant to liquids and machine tool debris. Suitable in any workplace where the space is very limited, but at the same time requires high performance and intense lighting



**TA0221S0403**

## TRACKALPHA Series

Designed for universal use. Lighting system for industrial automation, medium and large CNC applications. Lamp with sturdy anodized aluminum structure resistant to shavings, vibrations, front diffusing tempered glass 0.20in [5mm] thick. Suitable in any workplace where there are liquids and oils.



**TA0524S0203**

## TRACKALPHA-PRO Series

Lighting system suitable for industrial automation, medium and large CNC applications. Lamp with sturdy anodized aluminum structure resistant to shavings, vibrations, clear tempered frosted glass 0.20in [5mm] thick. Suitable in any workplace where there are liquids and oils.

## Accessories



**CAF02**



**TAF03**



**HNF07**



**HNF02**



**TACLIP**



# Industrial LED Lighting

## VEGA Series



**VE0221S01**

The VEGA Series recessed LED light bar is an ideal solution for use in small spaces inside medium and large CNC machines, and allows mounting outside the machine's work area. The aluminum body with 0.16in [4mm] thick printed glass comes with an IP67/IP69 protection rating and offers a high level of resistance to dust and liquids.

## Herionova Recessed Series



**HN0221S0303**

Used in large CNC machines or when brighter illumination in wet industrial environments is required. Also suitable for industrial applications such as automation processes and medium CNC machines. State-of-the art Light Emitting Diode (LED) technology inside a robust, anodized aluminum casing, resistant to vibrations and machining debris, front tempered frosted glass 0.16in [4mm] thick. Particularly suitable in workplaces where oils and other liquids are in use.

## Herionova Cable Series



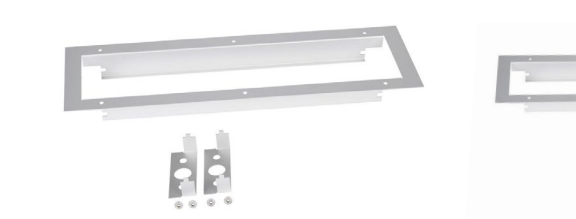
**HN0221S0307**

Used for application in diverse working environments. Suitable for industrial applications, automation processes, medium and large CNC machines. State-of-the art Light Emitting Diode (LED) technology inside a robust, anodized aluminum casing, resistant to vibrations and machining debris, front tempered frosted glass 0.16in [4mm] thick. Particularly suitable in workplaces where oils and other liquids are in use.

## Accessories



**HNFx03**



**HNFx04**



**HNFx05**



**HNFx06**



# LED Light Bars - TRACKALPHA Series

## Features

- Structure made entirely of anodized aluminum
- Outer diameter 2.76in [70mm] to be integrated into most workspaces
- 5 lengths from 12.6in [321mm] to 50.43in [1281mm]
- Protection rating IP67
- Operating temperature -20 to 45 °C [-4 to 113 °F]
- Diffused light beam 120°
- LED lifespan: (L 70) > 60,000 hours
- Light color 5,000K - CRI 80
- Power supply 24 VDC
- 9.8ft (3m) power cord
- Attach with included TAFX03 side-mounting brackets
- 4-year warranty



**TA0221S0403**



LED Light Bars - TRACKALPHA Series								
Part Number	Price	Light Color	Operating Voltage	Power Consumption (Watts)	Body Material	Light Length in [mm]	Cable Length ft [m]	Drawing Link
<a href="#">TA0221S0403</a>		Daylight white	24 VDC	13	Anodized aluminum	12.6 [321]	9.8 [3]	<a href="#">PDF</a>
<a href="#">TA0321S0403</a>				19.5		17.36 [441]		<a href="#">PDF</a>
<a href="#">TA0521S0403</a>				32.5		26.81 [681]		<a href="#">PDF</a>
<a href="#">TA0721S0403</a>				45.5		36.25 [921]		<a href="#">PDF</a>
<a href="#">TA1021S0403</a>				65		50.43 [1,281]		<a href="#">PDF</a>

Mounting brackets included with each light bar.

Accessories - TRACKALPHA Series			
Part Number	Price	Description	Drawing Link
<a href="#">TACLIP</a>		CCEA rear mounting clips, replacement, aluminum. For use with CCEA TRACKALPHA and TRACKALPHA-PRO series LED light bars.	<a href="#">PDF</a>
<a href="#">TAFX03</a>		CCEA side bracket, replacement, stainless steel. For use with CCEA TRACKALPHA series LED light bars.	<a href="#">PDF</a>



**TACLIP**



**TAFX03**



# LED Light Bars - TRACKALPHA Series Specifications

## Specifications

LED Light Bars - TRACKALPHA Series Technical Specifications					
Part Number	<u>TA0221S0403</u>	<u>TA0321S0403</u>	<u>TA0521S0403</u>	<u>TA0721S0403</u>	<u>TA1021S0403</u>
Luminous Color	Daylight white				
Color Temperature	5000K				
Luminous Flux (lm)	1,300	1,950	3,250	4,550	6,500
Rated Voltage	24 VDC				
Operating Voltage Range	22-28 VDC				
Rated Current Consumption	0.54A @ 24 VDC	0.81A @ 24 VDC	1.35A @ 24 VDC	1.90A @ 24 VDC	2.71 A @ 24 VDC
Rated Power Consumption (W)	13	19.5	32.5	45.5	65
Operating Ambient Temperature	-20 to +45 °C [-4 to +113 °F]				
Operating Ambient Humidity	Less than 90% (no condensation)				
Mounting Location	Indoors				
Mounting Direction	All directions				
Protection Rating	IP67				
Insulation Resistance	More than 5 MΩ at 500 VDC between the terminals and the chassis				
Withstanding Voltage	500 VAC applied for 1 minute between terminals and chassis without breaking insulation				
Vibration Resistance	19.6 m/s <sup>2</sup> (30 Hz, back and forth: 2h, right to left: 2h, up and down: 2h)				
Weight (lb [kg])	2.65 [1.20]	3.64 [1.65]	5.62 [2.55]	7.28 [3.30]	10.25 [4.65]
Agency Approvals *	cURus in compliance with UL2108 CE				

\* To obtain the most current agency approval information, see the Agency Approval Checklist section on the specific part number's web page.