

# Stride SE Series Unmanaged Industrial Ethernet Switches and Media Converters



## Features

- Wide temp range option
- Integrated panel mounting option
- 12, 24 VDC redundant input
- IP40 metal case models
  - IP30 plastic case models
- Haz Loc
- 5-year warranty



IECEX



RoHS Compliant

## Plastic Case Switches

Stride SE Series Unmanaged Models						
Part Number	Price	10/100	Fiber Connector	Input Power	Operating Temp	Agency Approvals
<a href="#"><u>SE-SW5U</u></a>		5	–	2.0 W	-10 to +60 °C [+14 to +140 °F]	UL/cUL 508, Haz Loc, CE
<a href="#"><u>SE-SW5U-ST</u></a>		4	1 ST	3.0 W		
<a href="#"><u>SE-SW5U-SC</u></a>			1 SC			
<a href="#"><u>SE-MC2U-ST</u></a>		1	1 ST	2.0 W		
<a href="#"><u>SE-MC2U-SC</u></a>			1 SC			

## Metal Case Switches

Stride SE Series Unmanaged Models						
Part Number	Price	10/100	Fiber Connector	Input Power	Operating Temp	Agency Approvals
<a href="#"><u>SE-SW5U-WT</u></a>		5	–	2.0 W	-40 to +85 °C [-40 to +185 °F]	UL/cUL 508, Haz Loc, CE
<a href="#"><u>SE-SW5U-ST-WT</u></a>		4	1 ST	3.0 W		
<a href="#"><u>SE-SW5U-SC-WT</u></a>		4	1 SC			
<a href="#"><u>SE-SW9U-ST-WT</u></a>		8	1 ST	5.0 W		
<a href="#"><u>SE-SW9U-SC-WT</u></a>		8	1 SC			

# Stride SE Series Unmanaged Industrial Ethernet Switches and Media Converters

General Specifications		
<b>Ethernet Switch Type</b>	Up to 9 ports	
<b>Operating Mode</b>	Store and forward wire speed switching, non-blocking	
<b>Devices Supported</b>	All IEEE 802.3 compliant devices are supported	
<b>Standards</b>	IEEE 802.3, 802.3u, 802.3x	
<b>MAC Addresses</b>	1024 addresses	
<b>Memory Bandwidth</b>	3.2 Gbps	
<b>Latency for 10 Mbps ports</b>	16 $\mu$ s + frame time (typical)	
<b>Latency for 100 Mbps ports</b>	5 $\mu$ s + frame time (typical)	
<b>Power Input</b>	Redundant Input Terminals	
<b>Input Power (typical with all ports active at 100 Mbps)</b>	SE-MC2U-ST SE-MC2U-SC SE-SW5U SE-SW5U-WT	2.0 W
	SE-SW5U-ST SE-SW5U-SC SE-SW5U-ST-WT SE-SW5U-SC-WT	3.0 W
	SE-SW9U-ST-WT SE-SW9U-SC-WT	5.0 W
<b>Input Voltage</b>	10–30 VDC (continuous) Class 2 Power Supply	
<b>Reverse Power Protection</b>	Yes	
<b>Transient Protection</b>	15,000 watts peak	
<b>Spike Protection</b>	5,000 watts (10x for 10 $\mu$ s)	
<b>Ethernet Isolation</b>	1500 VRMS 1 minute	
<b>Operating Temperature Range</b>	SE-MC2U-ST SE-MC2U-SC SE-SW5U SE-SW5U-ST SE-SW5U-SC	-10 to +60 °C [+14 to +140 °F], cold startup at -10 °C [+14 °F]
	SE-SW5U-WT SE-SW5U-ST-WT SE-SW5U-SC-WT SE-SW9U-ST-WT SE-SW9U-SC-WT	-40 to +85 °C [-40 to +185 °F], cold startup at -40 °C [-40 °F]
<b>Storage Temperature Range</b>	-40 to +85 °C [-40 to +185 °F]	
<b>Humidity (non-condensing)</b>	5 to 95% RH	
<b>Environmental Air</b>	No corrosive gases permitted. For use in Pollution Degree 2 environment	
<b>Vibration and Shock</b>	IEC60068-2 and -27	
<b>EMI Emissions</b>	FCC part 15, ICES-003, EN55022	
<b>EMC Immunity</b>	IEC61326-1	
<b>RoHS and WEEE</b>	RoHS (Pb free) and WEEE compliant	
<b>Agency Approvals</b>	UL/cUL 508, CSA C22 per EN61010-1, UL HazLoc (Class 1, Div. 2, Groups A, B, C, D) (UL file #E200031), CSA C 22.2/213/EN60079-15 (Zone 2, Category 3), CE (ATEX)	

General Specifications Cont'd		
<b>Packaging and Protection</b>	SE-MC2U-ST SE-MC2U-SC SE-SW5U SE-SW5U-ST SE-SW5U-SC	UL94VO Lexan, IP30
	SE-SW5U-WT SE-SW5U-ST-WT SE-SW5U-SC-WT SE-SW9U-ST-WT SE-SW9U-SC-WT	Metal case, IP40

Copper RJ45 Ports: (10/100BaseT)	
<b>10/100BaseT ports</b>	Shielded RJ45
<b>Protocols Supported</b>	All standard IEEE 802.3
<b>Ethernet Compliance</b>	IEEE 802.3, 802.3u, 802.3x
<b>Auto-Crossover</b>	Yes, allows you to use straight-through or crossover wired cables
<b>Auto-Sensing Operation</b>	Yes, full and half duplex
<b>Auto-Negotiating</b>	Yes, 10BaseT and 100BaseT
<b>Auto-Polarity</b>	Yes, on the TD and RD pair
<b>Flow Control</b>	Automatic
<b>Ethernet Isolation</b>	1500 VRMS 1 minute
<b>Plug and Play</b>	Yes
<b>Cable Requirements</b>	Twisted pair (Cat5e or better) (shielded recommended)
<b>Max. Cable Distance</b>	100 m

Fiber Port: (100BaseFX multimode)	
<b>100BaseFX Ports</b>	1
<b>Fiber Port Mode</b>	Multimode (mm)
<b>Fiber Port Connector</b>	ST – models SE-XXXX-ST and SE-XXXX-ST-WT SC – models SE-XXXX-SC and SE-XXXX-SC-WT
<b>Optimal Fiber Cable</b>	50/125 or 62.5/125 $\mu$ m
<b>Center Wavelength</b>	1300 nm
<b>Multimode</b>	Links up to 4 km typ.; > Transmitter power (dBm): -21 min, -17 typ, -14 max > Receiver sensitivity (dBm): -34 typ, -31 max
<b>Nominal Max. Distance (full duplex)</b>	4 km
<b>Ethernet Compliance</b>	100BaseFX
<b>Eye Safety (laser)</b>	IEC 60825-1, Class 1; FDA 21 CFR 1040.10 and 1040.11

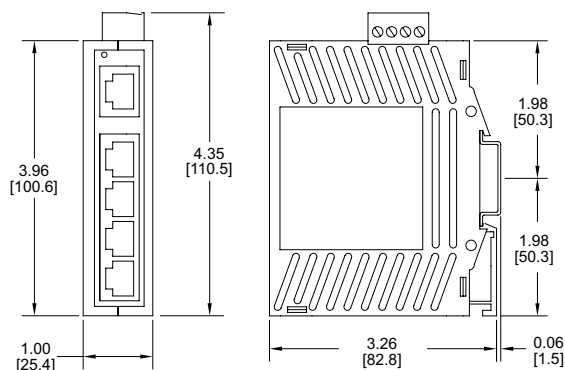
## Complete documentation

Documentation can be downloaded from [www.automationdirect.com](http://www.automationdirect.com).

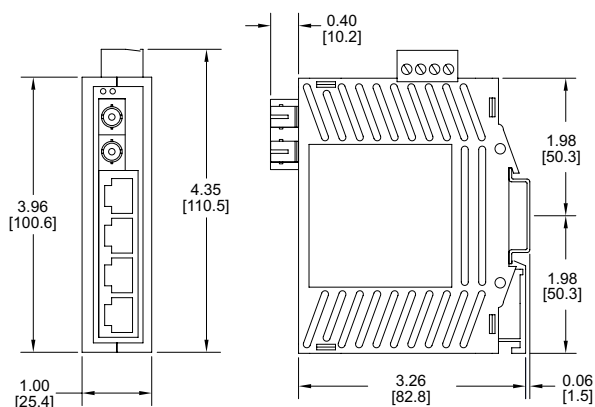
# Stride SE Series Unmanaged Industrial Ethernet Switches and Media Converters

## Dimensions

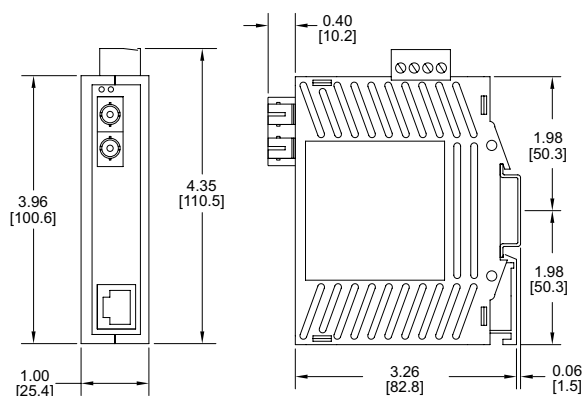
Inches [mm]



**SE-SW5U**



**SE-SW5U-SC**  
**SE-SW5U-ST**



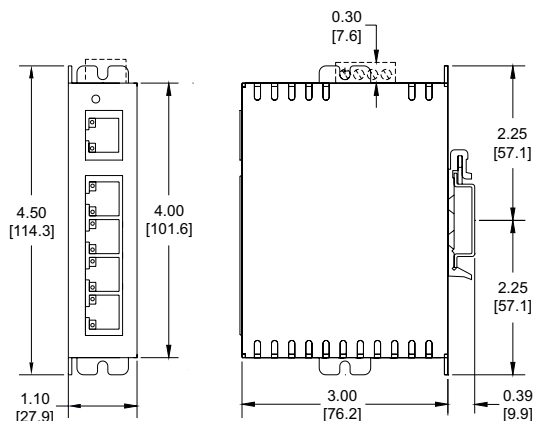
**SE-MC2U-SC**  
**SE-MC2U-ST**

See our website: [www.AutomationDirect.com](http://www.AutomationDirect.com) for complete engineering drawings.

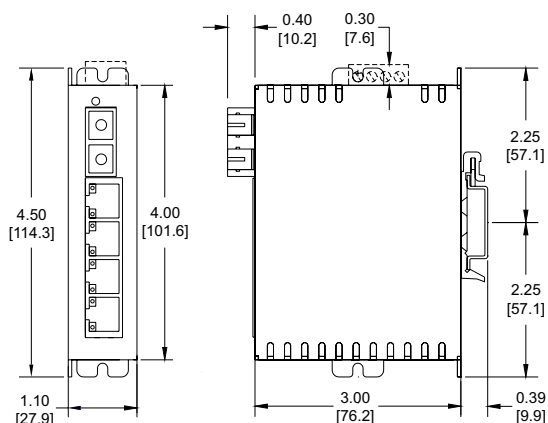
# Stride SE Series Unmanaged Industrial Ethernet Switches and Media Converters

## Dimensions

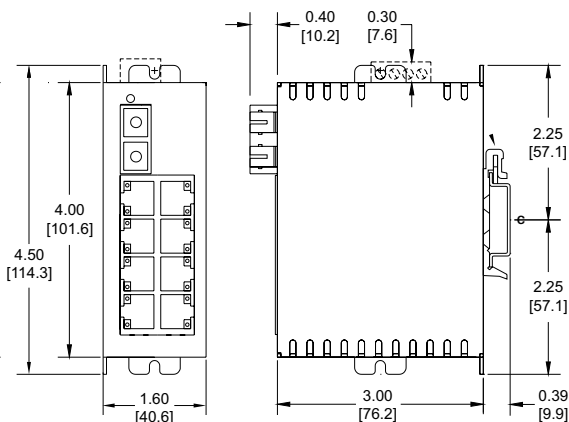
Inches [mm]



**SE-SW5U-WT**



**SE-SW5U-SC-WT**  
**SE-SW5U-ST-WT**



**SE-SW9U-SC-WT**  
**SE-SW9U-ST-WT**

See our website: [www.AutomationDirect.com](http://www.AutomationDirect.com) for complete engineering drawings.

# Stride<sup>®</sup> Unmanaged Industrial Ethernet Switches

## Features

- Reliable connectivity
- Industrially hardened
- Simple installation
- For detailed specifications on all models, see the specific series pages



		SE Series	SE3 Series DIN Rail	SE3 Series IP67
<b>Price</b>				
<b>Broadcast Storm Protection</b>				
<b>Industrial Temperature Ranges</b>				
	<b>Standard Temp</b>	-10 to +60 °C [14 to 140 °F]	-10 to +65 °C [14 to 149 °F]	—
	<b>Wide Temp</b>	-40 to +85 °C [-40 to +185 °F]	-40 to +75 °C [-40 to +167 °F]	-40 to +75 °C [-40 to +167 °F]
<b>Port Connectivity</b>				
	<b>Port Count</b>	2 to 9	5 to 16	5
	<b>RJ45 Port Speed</b>	up to 100 Mbps	up to 1000 Mbps	—
	<b>M12 Port Speed</b>	—	—	up to 100 Mbps
	<b>Fiber Optic Ports</b>	✓	✓	—
	<b>PoE+ Ports</b>	—	✓	—
	<b>SFP Ports</b>	—	✓	—
<b>Mounting</b>				
	<b>DIN Rail Mount</b>	✓	✓	✓
	<b>Panel Mount</b>	✓	✓	✓
<b>Input Power</b>				
	<b>Redundant Power Inputs</b>	✓	✓	✓
	<b>Reverse Polarity Protection</b>	✓	✓	✓
	<b>Power LED</b>	✓	✓	✓
<b>Agency Approvals</b>				
	<b>UL508 or UL61010</b>	✓	✓	✓
	<b>Haz Loc—Class 1 Div 2</b>	✓	✓ (certain models)	—
	<b>IECEX</b>	✓	—	—
	<b>ATEX Zone 2</b>	✓	—	—
	<b>CE</b>	✓	✓	✓
	<b>EN50155 &amp; EN50121</b>	—	—	—
<b>Warranty</b>				
		5 years	5 years	5 years
<b>Activity, Link &amp; Speed LEDs</b>				
		✓	✓	✓