

# Stride SE Series Unmanaged Industrial Ethernet Switches and Media Converters



## Features

- Wide temp range option
- Integrated panel mounting option
- 12, 24 VDC redundant input
- IP40 metal case models
  - IP30 plastic case models
- Haz Loc
- 5-year warranty



IECEX



RoHS Compliant

## Plastic Case Switches

Stride SE Series Unmanaged Models						
Part Number	Price	10/100	Fiber Connector	Input Power	Operating Temp	Agency Approvals
<a href="#"><u>SE-SW5U</u></a>		5	–	2.0 W	-10 to +60°C [+14 to +140°F]	UL/cUL 508, Haz Loc, CE
<a href="#"><u>SE-SW8U</u></a>		8	–	4.0 W		
<a href="#"><u>SE-SW5U-ST</u></a>		4	1 ST	3.0 W		
<a href="#"><u>SE-SW5U-SC</u></a>			1 SC			
<a href="#"><u>SE-SW9U-ST</u></a>		8	1 ST	5.0 W		
<a href="#"><u>SE-MC2U-ST</u></a>		1	1 ST	2.0 W		
<a href="#"><u>SE-MC2U-SC</u></a>			1 SC			

## Metal Case Switches

Stride SE Series Unmanaged Models						
Part Number	Price	10/100	Fiber Connector	Input Power	Operating Temp	Agency Approvals
<a href="#"><u>SE-SW5U-WT</u></a>		5	–	2.0 W	-40 to +85°C [-40 to +185°F]	UL/cUL 508, Haz Loc, CE
<a href="#"><u>SE-SW5U-ST-WT</u></a>		4	1 ST	3.0 W		
<a href="#"><u>SE-SW5U-SC-WT</u></a>		4	1 SC			
<a href="#"><u>SE-SW9U-ST-WT</u></a>		8	1 ST	5.0 W		
<a href="#"><u>SE-SW9U-SC-WT</u></a>		8	1 SC			

# Stride SE Series Unmanaged Industrial Ethernet Switches and Media Converters

General Specifications		
Ethernet Switch Type	Up to 9 ports	
Operating Mode	Store and forward wire speed switching, non-blocking	
Devices Supported	All IEEE 802.3 compliant devices are supported	
Standards	IEEE 802.3, 802.3u, 802.3x	
MAC Addresses	1024 addresses	
Memory Bandwidth	3.2 Gbps	
Latency for 10 Mbps ports	16 μs + frame time (typical)	
Latency for 100 Mbps ports	5 μs + frame time (typical)	
Power Input	Redundant Input Terminals	
Input Power (typical with all ports active at 100 Mbps)	<a href="#">SE-MC2U-ST</a> <a href="#">SE-MC2U-SC</a> <a href="#">SE-SW5U</a> <a href="#">SE-SW5U-WT</a>	2.0 W
	<a href="#">SE-SW5U-ST</a> <a href="#">SE-SW5U-SC</a> <a href="#">SE-SW5U-ST-WT</a> <a href="#">SE-SW5U-SC-WT</a>	3.0 W
	<a href="#">SE-SW8U</a>	4.0 W
	<a href="#">SE-SW9U-ST</a> <a href="#">SE-SW9U-ST-WT</a> <a href="#">SE-SW9U-SC-WT</a>	5.0 W
Input Voltage	10-30 VDC (continuous)—Class 2 Power Supply	
Reverse Power Protection	Yes	
Transient Protection	15,000 watts peak	
Spike Protection	5,000 watts (10x for 10 us)	
Ethernet Isolation	1500 VRMS 1 minute	
Operating Temperature Range	<a href="#">SE-MC2U-ST</a> <a href="#">SE-MC2U-SC</a> <a href="#">SE-SW5U</a> <a href="#">SE-SW8U</a> <a href="#">SE-SW5U-ST</a> <a href="#">SE-SW5U-SC</a> <a href="#">SE-SW9U-ST</a>	-10 to +60°C [+14 to +140°F], cold startup at -10°C [+14°F]
	<a href="#">SE-SW5U-WT</a> <a href="#">SE-SW5U-ST-WT</a> <a href="#">SE-SW5U-SC-WT</a> <a href="#">SE-SW9U-ST-WT</a> <a href="#">SE-SW9U-SC-WT</a>	-40 to +85°C [-40 to +185°F], cold startup at -40°C [-40°F]
Storage Temperature Range	-40 to +85°C [-40 to +185°F]	
Humidity (non-condensing)	5 to 95% RH	
Environmental Air	No corrosive gases permitted. For use in Pollution Degree 2 environment	
Vibration and Shock	IEC60068-2 and -27	
EMI Emissions	FCC part 15, ICES-003, EN55022	
EMC Immunity	IEC61326-1	
RoHS and WEEE	RoHS (Pb free) and WEEE compliant	
Agency Approvals	UL/cUL 508, CSA C22 per EN61010-1, UL HazLoc (Class 1, Div. 2, Groups A, B, C, D) (UL file #E200031), CSA C 22.2/213/EN60079-15 (Zone 2, Category 3), CE (ATEX)	

General Specifications Cont'd		
<b>Packaging and Protection</b>	SE-MC2U-ST SE-MC2U-SC SE-SW5U SE-SW8U SE-SW5U-ST SE-SW5U-SC SE-SW9U-ST	UL94VO Lexan, IP30
	SE-SW5U-WT SE-SW5U-ST-WT SE-SW5U-SC-WT SE-SW9U-ST-WT SE-SW9U-SC-WT	Metal case, IP40

Copper RJ45 Ports: (10/100BaseT)	
<b>10/100BaseT ports</b>	Shielded RJ45
<b>Protocols Supported</b>	All standard IEEE 802.3
<b>Ethernet Compliance</b>	IEEE 802.3, 802.3u, 802.3x
<b>Auto-Crossover</b>	Yes, allows you to use straight-through or crossover wired cables
<b>Auto-Sensing Operation</b>	Yes, full and half duplex
<b>Auto-Negotiating</b>	Yes, 10BaseT and 100BaseT
<b>Auto-Polarity</b>	Yes, on the TD and RD pair
<b>Flow Control</b>	Automatic
<b>Ethernet Isolation</b>	1500 VRMS 1 minute
<b>Plug and Play</b>	Yes
<b>Cable Requirements</b>	Twisted pair (Cat5e or better) (shielded recommended)
<b>Max. Cable Distance</b>	100 meters

Fiber Port: (100BaseFX multimode)	
<b>100BaseFX Ports</b>	1
<b>Fiber Port Mode</b>	Multimode (mm)
<b>Fiber Port Connector</b>	ST – models SE-XXXX-ST and SE-XXXX-ST-WT SC – models SE-XXXX-SC and SE-XXXX-SC-WT
<b>Optimal Fiber Cable</b>	50/125 or 62.5/125 $\mu$ m
<b>Center Wavelength</b>	1300 nm
<b>Multimode</b>	Links up to 4 km typ.; > Transmitter power (dBm): -21 min, -17 typ, -14 max > Receiver sensitivity (dBm): -34 typ, -31 max
<b>Nominal Max. Distance (full duplex)</b>	4 km
<b>Ethernet Compliance</b>	100BaseFX
<b>Eye Safety (laser)</b>	IEC 60825-1, Class 1; FDA 21 CFR 1040.10 and 1040.11

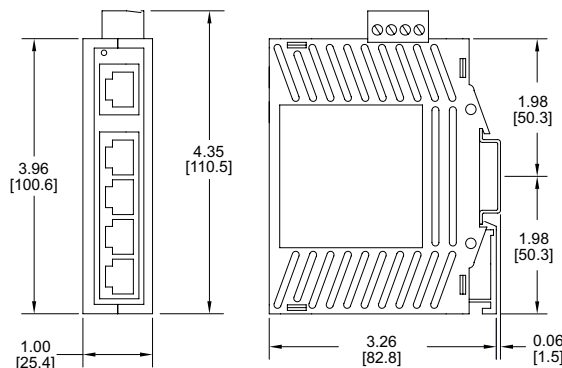
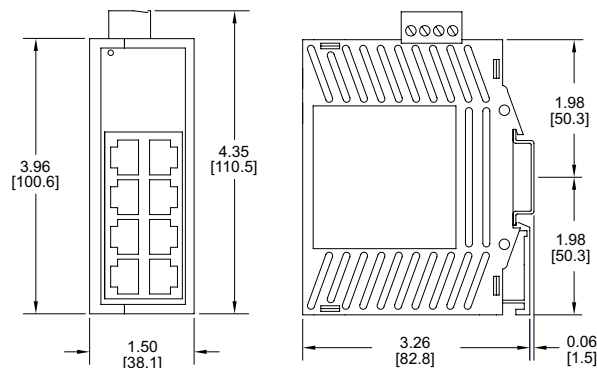
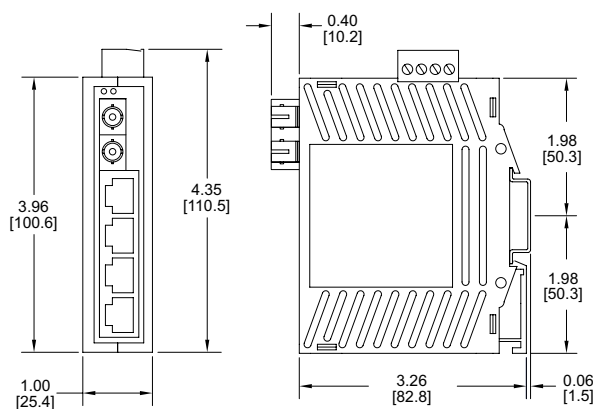
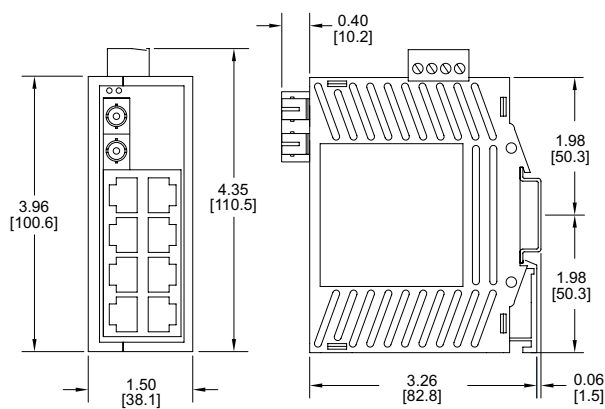
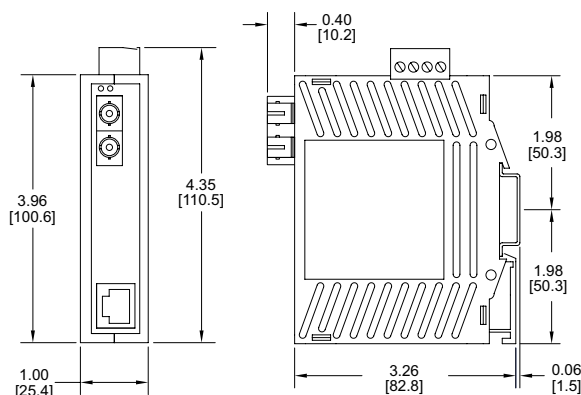
## Complete documentation

Documentation can be downloaded from [www.automationdirect.com](http://www.automationdirect.com).

# Stride SE Series Unmanaged Industrial Ethernet Switches and Media Converters

## Dimensions

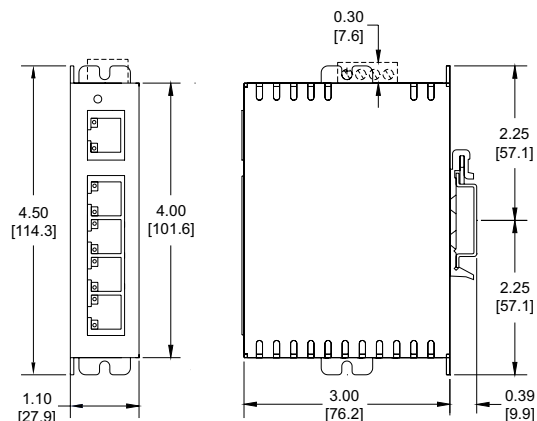
Inches [mm]

**SE-SW5U****SE-SW8U****SE-SW5U-SC**  
**SE-SW5U-ST****SE-SW9U-ST****SE-MC2U-SC**  
**SE-MC2U-ST**See our website: [www.AutomationDirect.com](http://www.AutomationDirect.com) for complete engineering drawings.

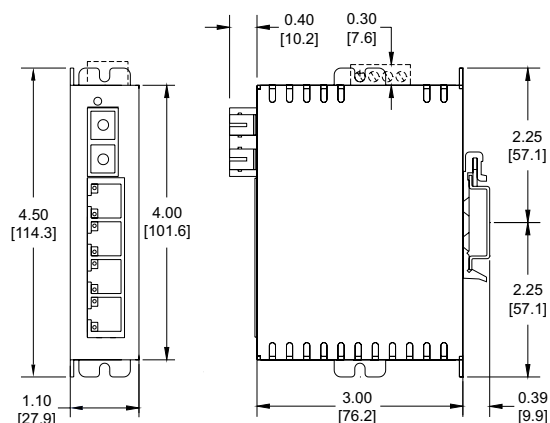
# Stride SE Series Unmanaged Industrial Ethernet Switches and Media Converters

## Dimensions

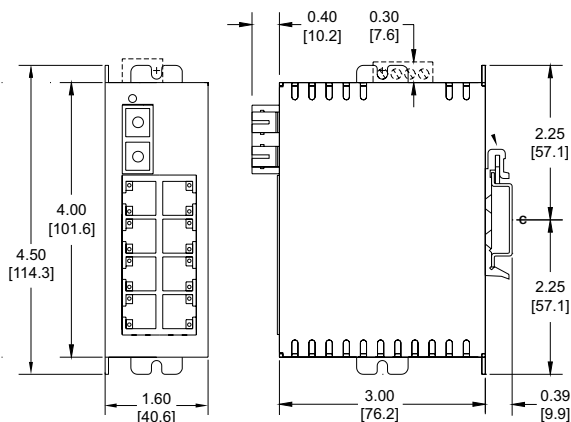
Inches [mm]



**SE-SW5U-WT**



**SE-SW5U-SC-WT**  
**SE-SW5U-ST-WT**



**SE-SW9U-SC-WT**  
**SE-SW9U-ST-WT**

See our website: [www.AutomationDirect.com](http://www.AutomationDirect.com) for complete engineering drawings.

# Stride<sup>®</sup> Unmanaged Industrial Ethernet Switches

## Features

- Reliable connectivity
- Industrially hardened
- Simple installation
- For detailed specifications on all models, see the specific series pages



		SE Series	SE3 Series DIN Rail	SE3 Series IP67
<b>Price</b>				
<b>Broadcast Storm Protection</b>				
		—	—	—
<b>Industrial Temperature Ranges</b>				
	<b>Standard Temp</b>	-10 to +60°C [14 to 140°F]	-10 to +65°C [14 to 149°F]	—
	<b>Wide Temp</b>	-40 to +85°C [-40 to +185°F]	-40 to +75°C [-40 to +167°F]	-40 to +75°C [-40 to +167°F]
<b>Port Connectivity</b>				
	<b>Port Count</b>	2 to 9	5 to 16	5
	<b>RJ45 Port Speed</b>	up to 100 Mbps	up to 1000 Mbps	—
	<b>M12 Port Speed</b>	—	—	up to 100 Mbps
	<b>Fiber Optic Ports</b>	✓	✓	—
	<b>PoE+ Ports</b>	—	✓	—
	<b>SFP Ports</b>	—	✓	—
<b>Mounting</b>				
	<b>DIN Rail Mount</b>	✓	✓	✓
	<b>Panel Mount</b>	✓	✓	✓
<b>Input Power</b>				
	<b>Redundant Power Inputs</b>	✓	✓	✓
	<b>Reverse Polarity Protection</b>	✓	✓	✓
	<b>Power LED</b>	✓	✓	✓
<b>Agency Approvals</b>				
	<b>UL508 or UL61010</b>	✓	✓	✓
	<b>Haz Loc—Class 1 Div 2</b>	✓	✓ (certain models)	—
	<b>IECEX</b>	✓	—	—
	<b>ATEX Zone 2</b>	✓	—	—
	<b>CE</b>	✓	✓	✓
	<b>EN50155 &amp; EN50121</b>	—	—	—
<b>Warranty</b>				
		5 years	5 years	5 years
<b>Activity, Link &amp; Speed LEDs</b>				
		✓	✓	✓