

Contrinex Safety Light Curtains Accessories

| Safety Light Curtains Accessories Overview | | | |
|--|-------|---|--------------------------|
| Part Number | Price | Description | Use With |
| YXL-0001-000 | | Laser alignment tool for safety light curtains, class 2 laser, range up to 50m, useable and clippable to YBB and YCA light curtains models, 2 AAA batteries included. | YBB Series YCA Series |
| YXW-0001-000 | | Safety light curtain mounting brackets for top and bottom mounting. Plastic. 2/pk. | |
| YXW-0003-000 | | Safety light curtain sliding T-nuts for side mounting. Metal. 2/pk. Ideal torque from M5x0.8 thread is 6 N•m [4.42 lb•ft, 53.1 lb•in]. | |



[YXW-0001-000](#)



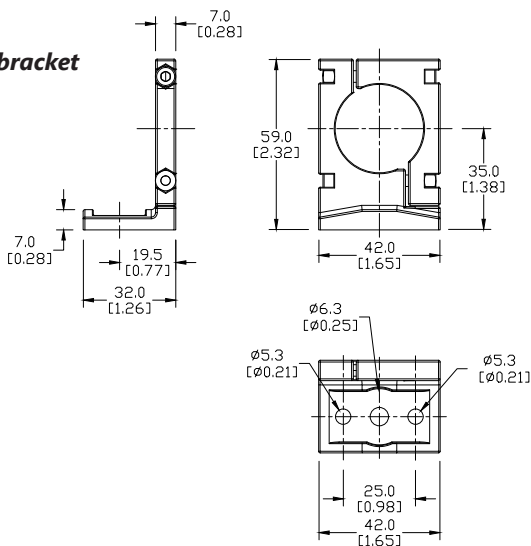
[YXW-0003-000](#)



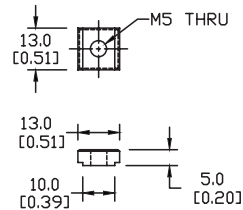
[YXL-0001-000](#)

Dimensions (mm [in])

Mounting bracket



T-Nuts for side mounting

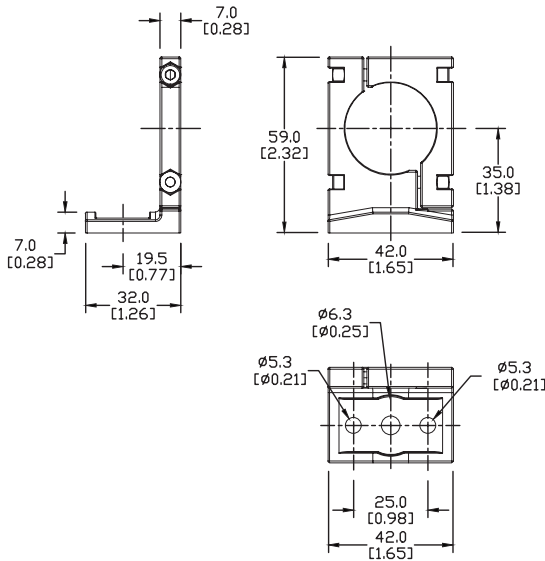


Contrinex Safety Light Curtains Accessories

Mounting bracket



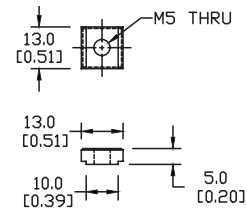
YXW-0001-000



T-Nuts for side mounting



YXW-0003-000



Laser Alignment Tool

- Clips on YBB and YCA Curtains/Barriers
- High quality lens for narrow output beam
- Up to 50m [164ft] range
- <1mW output power
- Standard AA batteries included

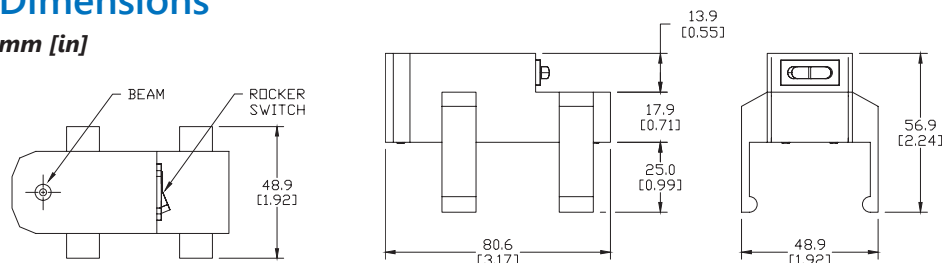


YXL-0001-000

| Laser Alignment Tool YXL-0001-000 Specifications | |
|--|----------------------------------|
| Supply Voltage Range | 2.5 – 3.3 VDC |
| Laser Module Optical Output Power | < 1 mW (Class 2) |
| Range | 50m [164ft] |
| Ambient Temperature Range | 0 to 40 °C [32 to 104 °F] |
| Storage Temperature Range | 0 to 60b°C [32 to 140 °F] |
| Wavelength | 655nm ± 1% |
| Laser Beam Spot Size at 10 m | < 10mm |
| Divergence Angle | 1.1 mrad |
| Housing Material | PA with 30% fiberglass |
| Mounting | Clippable onto YBB / YCA devices |
| Weight | 95g (0.21 lb) |

Dimensions

mm [in]



See our website www.AutomationDirect.com for complete engineering drawings.

Warning: Safety products sold by AutomationDirect are Safety components only.

The purchaser/installer is solely responsible for the application of these components and ensuring all necessary steps have been taken to assure each application and use meets all performance and applicable safety requirements and/or local, national and/or international safety codes as required by the application. AutomationDirect cannot certify that our products used solely or in conjunction with other AutomationDirect or other vendors' products will assure safety for any application.

Any person using or applying any products sold by AutomationDirect is responsible for learning the safety requirements for their individual application and applying them, and therefore assumes all risks, and accepts full and complete responsibility for the selection and suitability of the product for their respective application. AutomationDirect does not provide design or consulting services, and cannot advise whether any specific application or use of our products would ensure compliance with the safety requirements for any application.

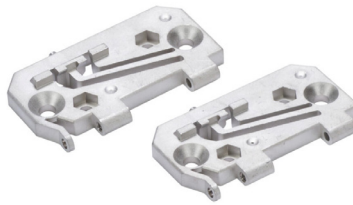


Contrinex Safety Light Curtains YBxS Accessories

| Contrinex Safety Light Curtains YBxS Accessories | | | | | |
|--|-------|---|----------------------------------|----------------------|----------------------------|
| Part Number | Price | Description | Material | Mounting | Use With |
| <u>YXW-0005-000</u> | | Contrinex mounting bracket. Package of 2. | Glass fiber reinforced polyamide | Top and bottom mount | YBxS series light curtains |
| <u>YXW-0006-000</u> | | Contrinex mounting bracket. Package of 2. | Stainless steel | Side mount | YBxS series light curtains |
| <u>YXW-0007-000</u> | | Contrinex mounting bracket. Package of 2. | Stainless steel | Side or end mount | YBxS series light curtains |



[YXW-0005-000](#)



[YXW-0006-000](#)



[YXW-0007-000](#)



Warning: Safety products sold by AutomationDirect are Safety components only.

The purchaser/installer is solely responsible for the application of these components and ensuring all necessary steps have been taken to assure each application and use meets all performance and applicable safety requirements and/or local, national and/or international safety codes as required by the application. AutomationDirect cannot certify that our products used solely or in conjunction with other AutomationDirect or other vendors' products will assure safety for any application.

Any person using or applying any products sold by AutomationDirect is responsible for learning the safety requirements for their individual application and applying them, and therefore assumes all risks, and accepts full and complete responsibility for the selection and suitability of the product for their respective application. AutomationDirect does not provide design or consulting services, and cannot advise whether any specific application or use of our products would ensure compliance with the safety requirements for any application.