

NEMA 3R Wiring Trough



Applications

These enclosures are designed to protect wiring against rain, sleet and snow in outdoor installations, or indoors against dripping water.

Construction

- Trough and cover fabricated from 16-gauge carbon steel
- Drip shield top and smooth seamless sides, front and back, prevent rain, snow and sleet from entering the enclosure
- Embossed mounting holes are conveniently located on the back
- A slip-on removable cover is securely fastened with screws located along the bottom edge
- Knockouts are provided on bottom of enclosure

Finish

- ANSI-61 gray polyester powder inside and out over phosphatized surfaces

Listings

- UL 870
- UL File E32576
- CSA File LL66078
- Meets NEMA/EEMAC 1 and 3R requirements



Shipping Schedule

Same day	1 - 5 days	1 - 7 days	1 - 15 days	1 - 20 days
----------	------------	------------	-------------	-------------

Color indicates shipping lead time in business days.

RSCG Series NEMA 3R Wiring Trough

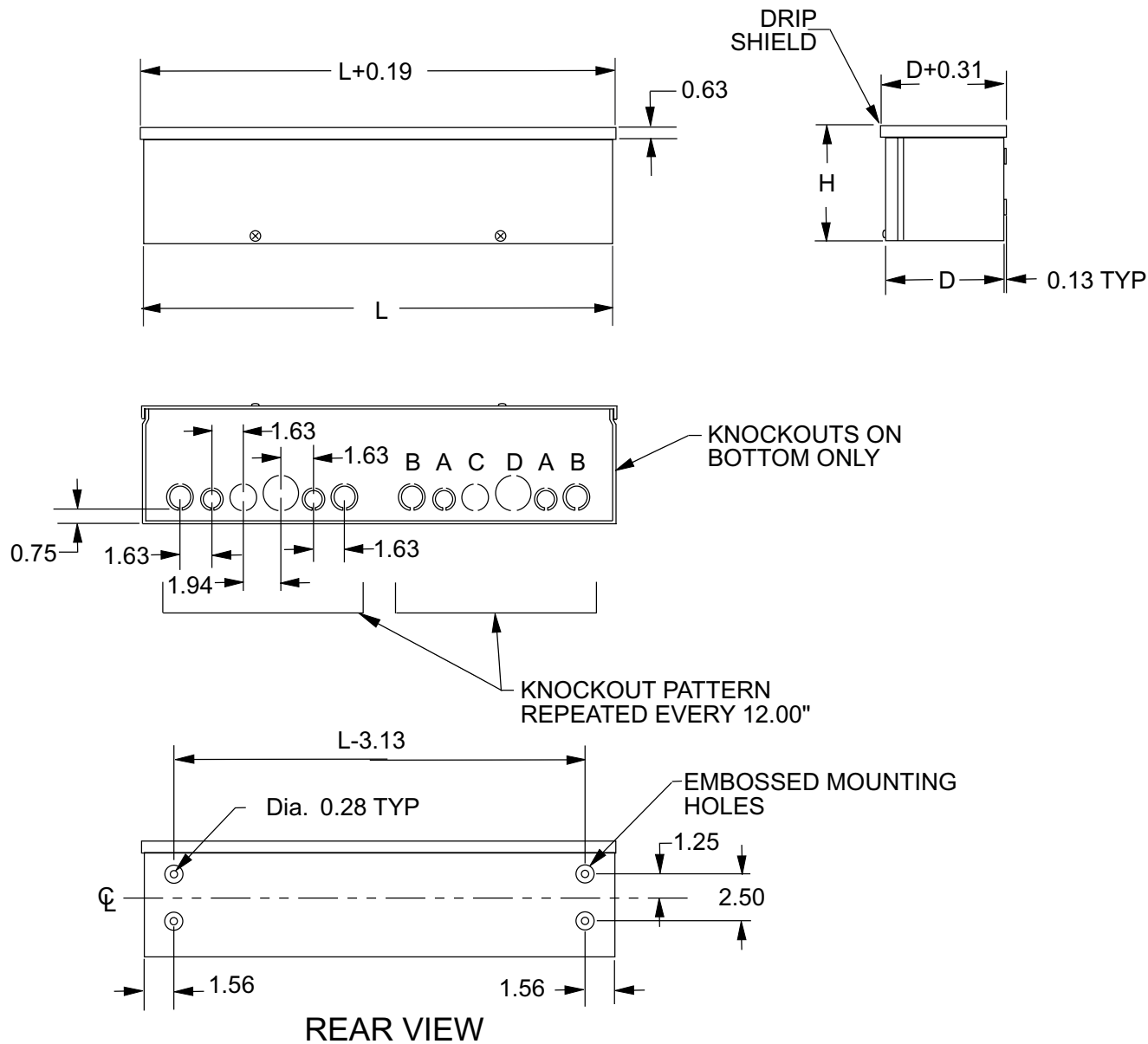
Part Number	Price	Body/Door Steel Gauge	Enclosure Size HxDxL	Knockout Pattern
RSCG040412	—	16/16	4.00 x 4.00 x 12.00 [102 x 102 x 305]	B-A-C-D-A-B repeated
RSCG040424	—	16/16	4.00 x 4.00 x 24.00 [102 x 102 x 610]	B-A-C-D-A-B repeated
RSCG040436	—	16/16	4.00 x 4.00 x 36.00 [102 x 102 x 914]	B-A-C-D-A-B repeated
RSCG040448	—	16/16	4.00 x 4.00 x 48.00 [102 x 102 x 1219]	B-A-C-D-A-B repeated
RSCG040460	Retired	16/16	4.00 x 4.00 x 60.00 [102 x 102 x 1524]	B-A-C-D-A-B repeated
RSCG060612	—	16/16	6.00 x 6.00 x 12.00 [152 x 152 x 305]	B-A-C-D-A-B repeated
RSCG060624	—	16/16	6.00 x 6.00 x 24.00 [152 x 152 x 610]	B-A-C-D-A-B repeated
RSCG060636	—	16/16	6.00 x 6.00 x 36.00 [152 x 152 x 914]	B-A-C-D-A-B repeated
RSCG060648	—	16/16	6.00 x 6.00 x 48.00 [152 x 152 x 1219]	B-A-C-D-A-B repeated
RSCG060660	Retired	16/16	6.00 x 6.00 x 60.00 [152 x 152 x 1524]	B-A-C-D-A-B repeated
RSCG060672	Retired	16/16	6.00 x 6.00 x 72.00 [152 x 152 x 1829]	B-A-C-D-A-B repeated
RSCG080824	Retired	16/16	8.00 x 8.00 x 24.00 [203 x 203 x 610]	B-A-C-D-A-B repeated
RSCG080836	Retired	16/16	8.00 x 8.00 x 36.00 [203 x 203 x 914]	B-A-C-D-A-B repeated
RSCG080848	Retired	16/16	8.00 x 8.00 x 48.00 [203 x 203 x 1219]	B-A-C-D-A-B repeated
RSCG080860	Retired	16/16	8.00 x 8.00 x 60.00 [203 x 203 x 1524]	B-A-C-D-A-B repeated
RSCG080872	Retired	16/16	8.00 x 8.00 x 72.00 [203 x 203 x 1829]	B-A-C-D-A-B repeated

Note: Dimensions in inches (millimeters).
Letters in table correspond to letters on dimensional drawings.

NEMA 3R Wiring Trough



Dimensions



KNOCKOUT SIZES

B = 3/4" x 1" CONCENTRIC KO
 A = 1/2" x 3/4" CONCENTRIC KO
 C = 1" SOLID KO
 D = 1-1/4" SOLID KO

G19RSCG