

# WST Series Weld Slag Resistant Inductive Proximity Sensors



## M30 (30mm)

- Low cost/high performance
- Weld slag resistant coating
- Inductive sensor
- Full metal housing
- Increased sensing range
- Gold-plated contacts
- Flush mounting
- Lifetime warranty



WST Series M30 Inductive Proximity Selection Chart									
Part Number	Price	Sensing Range	Mounting	Output State	Logic	Voltage	Connection	Wiring	Dimensions
<a href="#">WST-AP-3H</a>		15mm [0.59 mm]	Flush	N.O.	PNP	10 - 30 VDC	4-pin M12 quick-disconnect	Diagram 1	Figure 1
<a href="#">WST-A0-3E</a>		12mm [0.47 mm]					PNP/NPN	10-36 VDC	4-pin M12 with 0.3 m cable
<a href="#">WST-A0-3A</a>					3m axial cable	Diagram 3			

## Wiring Diagrams

Diagram 1

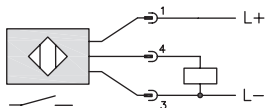


Diagram 2

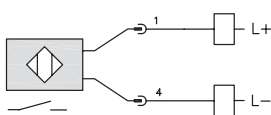
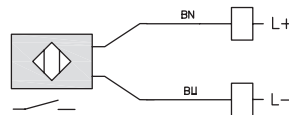


Diagram 3



## Connectors

4-pin M12 NPN



4-pin M12 PNP



4-pin M12 0.3m



## Dimensions

mm [inches]

Figure 1

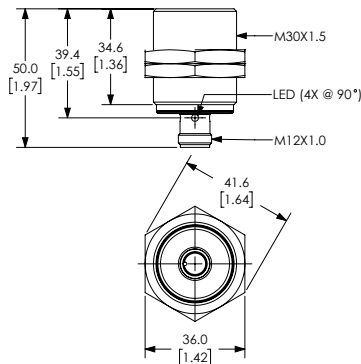


Figure 2

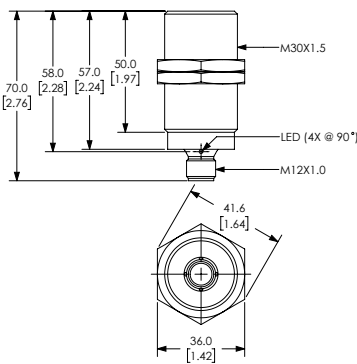
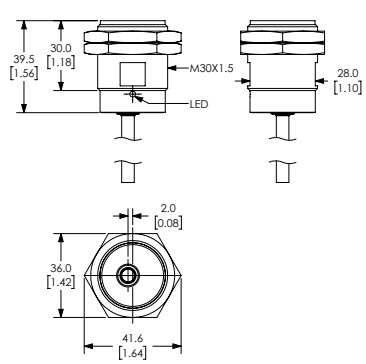


Figure 3



# WST Series Weld Slag Resistant Inductive Proximity Sensors

WST Series M30 Inductive Proximity Specifications			
Models	<i>WST-AP-3H</i>	<i>WST-A0-3E</i>	<i>WST-A0-3A</i>
<b>Mounting Type</b>	Flush		
<b>Nominal Sensing Distance</b>	15mm [0.59 in]	12mm [0.47 in]	
<b>Operating Distance</b>	0 - 12.15 mm		
<b>Material Correction Factors</b>	See the <a href="#">Material Influence table</a>		
<b>Output Type</b>	N.O.		
<b>Operating Voltage</b>	10 to 30 VDC	10 to 36 VDC	
<b>No-load Supply Current</b>	< 10 mA	NA	
<b>Operating (Load) Current</b>	< 100 mA		
<b>Off-state Leakage Current</b>	NA	< 0.6 mA	
<b>Voltage Drop</b>	< 2.5 V		
<b>Switching Frequency</b>	2Hz	25Hz	
<b>Differential Travel (% of Nominal Distance)</b>	3 - 15	1 - 20	
<b>Repeat Accuracy</b>	NA		
<b>Ripple</b>	NA		
<b>Time Delay Before Availability (tv)</b>	NA		
<b>Short Circuit Protection</b>	Yes		
<b>Operating Temperature</b>	-40 to 85°C [-40 to 185°F]	-25 to 70°C [-13 to 158°F]	
<b>Protection Degree (DIN 40050)</b>	IP65 / IP66 / IP67 / IP68 / IP69K	IP67	
<b>LED Indicators</b>	Illuminated when energized		
<b>Housing Material</b>	Stainless steel 316L / 1.4404 with anti-spatter ceramic (Polytetrafluoroethylene [PTFE]) coating		
<b>Sensing Face Material</b>	active face: stainless steel 316L 1.4404 anti-spatter		
<b>Shock/Vibration</b>	See <a href="#">Proximity Sensor Terminology</a>		
<b>Weight</b>	0.115 kg	0.135 kg	0.227 kg
<b>Connection</b>	4-pin M12 quick-disconnect	PUR cable / 0.3 m; 2 x 0.5 mm <sup>2</sup> ; with 4-pin M12 quick-disconnect	PUR cable / 3 m; 2 x 0.5 mm <sup>2</sup>
<b>Agency Approvals</b>	cULus E328811, CE		

To obtain the most current agency approval information, see the Agency Approval Checklist section on the specific part number's web page.