

PEW Series Inductive Proximity Sensors



M8 (8mm) stainless steel - DC

- Four flush-mountable models available
- Low cost/high performance
- Metal sensing face for extreme environments
- LED status indicators are visible at a wide angle.
- Sensing face withstands up to 1450 psi.
- M8 or M12 quick-disconnect models
- 2 M8 stainless steel lock nuts included
- Purchase cable separately
- Lifetime warranty



PEW Series DC Inductive Prox Selection Chart								
Part Number	Price	Sensing Range	Mounting	Output State	Logic	Connection	Wiring	Dimensions
Extended Distance								
PEW-AN-1F		2 mm (0.08 in)	Flush	N.O.	NPN	M8 (8mm) quick-disconnect	Diagram 1	Figure 1
PEW-AP-1F		2 mm (0.08 in)	Flush	N.O.	PNP	M8 (8mm) quick-disconnect	Diagram 2	Figure 1
PEW-AN-1H		2 mm (0.08 in)	Flush	N.O.	NPN	M12 (12mm) quick-disconnect	Diagram 1	Figure 2

Wiring diagrams

Diagram 1

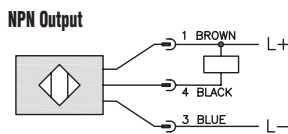
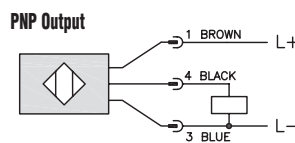
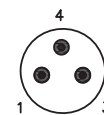


Diagram 2

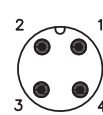


Connectors

M8 connector



M12 connector



Dimensions mm[inches]

Figure 1

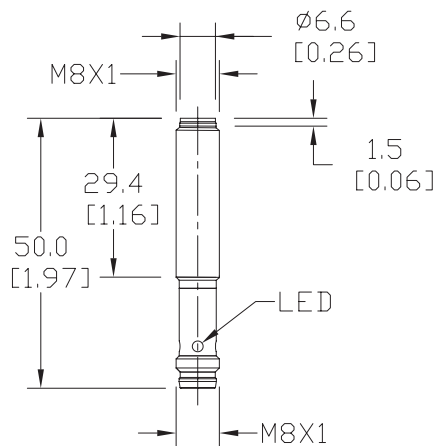
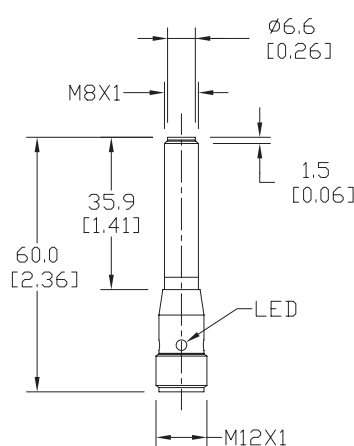


Figure 2



PEW Series Inductive Proximity Sensors

Specifications	PEW-AN-1F	PEW-AP-1F	PEW-AN-1H	PEW-AP-1H
Mounting Type	Flush			
Nominal Sensing Distance	2 mm (0.08 in) ± 10%			
Operating Distance	0 to 1.6 mm (0.06 in)			
Material Correction Factors	See the Material influence table			
Output Type	NPN, N.O. only	PNP, N.O. only	NPN, N.O. only	PNP, N.O. only
Operating Voltage	10 to 36 VDC			
No-load Supply Current	< 20 mA			
Operating (Load) Current	100 mA			
Off-state (Leakage) Current	< 0.1 mA			
Voltage Drop	< 2.5 V			
Switching Frequency	100Hz			
Differential Travel (% of nominal Distance)	1 to 20% of Sr		1 to 15% of Sr	
Repeat Accuracy	NA			
Ripple	NA			
Reverse Polarity Protection	Yes			
Short-Circuit Protection	Yes (non-latching)			
Operating Temperature	-25° to 70°C (-13° to 158°F)			
Protection Degree (DIN 40050)	IEC IP67		IEC IP67/68	
Indication/Switch Status	4 Yellow			
Housing Material	316L stainless steel			
Sensing Face Material	316L stainless steel			
Shock/Vibration	See Proximity Sensor Terminology			
Tightening Torque	3.5 Nm (2.58 lb-ft)			
Weight	18g (0.63 oz)		20g (0.71 oz)	
Connection	M8 plug with gold-plated pins		M12 plug with gold-plated pins	
Agency Approvals	cULus file E328811, CE, RoHS			

Accessories for 8mm Sensors

Axial Mounting Bracket

Mounting bracket, axial, zinc-plated steel. For use with 8mm sensors. Has two mounting holes (use 3 mm screws) and allows the rotation of an optical axis for axial sensors. Hexagonal nuts not included.

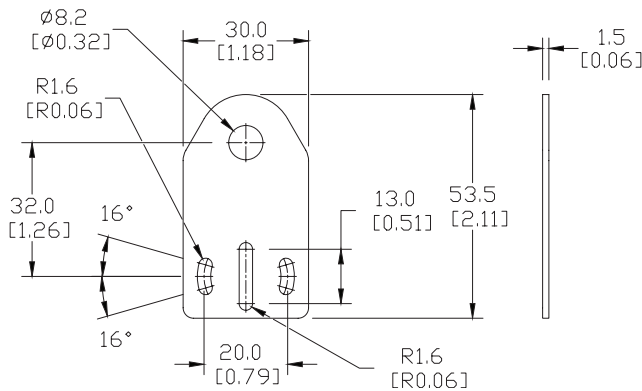
Accessories for 8mm Sensors			
Part Number	Price	Description	Weight [lb]
ST08A		Mounting bracket, axial, zinc plated steel. For use with 8mm sensors.	0.04



ST08A

Dimensions

mm [inches]



Right-angle Mounting Bracket

Mounting bracket, right-angle, zinc-plated steel. For use with 8mm sensors. Has two mounting holes (use 3mm screws) and allows the rotation of an optical axis for right-beam-angle-adaptor sensors. Hexagonal nuts not included.

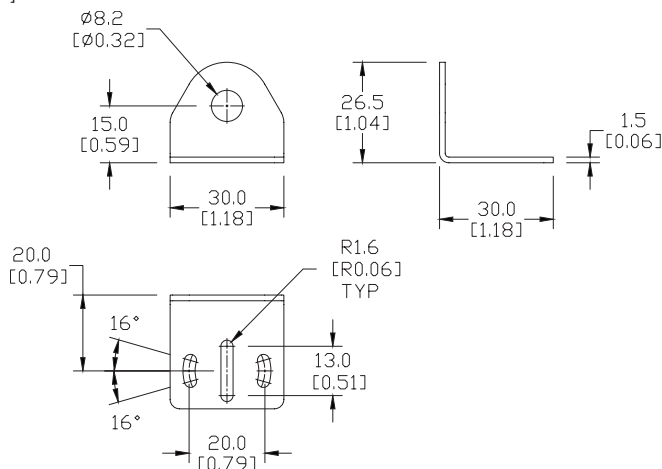
Accessories for 8mm Sensors			
Part Number	Price	Description	Weight [lb]
ST08C		Mounting bracket, right-angle, zinc plated steel. For use with 8mm sensors.	0.04



ST08C

Dimensions

mm [inches]



See our website: www.AutomationDirect.com for complete engineering drawings

Accessories for 8mm Sensors

Right-angle Mounting Bracket

Mounting bracket, right-angle, plastic. For use with 8mm sensors.

Accessories for 8mm Sensors				
Part Number	Price	Description	Drawing Link	Weight [lb]
OPT2101		Wenglor mounting bracket, right-angle, plastic. For use with 8mm sensors.	PDF	0.02



OPT2101

Right-angle Swivel Mounting Systems

Mounting bracket, right-angle swivel, 360 degree vertical and horizontal adjustment. For use with 8mm sensors. Available in all stainless steel or with an aluminum head and stainless steel mounting plate.

Accessories for 8mm Sensors						
Part Number	Price	Description	Mounting Head	Mounting Plate	Drawing Link	Weight [lb]
OPT2112		Wenglor mounting bracket, right-angle swivel, 360 degree vertical and horizontal adjustment, aluminum, 12mm rod mount. For use with 8mm sensors.	Aluminum	304 Stainless Steel	PDF	0.14
OPT2113		Wenglor mounting bracket, right-angle swivel, 360 degree vertical and horizontal adjustment, 304 stainless steel, 12mm rod mount. For use with 8mm sensors.	304 Stainless Steel	304 Stainless Steel	PDF	0.26

Note: 304 Stainless steel mounting rods sold separately: **OPT2109** (200mm length), **OPT2110** (300mm length), and **OPT2111** (500mm length).



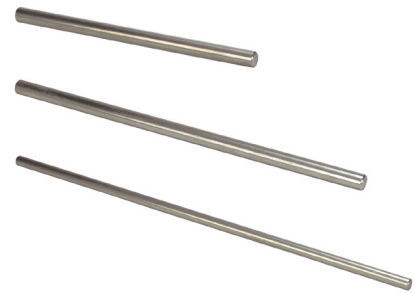
OPT2112 & OPT2113

Mounting Rods and Brackets

Mounting Rods

304 Stainless steel rods for mounting swivel brackets OPT2112 - OPT2127. Available in three lengths: 200mm, 300mm, and 500mm. 12mm diameter.

Mounting Rods for OPT2112-2127 Swivel Mounting Brackets				
Part Number	Price	Description	Drawing Link	Weight lb (g)
OPT2109		Wenglor mounting rod, 12mm diameter, 200mm length, 304 stainless steel.	PDF	0.41 (185.97)
OPT2110		Wenglor mounting rod, 12mm diameter, 300mm length, 304 stainless steel.	PDF	0.60 (272.16)
OPT2111		Wenglor mounting rod, 12mm diameter, 500mm length, 304 stainless steel.	PDF	0.98 (444.52)



Right-angle Mounting Bracket

Mounting bracket, right-angle, nickel-plated brass. For use with 12mm mounting rods OPT2109, OPT2110 & OPT2111.

Right-angle Mounting Brackets for 12mm Sensors				
Part Number	Price	Description	Drawing Link	Weight lb (g)
OPT2108		Wenglor mounting bracket, right-angle, nickel plated brass. For use with 12mm mounting rods OPT2109, OPT2110 & OPT2111.	PDF	0.07 (31.8)

