



DW Series 30mm Stainless Steel Triple Sensing Proximity Sensors

M30 (30mm) stainless steel – DC



- 30mm threaded triple distance proximity sensor
- 40mm sensing
- Complete overload protection
- IP68/IP69k rated
- Two M30 lock nuts included
- Stainless steel construction
- One-piece for harsh duty applications
- LED status indicator
- Lifetime warranty



| DW Series 30mm Stainless Steel Triple Sensing Inductive Proximity Selection Chart | | | | | | | | | |
|---|-------|------|-----------------|-----------|--------------|-------|-------------------------|-----------|------------|
| Part Number | Price | Size | Sensing Range | Mounting | Output State | Logic | Connection | Wiring | Dimensions |
| Triple Distance (Non-flush) | | | | | | | | | |
| DW-AD-711-M30 | | M30 | 40mm [1.574 in] | Non-flush | N.O. | NPN | 2m [6.5 ft] axial cable | Diagram 1 | Figure 1 |
| DW-AD-713-M30* | | | | | N.O. | PNP | 2m [6.5 ft] axial cable | Diagram 2 | Figure 1 |
| DW-AS-711-M30-002 | | | | | N.O. | NPN | M12 quick-disconnect | Diagram 3 | Figure 2 |
| DW-AS-713-M30-002* | | | | | N.O. | PNP | M12 quick-disconnect | Diagram 4 | Figure 2 |
| DW-AD-712-M30 | | | | | N.C. | NPN | 2m [6.5 ft] axial cable | Diagram 1 | Figure 1 |
| DW-AD-714-M30 | | | | | N.C. | PNP | 2m [6.5 ft] axial cable | Diagram 2 | Figure 1 |
| DW-AS-712-M30-002 | | | | | N.C. | NPN | M12 quick-disconnect | Diagram 3 | Figure 2 |
| DW-AS-714-M30-002 | | | | | N.C. | PNP | M12 quick-disconnect | Diagram 4 | Figure 2 |

*IO-Link Model

Wiring diagrams

Diagram 1

NPN Cable

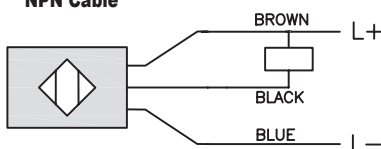
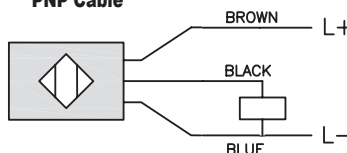


Diagram 2

PNP Cable



Connectors

M12 connector

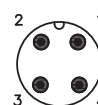


Diagram 3

NPN Connector

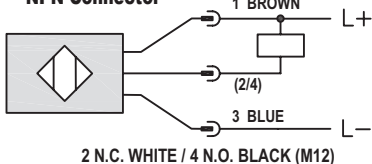
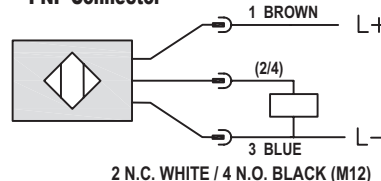


Diagram 4

PNP Connector



DW Series 30mm Stainless Steel Triple Sensing Proximity Sensors

DW Series 30mm Stainless Steel Triple Sensing Inductive Proximity Specifications

| Mounting Type | Non-flush |
|---|--|
| Nominal Sensing Distance | 40mm [1.574 in] |
| Operating Distance | NA |
| Material Correction Factors | See the Material influence table |
| Output Type | NPN or PNP, N.O. or N.C. |
| Operating Voltage | 10 to 30 VDC |
| No-load Supply Current | ≤ 10mA |
| Operating (Load) Current | ≤ 200mA |
| Off-state (Leakage) Current | ≤ 0.1 mA |
| Voltage Drop | ≤ 2V |
| Switching Frequency | ≤ 90 Hz |
| Differential Travel (% of Nominal Distance) | ≤ 10% |
| Repeat Accuracy | 2.0 mm |
| Ripple | ≤ 20% |
| Time Delay Before Availability (tv) | ≤ 40ms |
| Reverse Polarity Protection | Yes |
| Short-Circuit Protection | Yes |
| Operating Temperature | -25 to 85°C [-13 to 185°F] |
| Protection Degree (DIN 40050) | IP68/IP69K |
| Indication/Switch Status | Yellow LED |
| Housing Material | Stainless steel |
| Sensing Face Material | Stainless steel |
| Shock/Vibration | IEC 60947-5-2/7.4 |
| Tightening Torque | -- |
| Weight | 196g [6.91 oz], 144g [5.08 oz] |
| Connection | 2m [6.5 ft] cable, M12 connection |
| IO-Link | PNP/N.O. Version Only |
| Agency Approvals | CE, cULus E239373 |

To obtain the most current agency approval information, see the Agency Approval Checklist section on the specific part number's web page.

Dimensions

mm [inches]

Figure 1

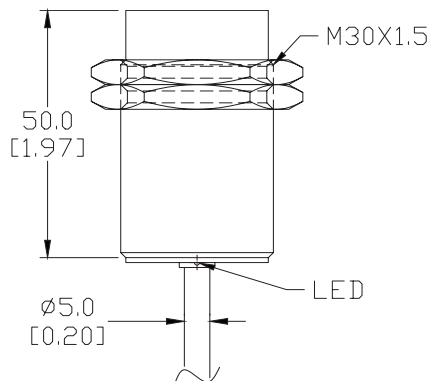
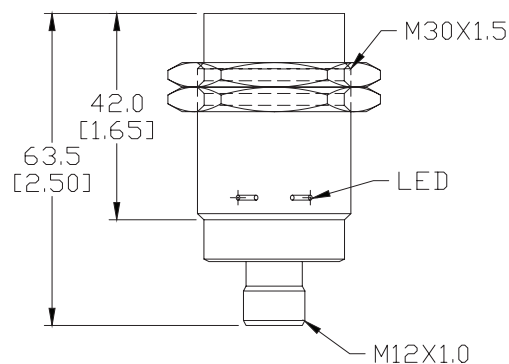


Figure 2



See our website: www.AutomationDirect.com for complete Engineering drawings.

Accessories for 30mm Sensors

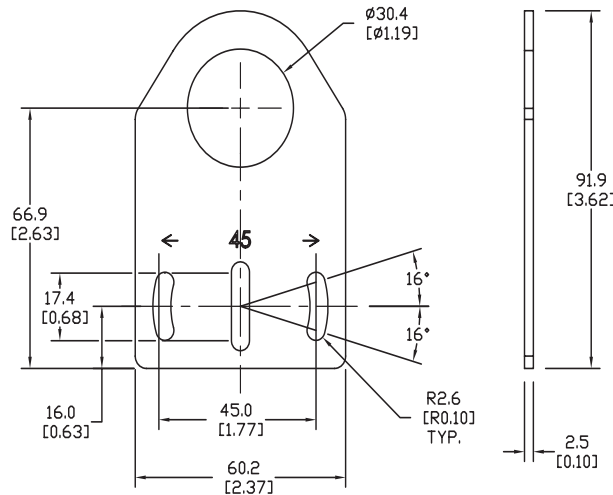
Axial Mounting Bracket

Mounting bracket, axial, zinc-plated steel. For use with 30mm sensors. Has two mounting holes (use 5mm screws) and allows the rotation of an optical axis for right-beam-angle-adaptor sensors. Hexagonal nuts not included.

| Accessories for 30mm Sensors | | | |
|------------------------------|-------|--|---------------|
| Part Number | Price | Description | Weight lb [g] |
| ST30A | | Micro Detectors mounting bracket, axial, zinc plated steel. For use with 30mm sensors. | 0.18 [81.7] |

Dimensions

mm [inches]



ST30A

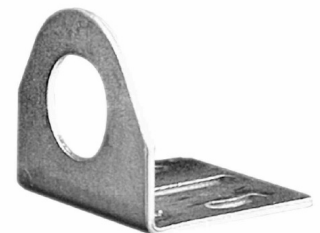
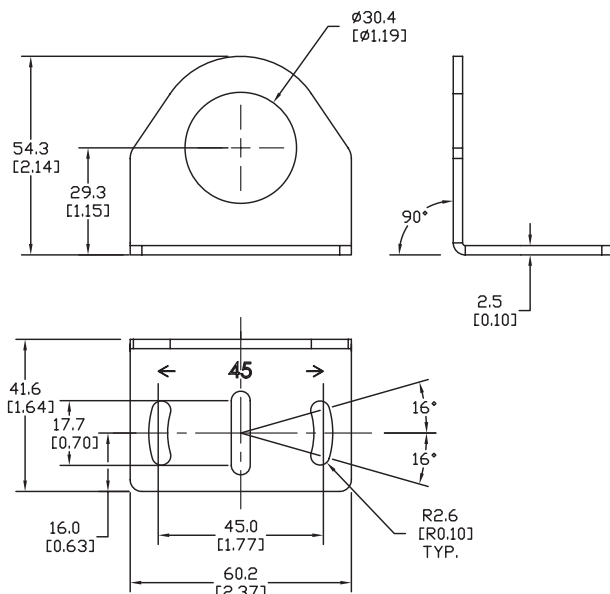
Right-angle Mounting Bracket

Mounting bracket, right-angle, zinc-plated steel. For use with 30mm sensors. Has two mounting holes (use 5mm screws) and allows the rotation of an optical axis for axial sensors. Hexagonal nuts not included.

| Accessories for 30mm Sensors | | | |
|------------------------------|-------|--|---------------|
| Part Number | Price | Description | Weight lb [g] |
| ST30C | | Micro Detectors mounting bracket, right-angle, zinc plated steel. For use with 30mm sensors. | 0.18 [81.7] |

Dimensions

mm [inches]



ST30C

Accessories for 30mm Sensors

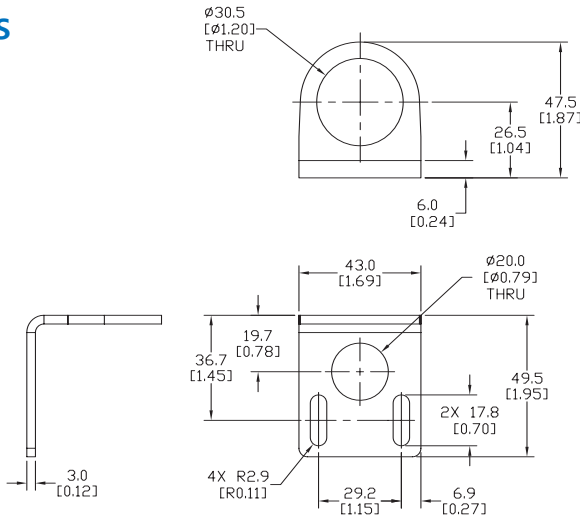
Right-angle Mounting Bracket

Mounting bracket, right-angle, 304 stainless steel. For use with 30mm sensors.

| Accessories for FW Series Sensors | | | |
|-----------------------------------|-------|---|----------------|
| Part Number | Price | Description | Weight lb [g] |
| ST30C6W | | AutomationDirect mounting bracket, right-angle, 304 stainless steel. For use with 30mm sensors. | 0.15 (68.0) |

Dimensions

mm [inches]



[ST30C6W](#)

Right-angle Swivel Mounting Systems

Mounting bracket, right-angle swivel, 360 degree vertical and horizontal adjustment, 12mm rod mount. For use with 30mm sensors. Available in all 304 stainless steel or with an aluminum head with a 304 stainless steel mounting plate.

| Accessories for 30mm Sensors | | | | | | |
|------------------------------|-------|--|---------------------|---------------------|---------------------|----------------|
| Part Number | Price | Description | Mounting Head | Mounting Plate | Drawing Link | Weight lb [g] |
| OPT2118 | | Wenglor mounting bracket, right-angle swivel, 360 degree vertical and horizontal adjustment, aluminum, 12mm rod mount. For use with 30mm sensors. | Aluminum | 304 Stainless steel | PDF | 0.18 (81.7) |
| OPT2119 | | Wenglor mounting bracket, right-angle swivel, 360 degree vertical and horizontal adjustment, 304 stainless steel, 12mm rod mount. For use with 30mm sensors. | 304 Stainless Steel | 304 Stainless steel | PDF | 0.18 (81.7) |

Note: 304 Stainless steel mounting rods sold separately: [OPT2109](#) (200mm [7.87 in] length), [OPT2110](#) (300mm [11.81 in] length), and [OPT2111](#) (500mm [19.69 in] length).



[OPT2118](#), [OPT2119](#)

Mounting Rods and Brackets

Mounting Rods

304 Stainless steel rods for mounting swivel brackets [OPT2112](#) - [OPT2127](#). Available in three lengths: 200mm, 300mm, and 500mm. 12mm diameter.

| Mounting Rods for OPT2112-2127 Swivel Mounting Brackets | | | | |
|---|-------|---|---------------------|------------------|
| Part Number | Price | Description | Drawing Link | Weight lb (g) |
| OPT2109 | | Wenglor mounting rod, 12mm diameter, 200mm length, 304 stainless steel. | PDF | 0.41 [185.97] |
| OPT2110 | | Wenglor mounting rod, 12mm diameter, 300mm length, 304 stainless steel. | PDF | 0.60 [272.16] |
| OPT2111 | | Wenglor mounting rod, 12mm diameter, 500mm length, 304 stainless steel. | PDF | 0.98 [444.52] |



Right-angle Mounting Bracket

Mounting bracket, right-angle, nickel-plated brass. For use with 12mm mounting rods [OPT2109](#), [OPT2110](#) & [OPT2111](#).

| Right-angle Mounting Brackets for 12mm Sensors | | | | |
|--|-------|---|---------------------|----------------|
| Part Number | Price | Description | Drawing Link | Weight lb [g] |
| OPT2108 | | Wenglor mounting bracket, right-angle, nickel plated brass. For use with 12mm mounting rods OPT2109 , OPT2110 & OPT2111 . | PDF | 0.07 [31.8] |

