



# Precision Ground Linear Shafts

## 1060 Steel and 440C Stainless Steel



### Features

- C1060 steel
- RC60-65 Hardness
- 10RMS Surface Finish
- Tolerance: Class L  
± 1/32" length tolerance  
+ 0.0000" / - 0.0005" diameter tolerance



### Features

- 440C Stainless steel
- RC50-55 Hardness
- 10RMS Surface Finish
- Tolerance: Class L  
± 1/32" length tolerance  
+ 0.0000" / - 0.0005" diameter tolerance



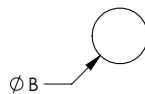
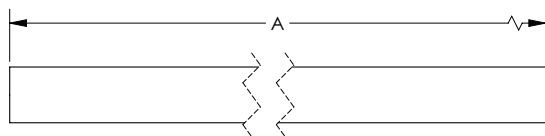
Linear Shafts - 1060 Steel				
Part Number	A	ØB	Price	Weight (lb)
<a href="#">LPCS08-12</a>	12.0	0.50		0.71
<a href="#">LPCS08-24</a>	24.0	0.50		2.41
<a href="#">LPCS08-36</a>	36.0	0.50		3.41
<a href="#">LPCS12-12</a>	12.0	0.75		1.52
<a href="#">LPCS12-24</a>	24.0	0.75		4.03
<a href="#">LPCS12-36</a>	36.0	0.75		5.84
<a href="#">LPCS16-12</a>	12.0	1.0		2.71
<a href="#">LPCS16-24</a>	24.0	1.0		6.41
<a href="#">LPCS16-36</a>	36.0	1.0		9.41

Note: All measurements in inches

Linear Shafts - 440C Stainless Steel				
Part Number	A	ØB	Price	Weight (lb)
<a href="#">LPSS08-12</a>	12.0	0.50		0.71
<a href="#">LPSS08-24</a>	24.0	0.50		2.41
<a href="#">LPSS08-36</a>	36.0	0.50		3.41
<a href="#">LPSS12-12</a>	12.0	0.75		1.52
<a href="#">LPSS12-24</a>	24.0	0.75		4.03
<a href="#">LPSS12-36</a>	36.0	0.75		5.84
<a href="#">LPSS16-12</a>	12.0	1.0		2.71
<a href="#">LPSS16-24</a>	24.0	1.0		6.41
<a href="#">LPSS16-36</a>	36.0	1.0		9.41

Note: All measurements in inches

### Dimensions



See our website [www.AutomationDirect.com](http://www.AutomationDirect.com) for complete Engineering drawings.