

Polycarbonate Pushbutton NEMA 1, 3R, 4X, 6P, and 12



Applications

Hubbell-Wiegmann offers an all-polycarbonate product with blank covers or a choice of one- or two-hole pushbutton openings for both 22mm and 30mm hardware. These enclosures include the external flush wall design, unobstructed internal sidewalls, polycarbonate cover screws, and watertight seal.



Construction

- High impact-resistant polycarbonate, gray in color with gloss finish.
- Poured-in-place seamless gasket for water-tight and dust-tight seal.
- Mounting wells located under the cover/ outside the gasket area.
- Removable cover with polycarbonate screws (provided). Torque cover screws to 16 lb-in (1.8 N-m).
- Rounded edges help to prevent collection of dust and debris.
- Available with 22mm or 30mm pushbutton holes, or blank cover.

Listings

- ULcUL 508, Types 1, 3R, 4X, 6P, 12 [UL File E64791]
- CSA Certified, Types 1, 3R, 4X, 6P, 12 [CSA File 222873]
- IEC 60529, IP66, IP67, IP68
- Temperature Range: -20 to 240 °F [-29 to 116 °C]
- Flammability Rating: UL94-5VA
- Outdoor UV Exposure Rating: UL-F1



Polycarbonate Pushbutton NEMA 1, 3R, 4X, 6P, and 12				
Part Number	Price	# Holes	Pushbutton Size	Enclosure Size H x W x D
HW-PN4X432	\$31.50	0	N/A	4.34 x 3.16 x 2.79 [110 x 80 x 71]
HW-PN4X533	\$33.00	0	N/A	5.12 x 3.16 x 3.54 [130 x 80 x 90]
HW-PN4X1PB	\$34.50	1	30mm	4.34 x 3.16 x 2.79 [110 x 80 x 71]
HW-PN4X2PB	\$38.00	2	30mm	5.12 x 3.16 x 3.54 [130 x 80 x 90]
HW-PN4X1PB-22	\$34.50	1	22mm	4.34 x 3.16 x 2.79 [110 x 80 x 71]
HW-PN4X2PB-22	\$38.00	2	22mm	5.12 x 3.16 x 3.54 [130 x 80 x 90]

Notes: Dimensions in inches [millimeters]

Enclosure Shipping Schedule				
Same day	1 - 7 days	1 - 10 days	1 - 15 days	1 - 20 days

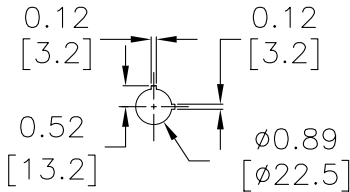
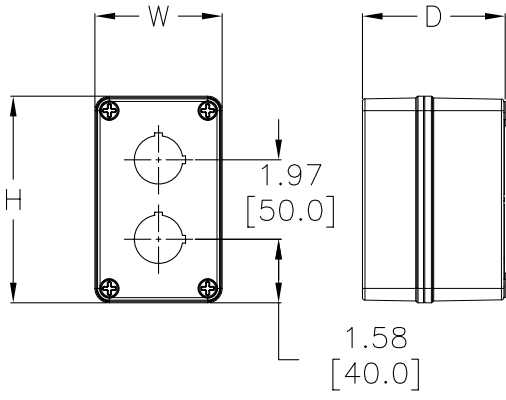
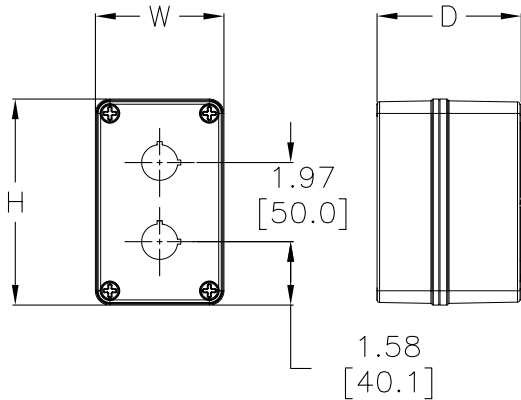
Color indicates shipping lead time in business days.

Polycarbonate Pushbutton NEMA 1, 3R, 4X, 6P, and 12

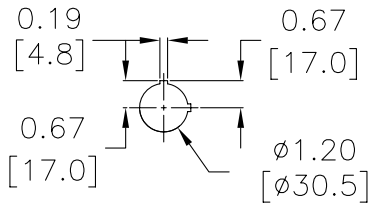


Dimensions

in [mm]

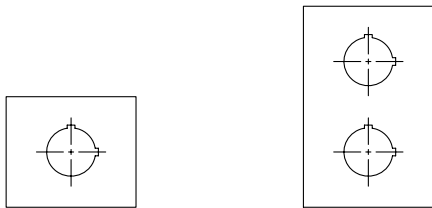


1PB-22/2PB-22
HOLE DETAIL



1PB/2PB
HOLE DETAIL

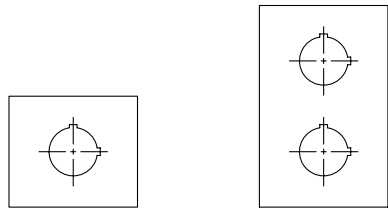
PB HOLE ARRANGEMENTS



SINGLE PB-22

DOUBLE PB-22

PB HOLE ARRANGEMENTS



SINGLE PB

DOUBLE PB

See our website: www.AutomationDirect.com for complete engineering drawings.