



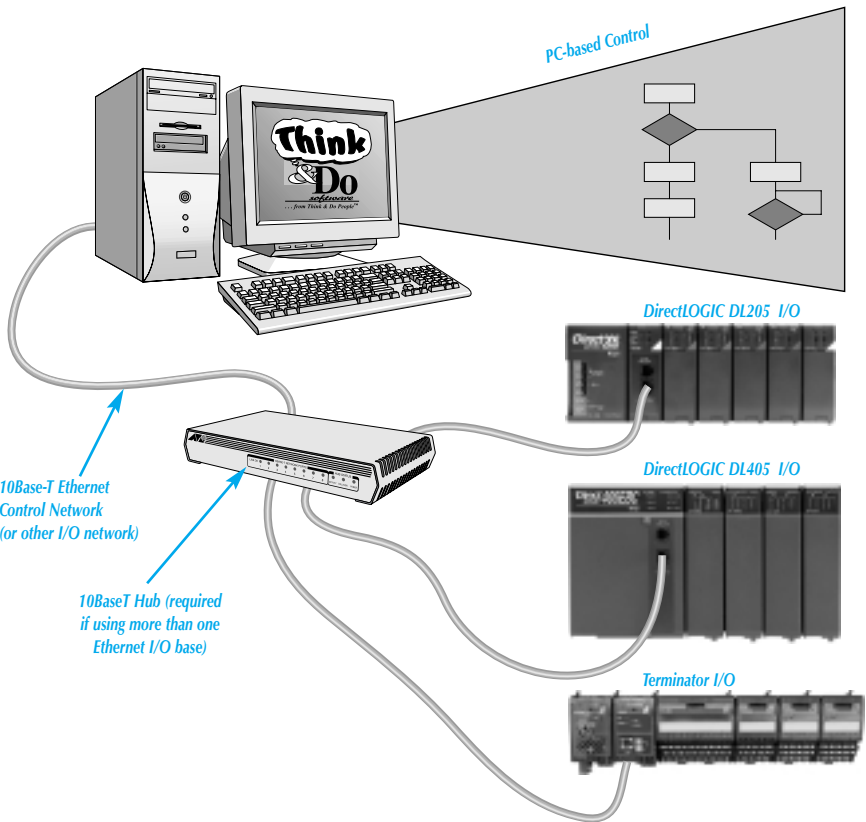
Powered By
Microsoft
Visio 2000

PC-TND-SD

Think & Do Software is an easy-to-learn, intuitive way to develop and run control applications on standard PCs, or the industrial PCs and WinPLCs featured in this section. Our variety of Ethernet Base Controllers gives PC-based control access to DL205, DL405, and Terminator I/O. The combination of Think & Do with this low-cost I/O allows you to build the most cost-effective, full-featured PC-based control solutions ever!

Think & Do Studio integrates flowchart control logic, HMI, motion control, PID loops, I/O device interfaces and project documentation tools in a standard development environment built on Microsoft Visio technology. Think & Do Studio benefits include:

- Shorter time to market through faster development and integration cycles,
- Tightly integrated control and information systems
- Easy access to real time data for visibility into the manufacturing process,
- Access to productivity data for asset utilization management,
- Flexible solutions with open architecture interfaces,
- Highly maintainable systems with self-documenting logic,
- Near-zero learning curve with the industry standard Microsoft Visio user interface,
- Better communication among designers in IT, Controls and Facilities groups,



Scalable solutions for Windows 2000, NT, embedded NT, and Windows CE!

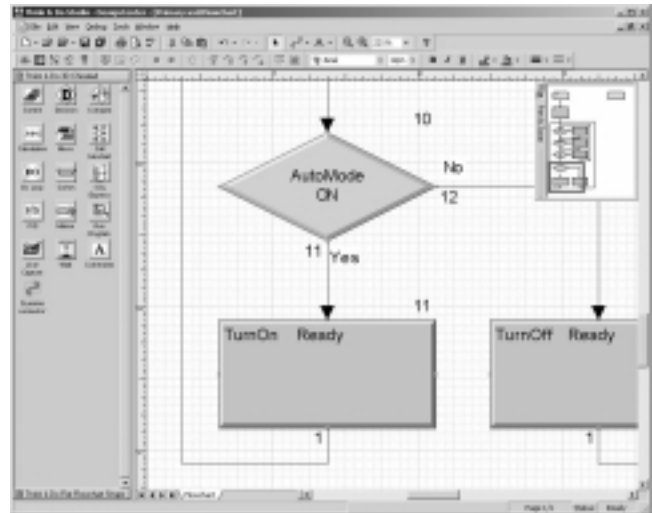
Think & Do Software programs can target Windows® NT, Embedded NT, Windows 2000®, and Windows® CE, giving you the option to select the platform that best suits your application. Think & Do takes advantage of NT and Windows 2000 on the DL470 or any standard PC. Think & Do also takes advantage of Windows CE in the WinPLC products. Windows CE provides a bulletproof, diskless, run-time environment for these embedded controllers. With either operating system, Think & Do Studio is fully Microsoft-compliant, combining powerful control capabilities with all the standard Windows advantages.

System requirements

- Windows NT or 2000-Certified PC for project development
- Pentium III® 550 MHz or faster
- Windows NT 4.0 or Windows 2000
- CD-ROM drive
- 128MB RAM
- 300 MB available hard-disk space

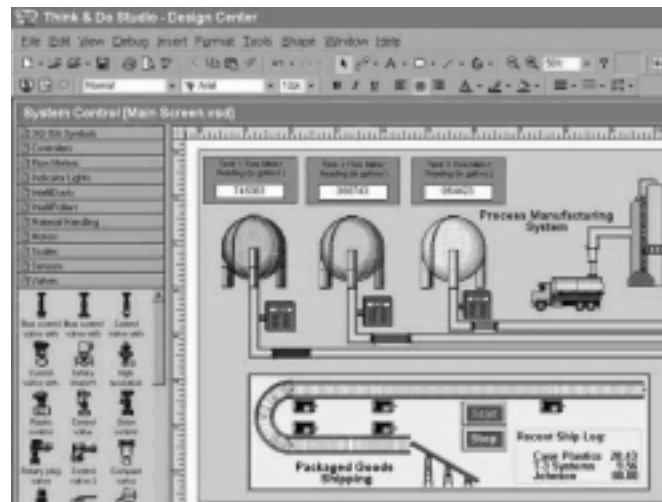
Flowchart Logic

We often describe how a complex machine or process works by using a simple flowchart on the nearest white board. So, why not use flowcharts to design a control program directly? Once you *think* that flowchart, just tell the machine to *do* it. Control logic flowcharts (and HMI screens) are created in the familiar Microsoft Visio drawing environment. A Think & Do logic stencil provides comprehensive control functionality, including discrete logic, motion control, PID loop control, serial port communications, SQL database interface and external program interfaces. Logic drawn in Studio flowcharts is automatically converted to an executable form that can be run on Windows 2000, Windows NT (including NT Embedded), and Windows CE.



HMI

HMI screens (and control logic flowcharts) are created in the familiar Microsoft Visio drawing environment. Studio includes all of the Microsoft Visio 2000 Standard Edition shapes, plus 3200+ automation specific shapes for a wide range of applications. All screen objects can be configured to change properties (such as color, size, screen location, and rotational position) based on the value of realtime data. Think & Do Studio allows the inclusion of external drawings as well as Active-X controls in HMI screens. Studio also provides VBA scripting for HMI screens, with direct access to real-time data in the control application.



ProjectCenter

Think & Do Studio ProjectCenter combines elements of the familiar Microsoft Outlook and Microsoft Visual Studio user interfaces to organize automation project components, tools and documentation. ProjectCenter also houses the common tagname database that supports the control logic, HMI, external programs and enterprise connectivity. Studio has the capability to store any file as part of the project. These files are associated with the project and can be automatically included in project backup and recover operations.

For more information on Think & Do, please visit their website at:

<http://www.thinkndo.com>

