



Think & Do Studio!

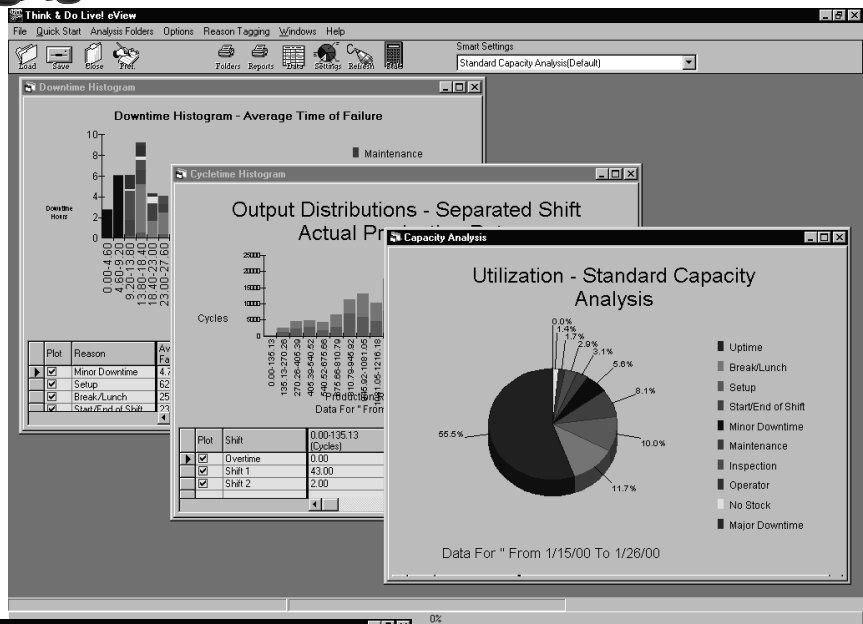


Increase productivity using built-in data analysis tools

Think & Do Studio has a comprehensive production analysis tool called eView. It presents detailed, graphical views of production data from three perspectives: Cycletime, Downtime, and Capacity. It even allows you to divide reasons into sub-reasons for more detailed analysis.

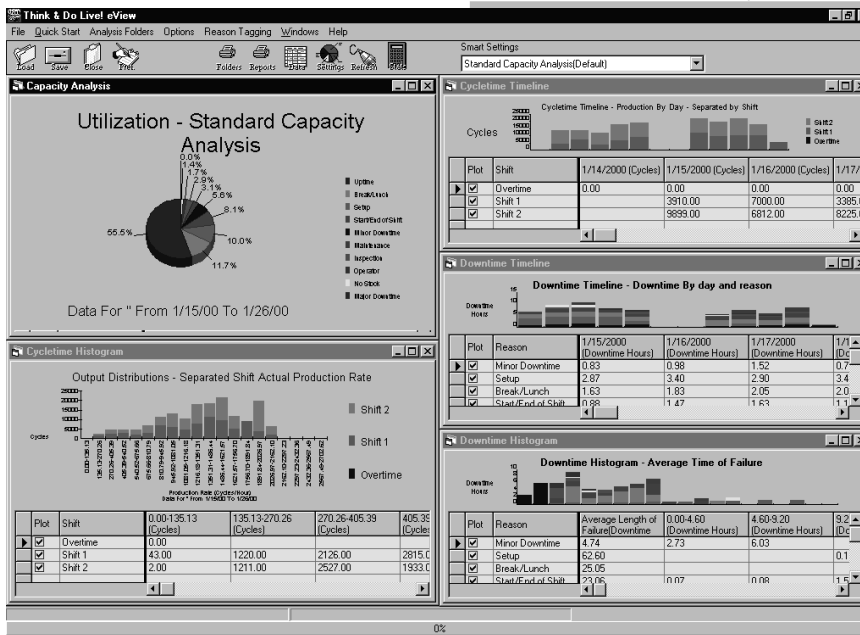
Cycletime analysis

Cycletime Analysis examines

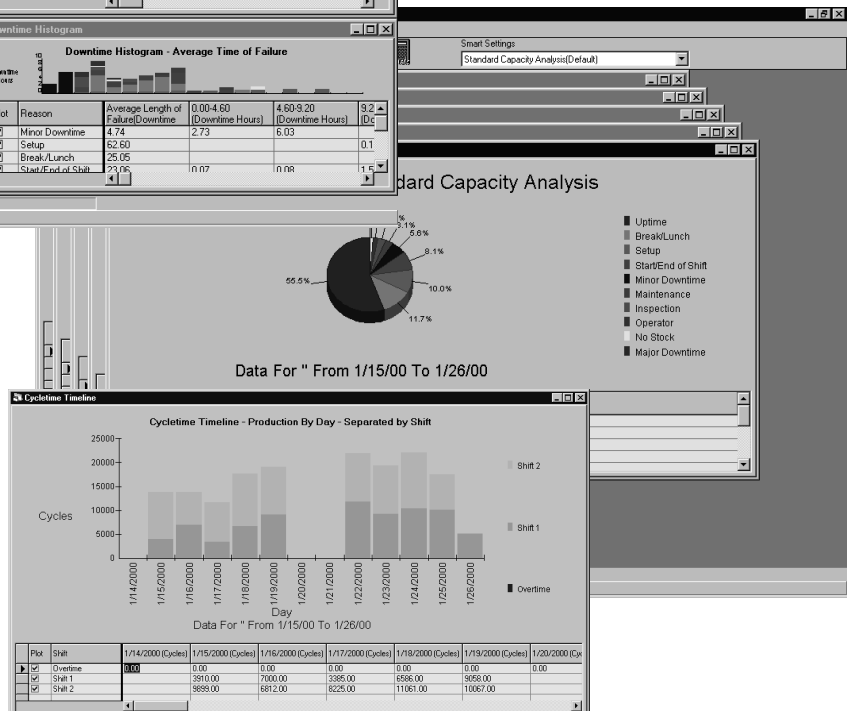


Five analysis folders

- Cycletime Timeline
- Cycletime Histogram
- Downtime Timeline
- Downtime Histogram
- Capacity Analysis



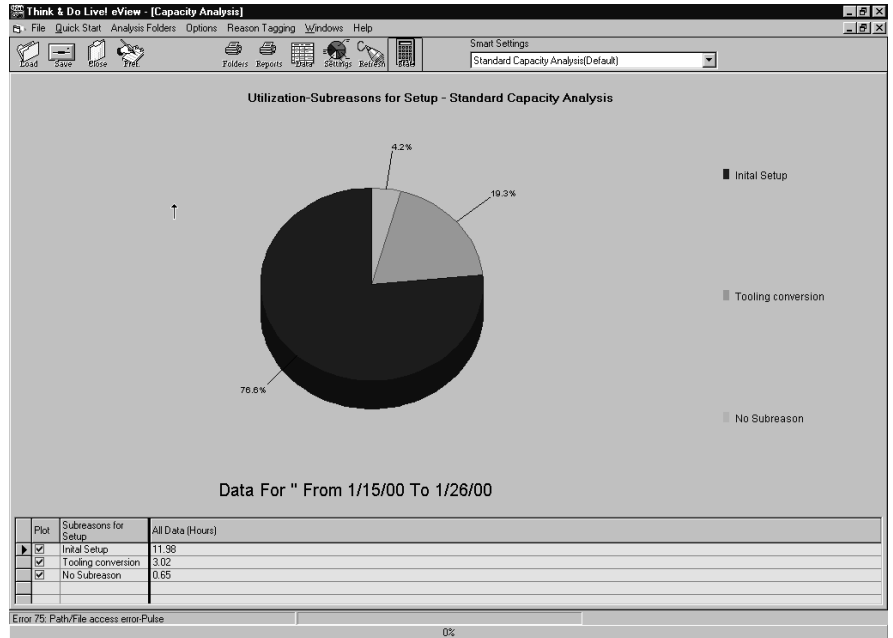
trends and measures of production rates. The Cycletime Timeline displays cycles per hour, shift, or day. The Cycletime Histogram shows total cycles versus production rates.



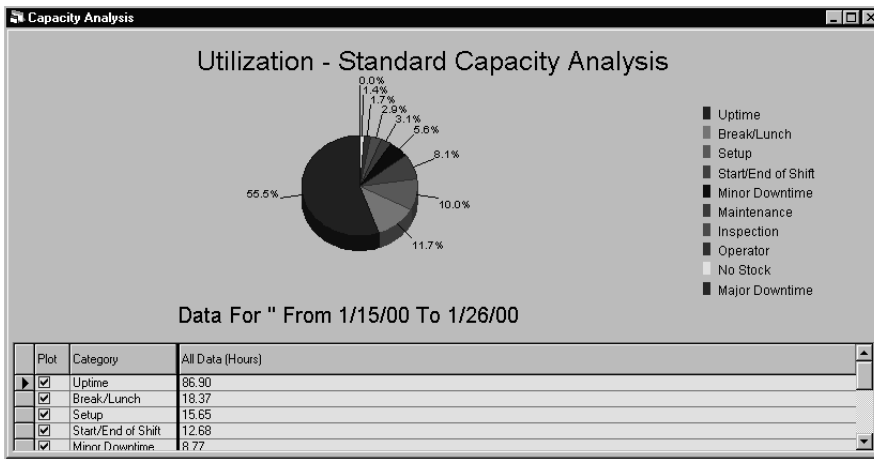
Downtime analysis

The Downtime Timeline gives an hourly trend Analysis of Downtime, with color-coded reasons for the downtime. The Downtime Histogram shows individual downtimes per length of failure time. Now you can find out what's causing downtime and why.

You decide what is major downtime and what is minor downtime. You also choose the possible reasons for downtime (part jam, low input hopper, etc.).



Reasons and Sub-reasons
Just click on a reason to display a breakdown of sub-reasons.



Capacity analysis

Capacity Analysis compares the actual production total to the system's theoretical maximum capacity.

