

# **PATLITE**® Industrial LED Lighting



### **Aluminum LED Light Bars (CWK, CLK series)**

These rust-free aluminum body light bars are designed to be bracket mounted. LED module lenses are clear and provide bright daylight white light. The super slim design is ideal for tight spaces. Up to IP69K options available.



### **Polycarbonate LED Light Bars (CLA, CWF series)**

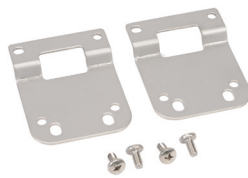
These lightweight polycarbonate LED light bars are designed to be bracket mounted. LED module lenses are clear and provide bright daylight white light. The super slim and lightweight design is ideal for tight spaces. Up to IP69K options available.



### **LED Signal Tower (HSST series)**

An all-in-one package for controlling LR5 signal lights. Available red, amber, and green lights with clear lenses. Designed for indoor, upright installation. IP54 rated.

## Accessories



# PATLITE® CLA Series LED Light Bars

## Features

- Bright, long-lasting LEDs
- Daylight color, up to 650lx illuminance
- Meets IP66/67/69K standards
- Works in temperatures from -40 to +60°C [-40 to +140°F]
- Suitable for food, beverage, and pharmaceutical applications
- Constructed of shock-resistant polycarbonate resin



**CLA6S-24-CD-30**

CLA Series Light Bars							
Part Number	Price	Drawing Link	Description	Light Color	Body Material	Light Length (mm [in])	Cable Length m [ft]
<b><u>CLA6S-24-CD-30</u></b>		<a href="#">PDF</a>	LED light bar, bracket mount, pigtail connector. Mounting bracket included.	Daylight white	Polycarbonate	600 [23.6]	3 [9.8]

CLA Series Accessories			
Part Number	Price	Drawing Link	Description
<b><u>SZ-310AR</u></b>		<a href="#">PDF</a>	Replacement rear bracket (polycarbonate) for CLA series light bars
<b><u>SZ-310ARM</u></b>		<a href="#">PDF</a>	Magnetic rear bracket (polycarbonate) for CLA series light bars
<b><u>SZ-310ASB</u></b>		<a href="#">PDF</a>	Side bracket for CLA series light bars



**SZ-310AR**

**SZ-310ARM**



**SZ-310ASB**

# PATLITE® CLA Series LED Light Bars

## Specifications

CLA Series Light Bars Technical Specifications		
<b>Model</b>	<b><i>CLA6S-24-CD-30</i></b>	
<b>Luminous Color</b>	Daylight white	
<b>Color Temperature</b>	6800K	
<b>Illuminance (@24VDC)</b>	<b>0.5 m</b>	650lx
	<b>1.0 m</b>	200lx
<b>Luminous Flux</b>	690lm	
<b>Rated Voltage</b>	24VDC (polarized)	
<b>Operating Voltage Range</b>	24VDC ± 10%	
<b>Rated Current Consumption</b>	480mA ± 10%	
<b>Rated Power Consumption</b>	11.6 W	
<b>Operating Ambient Temperature</b>	-40 to +60°C [-40 to +140°F]	
<b>Operating Ambient Humidity</b>	Less than 90% (no condensation)	
<b>Mounting Location</b>	Indoors	
<b>Mounting Direction</b>	All directions	
<b>Protection Rating</b>	IP66/67 (IEC 60529) / 69K (DIN 40050 part 9) (except cable terminal)	
<b>Insulation Resistance</b>	More than 5MΩ at 500VDC between the terminals and the chassis	
<b>Withstanding Voltage</b>	500VAC applied for 1 minute between terminals and chassis without breaking insulation	
<b>Vibration Resistance</b>	19.6 m/s <sup>2</sup> (30Hz, back and forth: 2h, right to left: 2h, up and down: 2h)	
<b>Weight</b>	340g [12.0 oz] ± 10%	
<b>Agency Approvals *</b>	UL 2108, CSA-C22.2 No. 250.0 EMC Directive (EN 55011, EN 61000-6-2) RoHS Directive (EN 50581) Conforms to CE requirements UL Listed (E306141)	

\* To obtain the most current agency approval information, see the Agency Approval Checklist section on the specific part number's web page.

# PATLITE® CWK Series LED Light Bars

## Features

- Unique lens design ensures optimal light distribution
- Daylight color, up to 1500lx illuminance
- Compact design with high resistance to debris and fluids
- Meets IP66/67 standards
- Designed to operate in temperatures from -10 to +50°C [+14 to +122°F]
- Three lengths available – 200, 300, and 600mm [7.9, 11.8, and 23.6 inches]
- Constructed of tempered glass and aluminum



**CWK2S-24-CD**

CWK Series Light Bars							
Part Number	Price	Drawing Link	Description	Light Color	Body Material	Light Length (mm [in])	Cable Length m [ft]
<a href="#">CWK2S-24-CD</a>		<a href="#">PDF</a>	LED light bar, bracket mount, pigtail connector. Mounting bracket included.	Daylight white	Aluminum	200 [7.9]	3 [9.8]
<a href="#">CWK3S-24-CD</a>		<a href="#">PDF</a>				300 [11.8]	
<a href="#">CWK6S-24-CD</a>		<a href="#">PDF</a>				600 [23.6]	

## Specifications

CWK Series Light Bars Technical Specifications				
Part Number		<a href="#">CWK2S-24-CD</a>	<a href="#">CWK3S-24-CD</a>	<a href="#">CWK6S-24-CD</a>
<b>Luminous Color</b>		Daylight white		
<b>Color Temperature</b>		6500K		
<b>Illuminance (@24VDC)</b>	<b>1.0 m</b>	600lx	850lx	1500lx
<b>Luminous Flux</b>		800lm	1200lm	2400lm
<b>Rated Voltage</b>		24VDC (polarized)		
<b>Operating Voltage Range</b>		24VDC ± 10%		
<b>Rated Current Consumption</b>		360mA ± 10%	480mA ± 10%	960mA ± 10%
<b>Rated Power Consumption</b>		8.64 W	11.52 W	23.04 W
<b>Operating Ambient Temperature</b>		-10°C to +50°C [+14°F to +122°F]		
<b>Operating Ambient Humidity</b>		Less than 90% (no condensation)		
<b>Mounting Location</b>		Indoors		
<b>Mounting Direction</b>		All directions		
<b>Protection Rating</b>		IP66/67 (JIS C0920)		
<b>Insulation Resistance</b>		More than 5MΩ at 500VDC		
<b>Withstanding Voltage</b>		500VAC applied for 1 minute between terminals and chassis		
<b>Vibration Resistance</b>		20.0 m/s <sup>2</sup> (30Hz)		
<b>Weight</b>		600g [21.2 oz]	750g [26.5 oz]	1230g [43.4 oz]
<b>Agency Approvals *</b>		Conforms to CE requirements: EN 55015, EN61000-6-2 RoHS Directive (2011/65/EU) UL Listed (E306141)		

\* To obtain the most current agency approval information, see the Agency Approval Checklist section on the specific part number's web page.

# PATLITE® CLK Series LED Light Bars

## Features

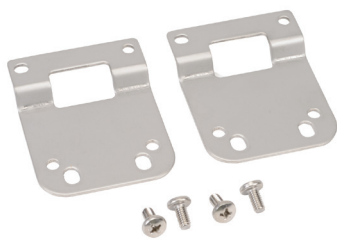
- Unique lens design ensures optimal light distribution
- Daylight color, up to 2100lx illuminance
- Meets IP66/67/69K standards
- Designed to operate in temperatures from -40 to +60°C [-40 to +140°F]
- Three lengths available – 200, 300, and 600mm [7.9, 11.8, and 23.6 inches]
- Can be daisy-chained using M12 connectors
- Constructed of tempered glass and aluminum



**CLK3CL-24AG-CD**

CLK Series Light Bars							
Part Number	Price	Drawing Link	Description	Light Color	Body Material	Length (mm [in])	Cable Length
<a href="#">CLK3C-24AG-CD</a>		<a href="#">PDF</a>	LED light bar, bracket mount, 4-pin M12 quick-disconnect connector. Mounting bracket included.	Daylight white	Aluminum	300 [11.8]	N/A
<a href="#">CLK6C-24AG-CD</a>		<a href="#">PDF</a>				600 [23.6]	
<a href="#">CLK3CL-24AG-CD</a>		<a href="#">PDF</a>	LED light bar, bracket mount. 4-pin M12 female and 4-pin M12 male connectors. Mounting bracket included.	Daylight white	Aluminum	300 [11.8]	
<a href="#">CLK6CL-24AG-CD</a>		<a href="#">PDF</a>				600 [23.6]	

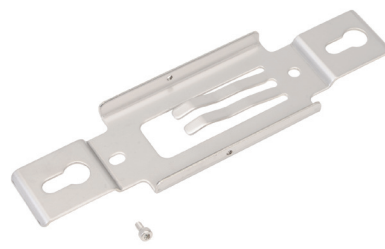
CLK Series Accessories			
Part Number	Price	Drawing Link	Description
<a href="#">CLK-001</a>		<a href="#">PDF</a>	Replacement rear bracket (aluminum) for CLK series light bars.
<a href="#">SZ-320KS</a>		<a href="#">PDF</a>	Adjustable angle wall bracket (aluminum) for CLK series light bars.
<a href="#">L85130002-F1</a>		N/A	Sliding bracket for CLK series light bars.



**CLK-001**



**SZ-320KS**



**L85130002-F1**

# PATLITE® CLK Series LED Light Bars

## Specifications

CLK Series Light Bars Technical Specifications					
Part Number		CLK3C-24AG-CD	CLK6C-24AG-CD	CLK3CL-24AG-CD	CLK6CL-24AG-CD
Luminous Color		Daylight white			
Color Temperature		6500K			
Illuminance (@24VDC)	1.0 m	1200lx	2100lx	1200lx	2100lx
	2.0 m	300lx	580lx	300lx	580lx
Luminous Flux		1300lm	2600lm	1300lm	2600lm
Rated Voltage		24VDC (polarized)			
Operating Voltage Range		24VDC ± 10%			
Rated Current Consumption		522mA ± 10%	1044mA ± 10%	522mA ± 10%	1044mA ± 10%
Rated Power Consumption		12.5 W	25W	12.5 W	25W
Operating Ambient Temperature		-40 to +60°C [-40 to +140°F]			
Operating Ambient Humidity		Less than 90% (no condensation)			
Mounting Location		Indoors			
Mounting Direction		All directions			
Protection Rating		IP66/67 (JIS C0920) / 69K (DIN 40050 part 9)			
Insulation Resistance		More than 5MΩ at 500VDC between terminals and chassis			
Withstanding Voltage		500VAC applied for 1 minute between terminals and chassis			
Vibration Resistance		19.6 m/s <sup>2</sup> (JIS C 0911-1984)			
Weight (g [oz])		600 [21.2]	1070 [37.7]	600 [21.2]	1070 [37.7]
Agency Approvals *		UL 2108, CSA-C22.2 No. 250.0 EMC Directive (EN 55015, EN 61000-6-2) RoHS Directive (EN 50581) Conforms to CE requirements UL Recognized (E306141)			

\* To obtain the most current agency approval information, see the Agency Approval Checklist section on the specific part number's web page.

# PATLITE® CWF Series LED Light Bars

## Features

- Both AC and DC versions available
- Daylight color, up to 445lx illuminance
- Includes on/off switch for light control
- Meets IP20 standards
- AC versions designed to operate in temperatures from -20 to +50°C [-4 to +122°F]
- DC versions designed to operate in temperatures from -25 to +60°C [-13 to +140°F]
- Three lengths available – 300, 600, and 900mm [11.8, 23.6, and 35.4 inches]
- Constructed of polycarbonate and aluminum



**CWF3S-M2U-CD**

CWF Series Light Bars							
Part Number	Price	Drawing Link	Description	Light Color	Body Material	Length (mm [in])	Cable Length m [ft]
<a href="#">CWF3S-M2U-CD</a>		<a href="#">PDF</a>	LED light bar with on/off switch, bracket mount, pigtail connector, AC input. Mounting bracket included.	Daylight white	Polycarbonate/ Aluminum	300 [11.8]	3 [9.8]
<a href="#">CWF6S-M2U-CD</a>		<a href="#">PDF</a>				600 [23.6]	
<a href="#">CWF9S-M2U-CD</a>		<a href="#">PDF</a>				900 [35.4]	
<a href="#">CWF3S-24-CD</a>		<a href="#">PDF</a>	LED light bar with on/off switch, bracket mount, pigtail connector, DC input. Mounting bracket included.			300 [11.8]	
<a href="#">CWF6S-24-CD</a>		<a href="#">PDF</a>				600 [23.6]	

CWF Series Accessories			
Part Number	Price	Drawing Link	Description
<a href="#">CWF-001</a>		<a href="#">PDF</a>	Swivel bracket (aluminum) for CWF series light bars
<a href="#">CWF-002</a>		<a href="#">PDF</a>	Magnet for CWF series light bars
<a href="#">ZM0000028-F1</a>		N/A	Replacement rear bracket (nickel plated steel) for CWF series light bars



**CWF-001**



**CWF-002**



**ZM0000028-F1**

# PATLITE® CWF Series LED Light Bars

## Specifications

CWF Series Light Bars Technical Specifications						
Model	CWF3S-M2U-CD	CWF6S-M2U-CD	CWF9S-M2U-CD	CWF3S-24-CD	CWF6S-24-CD	
Luminous Color	Daylight white					
Color Temperature	5700K					
Illuminance (@24VDC)	1.0 m	150lx	320lx	445lx	165lx	320lx
Luminous Flux	500lm	1000lm	1500lm	500lm	1000lm	
Rated Voltage	100-240VAC (50/60Hz)			24VDC (polarized)		
Operating Voltage Range	100-240VAC ± 10%			24VDC ± 10%		
Rated Current Consumption	0.06 A	0.13 A	0.17 A	-	-	
Rated Power Consumption	5W	10W	15W	5W	10W	
Operating Ambient Temperature	-20°C to +50°C [-4°F to +122°F]			-25°C to +60°C [-13°F to +140°F]		
Operating Ambient Humidity	Less than 90% (no condensation)					
Mounting Location	Indoors					
Mounting Direction	All directions					
Protection Rating	IP20					
Insulation Resistance	More than 5MΩ at 500VDC between live part and non-current carrying metallic part					
Withstanding Voltage	1500VAC applied for 1 minute between live part and non-current carrying metallic part			500VAC applied for 1 minute between live part and non-current carrying metallic part		
Weight (g [oz])	530 [18.7]	680 [24.0]	840 [29.6]	420 [14.8]	570 [20.1]	
Agency Approvals *	UL 1598, CSA C22.2 No. 250.0 FCC Part 15 Subpart B Class A			UL 1598, CSA C22.2 No. 250.0 EMC Directive (EN 61000-6-4, EN 61000-6-2) FCC Part 15 Subpart B Class A		

\* To obtain the most current agency approval information, see the Agency Approval Checklist section on the specific part number's web page.



# PATLITE® HSST Series Signal Towers

## Features

- Low-cost kit for controlling LR5 signal tower manually
- Three-tier light with red, amber, and green light modules
- Includes 3-button switch box and power adapter
- Tower meets IP54 standards
- Designed to operate in temperatures from 0 to +40°C [+32 to +104°F]
- Tower is 219mm [8.6 in] long with 50mm [2.0 in] diameter lights



**LR5-E-RZ**



**HSST-3M2-RYG**

HSST Series Signal Towers								
Part Number	Price	Drawing Link	Description	Light Color	Lens Color	Body Color	Light Tower Length mm [in]	Diameter
<b><u>HSST-3M2-RYG</u></b>		<a href="#">PDF</a>	Manual signal tower station kit, 3 tiers, permanent LED light function.	Red, Amber, Green	Clear	Off-white	219 [8.6]	50mm

HSST Series Accessories		
Part Number	Price	Description
<b><u>LR5-E-RZ</u></b>		Patlite LED light element, 50mm diameter, red, permanent or flashing (60 fpm +/- 3 fpm) light function, 24 VDC, clear lens. For use with HSST series manual signal tower station kit.
<b><u>LR5-E-YZ</u></b>		Patlite LED light element, 50mm diameter, yellow, permanent or flashing (60 fpm +/- 3 fpm) light function, 24 VDC, clear lens. For use with HSST series manual signal tower station kit.
<b><u>LR5-E-GZ</u></b>		Patlite LED light element, 50mm diameter, green, permanent or flashing (60 fpm +/- 3 fpm) light function, 24 VDC, clear lens. For use with HSST series manual signal tower station kit.
<b><u>B32310071-7F1</u></b>		Patlite head cover, replacement. For use with HSST series manual signal tower station kit.
<b><u>T16000002-F1</u></b>		Patlite 3-button switch box, replacement. For use with HSST series manual signal tower station kit.
<b><u>T13300128-F1</u></b>		Patlite power supply, replacement. For use with HSST series manual signal tower station kit.



**B32310071-7F1**



**T16000002-F1**



**T13300128-F1**

# **PATLITE**® HSST Series Signal Towers

## Specifications

<b>HSST Series Signal Towers Technical Specifications</b>		
<b>Part Number</b>	<b>HSST-3M2-RYG</b>	
<b>Rated Voltage</b>	AC adapter input: 100-240VAC (50/60Hz) Output: 24VDC	
<b>Operating Voltage Range</b>	100-240VAC ± 10%	
<b>Rated Power Consumption (Max)</b>	4W	
<b>Operating Ambient Temperature</b>	0 to +40°C [+32 to +104°F]	
<b>Operating Ambient Humidity</b>	Less than 90% (no condensation)	
<b>Mounting Location</b>	Indoors	
<b>Mounting Direction</b>	Upright (recommended)	
<b>Protection Rating</b>	Switch Box: IP20 Signal Tower: IP54	
<b>Insulation Resistance</b>	More than 5MΩ at 500VDC between power input lead and chassis	
<b>Withstanding Voltage</b>	1500VAC applied for 1 minute between live part and non-current carrying metallic part	
<b>Weight (g [oz])</b>	<b>Signal Tower (Short Pole)</b>	360 [12.7]
	<b>Signal Tower (Long Pole)</b>	470 [16.6]
	<b>Bracket</b>	330 [11.6]
	<b>Switch Box</b>	70 [2.5]
	<b>AC Adapter</b>	140 [4.9]
	<b>Fitting Plate</b>	50 [1.8]
<b>Agency Approvals *</b>	RoHS Directive (EN 50581) FCC Part 15 Subpart B Class A UL 48, CSA C22.2 No. 207 UL Listed (File E310210)	

\* To obtain the most current agency approval information, see the Agency Approval Checklist section on the specific part number's web page.